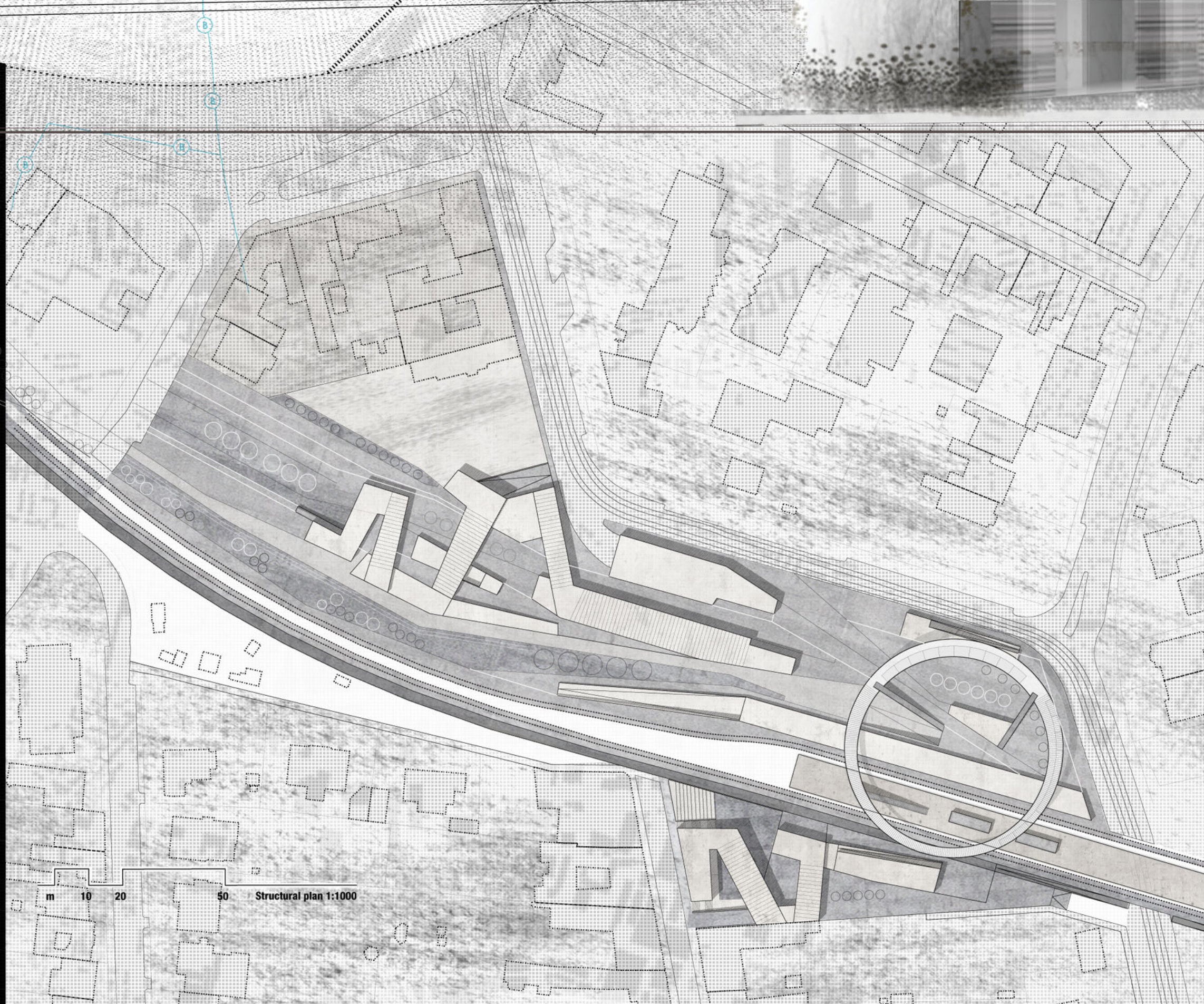
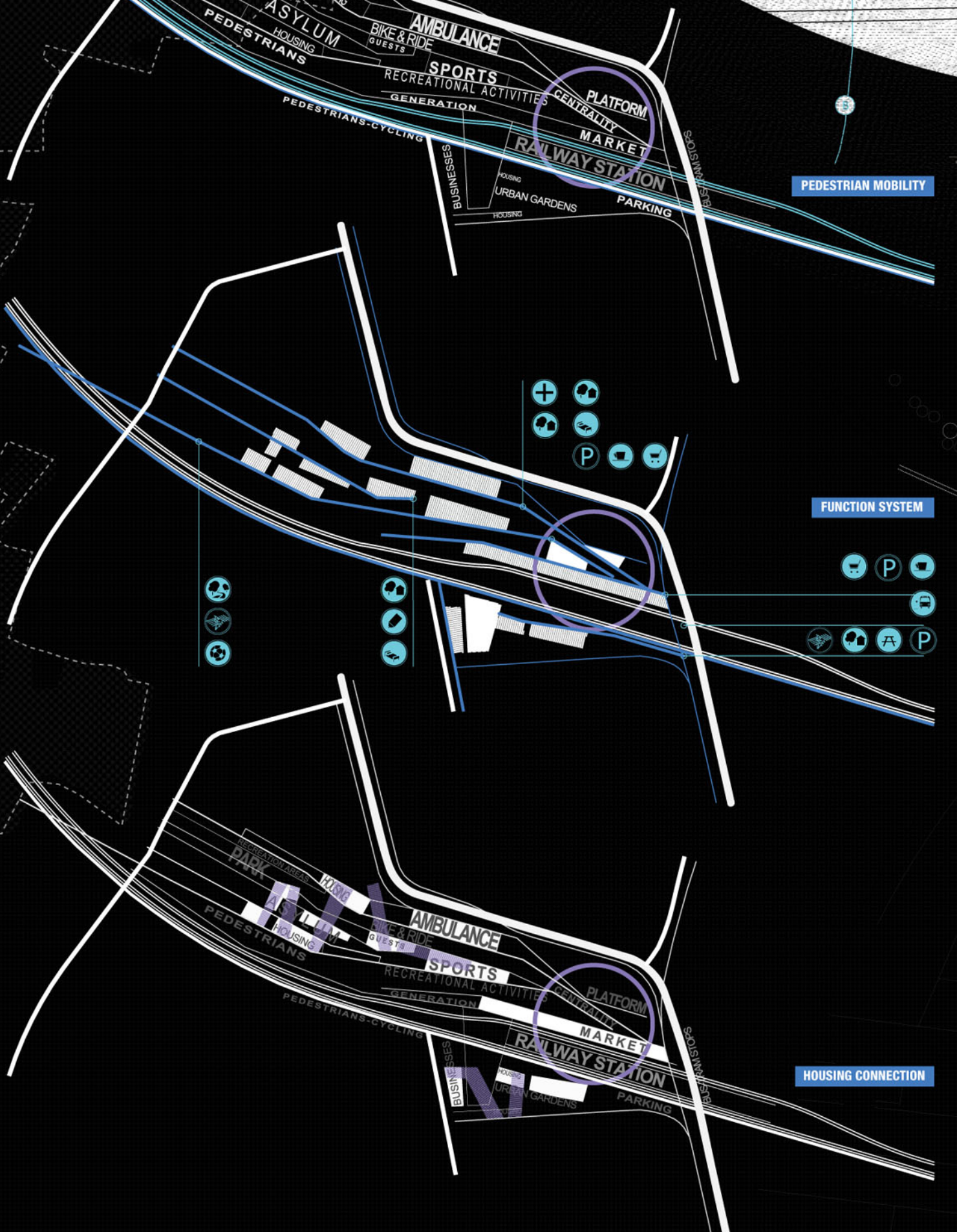
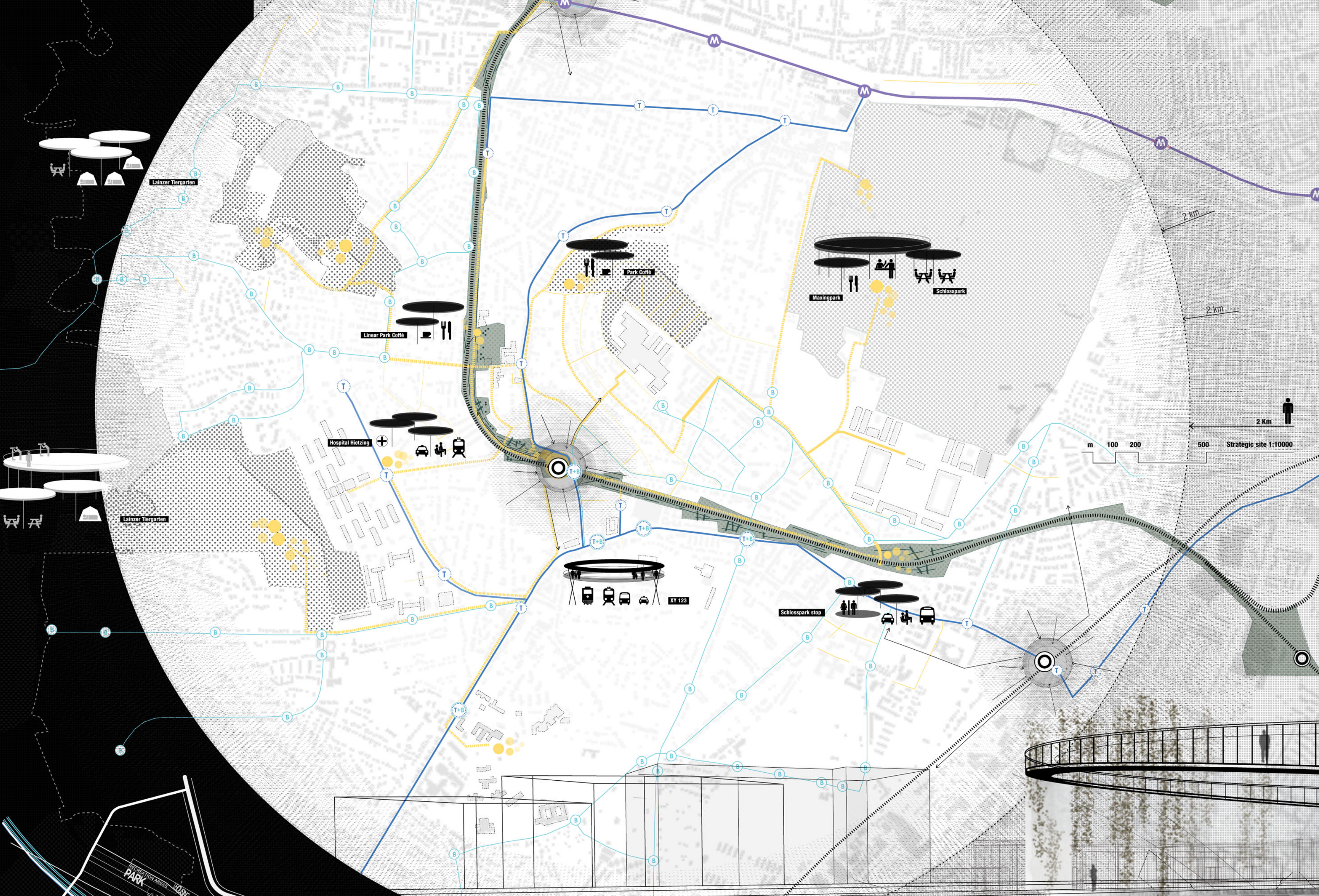
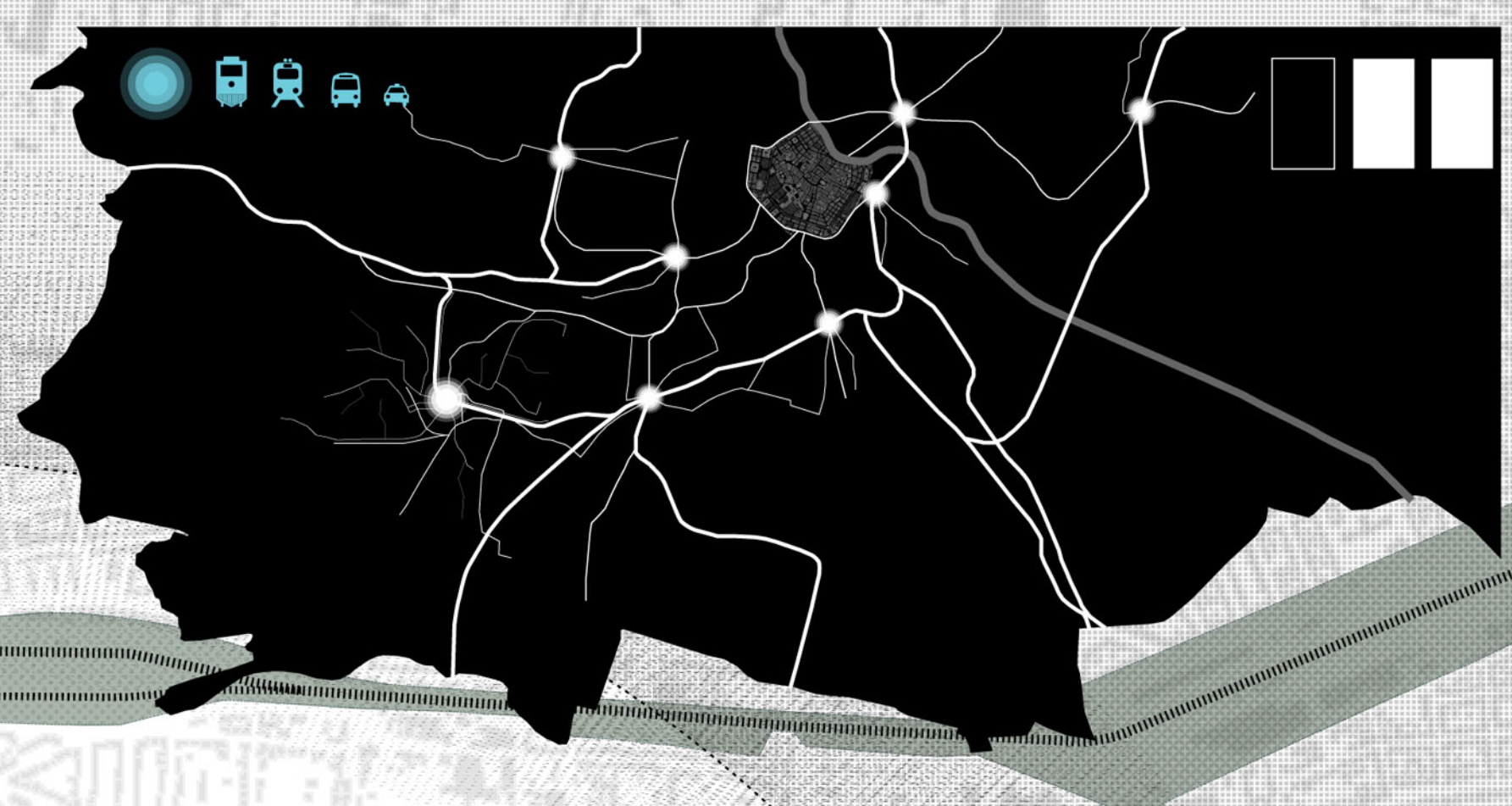


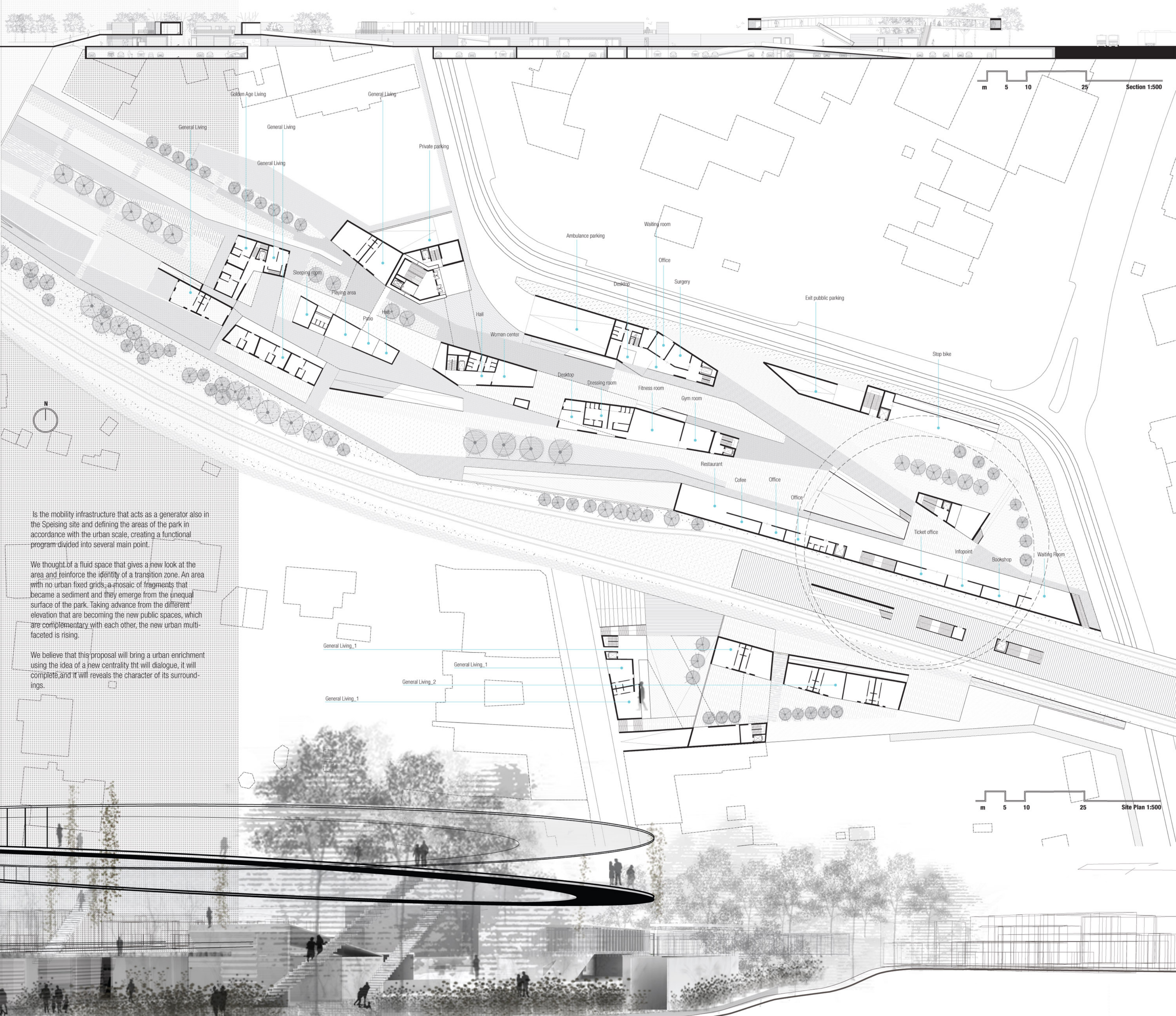
Looking at the challenge that aims Wien becoming a new European center of border and multilateral regions inside the four states, the project intends to re-emerge the mesh infrastructure that keeps the major points of tension in an area that, in accordance with its position, is voted to become the new hub of public transport.

This is an open project, undefined and not prefigured, not limited in his movements, able to work with the city as an operating system rather than as a finished object, as a strategy rather than a composition.

The project is between changes of scale, which aim to give a reading of the changing setting with continuous references to the urban and architectural scale searching for resonances outside the project area. The large circular surface symbolically surrounds a spatiality that introduces a discontinuity with the existing fabric, becoming due to this fact, a great urban landmark.



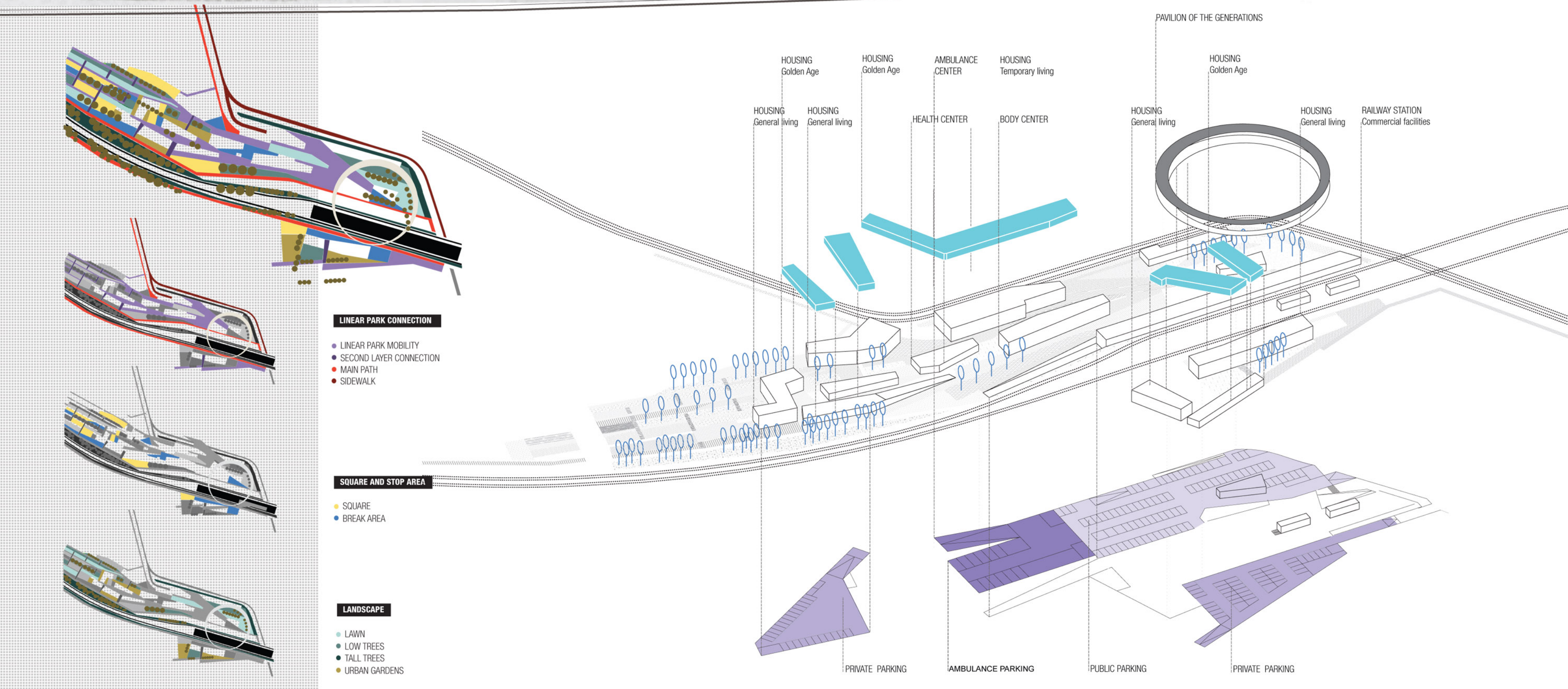




Is the mobility infrastructure that acts as a generator also in the Spersing site and defining the areas of the park in accordance with the urban scale, creating a functional program divided into several main point.

We thought of a fluid space that gives a new look at the area and reinforce the identity of a transition zone. An area with no urban fixed grids, a mosaic of fragments that became a sediment and they emerge from the unequal surface of the park. Taking advance from the different elevation that are becoming the new public spaces, which are complementary with each other, the new urban multifaceted is rising.

We believe that this proposal will bring a urban enrichment using the idea of a new centrality that will dialogue, it will complete, and it will reveals the character of its surroundings.





The possibility of moving, faster than before and almost with limitless connections between areas and the city it's become an important point inside the project.  
This fact has led to a radical change in the organization of human coexistence and social conditions in which we can recognize spatial functions.

The residential projects include the organization of the privacy space in connection with the idea of common interests.  
The project due to its flexibility, and his being open system, is one of continuous evolution and change in time, going to density in height or occupying the "terrain vague" defined by the railway line.  
It provides for an initial residential facility designed and developed on one level, which is divided into wheels and suspension systems cross, which will serve to meet the comfort level of lighting and orientation.  
It will be open for future densification and it will be prepare to take part in new idea of typology.

### GENERAL LIVING

**Vertical Extension model**  
area < 95 mq

- triple service volume
- residential space
- private free space
- parking

**Extension Model**  
area < 70 mq

- double service volume
- residential space
- private free space
- parking

**Basic Model**  
area < 55 mq

- singular service volume
- residential space
- parking
- private free space

### GOLDEN AGE LIVING

**Double Residential space**  
area < 70 mq

- private courtyard space
- public space
- public function
- double residential

**Individual Residential space**  
area < 50 mq

- private courtyard space
- singular residential

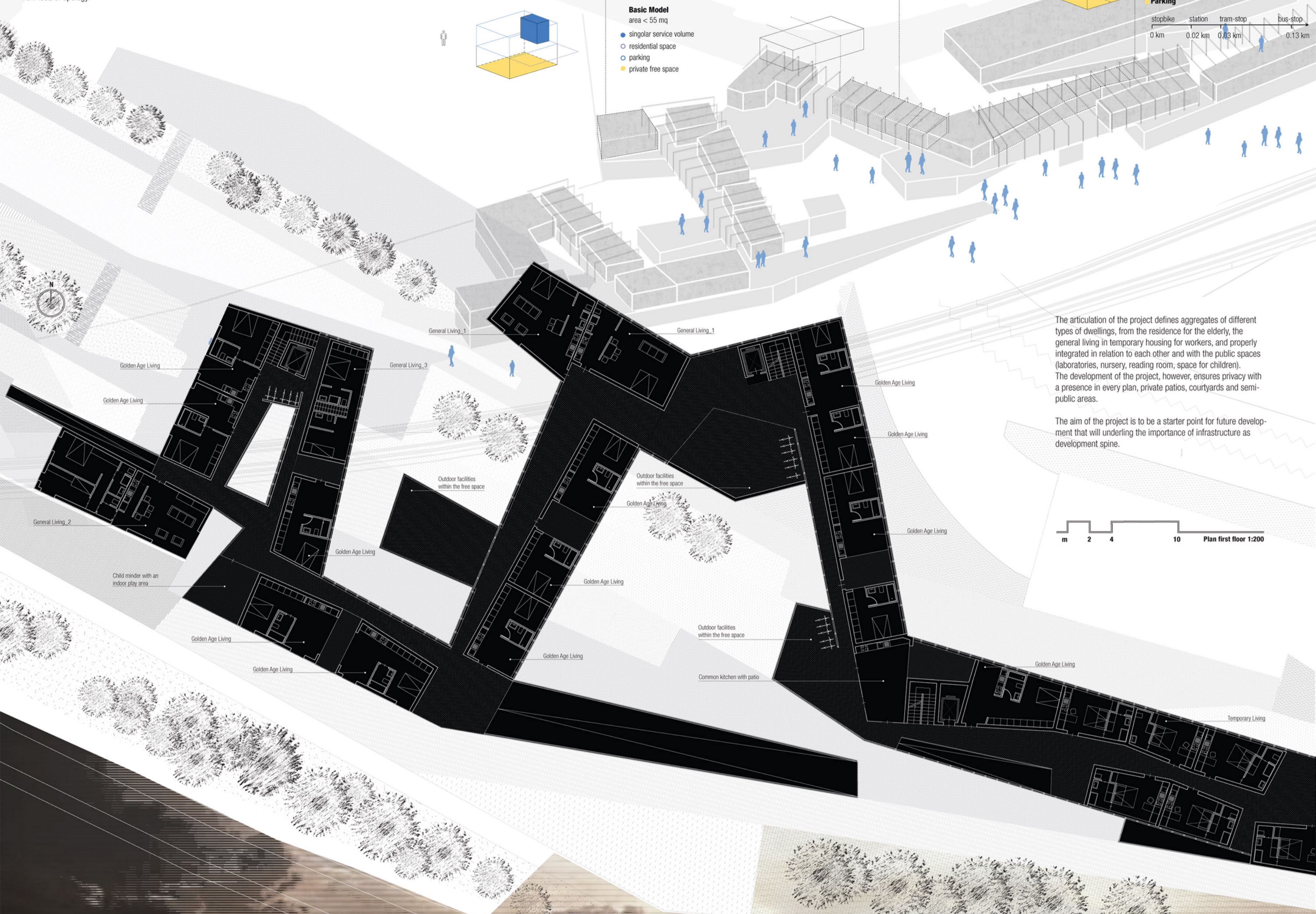
### TEMPORARY LIVING

**Residential Function**  
area < 35 mq

- Public Function
- temporary market  
body center  
bicycle workshop  
bakery

**Parking**

stopbike station tram-stop bus-stop  
0 km 0.02 km 0.03 km 0.13 km



The articulation of the project defines aggregates of different types of dwellings, from the residence for the elderly, the general living in temporary housing for workers, and properly integrated in relation to each other and with the public spaces (laboratories, nursery, reading room, space for children).  
The development of the project, however, ensures privacy with a presence in every plan, private patios, courtyards and semi-public areas.

The aim of the project is to be a starter point for future development that will underline the importance of infrastructure as development spine.

