



Heart of the Matter

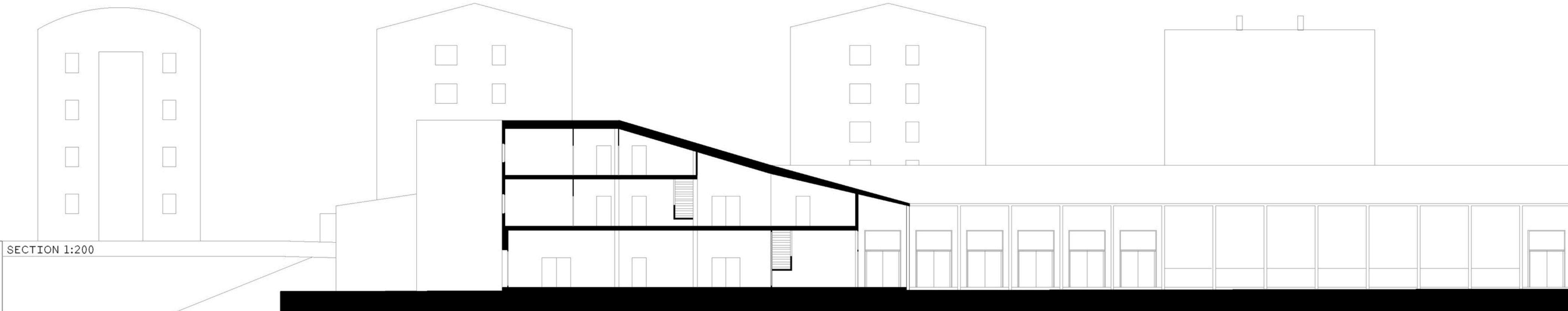
The project site in Vienna is situated in the 13th district of the city, called Hietzing. It is one of the wealthiest areas in the city with a very low building density and offers a wide variety of buildings, streets and public spaces adjacent to huge patches of grass-land and forest. The area seems to lack a clear urban structuring plan and a distinct centre. Its character is the product of disjointed fragments of urban planning and can be described as a loose formation of buildings in an open and lush landscape. This is mainly a result of its historical development, which indicates that Hietzing has evolved from a number of smaller villages.

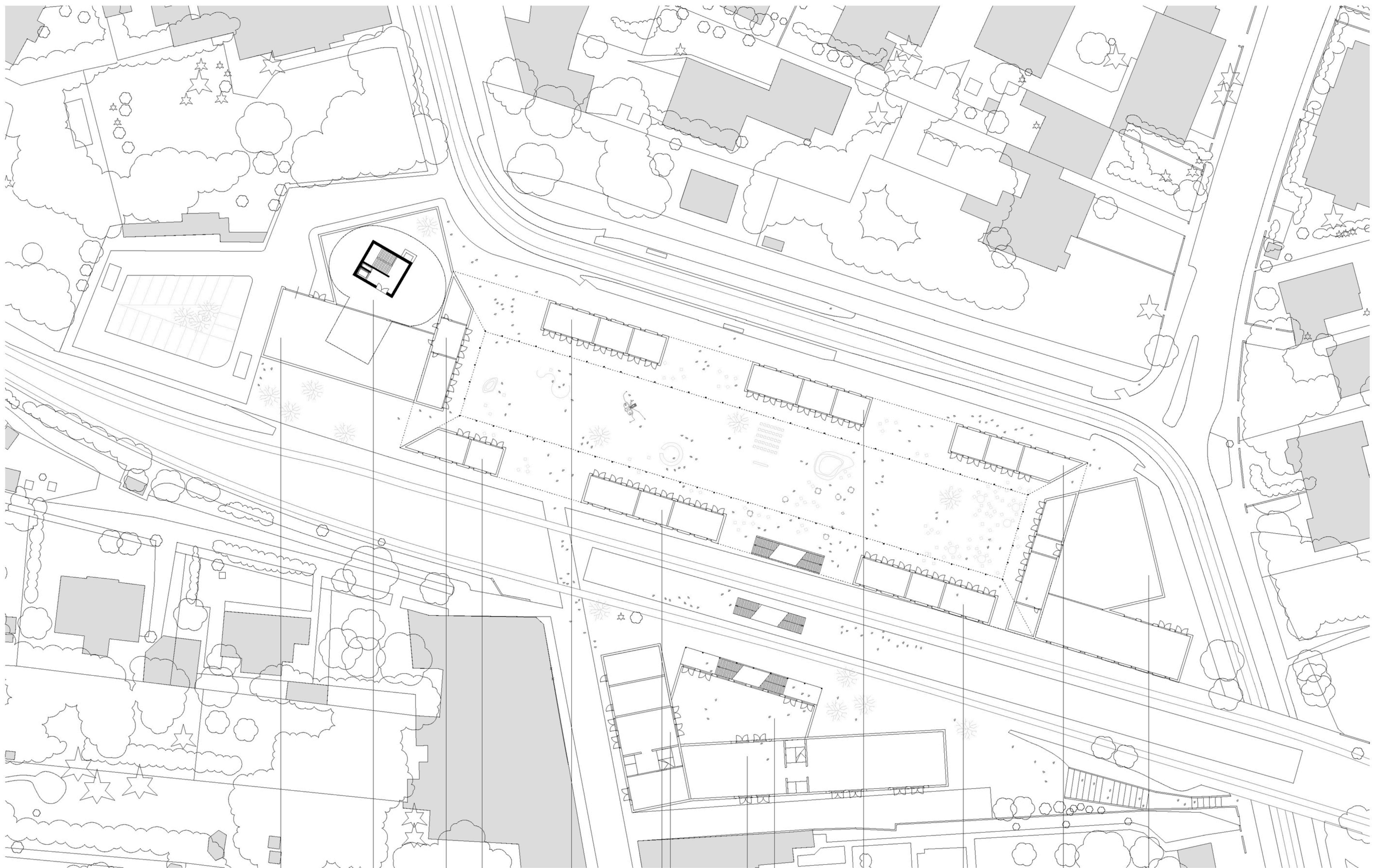
The project site offers the opportunity to create a central point in this area. Not only is it a relatively large empty space – a remnant of the Lainz tunnelworks in the area – it is also located in the heart of an infrastructural node enclosed by the S-Bahn, a tramway and bus routes alongside roads, walking trails and cycling paths. The Spießing railway station constitutes an important crossing-point of these infrastructural routes. Thus the project site, which will incorporate the proposed Spießing station, forms a natural central spot within the larger urban district. The projection that travel-related businesses, communal services and specific types of housing would benefit strongly from a central location seems only logical.

The 'Heart of the Matter' recognizes the opportunities for these new facilities but seeks primarily to create a clearly defined open space in the centre of the project site. Its public plaza forms a 'room', an open-air hall that both the users of the infrastructural systems and local residents can pass through, meet, congregate or just hang around. It is an 'empty' centre created by a roof, a strict rectangular ring that covers a walkway circling the plaza, and volumes for small shops and services. In between these volumes, large gaps create openness and transparency towards the neighbourhood and offer covered areas connected to the public plaza. The openings are positioned in a specific way, reacting to the adjacent roads, the train station and tram and bus stops. The public plaza offers space for markets, festivities and official events. The strict rectangular space with its bordering colonnade refers to a classical forum. In addition to its original function as a marketplace, this was a gathering place of great social significance, and often the scene of various activities, including political discussions, debates and meetings. Three annexes are connected to the formal rectangular figure that forms the core of the project. Outside the ring they offer great flexibility regarding size and shape. These buildings accommodate the larger programmatic elements, such as the ambulance station, the health centre, the pavilion of generations, apartments for various users

and the railway station. Two of the annexes are physically connected to the plaza; the third is separated from it by the railway tracks, but clearly makes a visual link through its position facing the largest opening in the ring. The shapes of these three buildings respond to the existing built environment and embed the project in its urban setting. Both the annexes and the core are covered by the same roof which forms the structuring element of the project.

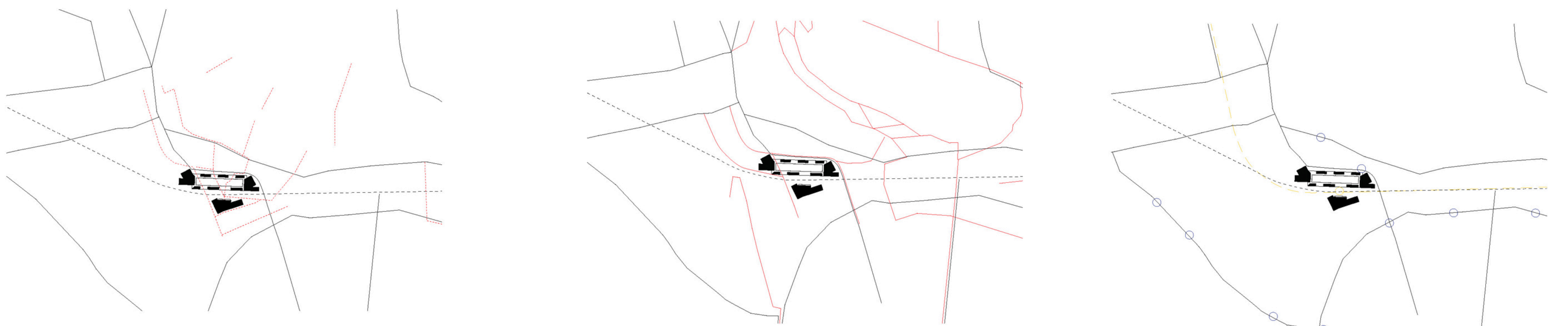
'The Heart of the Matter' creates a strong contrast between the inside and outside of the ring. While the outside responds to the built environment, the public plaza on the inside generates its own characteristics: formal and with a certain monumentality to underline its position in the area, but adaptive and flexible enough to accommodate its multifunctional use.





PLAN 1:500

- Hall vehicles of the Ambulance station 450 m²
- Courtyard and emergency exit
- Ambulance station 750 m²
- Bicycle work-shop/storage/flower shop 160 m²
- Other Urban facilities 180 m²
- Golden Age living (19 single room, 16 couples + common spaces) 4,500m²
- Station facilities/common space 430m²
- Bakery/Magazine shop/fastfood 160m²
- Other Urban facilities 180m²
- Other Urban facilities 170m²
- Pavilion of generation/temporary living 1500m²



- MAIN STREET
- - - - - LAINZ TUNNEL
- - - - - RAILWAY
- - - - - FAST TRACKS
- METRO
- OPEN CYCLE STREET
- PEDESTRIAN PATH
- TRAM STOP
- METRO STOP

SCHEMES OF PEDESTRIAN PATH/CYCLING PATH/PUBLIC TRANSPORTATION



