

concept

In general terms, the project proposal identifies and enhances a linear green axis along the rail infrastructure. This axis connects two large-scale green spaces located to the east and west of the project. Along this axis, several small actions are made to enhance it as an attractive urban space. These actions are mainly 3 types. Implementation of new tree plantations, performing bonding connections, and inclusion of pedestrian and bike lanes with their facilities.

All this activity of the linear axis concentrates and intensifies at the project location. The strategic situation of two facing pieces sets the empty space as an area of activity where all the flows and all activities converge. That's why these two pieces contain the whole program to create a multipurpose space where people from different ages, interests and activities mix in the different sites to achieve 24 hours a day 365 days a year activity.

We seek a mix of uses at all levels to enhance a continuous activity. That's why the annex spaces are free from constructions, and housing is integrated in the program band.

The structure and construction of the building with different degrees of transparency allows to view the activity at different heights as if they were glazes of activity, as a theatrical scenes. Outgoings give value to floor space, since indoor activities can be developed here.

We want the building to stand out the activity so that the architecture is not too tangible, not to bother. We create an environment, a landscape, activities, with people and vegetation, not fencing.

We can see the entrepreneurs, the students, the regular users, occasional users, the permanent inhabitants, so everyone can use the resources of the building to develop their interests. We create relationships.

We try to make an interactive site useful for the citizen, with a user-friendly interface and the possibility of real time connection with places, people and activities. We can imagine an event, or thousands at the same time, a lot of participants wanting to meet each other, a forum, a bazaar ... a square ... everyone in Vienna inside, everyone in Vienna outside, ... they all fit, everything

constructive proposal:

The proposal is built with slim porches of prefabricated beams and columns, double glass and methacrylate facade, thin slabs, and movable panels, ceilings and floors that help configure spaces as needed. All the transversal beams have the same span and have the same section, come prefabricated and may be mounted on site. Prefabrication construction will reduce costs and will allow for quicker deadlines, because one piece will be used to construct the entire building. Besides the fact of placing always the same piece will make the program more flexible since all the bands will support the same loads. The overhangs are built as great height triangulated beams.

The morphology of the structure makes the execution to be performed easily by advancing the construction phases according to demand.

engawa (double interstitial space)

The proposal aims to achieve an economic, flexible and easy to assemble piece.

The dwelling consists of three elements: a central, main, space, framed by two secondary lateral spaces, called engawa. These two interstitial areas, generated between two planes include all the facilities and furnishings. These two service areas are the main novelty, freeing up or furnishing the main diaphanous room. Flexible and diaphanous spaces, with shifting boundaries between work and leisure.

The housing consists of a core A, diaphanous and versatile, to which two light structures habitable B + C are attached, which allow for flexible space and reorganize the house itself depending on the situation

The two engawa spaces are not understood as service spaces or traditional wet areas, but apart from privacy filters and traditional weather protection, they allow the traditional uses of bathroom and kitchen to be expanded in the house, as if they were pieces of a mecano, allowing a bathtub to be close to the natural light, or to place the bed in summer in the outdoor engawa (double-spaced facade), or extending the kitchen into the central space of the house, taking more importance on it.

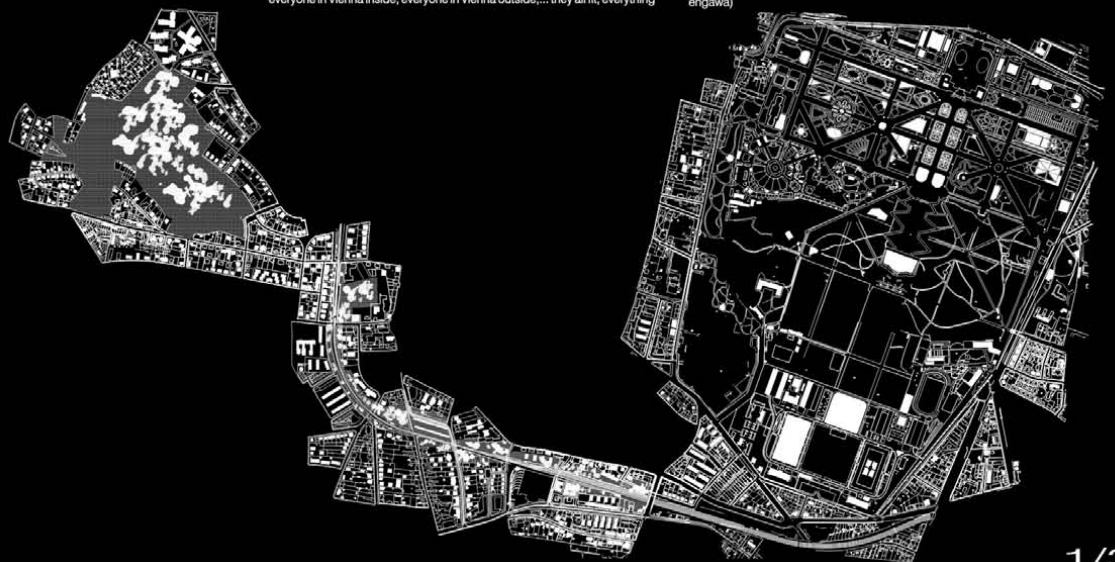
In this case the set is generated by overlapping and stacking these typologies, as the exterior engawa itself is responsible, together with the owner, to generate the facade according to the degree of privacy that is generated in the interior

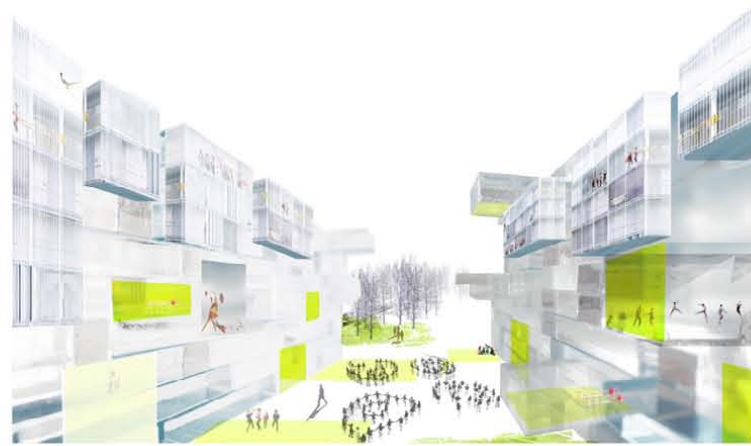
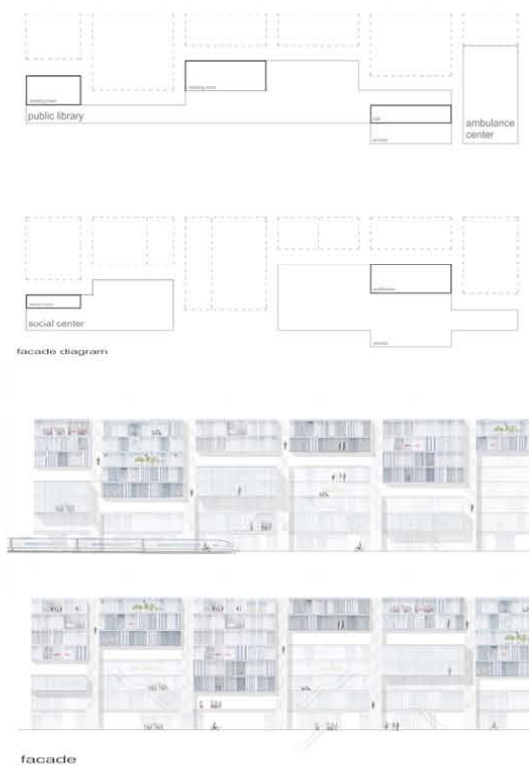
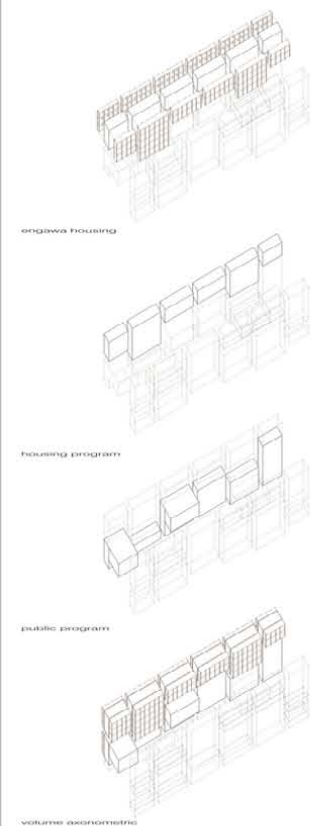
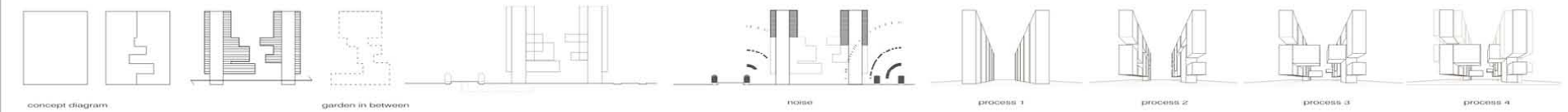
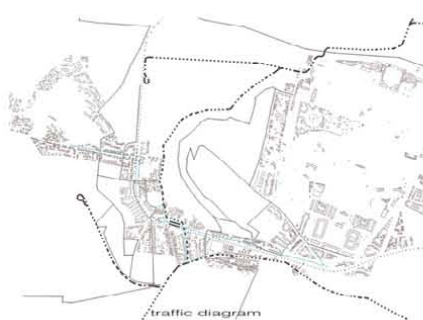
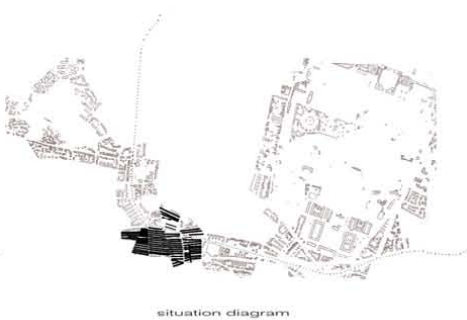
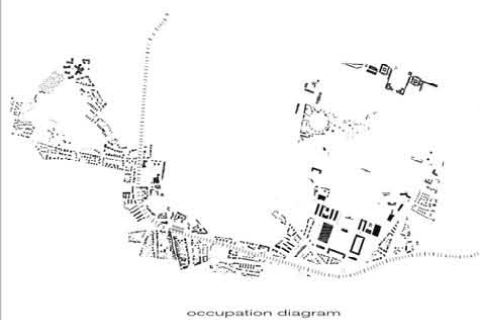
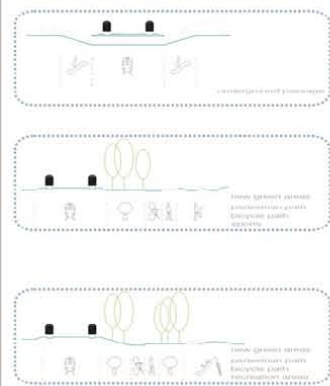
The different topologies are generated from all these rules, piling up in half-towers or half-blocks that can be adapted to the specific geometry of the project.

Engawa construction

Metal structure is constructed with conventional standardized profiles and slabs with steel decking. This building system allows us to reduce costs and shorten the execution time, and it can be executed in phases

facilities are concentrated in the two side spaces (interior and exterior engawa)





In general terms, the project proposal identifies and enhances a linear green axis along the rail infrastructure. This axis connects two large-scale green spaces located to the east and west of the project. Along this axis, several small actions are made to enhance it as an attractive urban space. These actions are mainly 3 types. Implementation of new tree plantations, performing bonding connections, and inclusion of pedestrian and bike lanes with their facilities.

All this activity of the linear axis concentrates and intensifies at the project location. The strategic situation of two facing pieces sets the empty space as an area of activity where all the flows and all activities converge. That's why these two pieces contain the whole program to create a multipurpose space where people from different ages, interests and activities mix in the different sites to achieve 24 hours a day 365 days a year activity.

We seek a mix of uses at all levels to enhance a continuous activity. That's why the annexes spaces are free from constructions, and housing is integrated in the program band.

The structure and construction of the building with different degrees of transparency allows to view the activity at different heights as if they were glazes of activity, as a theatrical scene. Outgoings give value to floor space, since indoor activities can be developed here.

We want the building to stand out the activity, so that the architecture is not too tangible, not to bother. We create an environment, a landscape, activities, with people and vegetation, not fencing.

We can see the entrepreneurs, the students, the regular users, occasional users, the permanent inhabitants, so everyone can use the resources of the building to develop their interests. We create relationships.

We try to make an interactive site useful for the citizen, with a user-friendly interface and the possibility of real time connection with places, people and activities. We can imagine an event, or thousands at the same time, a lot of participants wanting to meet each other, a forum, a bazaar... a square... everyone in Vienna inside, everyone in Vienna outside... they all fit, everything fits.

The distribution of the program becomes more private as it rises. Houses are located on the upper floors, away from noise and activity of the lower floors.

PC 004 WIEN_ÖSTERREICH

