

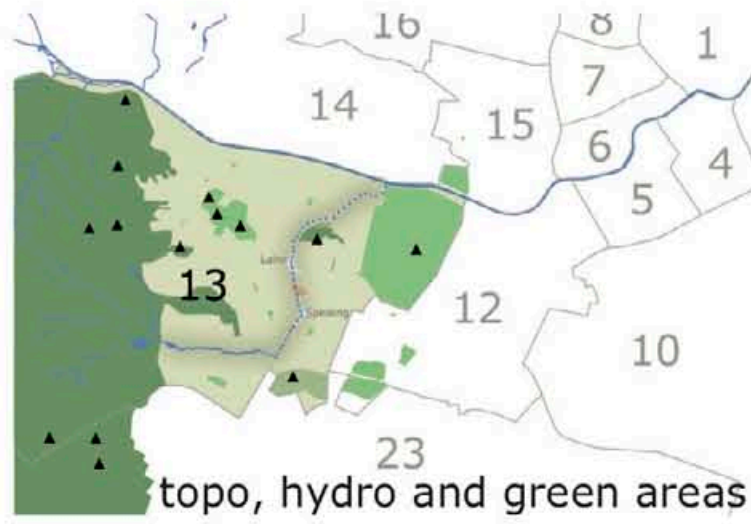
LS013 «meet me halfway!» wiën

1

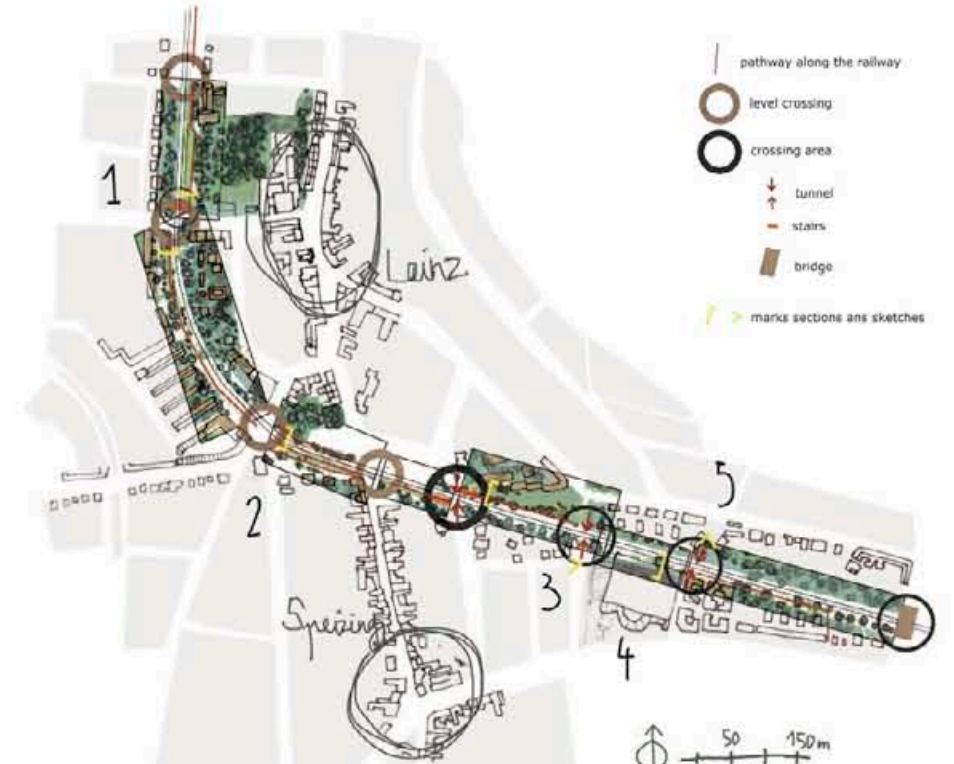
«meet me halfway...»

site's location

- half way between older villages, Lainz and Speising, stretching towards each other along the Lainzerbach valley.
- proximity to the Viennese Woods, its relaxing and refreshing heights (Tiergarten, Königberg, ...), or the renamed Schönbrunn Castle.
- the relief shows up here and there around, as the nearby Roterberg, Königberg, Tiergarten heights or Southern Rosenberg mark the territory.



Nowadays, the railway, run through from Northwest Hütteldorf to Southwest Meidling, has taken river's urban pattern: bar embankments along its flux, and necessary bridge crossings here and there reach the other side. Zooming out, an infrastructure valley, coming from the North Wien River banks to Southern part of Schönbrunn park (Fasangarten) and furts makes its way out. Being a of it, the project's site app as a clearing, a respiration.



neighborhood existing situation



the river's urban pattern

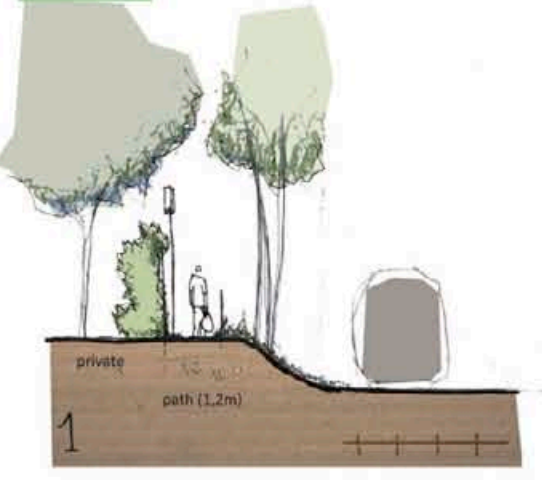
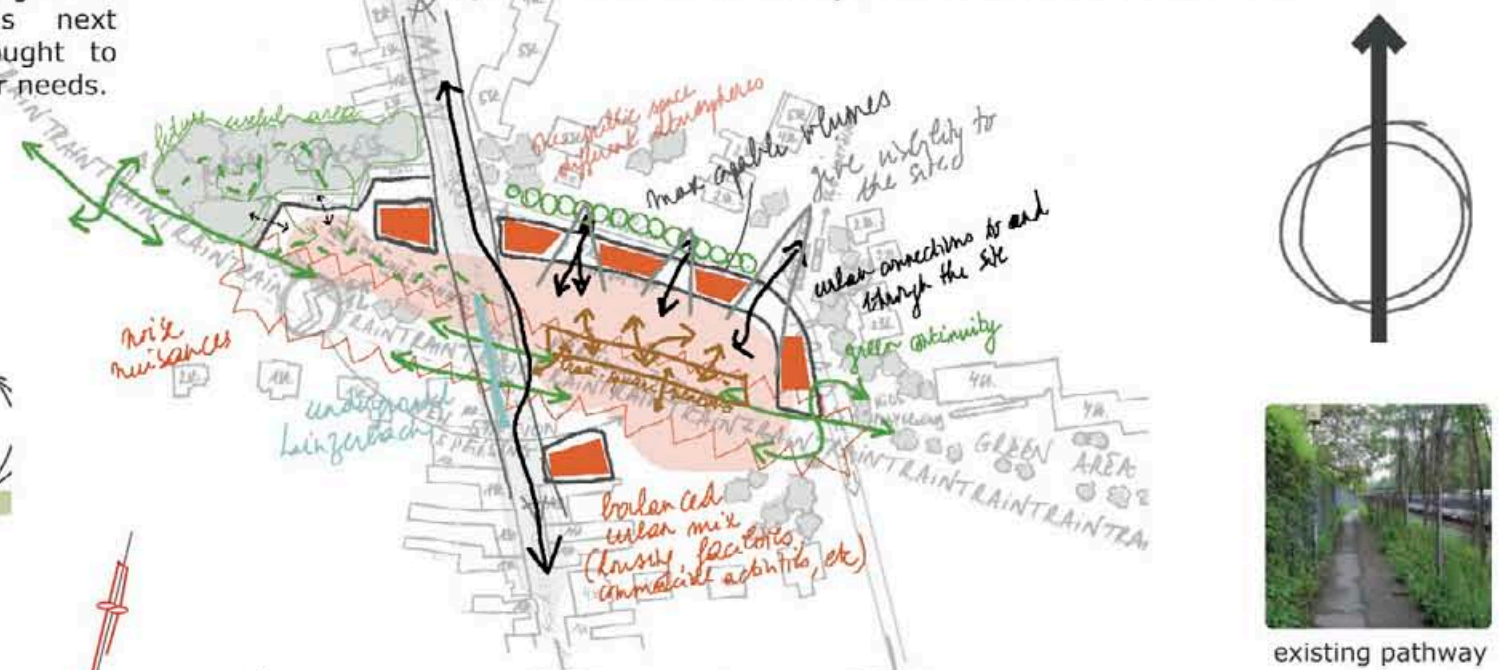


main public transport network in area

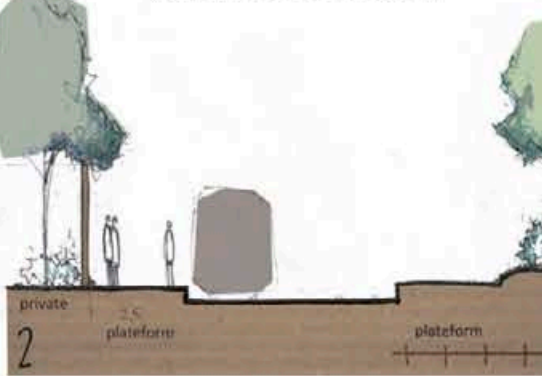


Speising S-Bahn station and the project site itself are located halfway between Lainz and Speising centres. At the very heart of numerous important facilities, centres of employment and public services, such as hospitals, senior housing, primary and high schools, adult education centre, etc. Sport and leisure (i.e. parks) facilities are also pretty close by. Some small extra recreational areas could be created, while specific/adapted management for outdoor playgrounds next to schools should be sought to accommodate large outdoor needs.

site's development main intentions



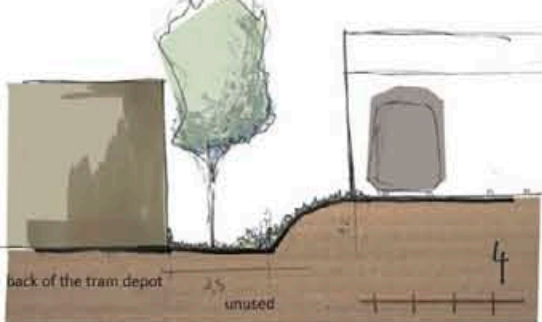
in between path. looking downward you can see the train



existing situation of the platforms



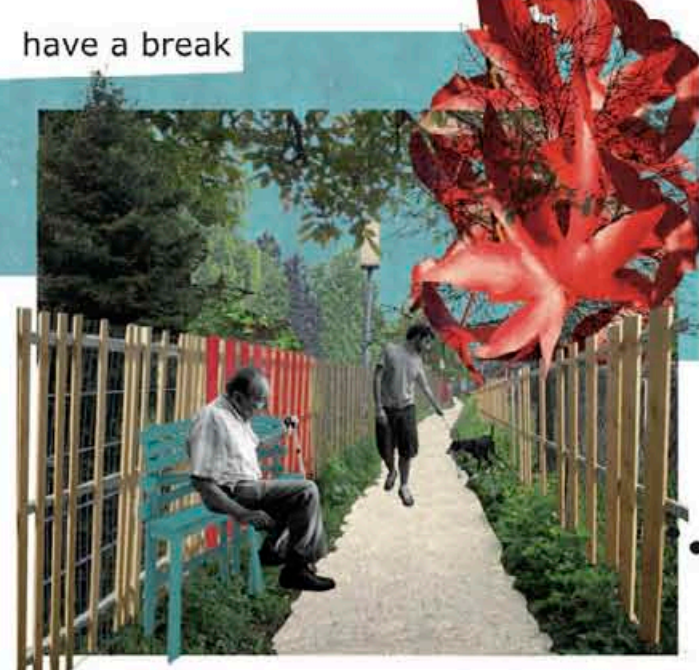
residential street, the atmosphere is created by the private gardens



unused path today, by opening it, looking upward you could see the train.



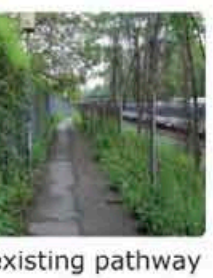
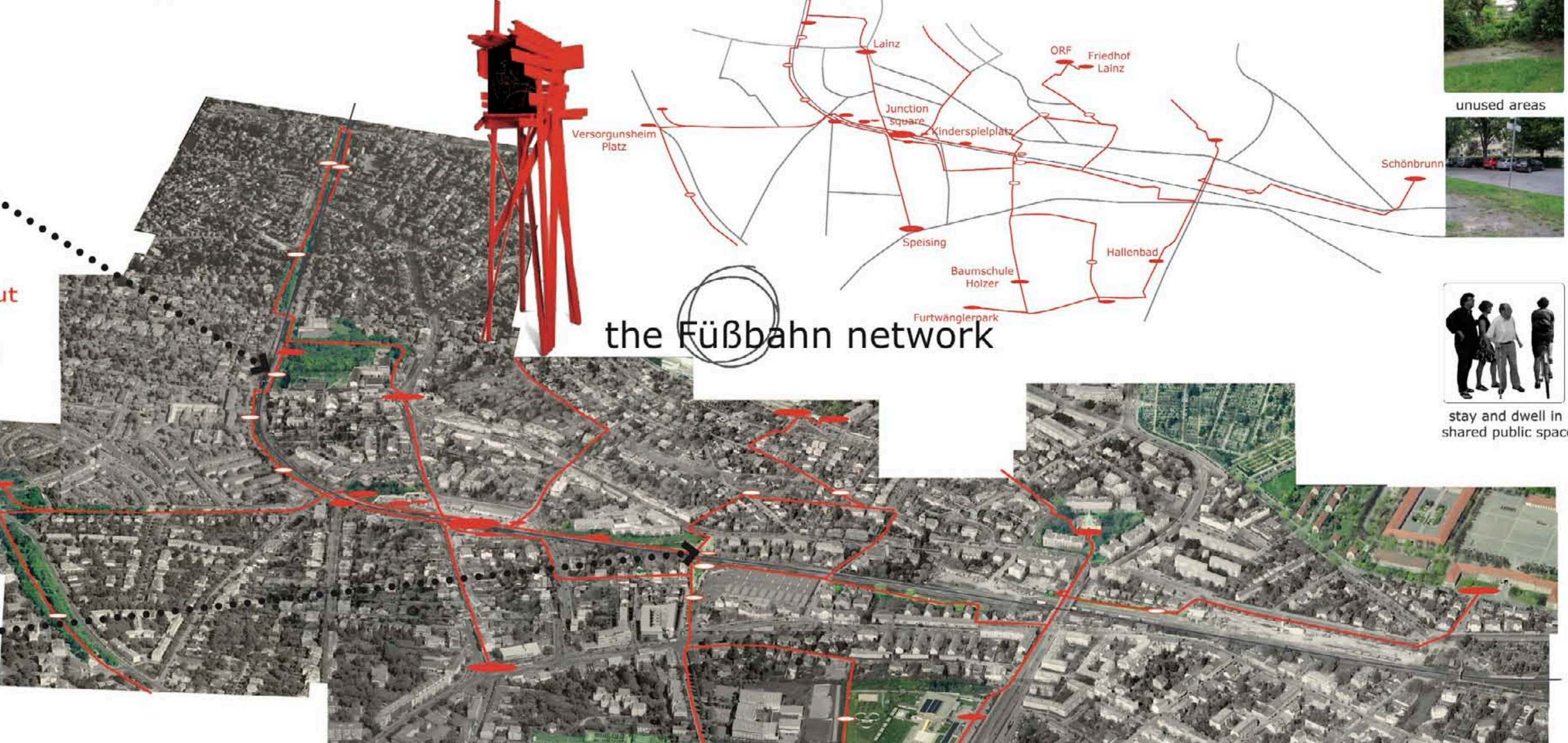
crossing under railway lines



...by Fußbahn...

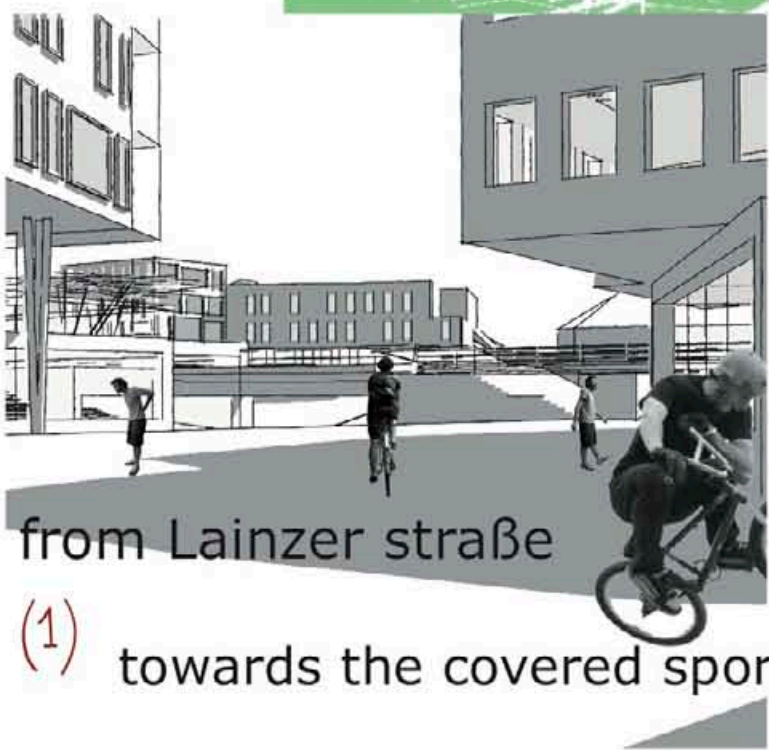
- breathe out
- breathe in

the Fußbahn network



strategic site

LS013 «meet me halfway!» wiën



towards the library

from Lainzer Straße
(1) towards the covered sport hall



(2) towards the Junction square
from Hofwiesengasse



(3) stepping out of the S-bahn



view towards Lainz since the S-bahn

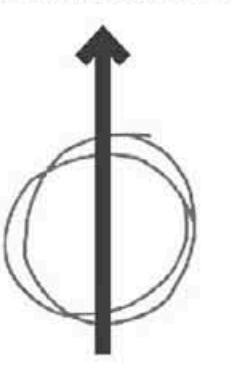
- indoor playground
- outdoor playground
- Prunus serrulata, Prunus cerasifera 'nigra', Pyrus pyrifolia, Malus tschonoskii
- mineral low wall, existing planted embankment
- round bench on a blooms meadow
- a Japanese step on a wetlands
- a Japanese step on a water mirror
- Salix caprea, Populus tremula, Betula utilis, Alnus glutinosa, Fraxinus americana.
- Platform's canopy
- playground mixed in the stairs
- elevator
- arrival of the banister. Planted with whitewoods
- toolshed for the kitchen gardens
- plots of kitchen gardens



- a. (8,5m) indoor playground
- b. (12,8m) library and «Junction Gardeners Association»
- c. (18/15m) commercial facilities, public services and housing
- d. (15,5m + green houses on rooftop)
- e. (18,5m) (20m) ambulance centre, day care hospital, bike services, info point, restaurant, green houses on roof top
- f. (6/9/12m) senior housing
- g. (6/9/12m) senior housing

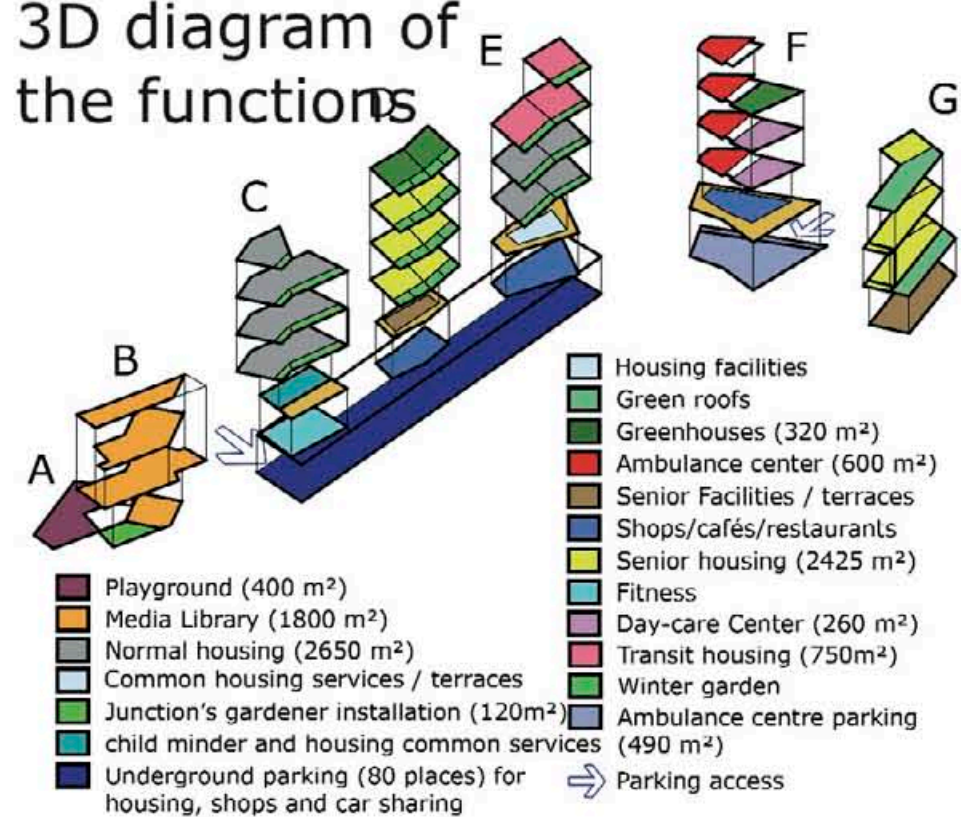
plan 1/1.000

...at the Junction square! »

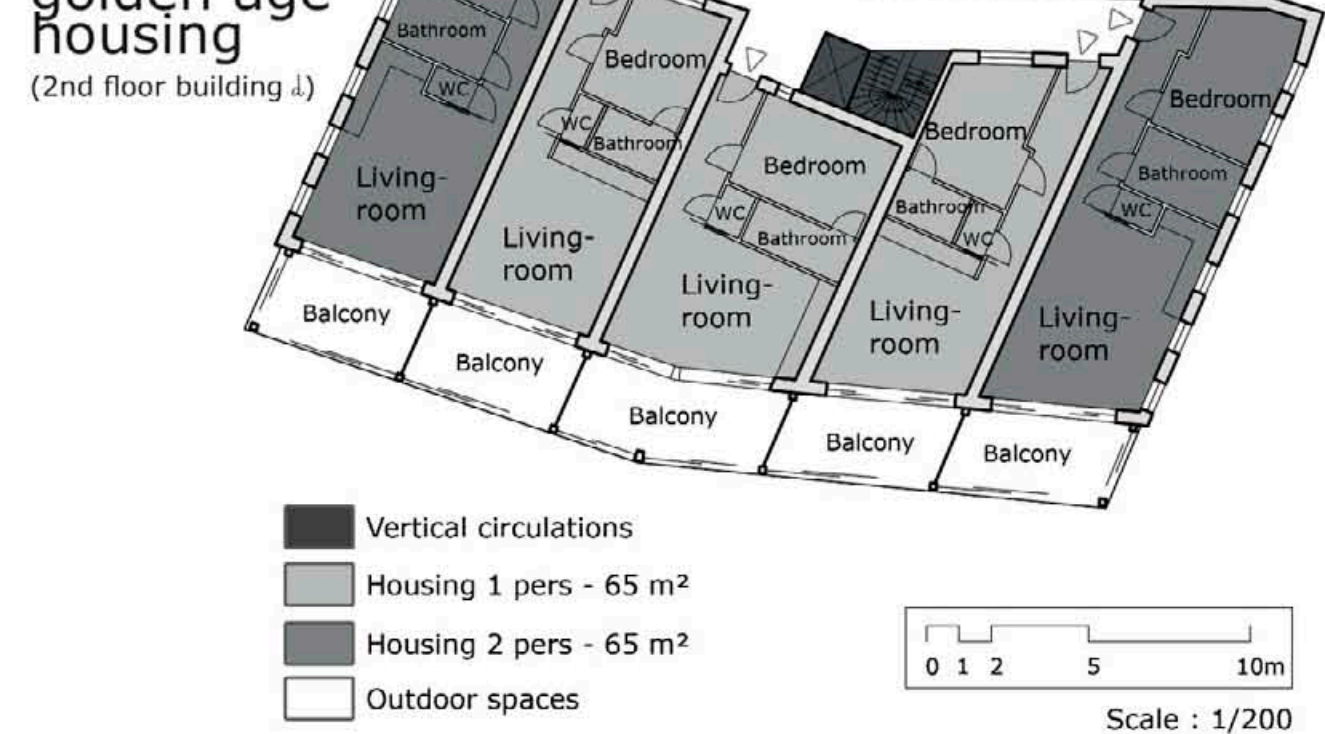


axonometric view
Junction square
as a clearing

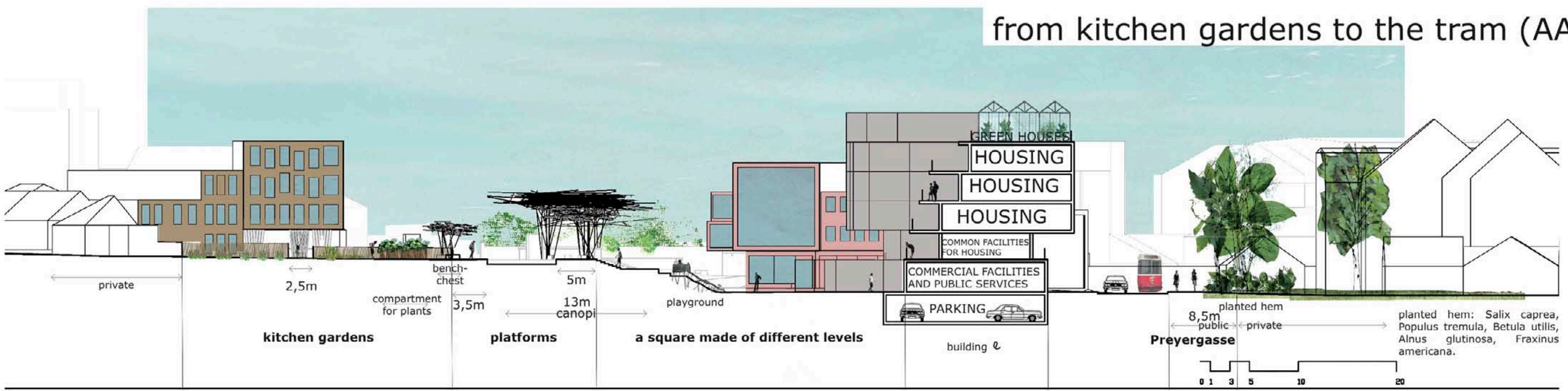
3D diagram of the functions



plan 1/2.00 zoom on a golden age housing

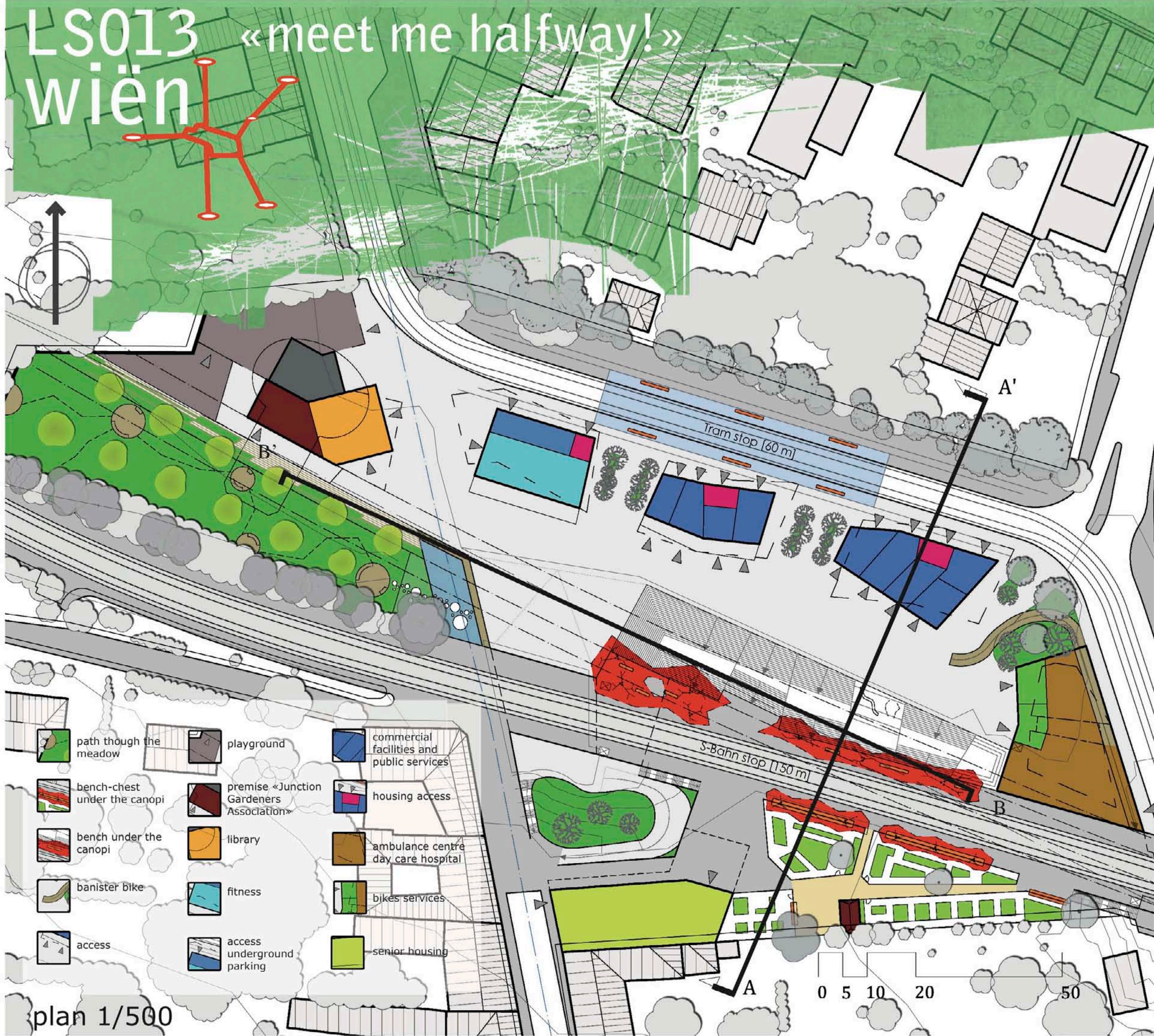


from kitchen gardens to the tram (AA')



LS013 «meet me halfway!» wiën

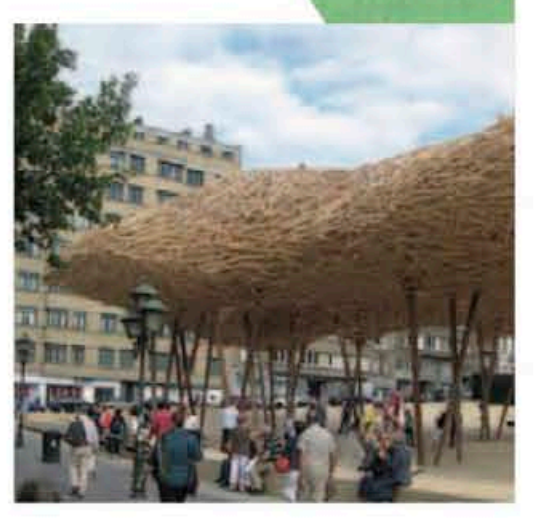
3



- path through the meadow
- bench-chest under the canopi
- bench under the canopi
- banister bike
- access
- playground
- premise «Junction Gardeners Association»
- library
- fitness
- access underground parking
- commercial facilities and public services
- housing access
- ambulance centre day care hospital
- bikes services
- senior housing

plan 1/500

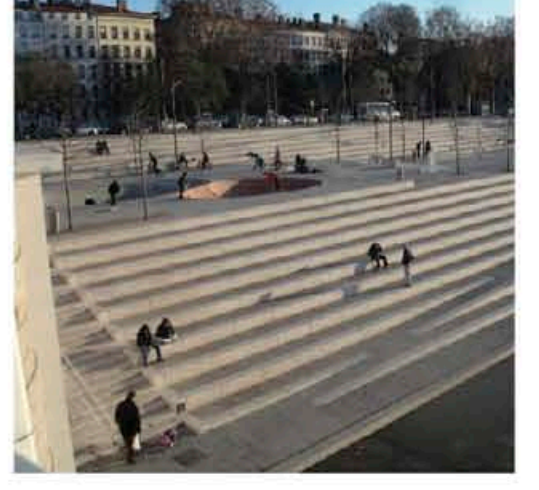
Inspiration for the canopi
Arne Quinze, a belgium artist.



outdoor playground mixed
in with the strairs. Parc des
Cormailles, France.



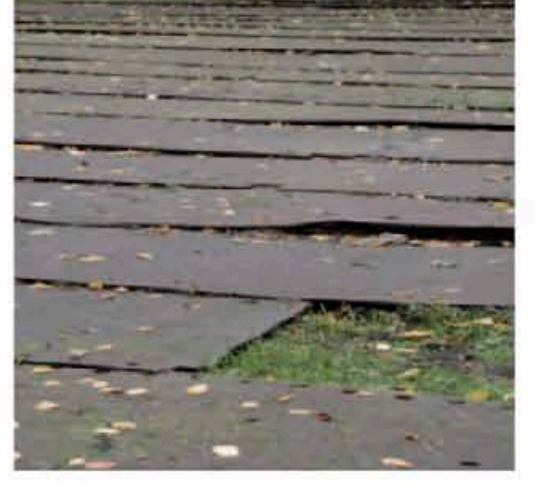
The Rhône banks, Lyon,
France.



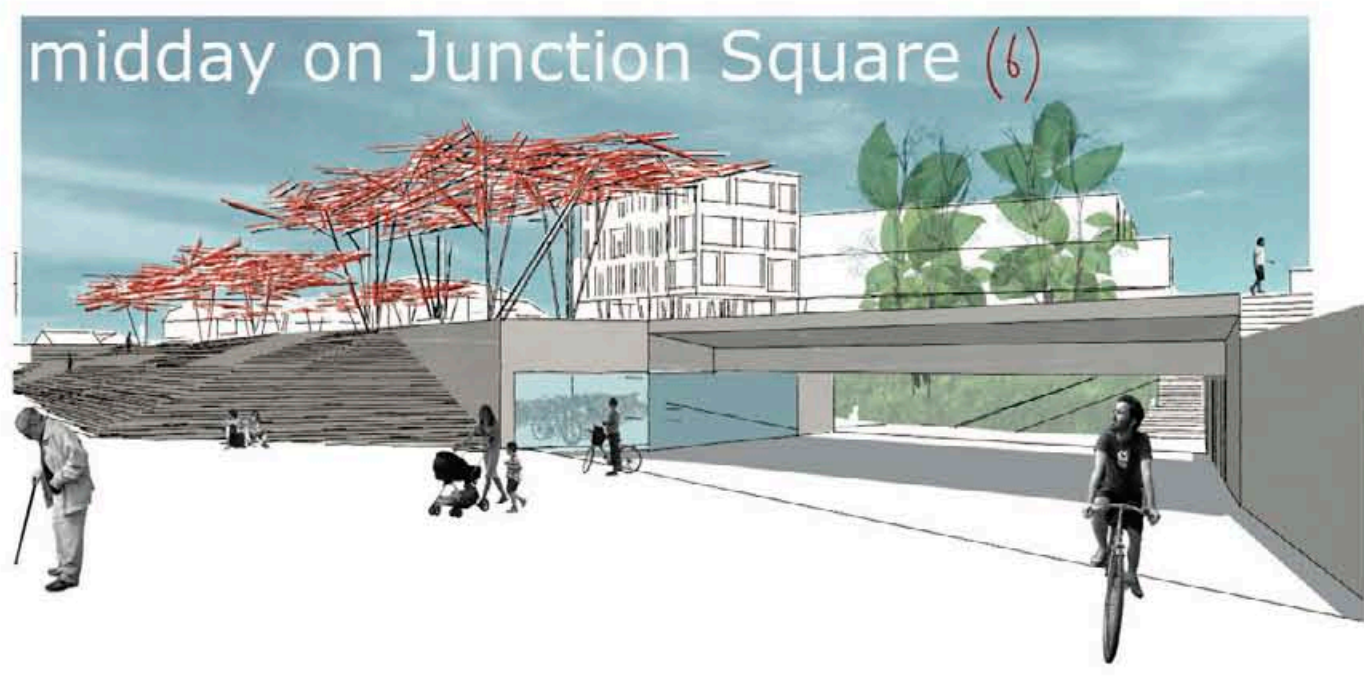
Water mirror and wetland.
Ostpark, Amsterdam.



pavement for the parvis in
front of the library.

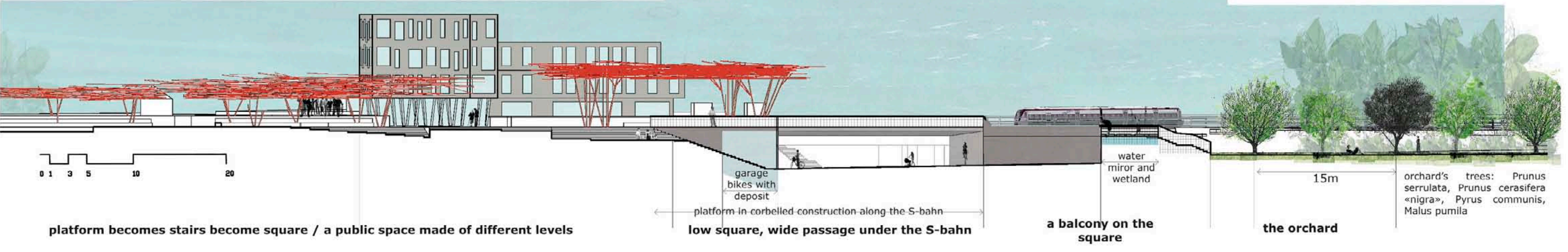


an afternoon in the orchard (5)



midday on Junction Square (6)

from platform to orchard (BB')



platform becomes stairs become square / a public space made of different levels

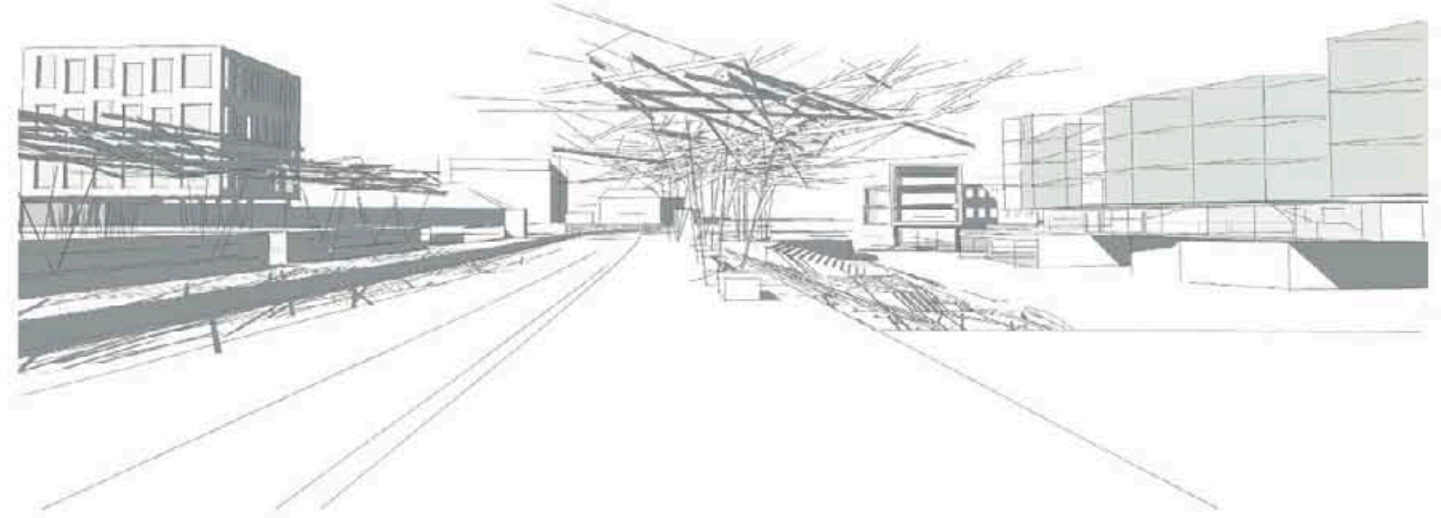
low square, wide passage under the S-bahn

a balcony on the square

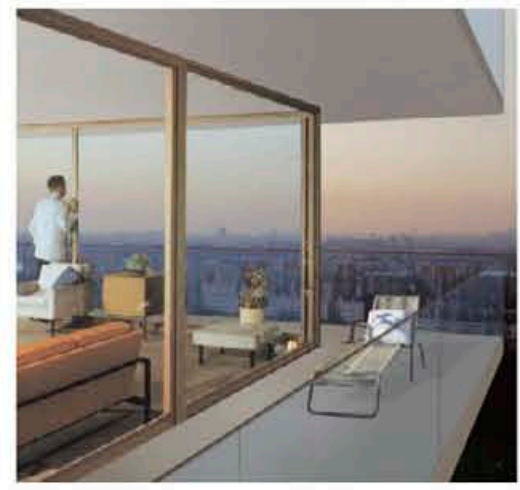
the orchard

orchard's trees: Prunus serrulata, Prunus cerasifera «nigra», Pyrus communis, Malus pumila

Füßbahn path through site (7)



balcony and winter garden.
Lacaton et Vassal.



cherry blossom (orchard)



a compact bunch of birches
(hem)

