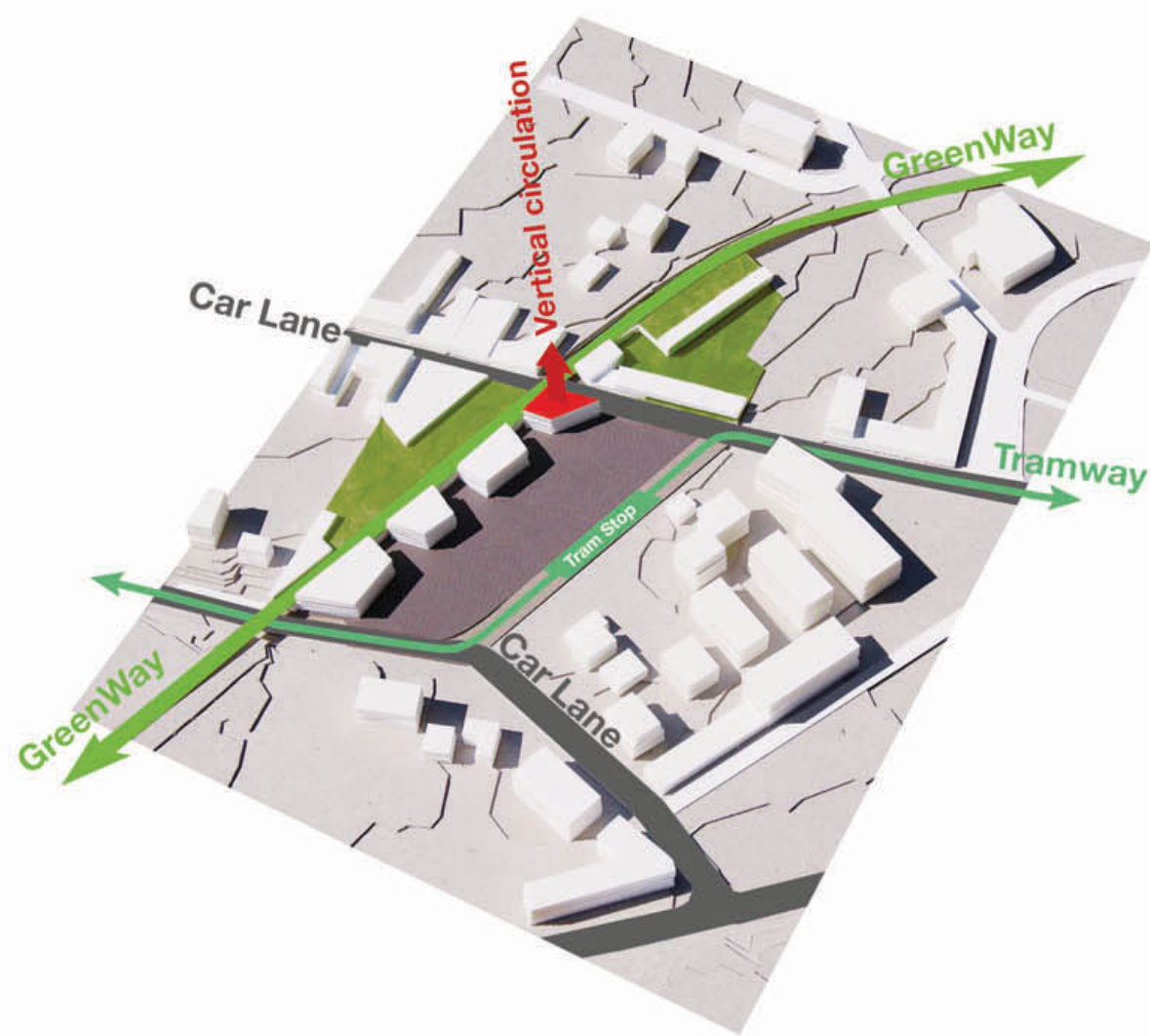
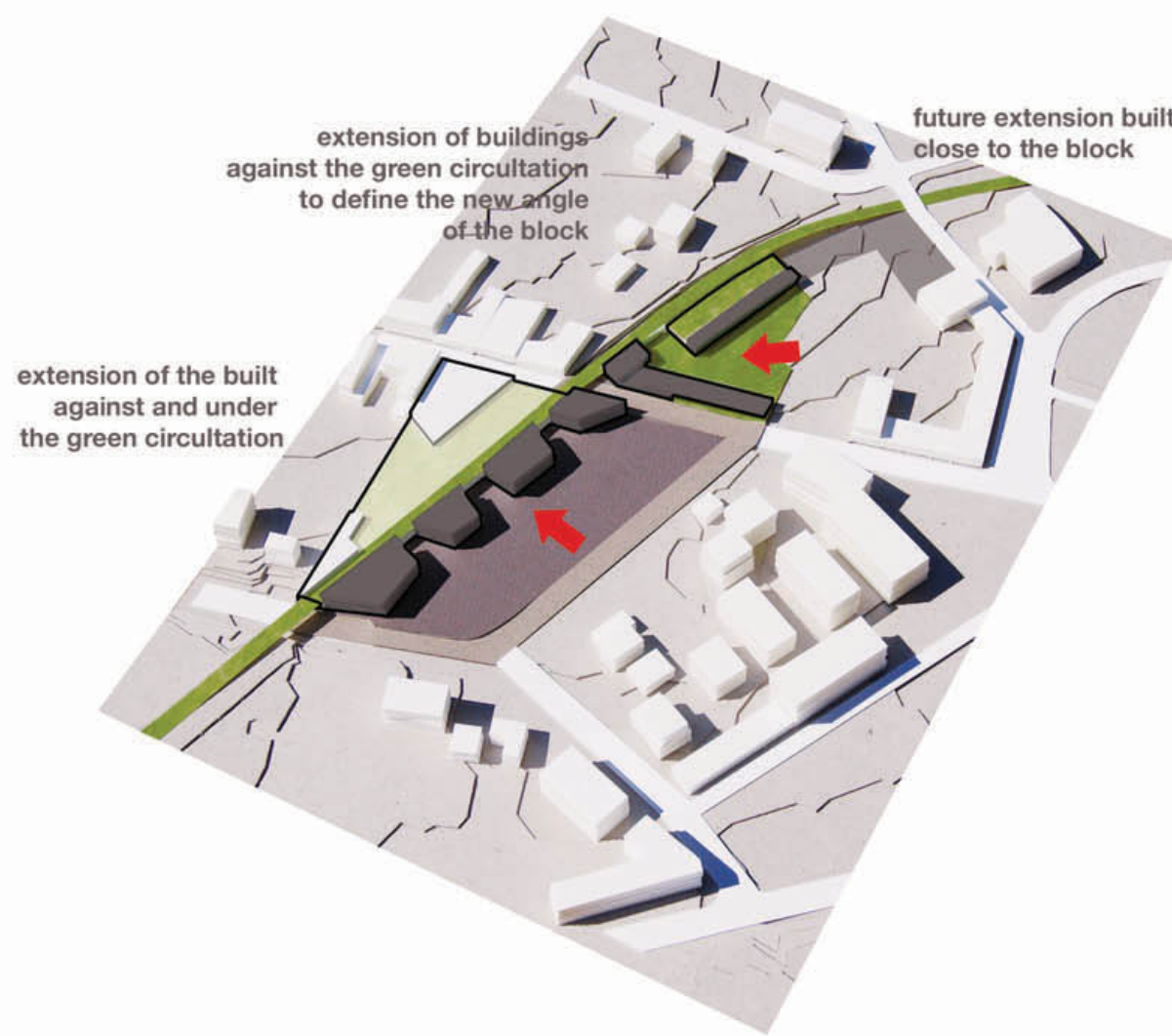




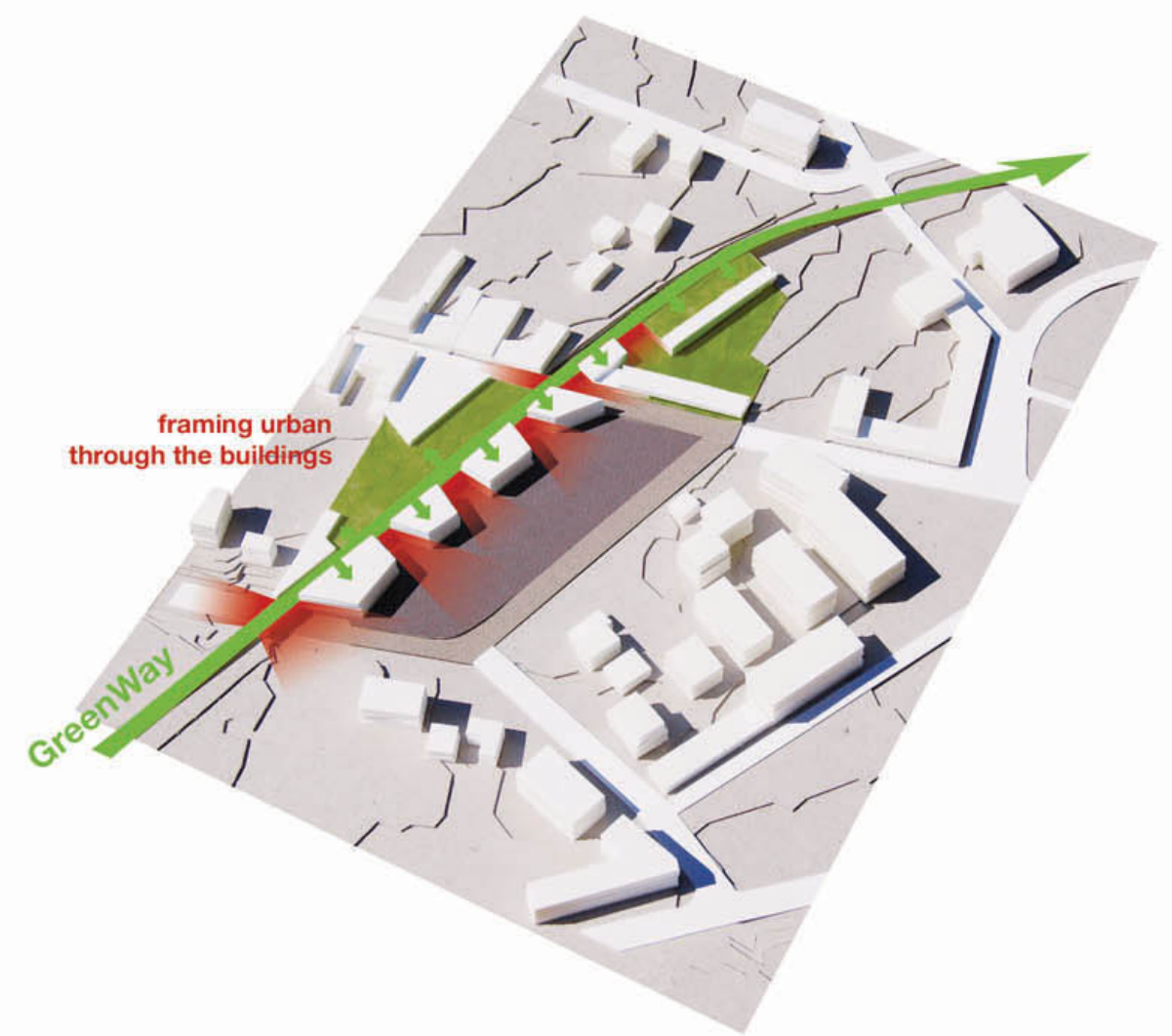
Located in the heart of a residential area of Vienna, and at the crossroads of many areas of transport (train, tram, bus, road ...), the project is as a platform for exchange between the various means of locomotion. It allows the connection between different areas of the city, including the creation of a line of green movement, dedicated to pedestrians and cyclists, which takes the route of the old railway train and raised in the project area. In addition to this path, we find in the basement, and with the same plot, the future rail line (one stop is provided on the site), but also the tram line, bus line, the Hotwiesengasse street and the Lainzer Strasse, which will be extended across the site. The project therefore will be planned by level, according to the various transport and built around a public place and mineral, which will make the junction between different circulations. More precisely, the fronts built south of the plot, and the Lainzer Strasse, will identify the space of the square, the greenway will land on these new buildings to be high, and an element of vertical movement is used to connect between the different levels of the project, from the train to the greenway, through the parking underground, and the place. In addition to proposing a very simple change in the mode of transportation thanks to the connections established, the project also features in the implementation of activities at the neighborhood level. So the public place will hosted many service activities such as restaurant, nursery, medical center, shopping district, while the Green Line will offer many sports (swimming, tennis, squash, football, badminton, basketball), in relation to its status sports, ecological and sustainable. It will also serve some of the homes located along the way, the others being from different access provided, but all coming together around a large common area planted. So by the ease of switching and the many fun activities that the proposed project, we can say, "Now, just Switch and Play!"



Circulation
 Vertical/Horizontal



Location of
 buildings



Connection from
 the greenway

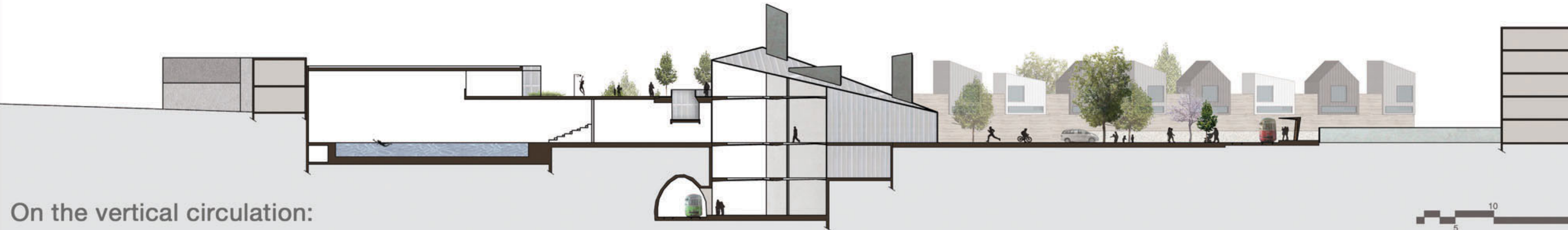


Sections 1/500 arch



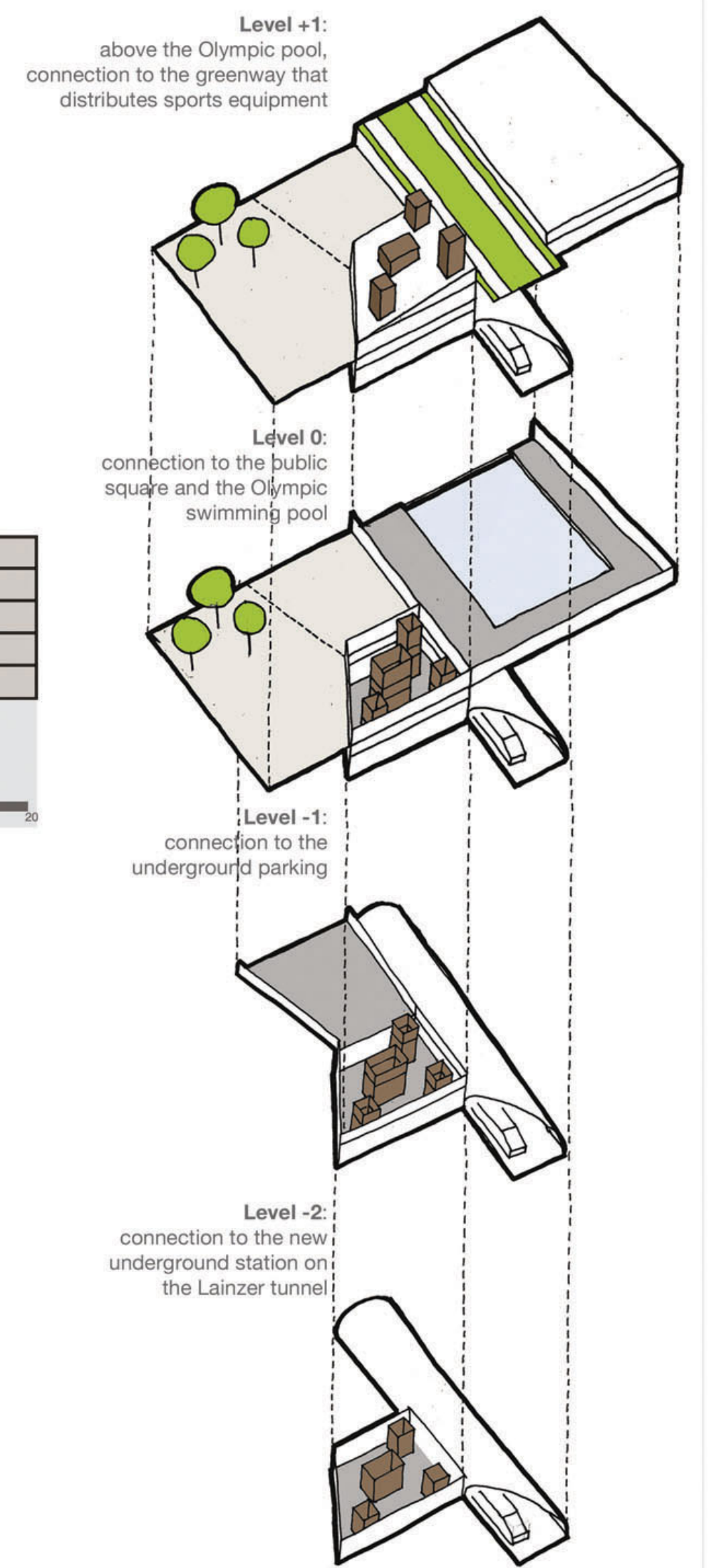
Between the buildings sports:

section on the Olympic pool below the greenway, the Lainzer tunnel, the parking and the public place with the tram stop.

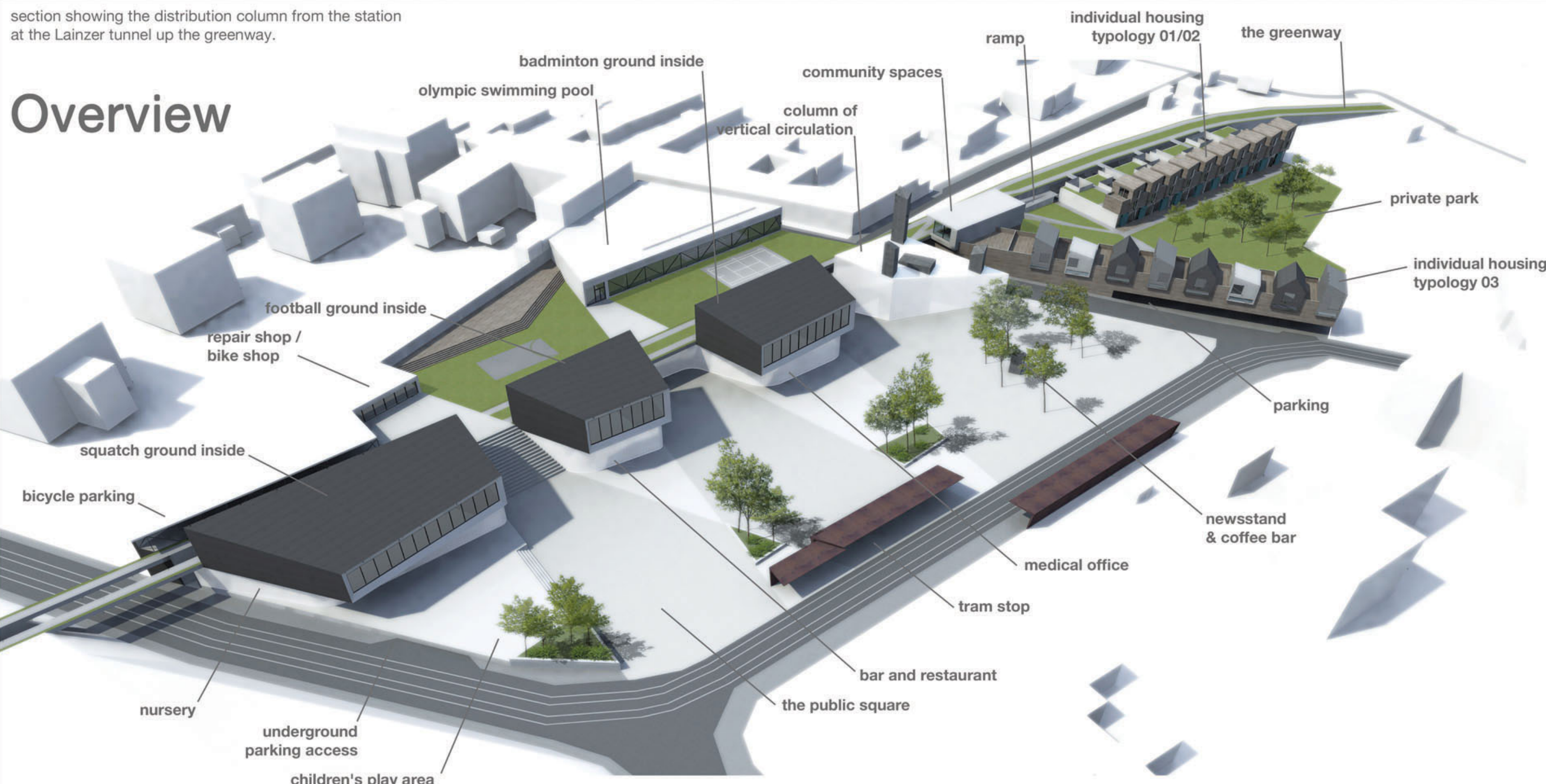


On the vertical circulation:

section showing the distribution column from the station at the Lainzer tunnel up the greenway.



Overview



Axonometric diagram of the vertical circulation

View from the public square



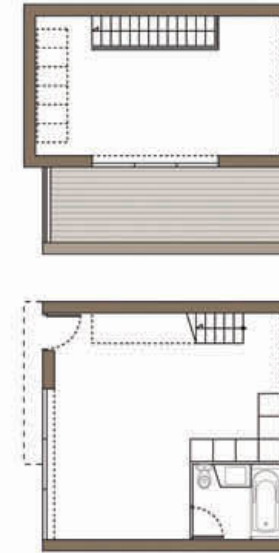
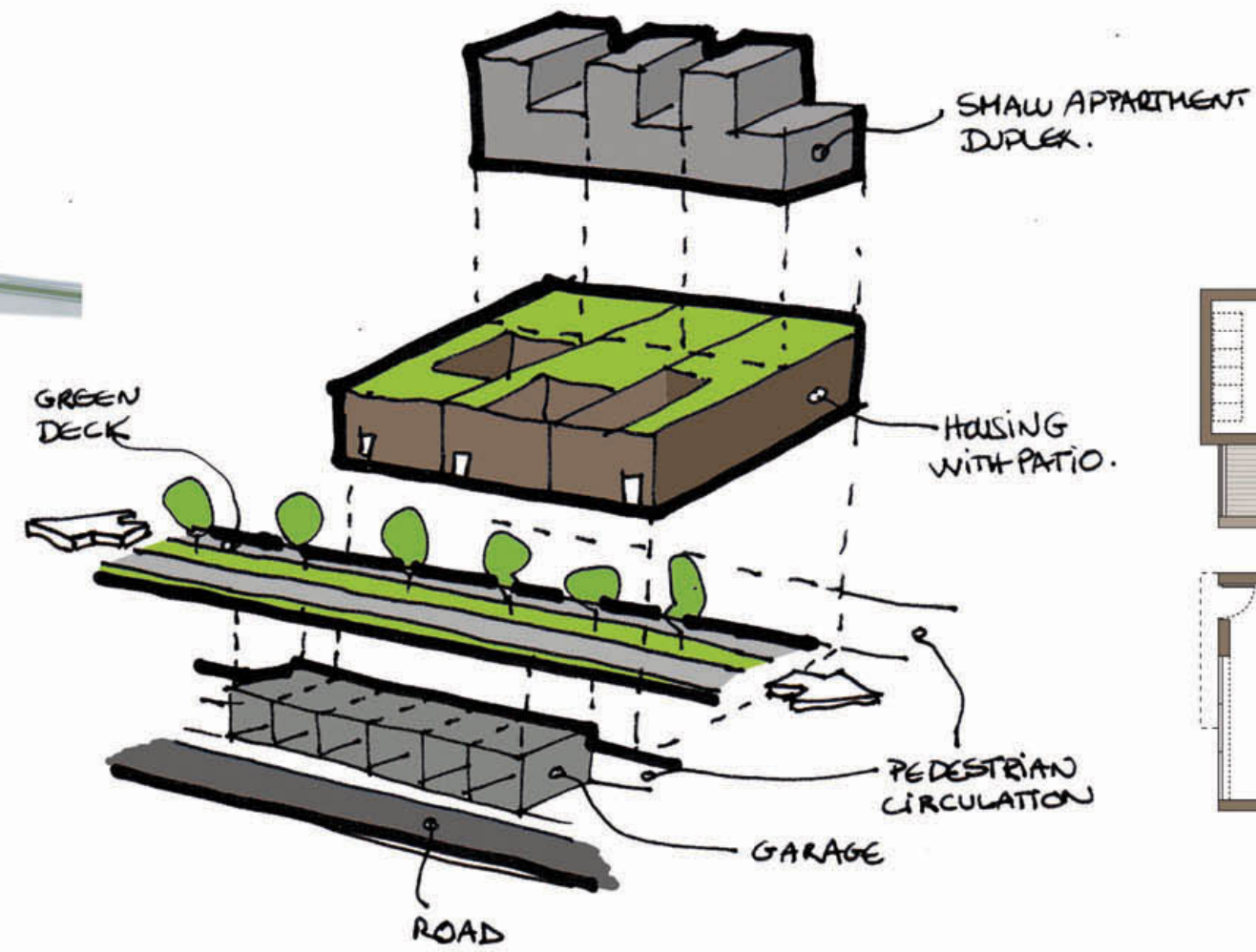
Overview



Typology 01

Mini apartment :

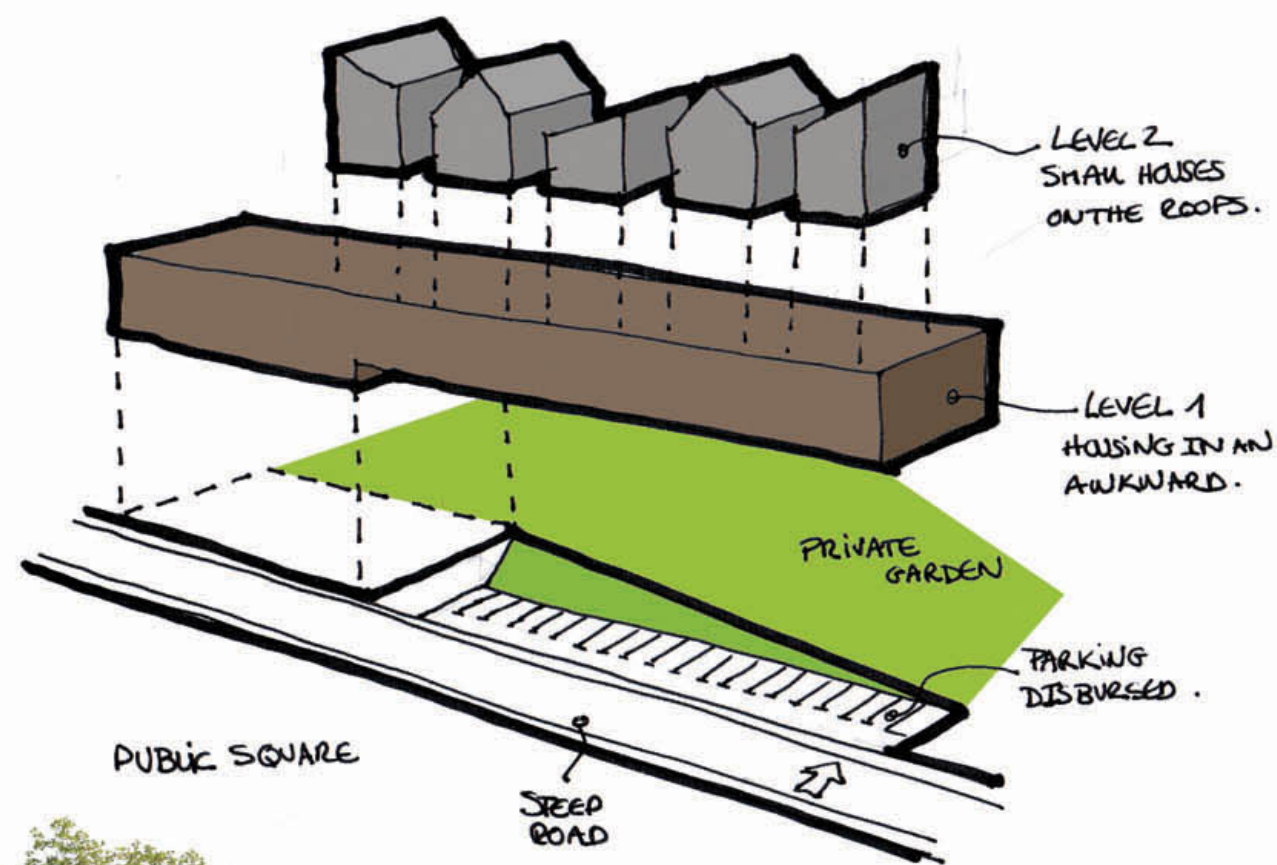
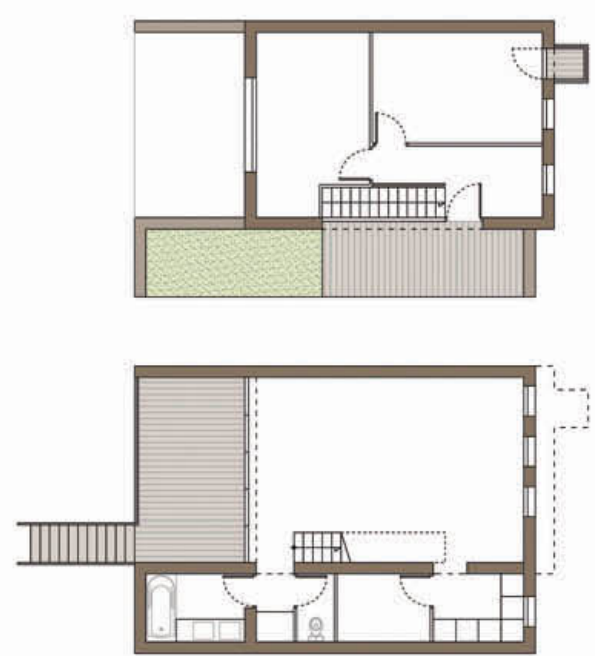
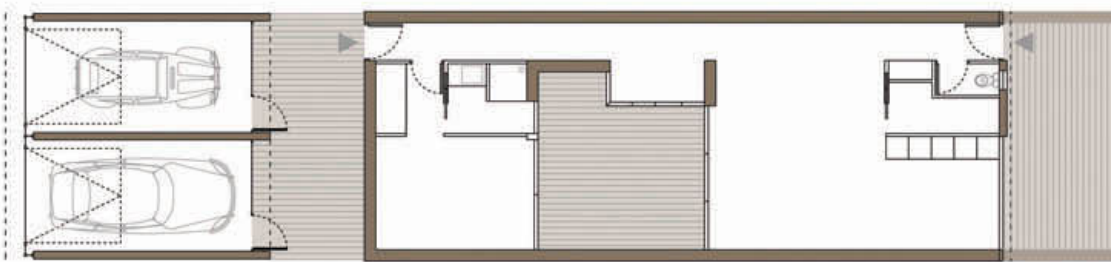
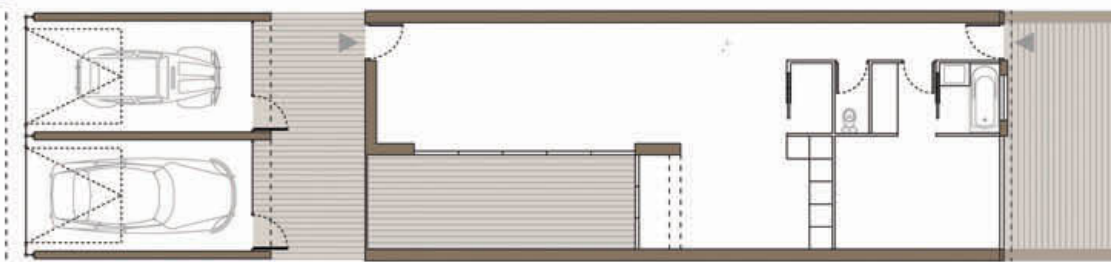
10 units of 55m²
duplex homes
entrance is from the greenway
space above the patio homes
is planted, it is dedicated to
mini apartments



Typology 02

Patio homes :

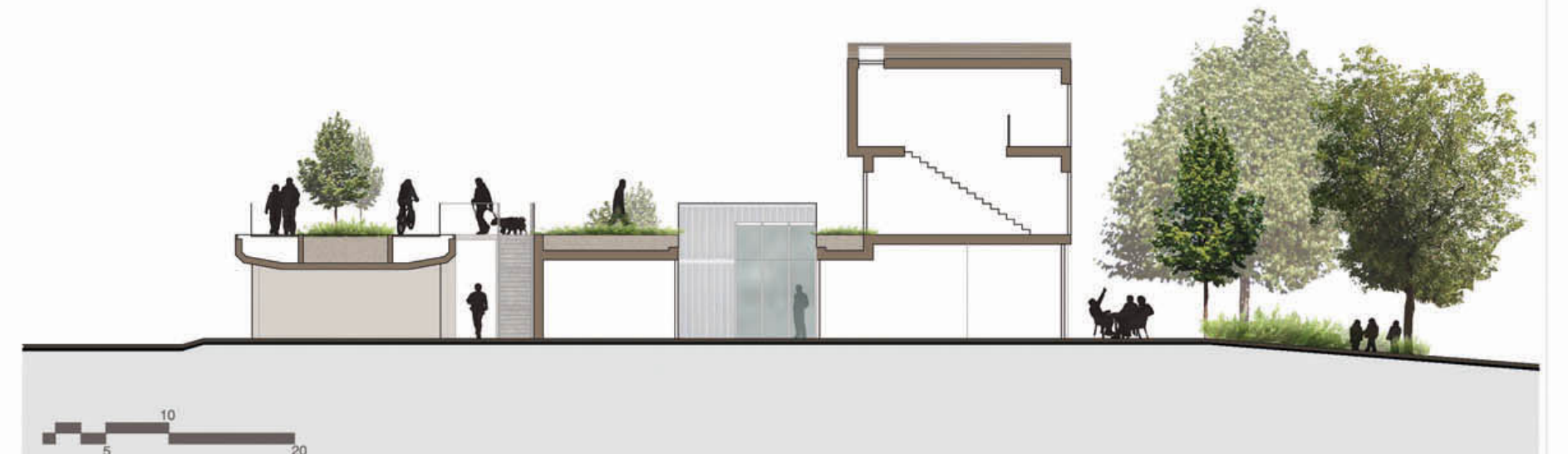
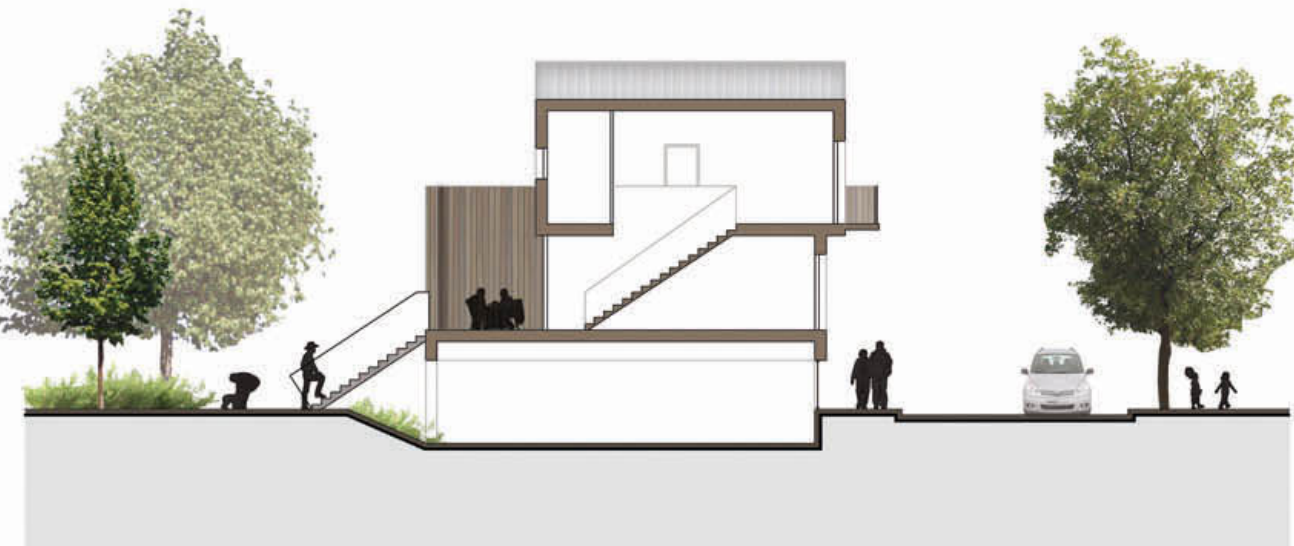
10 units of 80m²
with a patio of 20m²
Through-housing with an entry from the park
and from the alley behind the line of garage



Typology 03

individual housing
cantilevered:

8 units of 86m²
entrance is from the park by a
private staircase



View from the Greenway

