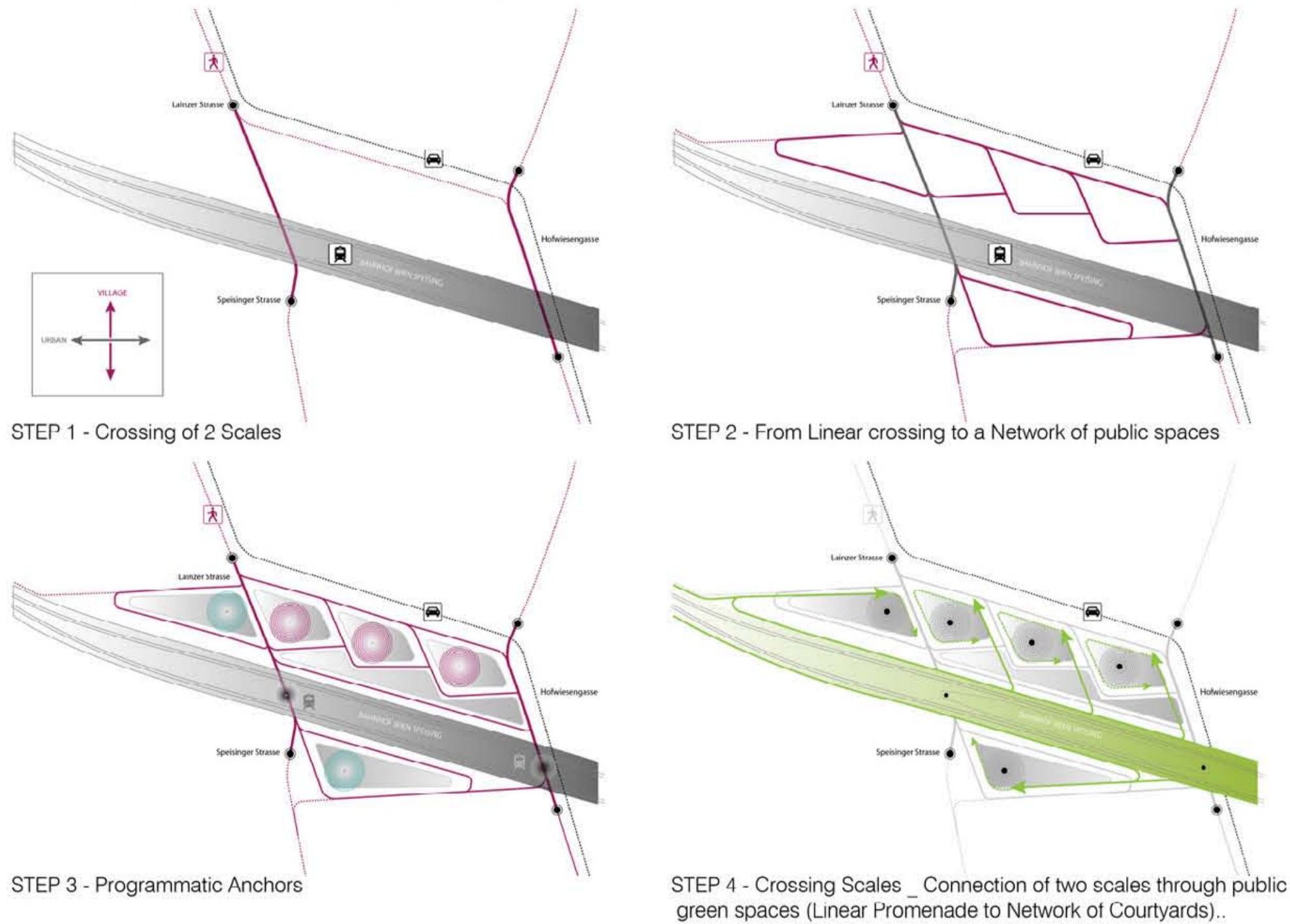
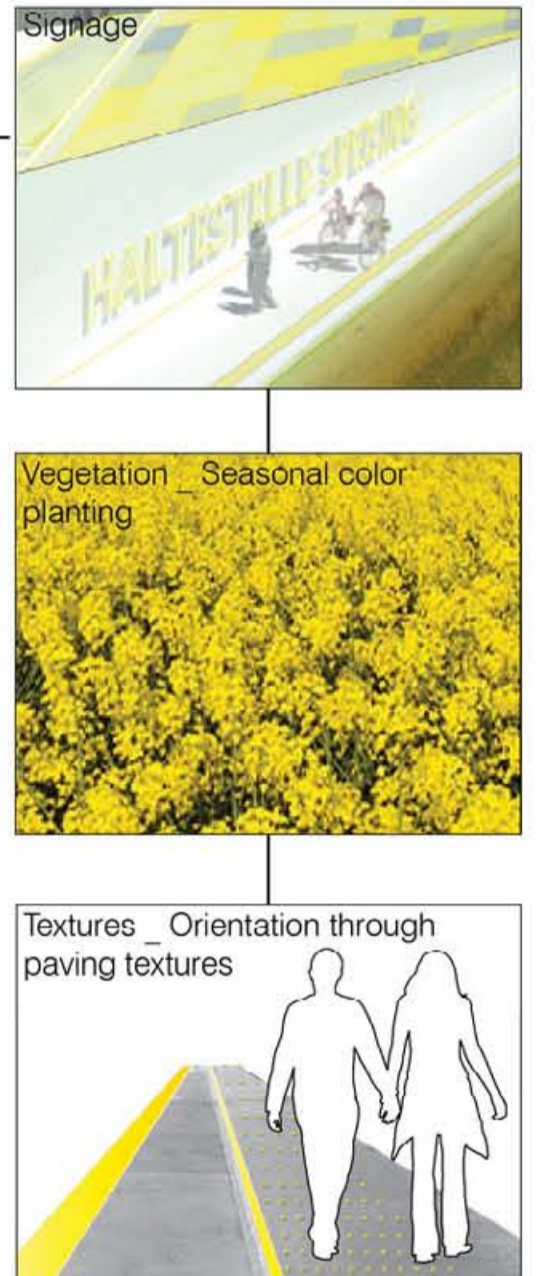
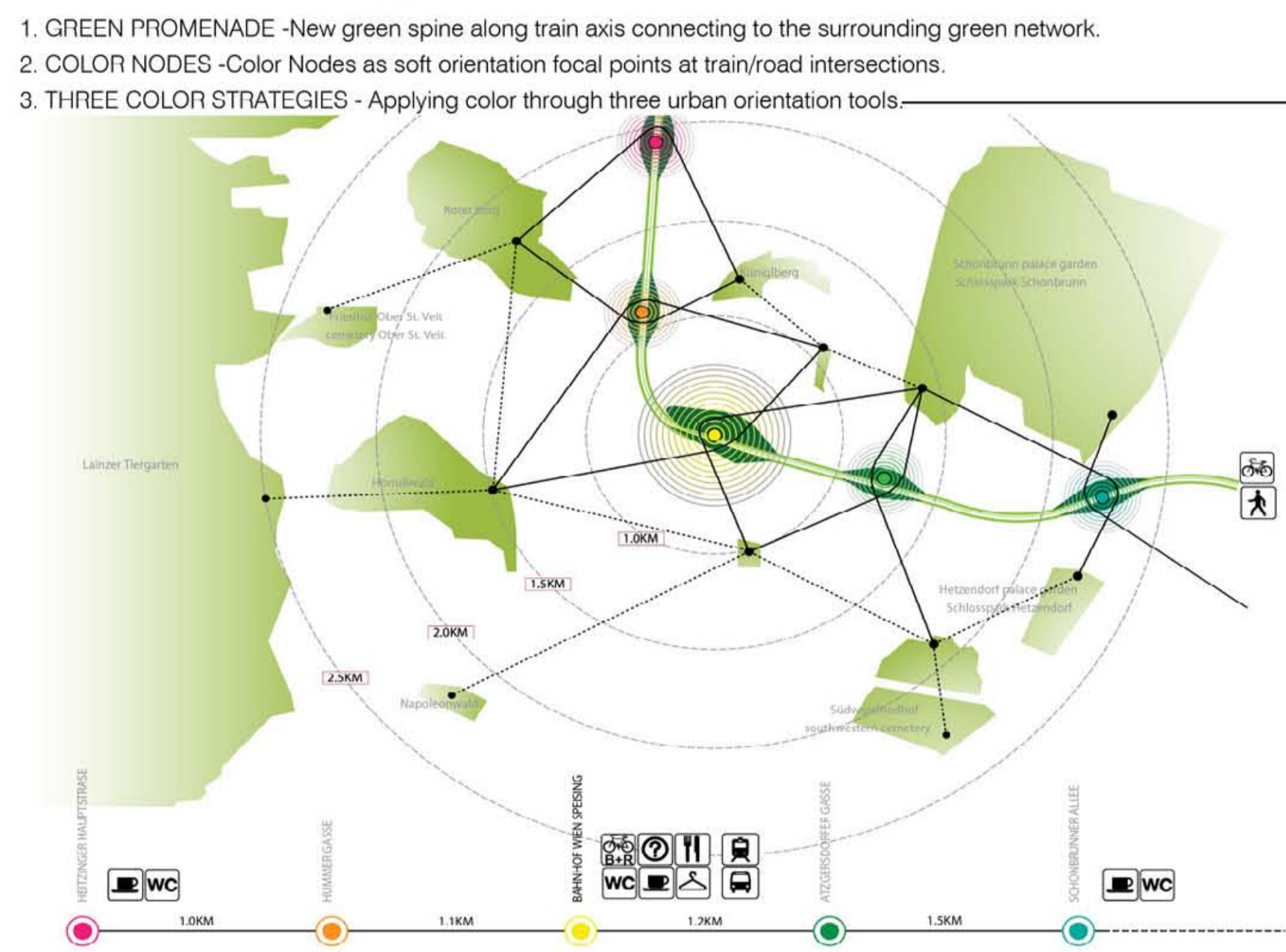


Caught between the daily bustle of Vienna's regional transportation veins and the local green tranquility of Hietzing's recreation parks, The 'Community RoofScapes' envisions a new identity for the site of the Speising train station as a mediator of different scales and rhythms. Utilizing the 'green' character of the area as a crucial ingredient for scale transitions, the project orchestrates a network of open public spaces from sunken courtyards and terraces to an elevated green promenade along the train railway, binding together the regional transportation infrastructure and Hietzing's recreation network.

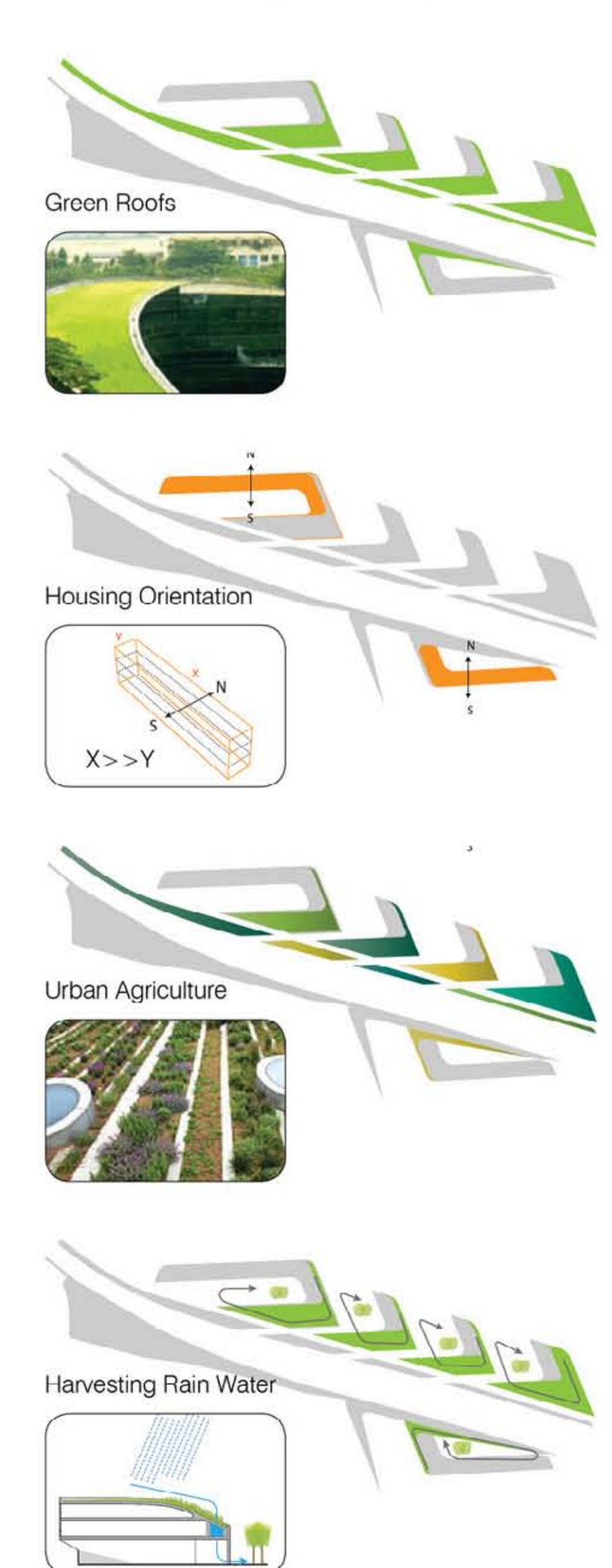
Concept Generation_2 Heights - 2 Scales



Soft Urban Strategy - Color-code Recreation Promenade



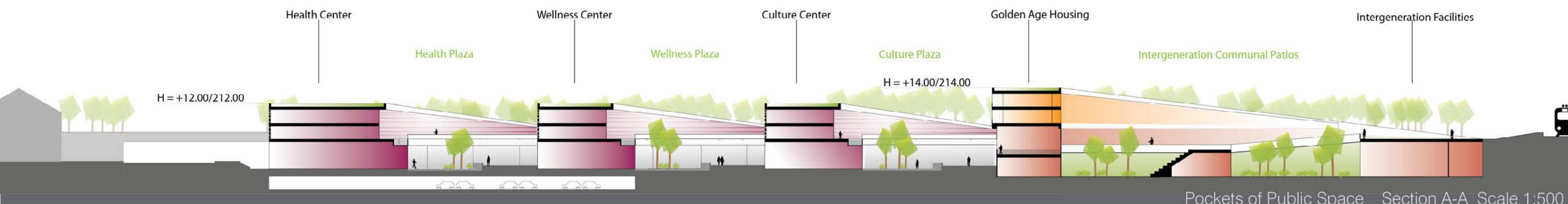
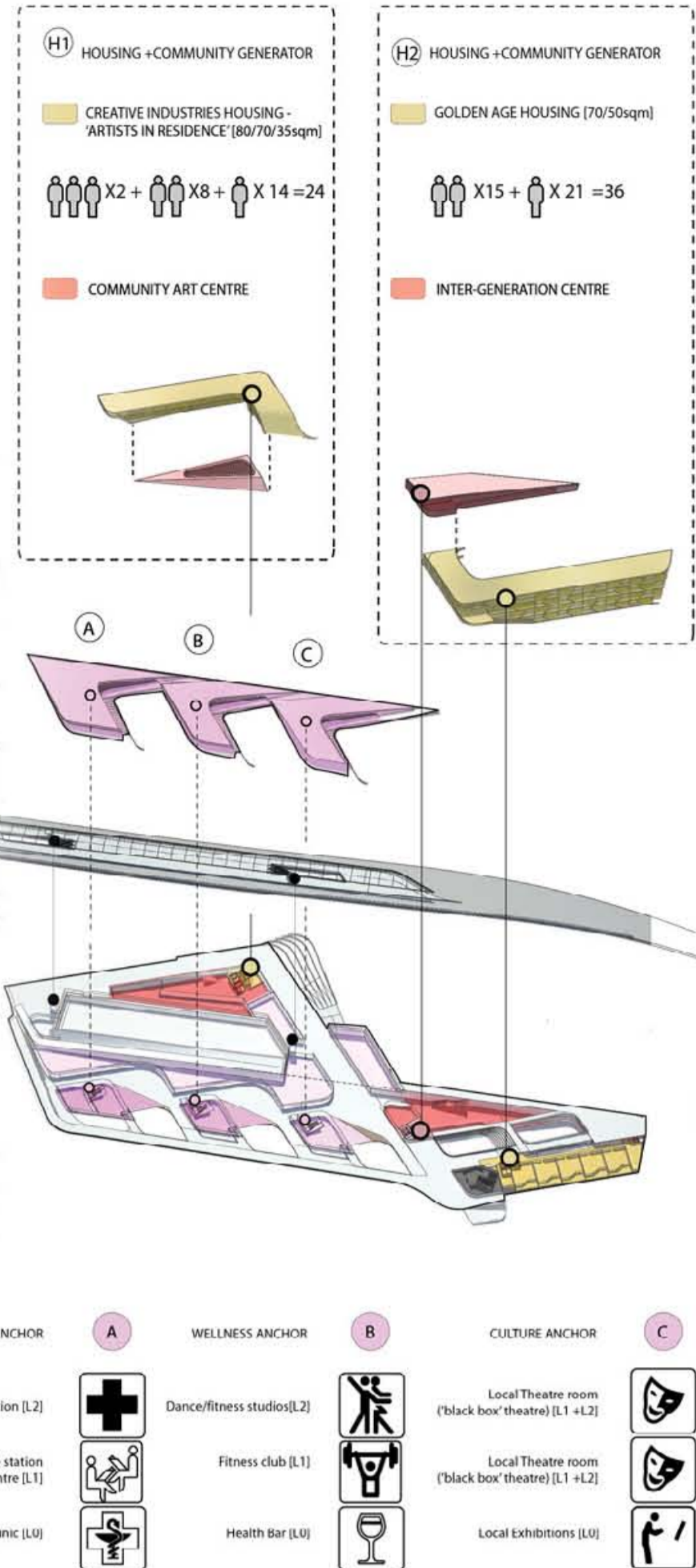
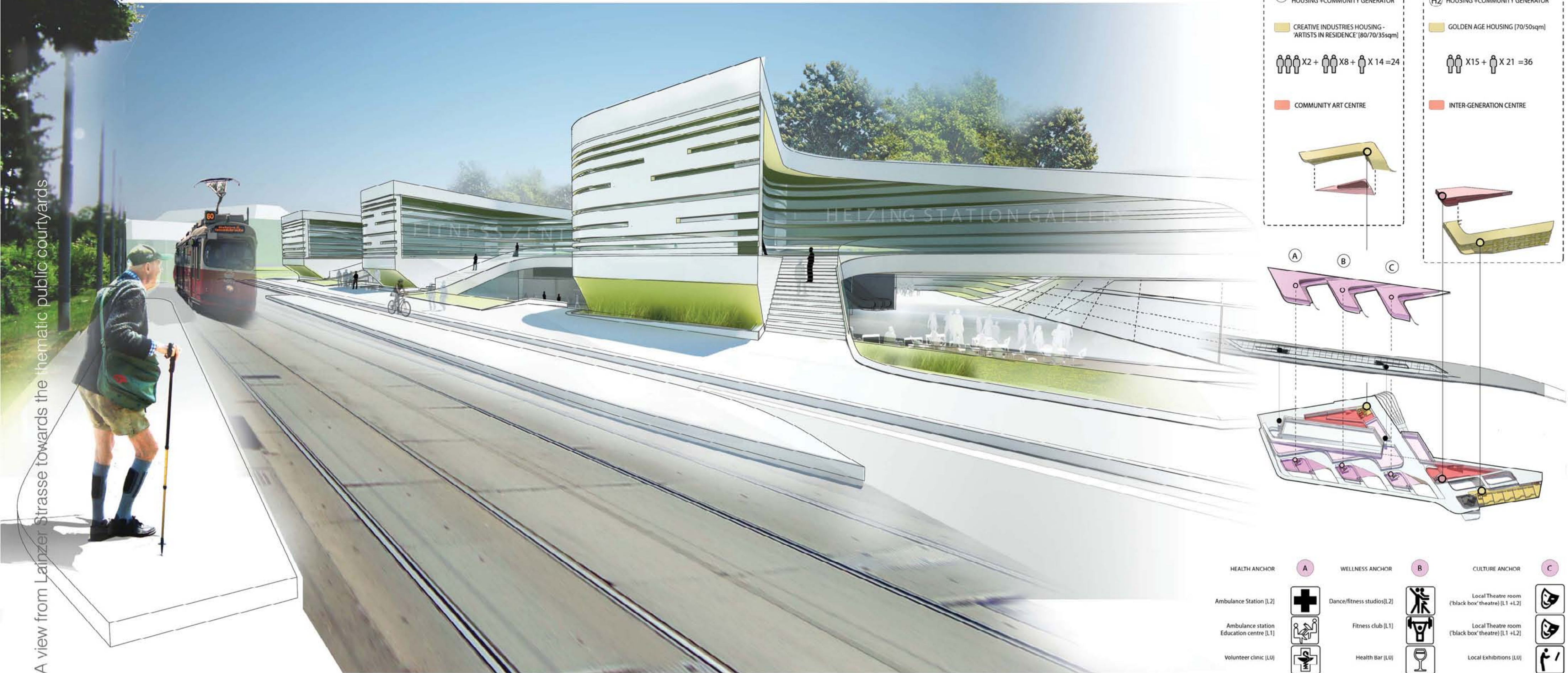
Sustainability Principles



Master Plan Scale 1:1000

The initial demand for a crossing under the train tracks between Lainzer Strasse and Speisinger Strasse is developed through a network of interconnected courtyards. Each courtyard has a specific programmatic theme and atmosphere [culture, wellness & health]. The Courtyards are lower then Street level and shielded from the train railway- allowing for an intimate yet public character.

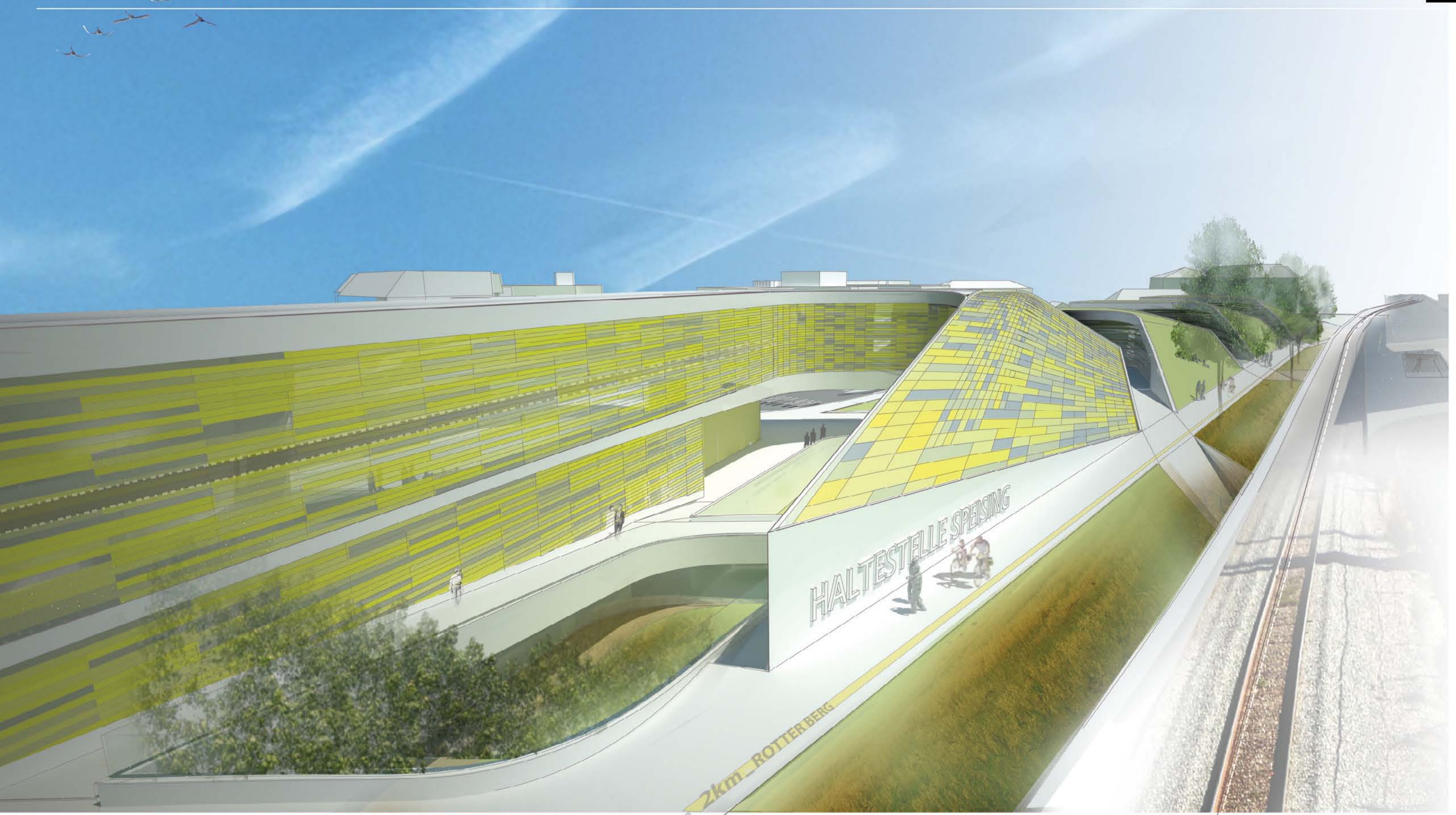
A view from Lainzer Strasse towards the thematic public courtyards



Pockets of Public Space _ Section A-A Scale 1:500

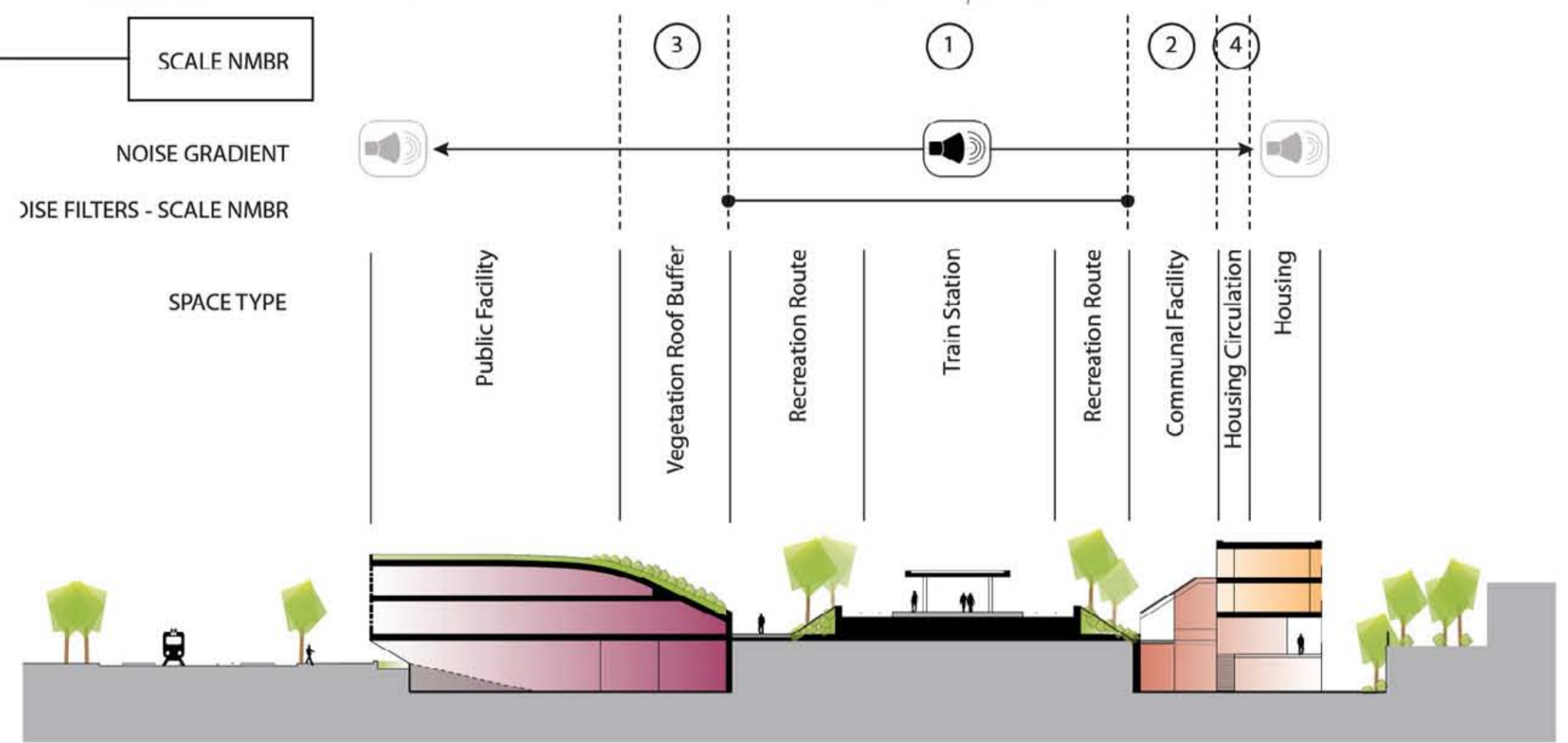


Ground Plan Scale 1:500



Programming Noise Filters

The transition from the local built fabric to the train infrastructural scale is articulated through a system of 'layered' noise diffusers in multiple scales.
 scale 1. urban green promenade
 scale 2. community generators .
 scale 3. green roofs
 scale 4. housing orientation(circulation space as buffer zone).

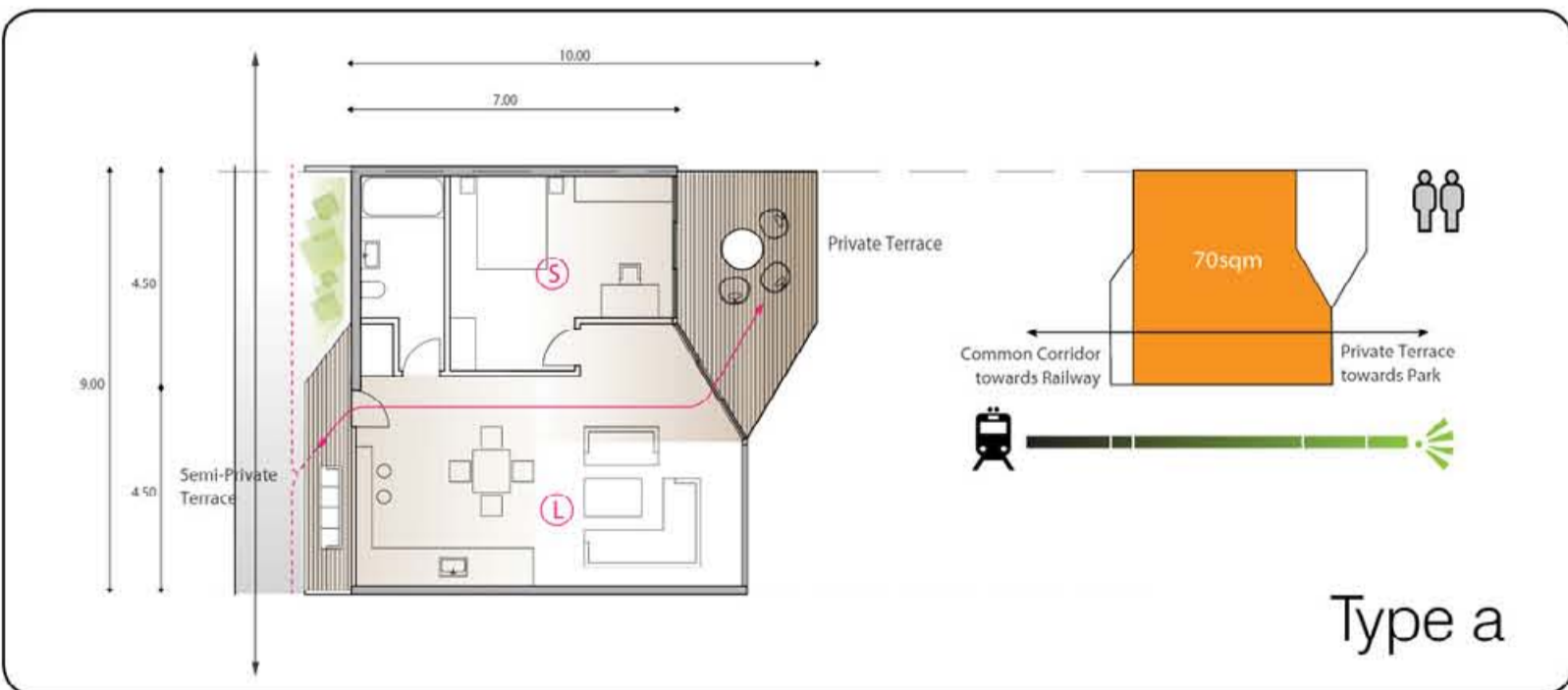
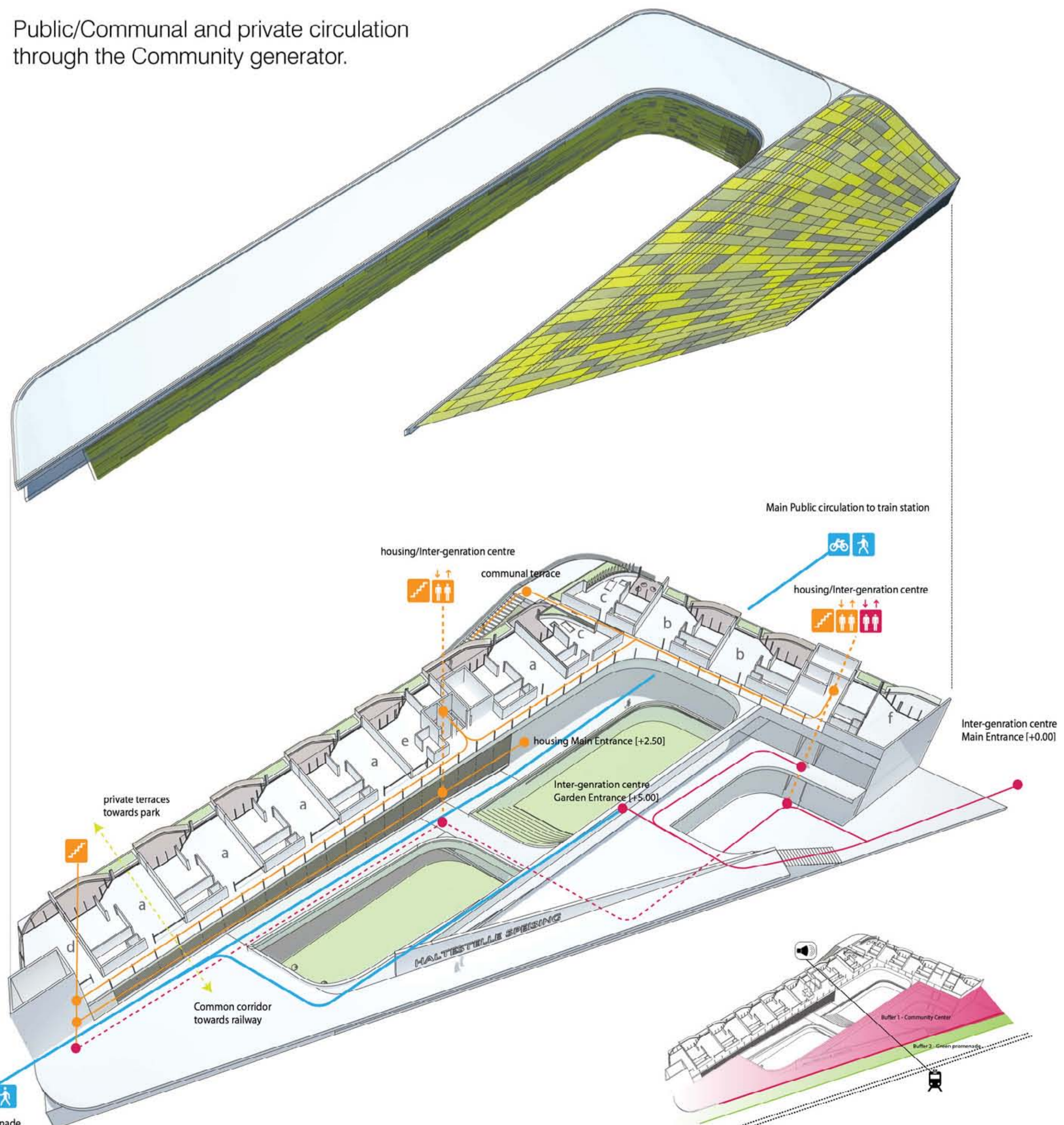


Relating the color palette of the site with the rhythmic tempo of the urban scale

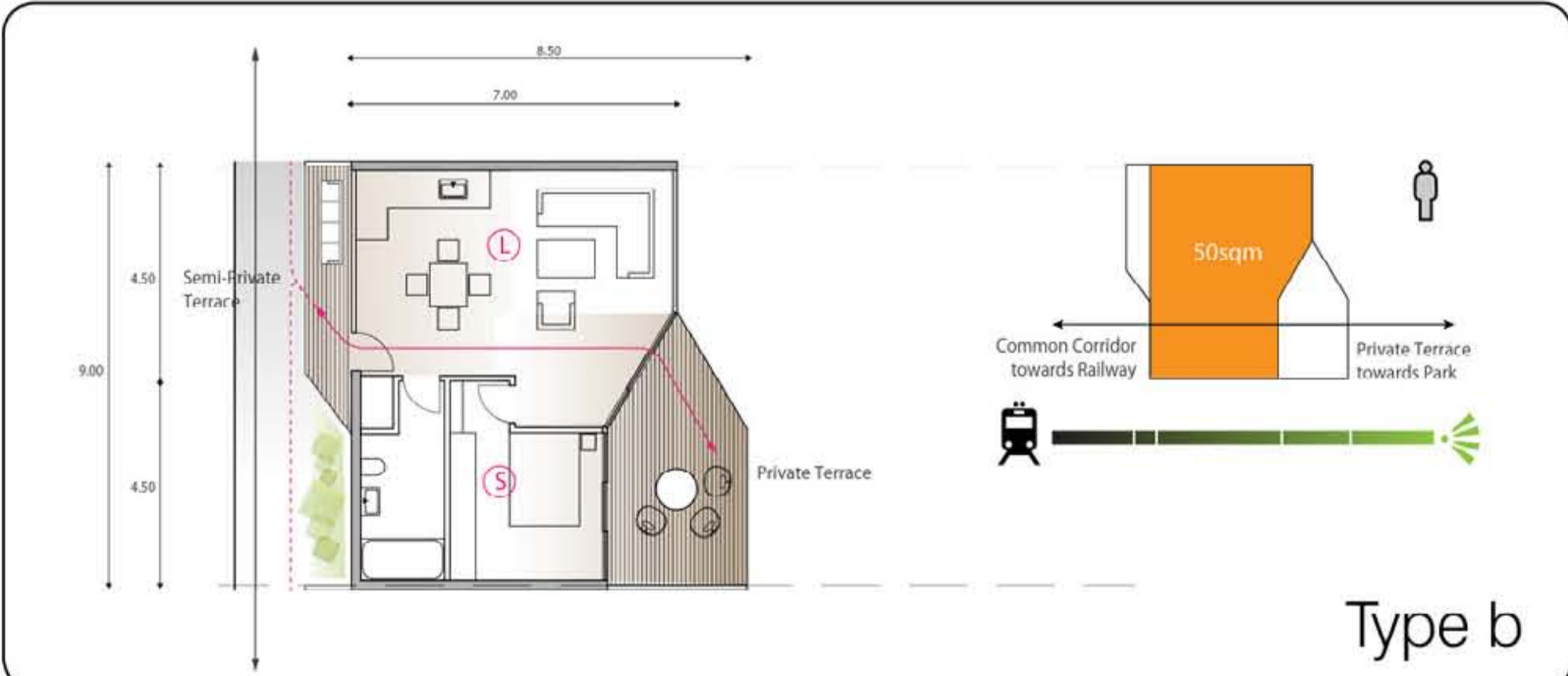
Community Generators -

Infusing community attractors [intergeneration centre] with housing typology [golden age housing] in order to enhance the community growth and social interaction.

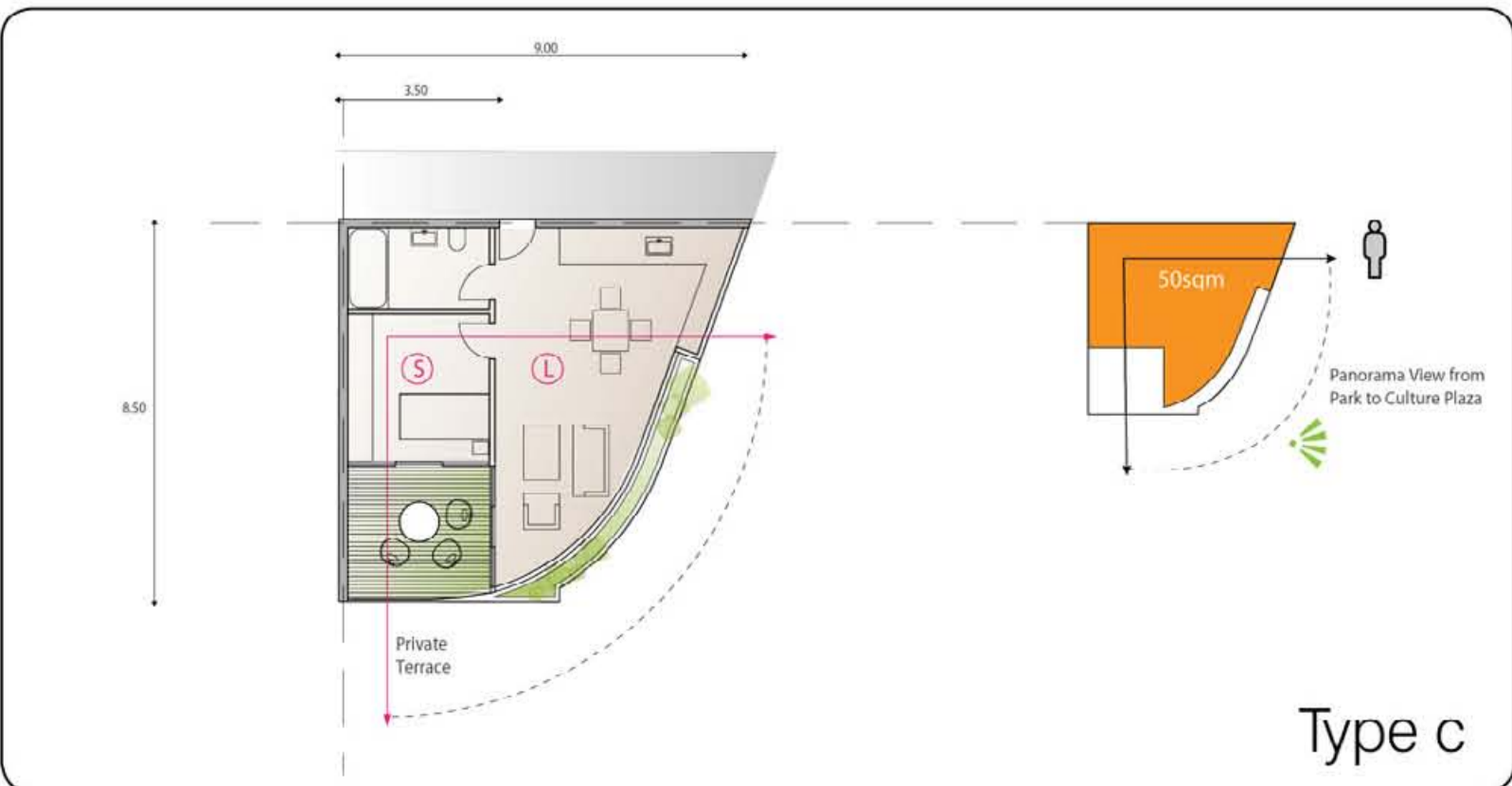
Public/Communal and private circulation through the Community generator.



Type a



Type b



Type c

Golden age housing Typology _ Scale 1:150

Community centre as noise buffer between housing blocks and railway.