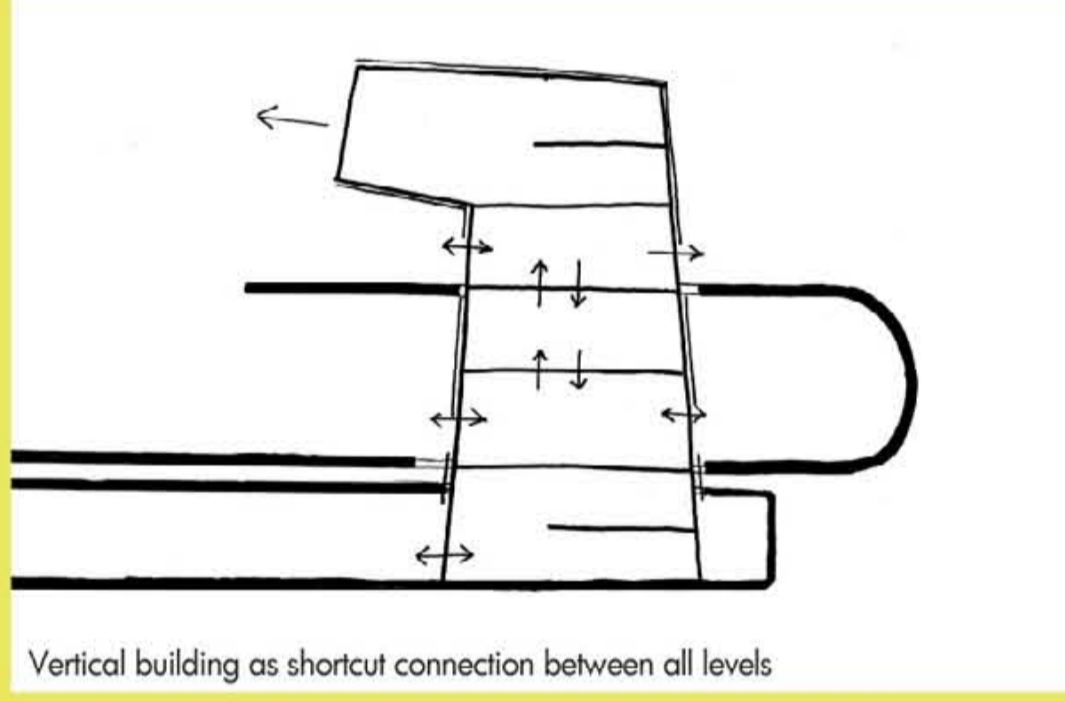


Current view north along Speisinger Street



Vertical building as shortcut connection between all levels



Public transport connector

Hietzing consists of a mixture of very different urban patterns: villas on a hillside, the large structure of the ORF, the finished fabrics of the residential development Lockerwiese or the Geriatric Center, but also the village character which is in parts still remaining along Speisinger Street, that has been developing into a more urban appearance due to its continuous edge towards the street. Stringing together the edges of buildings along the street connects Speisinger Street and Lainzer Street visually and structurally.

The set up and the plans of the different urban patterns have kept their original form, but have been redefined by new uses. Now, the villas originally built for the upper classes, are used by small and medium-sized businesses and inhabited by members of the middle class. Thus, the fabrics of villas and terraced homes have started to converge. The project keeps and enhances the existing continuous edge of Speisinger Street and Lainzer Street since it is a strong feature that forms the urban space. The existing public uses and businesses are kept in place and are complemented with a bicycle shop and a house for all generations. Like this, a range of goods and services are offered to the inhabitants of Hietzing along a primarily pedestrian axis. The urban edge is accentuated at the new microcenter. By restricting traffic and integrating parts of the street into a new three dimensional marketplace the climate for small shops and businesses is improved significantly.

The architectural project has two components: Firstly, a three dimensionally shaped surface serves as a connector. Arrival and departure of public transport happens on this surface which is structured by pedestrian and bicycle paths. The surface links the different levels of the S-Bahn platform and tram and bus stops. Circulation follows the idea of shortcuts. The new urban space is ready for multiple temporary uses: a farmers' market, Christmas market, open air cinema, basketball or beach volleyball tournaments. The permanently installed building between upper and lower part of the surface houses an information exchange, an education consulting center, bike and ride and car sharing points.

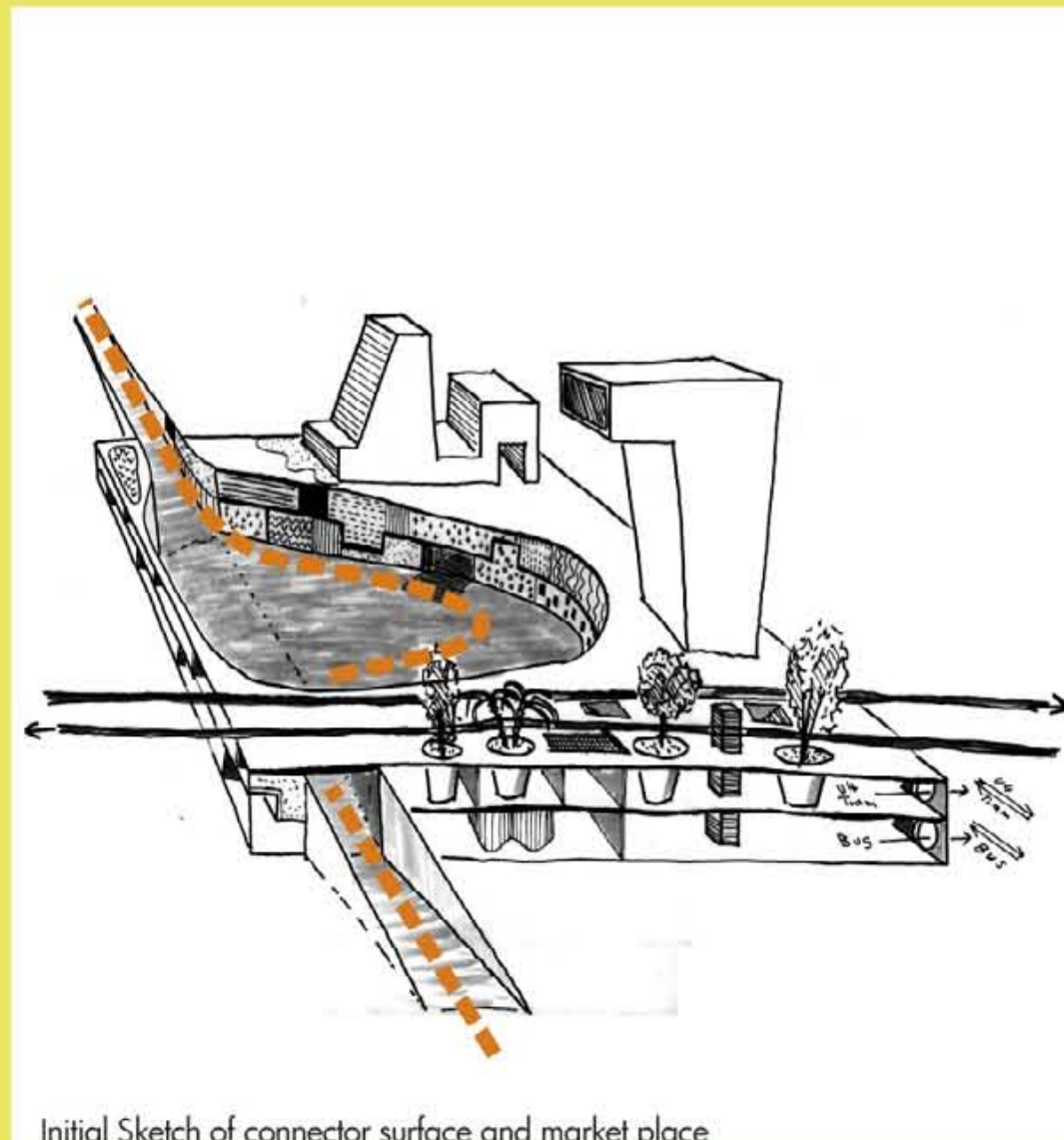
The second component is a small tower connecting upper and lower part of the surface. This tower which also serves as a vertical shortcut between the levels is located at the northeastern end of Speisinger Street. It provides the existing firewall with a face and Speisinger Street with a terminal point which corresponds visually with the opposite edge on Lainzer Street. Functionally, the tower is themed health and fitness for everyone. A multifunctional space for events and open council meetings is located on the top floor.

The new urban spot welcomes people from all directions: inhabitants of Hietzing who run errands on Speisinger and Lainzer Street or visit recreational facilities as well as passengers who change from S-Bahn to bus and tram and vice versa. The new spatial quality invites passengers to stop and stay. Although shortcuts for people in a hurry are

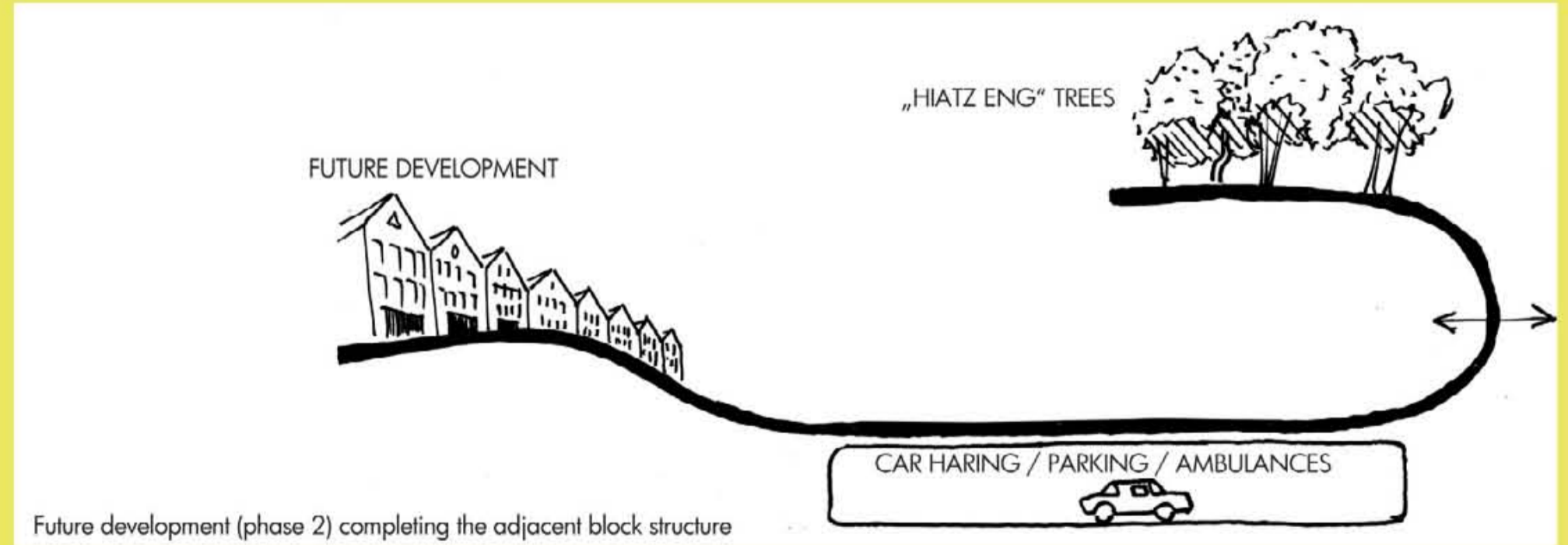
provided, they are lined with functions such that the place acts like a sponge collecting traffic flows and slowing them down deliberately. Existing services are stimulated by specific accents without competing with the adjacent unused spaces. The connection between levels is comfortable and results in interesting spatial configurations and terraces making visible barriers and dead-end streets unnecessary.

The project is an extension of urban space - a continuous surface where inhabitants and guests can move freely. All functions are organized along the circulation flows such that they can be perceived and used in passing by. The surface is „soft“ on the inside, made of wood. The upper side next to the S-Bahn is treated as a green landscape and corresponds to the surrounding green hills.

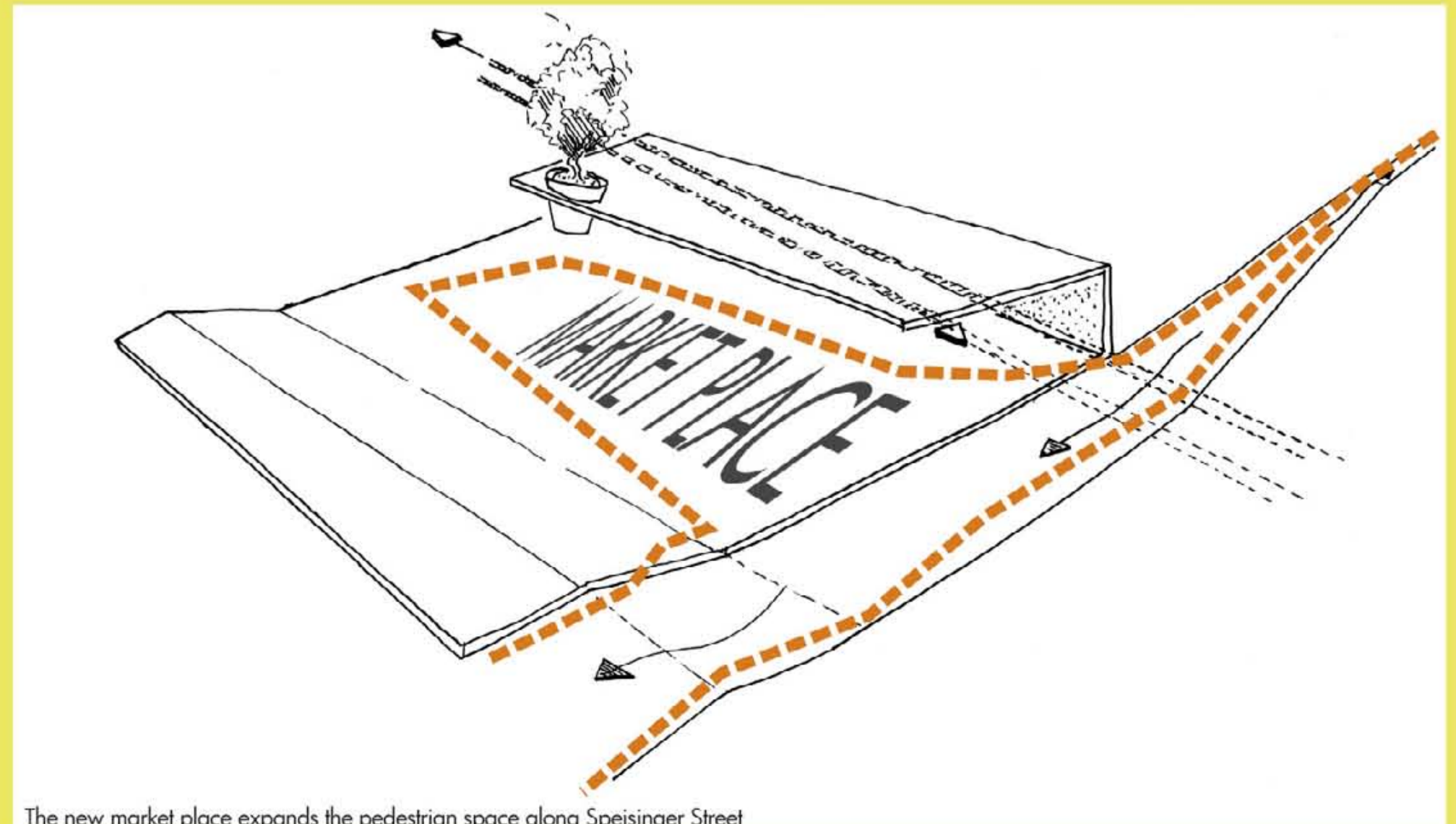
For the future development of the site it is important that the edges of the marketplace are further enhanced. Once the connector surface is accepted and interwoven with the existing fabric, the edge can be defined at the Northern side of Preyergasse. These buildings house small shops and businesses on the ground floor with apartments on top.



Initial Sketch of connector surface and market place



Future development (phase 2) completing the adjacent block structure



The new market place expands the pedestrian space along Speisinger Street



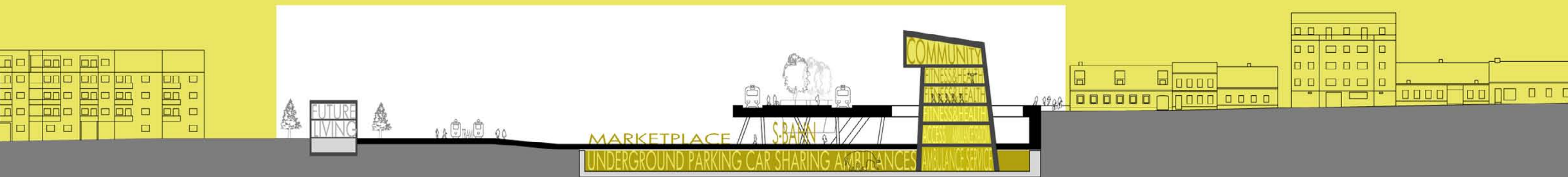
Section 01 1:500



Speisinger Street looking North

Plan Market Place 1:500

Plan Terrace 1:500



Section 02 1:500

