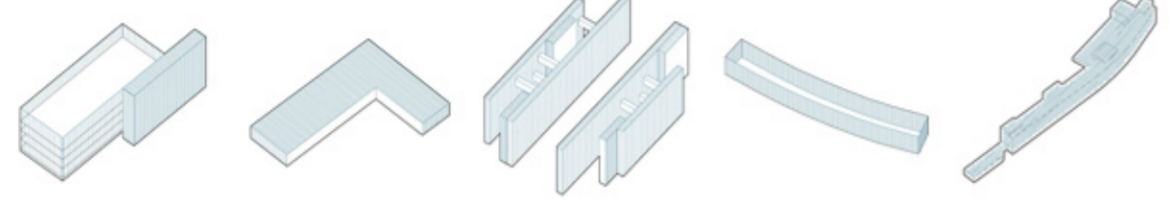


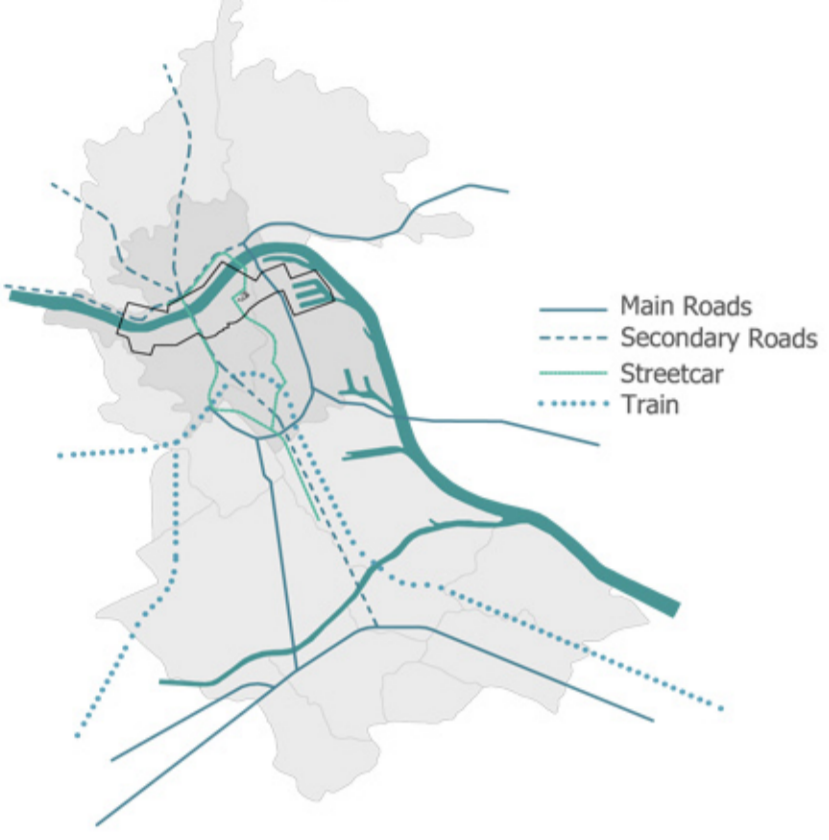
Through the last years, in the different branches of architecture, the interest in the abandoned and disused places has reborned. The debate since the last 80s has been mainly based in landscape, ruins and industrial buildings. This places have been used as experimentation laboratories in order to find new ways to come closer to the architectural project.

**FIVE EASY PIECES** dialogues with a line of particular sights that are focused over the more simply and effective strategies of intervention in the industrial patrimonial culture. Through **FIVE EASY PIECES** we dialogue with de views of other contemporary architects, such as Lacaton&Vasal in the Palais of Tokio, the Lina Bo Bardi's SESC - Pompeia Factory, or the landscape intervention by Peter Latz in Emscher Park. Different ways of intervention about industrial patrimony, different scales of acting and different architectural methods that are based on an specific view. A sight which notices the beauty and possibility of these places.

As in previous examples, through **FIVE EASY PIECES** the Tabakfabrik, erected in Linz by the architects Peter Behrens and Alexander Pope, is intervened in a sensitive way. **FIVE EASY PIECES** is materialized in five simple micro-actions in the scale of a building, that configure a local regeneration method which, on one hand, integrates the area of the existent urban surroundings -through a new programmatic and cultural social frame-, and, on the other hand, gives a meaning to the Tabakfabrik as an identity symbol of the new urban development along the industrial area of the river Danube.



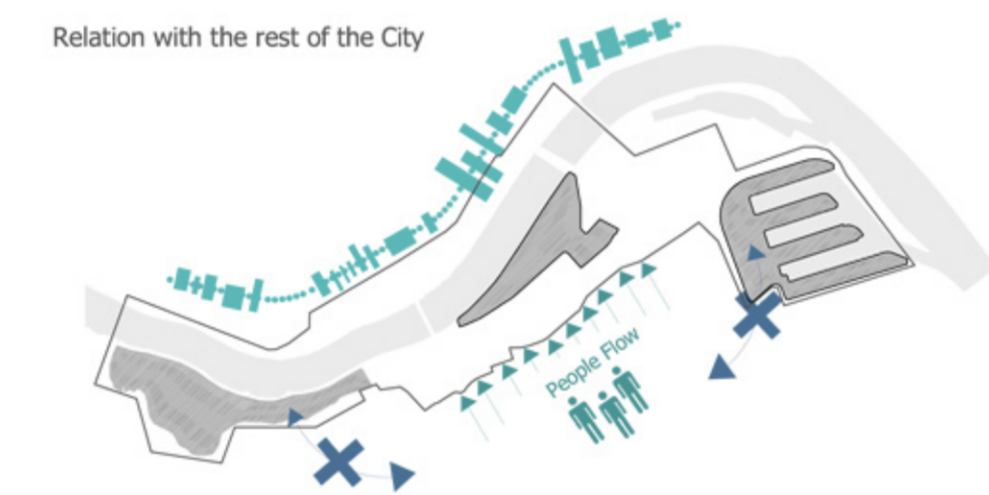
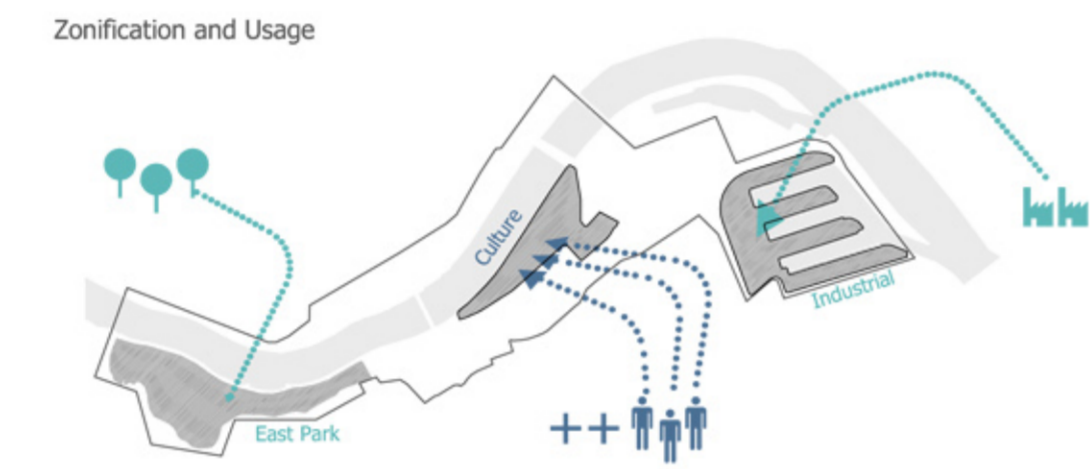
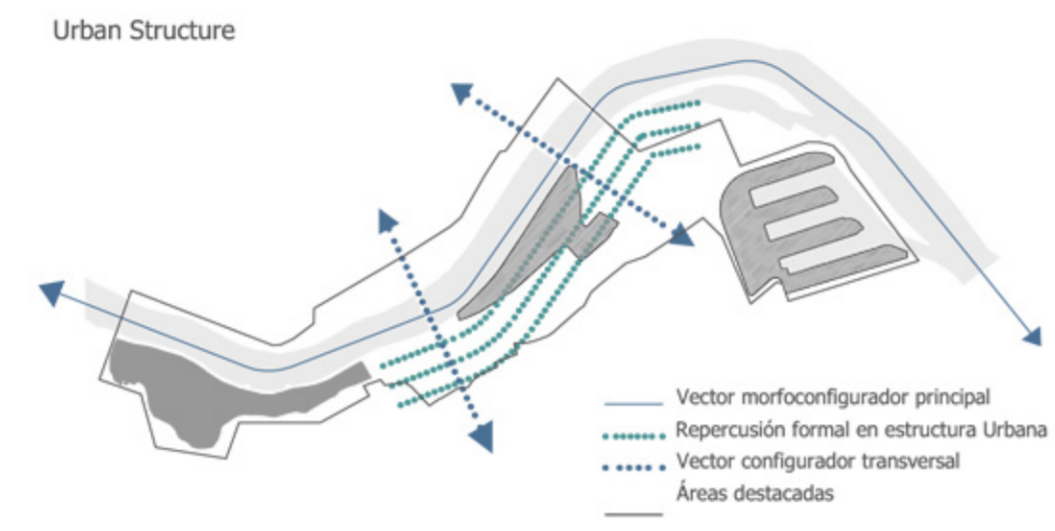
REGIONAL SCALE: Linz as Creative City



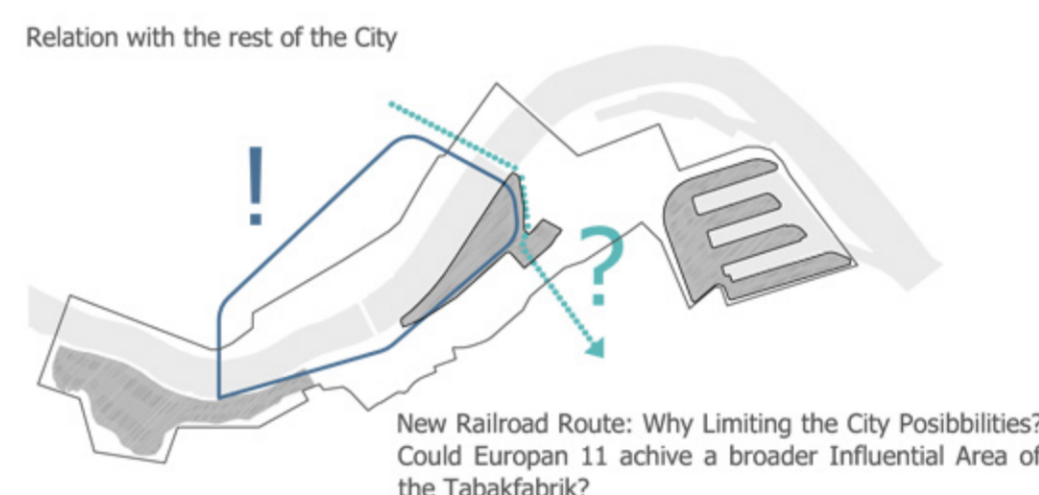
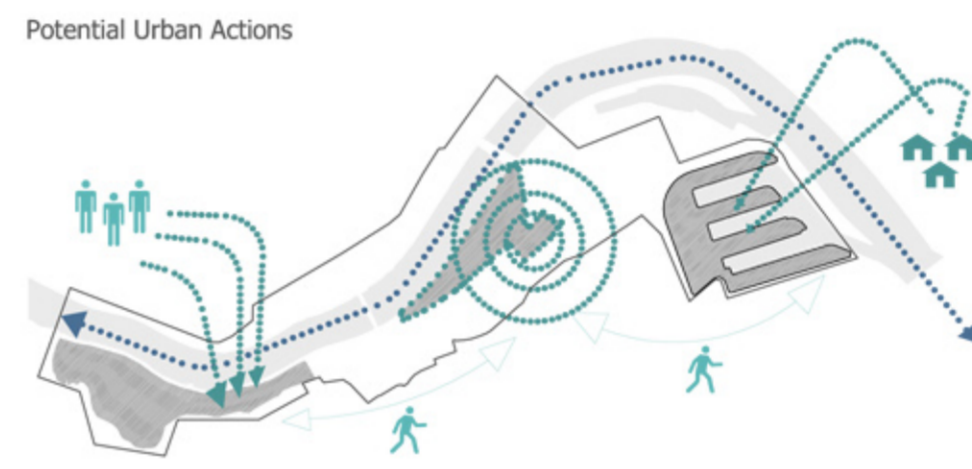
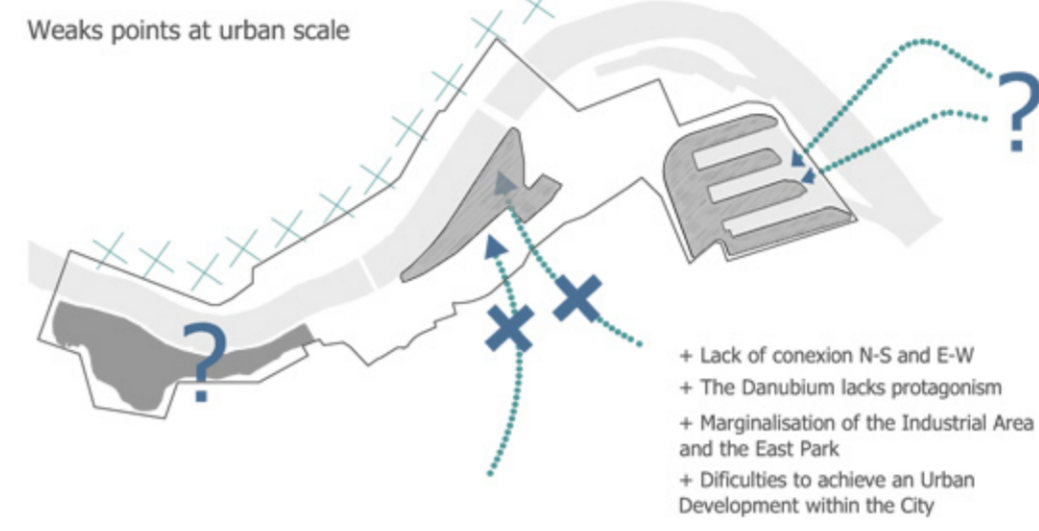
URBAN SCALE: Tabakfabrik as Focus of Urban Development



REPERCUSSION AREA: Analysis



REPERCUSSION AREA: Conclusions



URBAN ACTIONS: Five Easy Areas

**CULTURAL AXIS**  
This one piece means the core of the new urban development that would give Linz an international image as a City that looks into the future with the sensitive and cultural achievement required in European 2011.

**FUTURE URBAN DEVELOPMENT**  
Thought as an urban development kept within the city this piece tries to achieve a sustainable development in the spirits of renewing an historicity industrial architecture with the view on the future.

**CROSSING THE DANUBE: BRIDGE 1**  
The layout of the new Railroad lines require a piece that would help crossing the Danube. Hence, uniting the two river banks of the City and Bringing closer the City and the west Park.

**CROSSING THE DANUBE: BRIDGE 2**  
The proposal looks also into the renovation of a existing bridge, giving it the capacity to support the traffic, the new railroad lines and the soft movility proposed in this European.

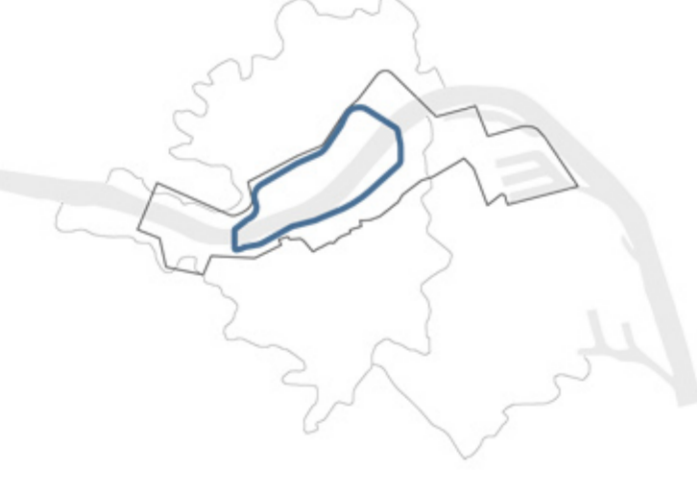
**TABAKFABRIK**  
The central piece of the new Cultural Axis brings to question the architectonic importance of renewing an historic piece of Industrial architecture, bringing to it a new cultural meaning.

NEW RAILROAD LINE: INDUSTRIAL CIRCULAR LINE

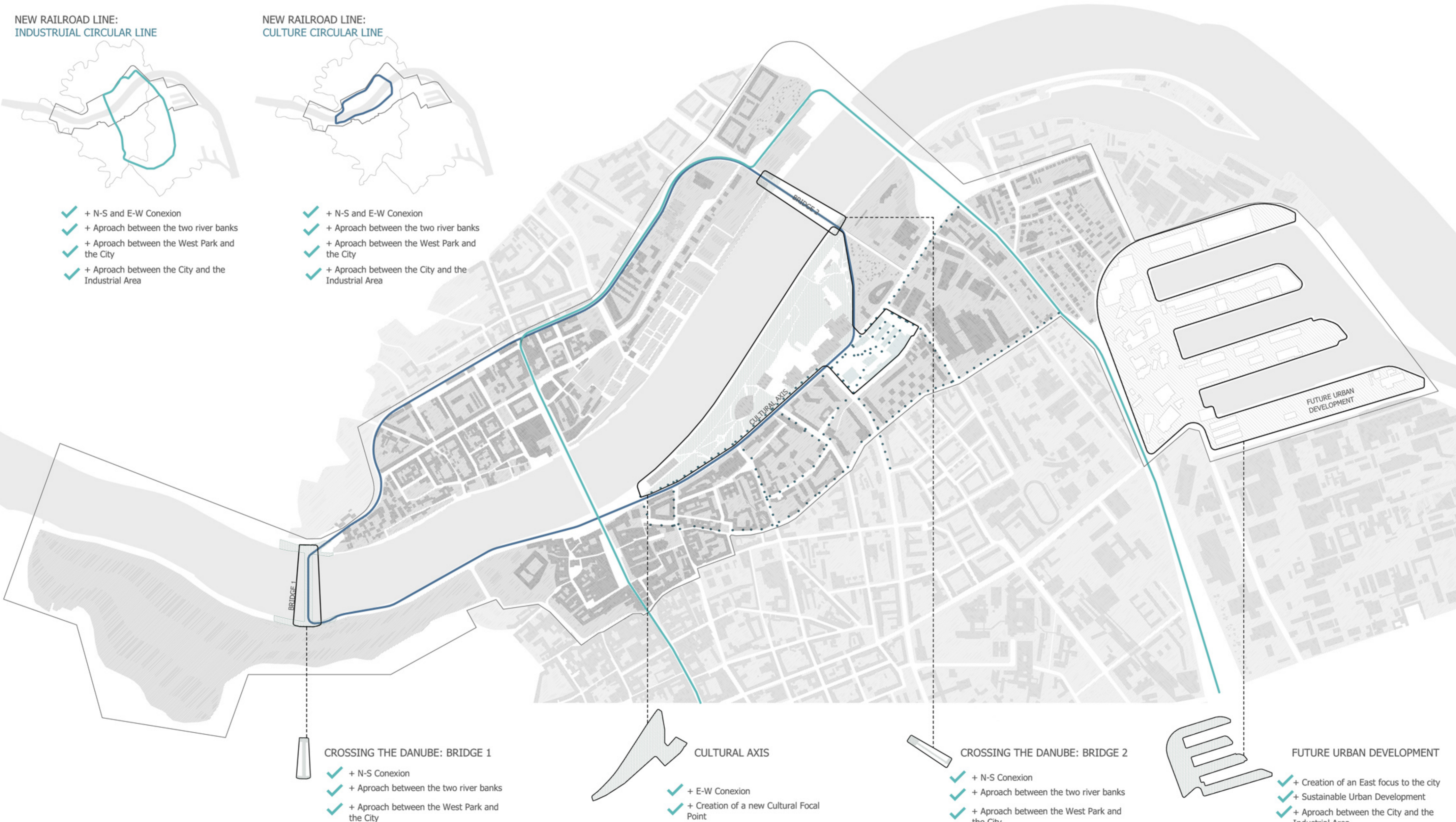


- + N-S and E-W Conexion
- + Approach between the two river banks
- + Approach between the West Park and the City
- + Approach between the City and the Industrial Area

NEW RAILROAD LINE: CULTURE CIRCULAR LINE



- + N-S and E-W Conexion
- + Approach between the two river banks
- + Approach between the West Park and the City
- + Approach between the City and the Industrial Area



- CROSSING THE DANUBE: BRIDGE 1**
- + N-S Conexion
  - + Approach between the two river banks
  - + Approach between the West Park and the City

- CULTURAL AXIS**
- + E-W Conexion
  - + Creation of a new Cultural Focal Point
  - + Approach between the City and the Danube

- CROSSING THE DANUBE: BRIDGE 2**
- + N-S Conexion
  - + Approach between the two river banks
  - + Approach between the West Park and the City

- FUTURE URBAN DEVELOPMENT**
- + Creation of an East focus to the city
  - + Sustainable Urban Development
  - + Approach between the City and the Industrial Area

5 EASY PIECES - 5 LITTLE ACTIONS

The essential aspect of the proposal is the interesting and respectful action over the industrial heritage. In this opportunity, 5 easy pieces are 5 little actions over the Tabakfabrik.

The interest is centred in the re-activate and the re-programmation of this important space in the city. What are the methods of the action in the heritage culture? Previously we said the examples of other important architects, these have an important point of view, the view slowly, simple and radical, one type of view that is loaded of interest and value.

Through 5 EASY PIECES, we make 5 diferents types of action over de memory of the building.

PIECE 1 - P&R - MOBILITY EXCHANGE

The mobility importance and the conection with the other parts of the city is recreated in the new building of the P&R. This dialogs with the elevation of the Donauländestreet. It makes an important reflection about the dislocation and the succession of the volumetry of the old parts of the complex and the new volume.

PIECE 2 - AUDITORIUM CATALYST

The most importan meeting point of the poject is the Auditorium catalyst. It is an important piece in other times, like conferences, concert hall or like one space for the projection. Nowadays, this piece of the complex emerge like an important symbol of the city and with an new skin, we encourage the possibilities of it.



NEEDS

Connection E-W. Opening to the cultural axis

Connection N-S. Opening to the park and Danube

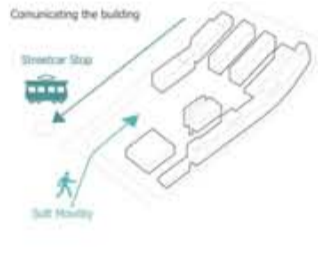
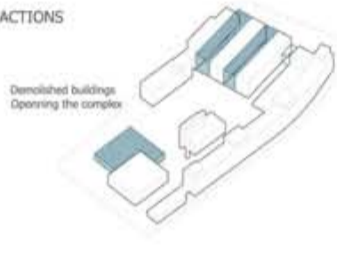
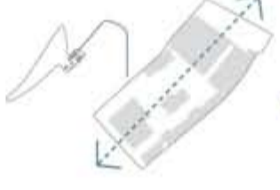
Creation of a new urban icon

ACTIONS

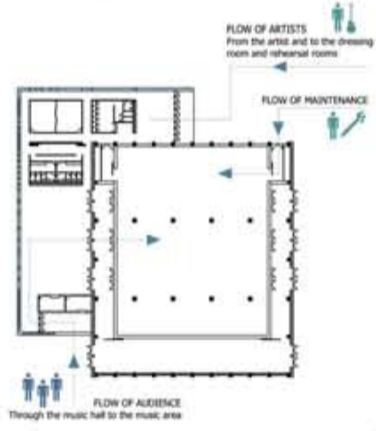
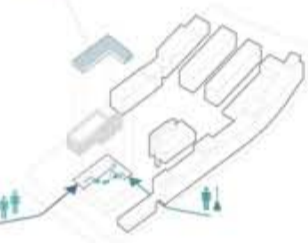
Demolished buildings  
Opening the complex

Communicating the building

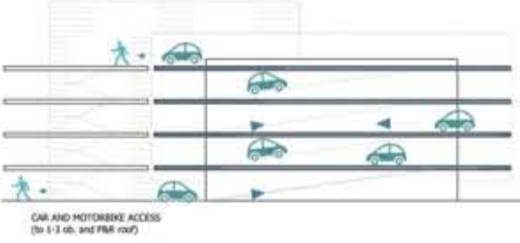
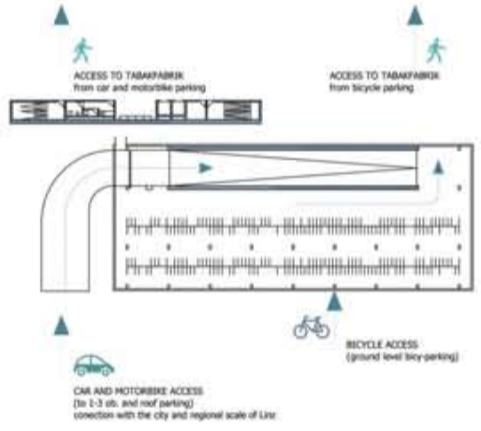
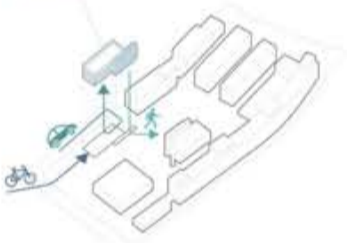
FIVE EASY PIECES



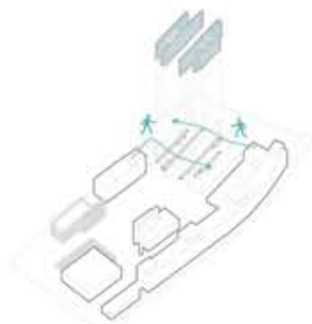
PIECE 2: Auditorium Catalyst



PIECE 1: P&R - Mobility Exchange

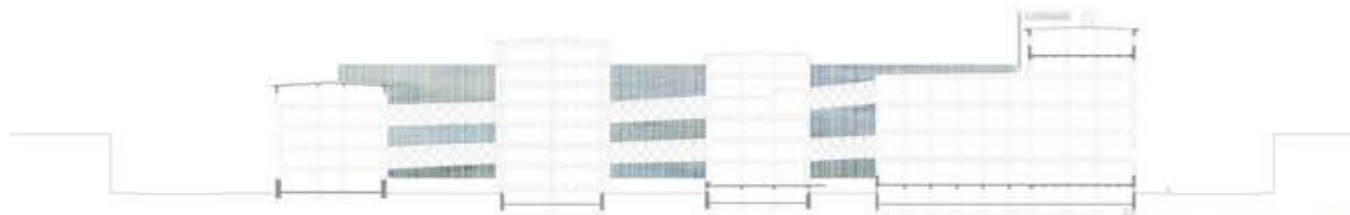
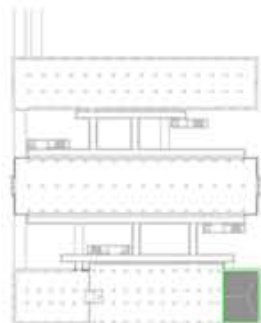


PIECE 3: Magazines Connectors



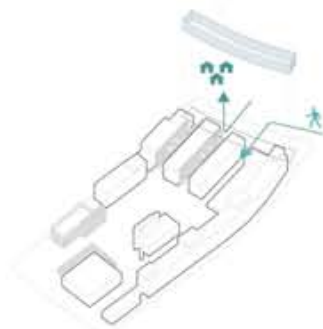
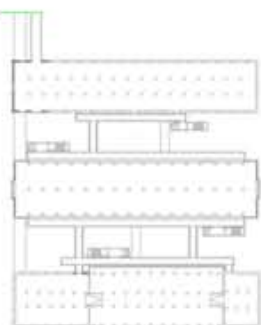
PIECE 3 - MAGAZINE CONNECTORS

After the radical proposal of the demolish the newer buildings between the magazines, we thinking that could be possible give an new symbolic skin that represented the mobility and connectivity of the complex, between the different parts of the complex and the different possibilities areas of the city. Bridges and elevators form a new special space inside the Tabakfabrik. An special area that dialogs between the new and the old of the this industrial icon.



Piece 3 Crossed Section 1/500

PIECE 4: Students Residence & Artists Dwellings



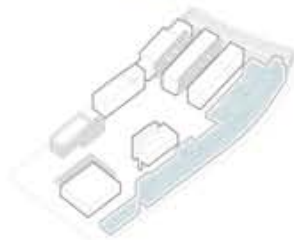
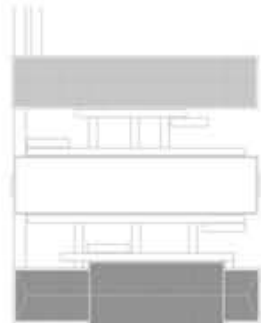
General Dwellings Plan 1/500

PIECE 4 - COLLECTIVE HOUSING FOR STUDENTS AND TEACHERS' HOUSES.

This intervention over the Tabakfabrik is focused in the potential for generate an scenario for work and investigate about the new limits of the visual cultures. To achieve ante-programation for the complex is interest the realization of a new social ambient for the culture. Thought the experimentation of new models of housing, we created an complex dialog between the private space and the work-space -individual laborationes and collectives scenes for investigation-

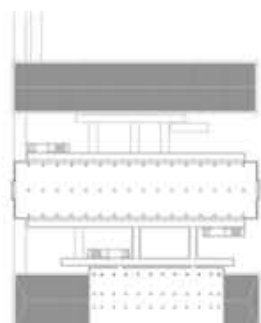


PIECE 5: Occupation Systems

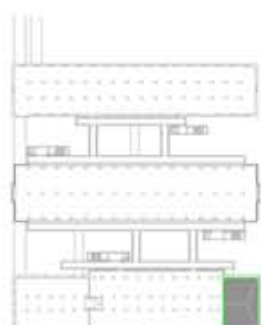


PIEZA 5 - THE SYSTEMS OF OCCUPATION

At finally, the systems of occupation in the Tabakfabrik have to generate differents scenarios for multiples possibilities. We have created four systems for use and layout of the common-spaces. The cube, the linear snake, the wood wall and the mobile partition, though these examples we configures the dialog between the superposition of the different social needs and the autoculture generated inside the new frame of the Tabakfabrik.



Mobile Sistem 1/500



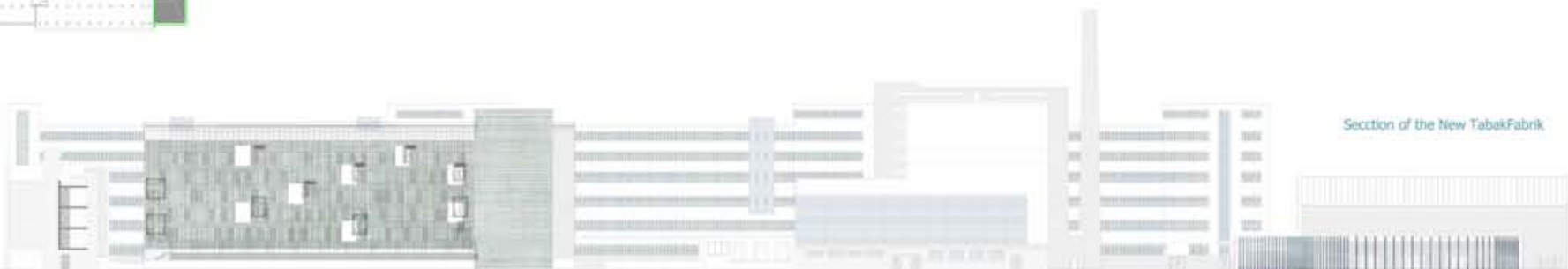
Mobile Sistem



Cubes



Snakes



Section of the New TabakFabrik