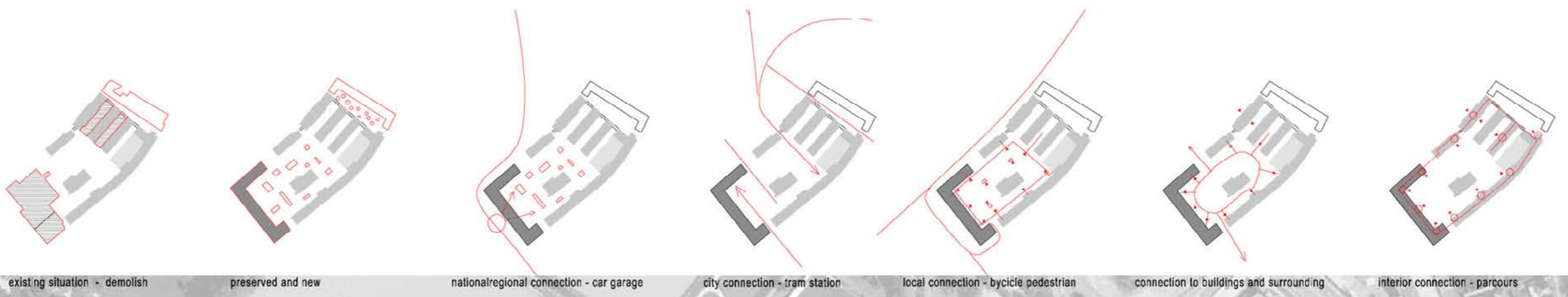


'urban carpet' connectivity

regional context 1:50000



urban context 1:2000

MP 845 LINZ



2 new main elements are implemented on the site:
 - a 3 dimensional carpet that serves as a new attractor and center of the site
 - a new building completing the block appearance.

the urban carpet serves as a first tool to transform the site of the former tobacco factory to create the condition for a different use and life in the future. the urban carpet is not just the center of the site but also of central position of the city with the historical city center, the danube with its natural park, several museums and the concert hall. the close position to the highway A7 calls for intensity of use and traffic flow and proximity to regional areas. high diversity of use is being expected.
 the carpet integrates various functions and elements. it serves as a square, a garden, a market place, a playground, links to the new underground tram station, to the parking garage and to the surrounding buildings and close urban fabric. it is the main element of restructuring and redefining the existing structure.

the new building along the Gruberstraße closes the gap of the block and refines the historical factory buildings of Behrens and Popp.

history
 the historical identity of the factory site is important for the manifestation of the future. the character of the block in the structure of the city reaches to the beginnings of the factory which is found on former river arms. Behrens and Popp reorganized the factory to its circumstantial demands for the production industry of cigarettes and cigars. They proposed several buildings along the perimeter of the block with different heights and lengths being connected by bridges and lower buildings so that the scale of the exterior facades seemed broken. Each of the buildings was for different purposes. Just the factory building number 1 served as a backbone through its length. The buildings on the western side of the block were not realized and instead some additional 1 or 2 storey high factory buildings were constructed in the 80's. The positioning and the height of these buildings destroy the character of the block. The site has no identity on the western side. the goal is to give an own identity to the quarter.

use
 each building has its own opportunities of use by having very specific characteristics. Therefore each can be used in a different way. Just by the conditions the program of use will be very diverse attracting a broad variety of public and private interests. the new building on the corner with a strong presence to the city center could be used for public interest. it houses a library, parts of the arts university which could extend its facilities from the Hauptplatz to the tobacco factory creating strong dynamics between these 2 sites. the buildings positioned in the interior of the block and the Ludiggasse in the south could be occupied with more private functions for private users and middle or small scale enterprises. The buildings along the boulevard (Unter Donaulände) house a design shop and the administration building of the quarter. new uses of the existing fabric will be very softly implemented without destroying the generous spatial existence. in the factory number 1 small light weight elements are implemented serving as gardens and kitchens etc. they organize the large continuous space into different zones that can be occupied for various purposes serving as meeting zones, atelier zones, living rooms, working zones, etc. the former magazine buildings number 2 and 3 substand larger remodelations. the openings of the facades will be enlarged and the interior structure will be modified according the uses of a hotel, loft houses and a kindergarden. the appearance of magazine number 3 along the Unter Donaulände will be maintained. The horizontal narrow light slits allow few uses in terms of illumination. the proposed design shop is an opportunity for meeting between public and what is being produced in the ateliers. the cigar production building number 3 situated along the Unter Donaulände serves for the administration and organization of the quarter and houses workshops and ateliers.

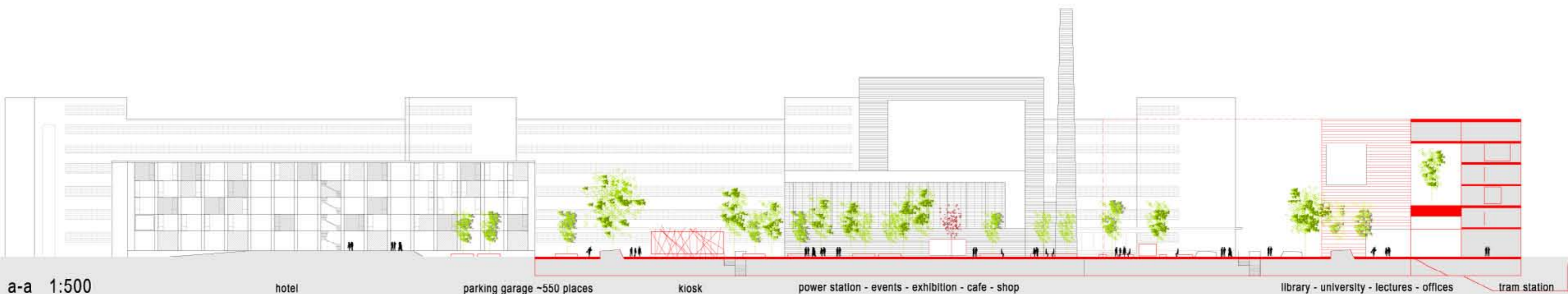
parcours
 the existing buildings are all linked by bridges which represent the production process in a linear manner from the times of factory production. linearity of production is not expected in the future. instead diversity and integration by the different users linking in networks. the parcours integrates the new building as well and links all the users of the building with each others. Besides the carpet the parcours is the second linking element of the quarter.

uses
 the first step will be: the destruction of the buildings along the Gruberstraße of the 80's and the additional magazines of '69 in between the magazines 1 to 3. after the archeological process of exposing the historical structure of Behrens and Popp the carpet is being implemented. It serves as a starting point for future developments. Afterwards a competition for the public building is being. by opening up the site to the exterior interests and wishes of the citizens of linz how to possibly use the existing factory buildings will be proposed. the public starts interfering in the discussion of use for the future according to their demands. the administration of the quarter organizes these interests and wishes. The buildings will be equipped with the necessary infrastructures for the various uses.

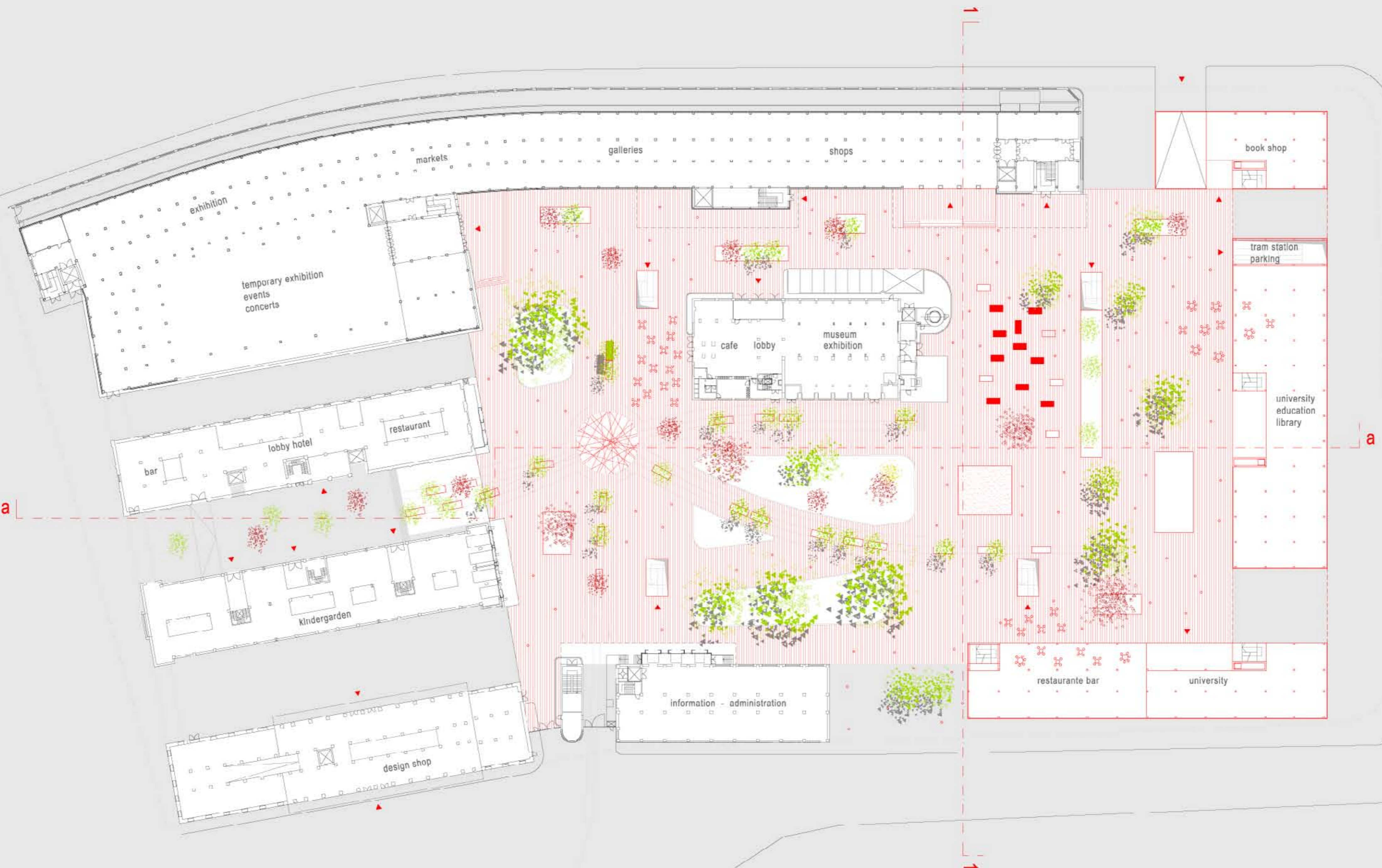
administration
 the administration is the organizing institution fulfilling this text and images of the urban carpet proposal in their hands as a first tool of possible future occupation of the tobacco factory LINZ.



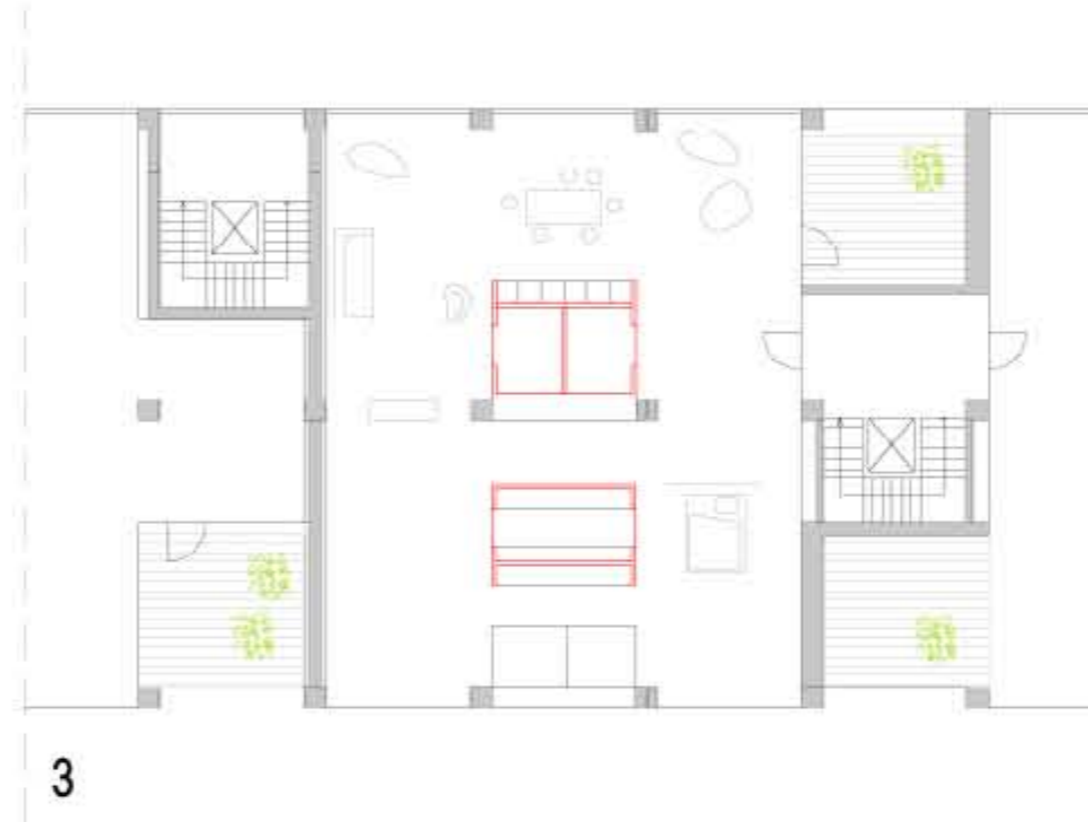
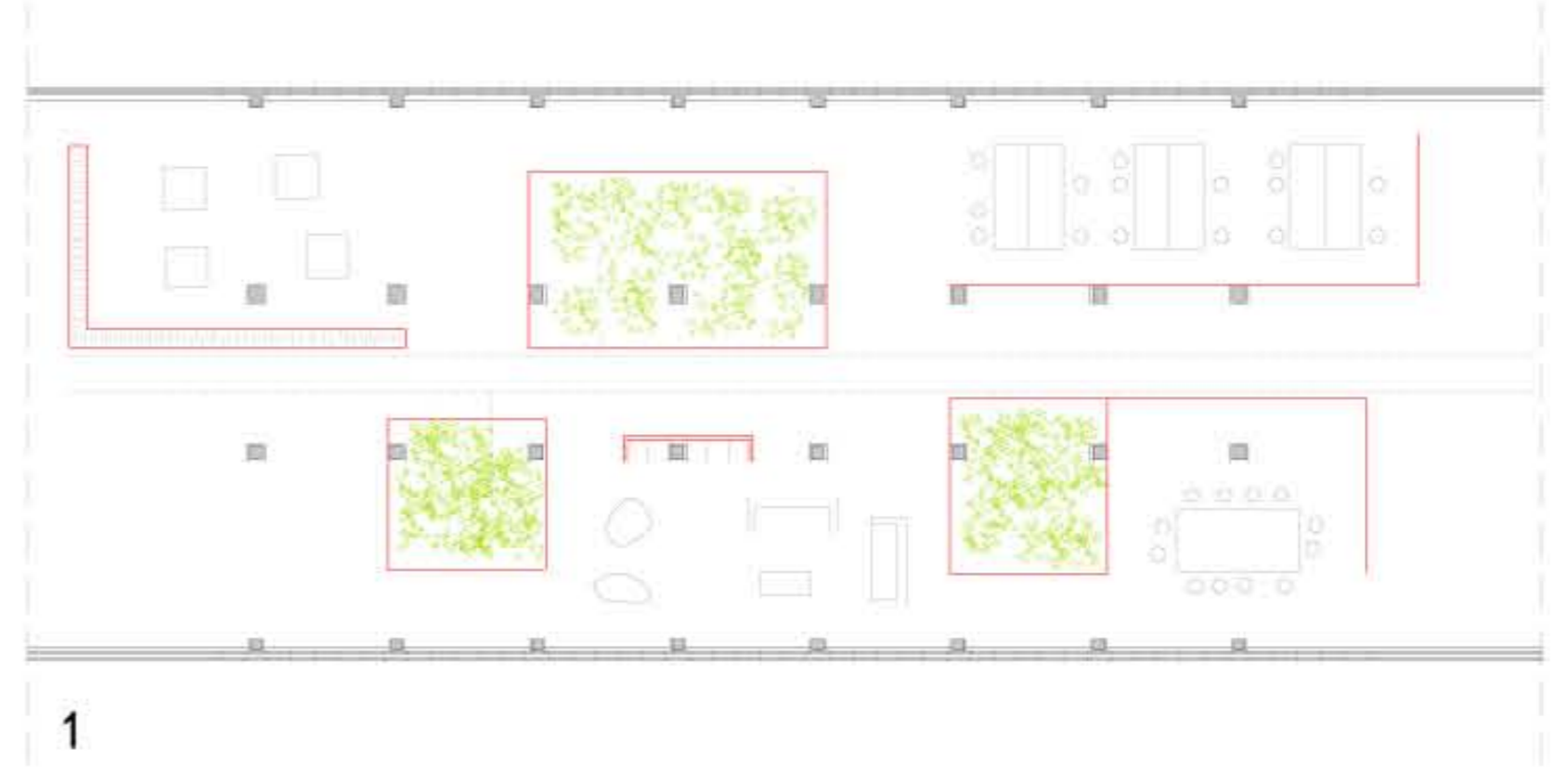
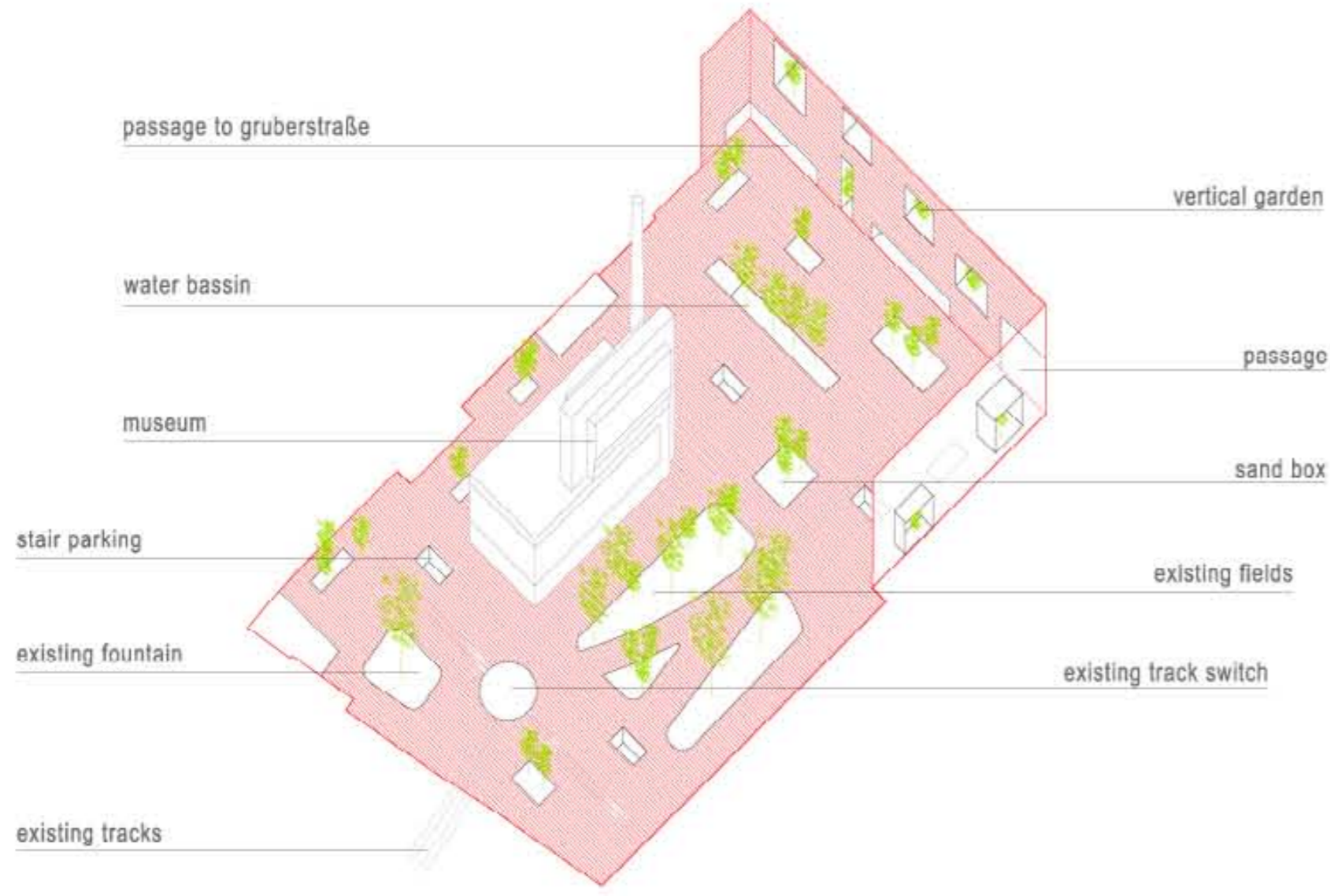
'urban carpet' public space



a-a 1:500 hotel parking garage ~550 places kiosk power station - events - exhibition - cafe - shop library - university - lectures - offices tram station



groundfloor 1:500



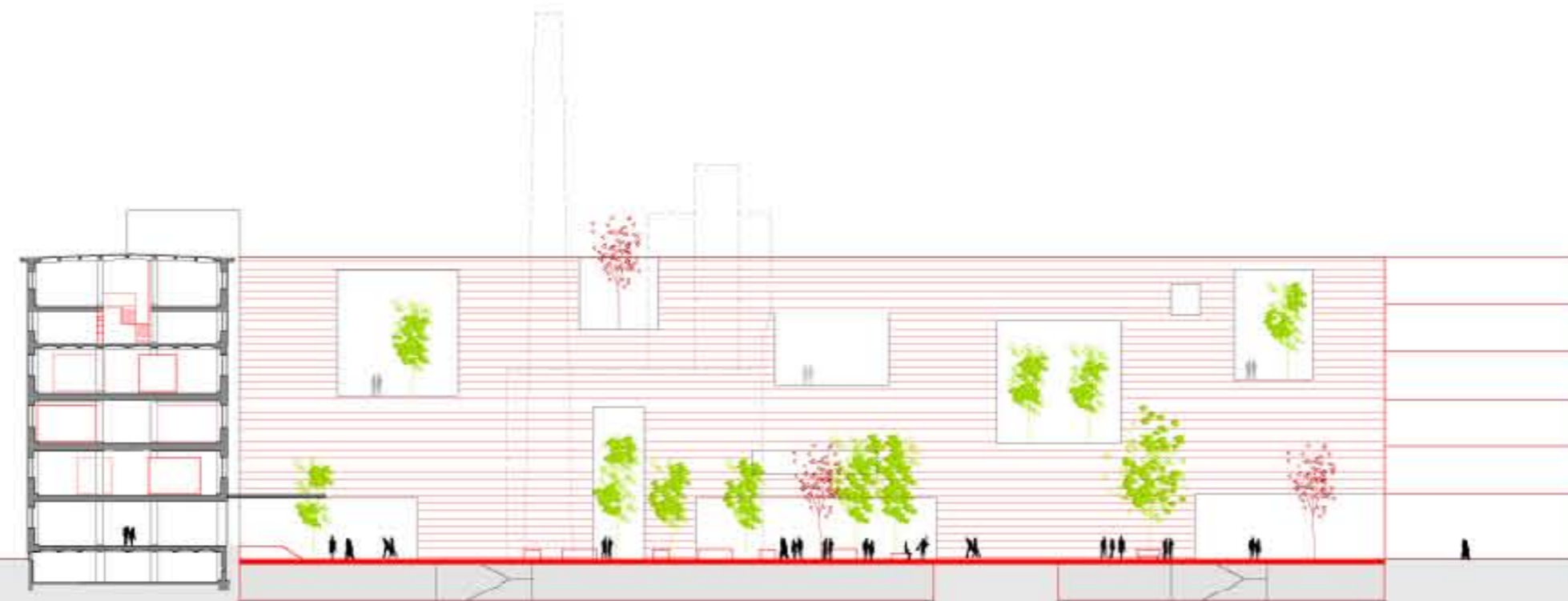
'urban carpet' parcours

zoom 1:200

1-1 1:500

'living in the park'

ludlgasse

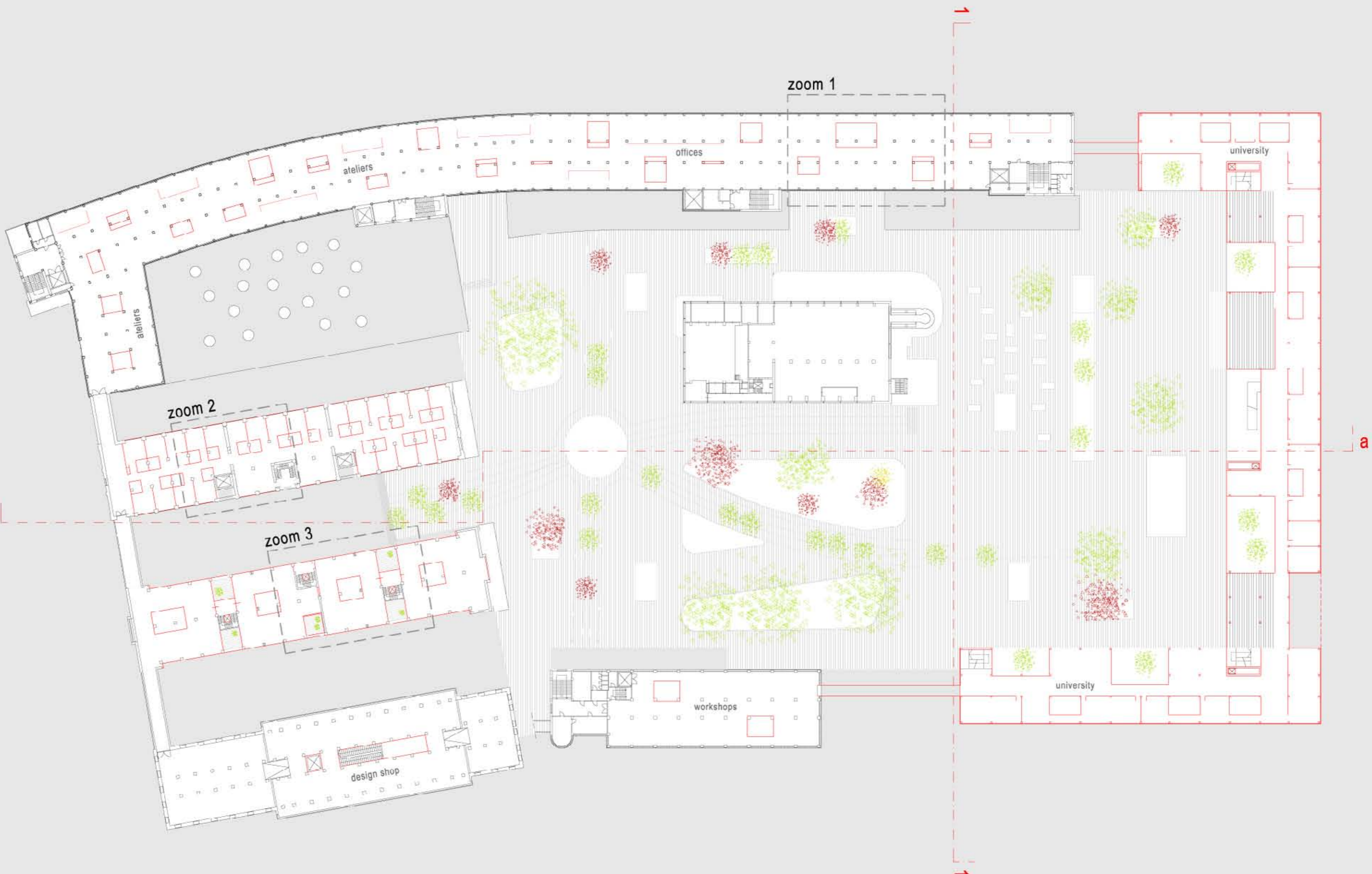


city carpet

parking garage ~550 places

untere donaulände

swimming pool ice-skating hall



1st floor 1:500

