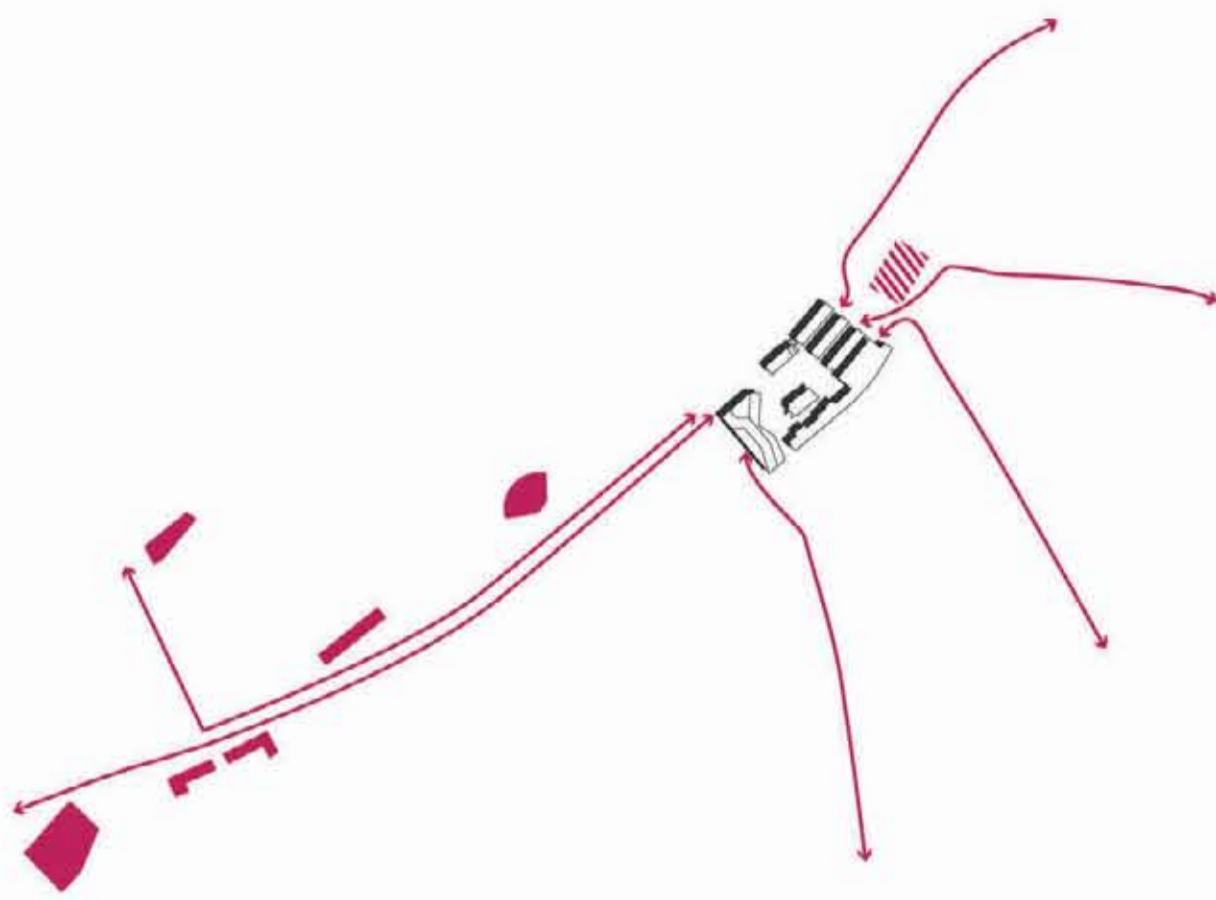
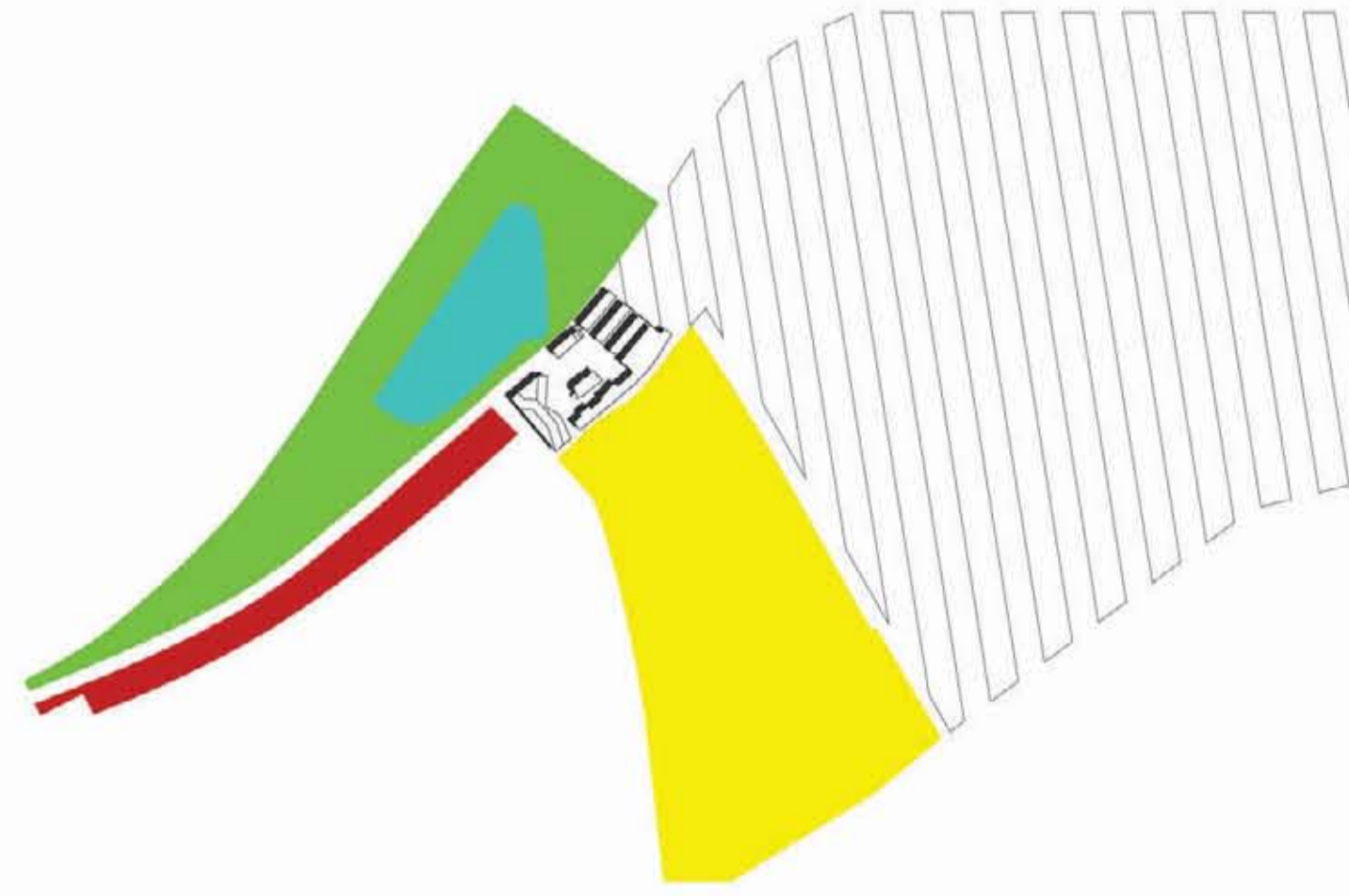


pensierofabrik
URBAN FLOWS

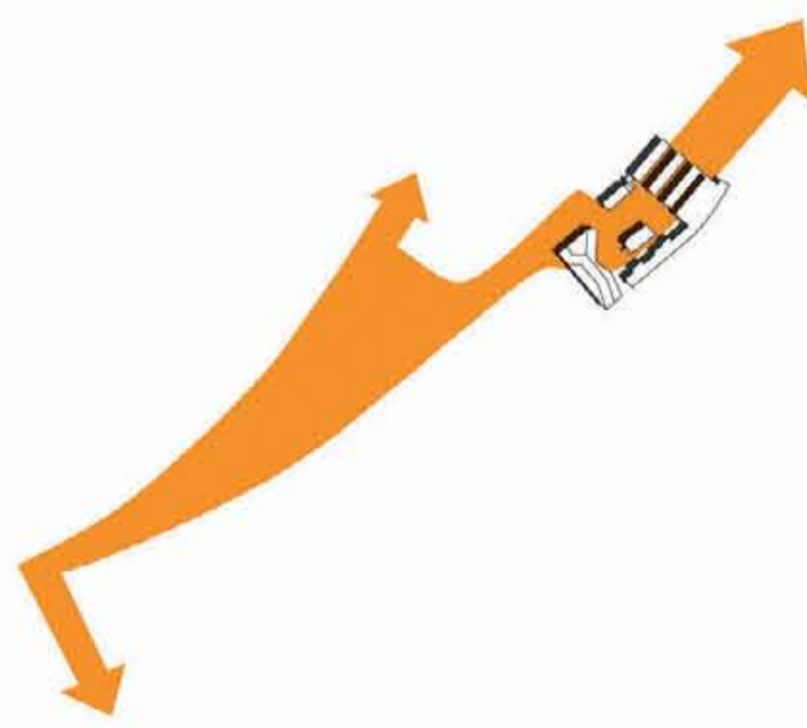
FUTURE GOES EAST



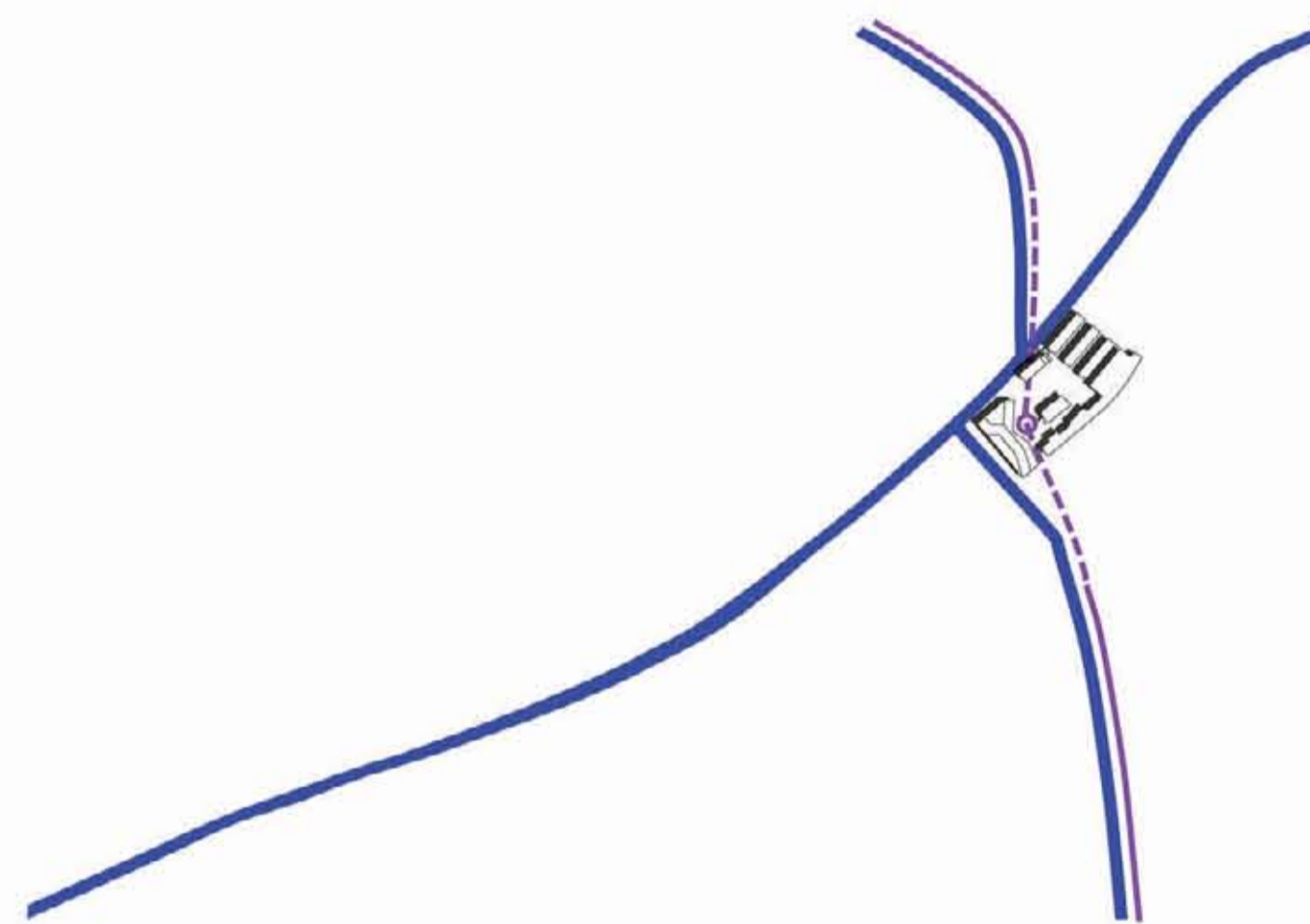
a CULTURAL POLARITIES AND FLOWS



b URBAN DYNAMICS AND THE CITY OF TOMORROW



c THE CONTINUITY OF PUBLIC SPACE



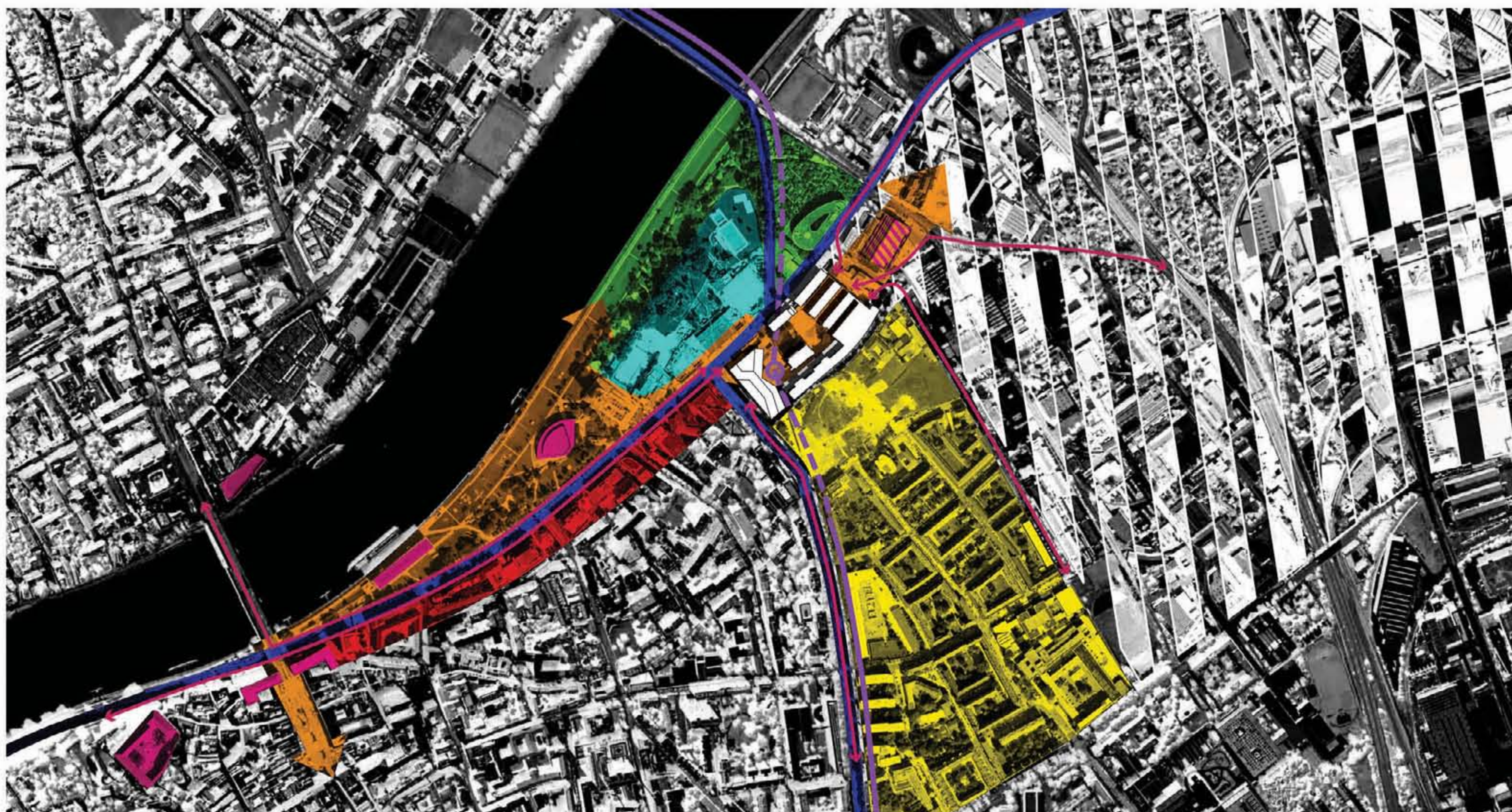
d MOBILITY SYSTEM

a The sequence of the cultural district buildings finds its natural continuity in the path that crosses the **pensiero fabrik** towards the eastern area of the city.

b Due to its position among the residential settlement (south), the cultural district (west) and the green belt along the Danube (north), the **pensiero fabrik** promotes a future functional renovation towards east.

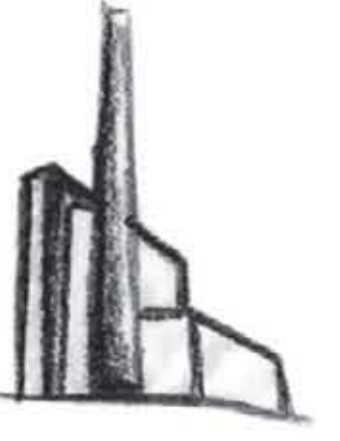
c The diagram shows how the public space that flows along the river comes into the **pensiero fabrik**, crosses the inner space and suggests the future development.

d The central location of the underground tramway stop highlights the **pensiero fabrik** inner square as a new collective public space.



- cultural buildings
- future cultural polarity
- future development area
- green belt
- services and office buildings
- wellness and sport activities
- housing/residential
- public spaces
- main roads
- tramway
- underground tramway stop

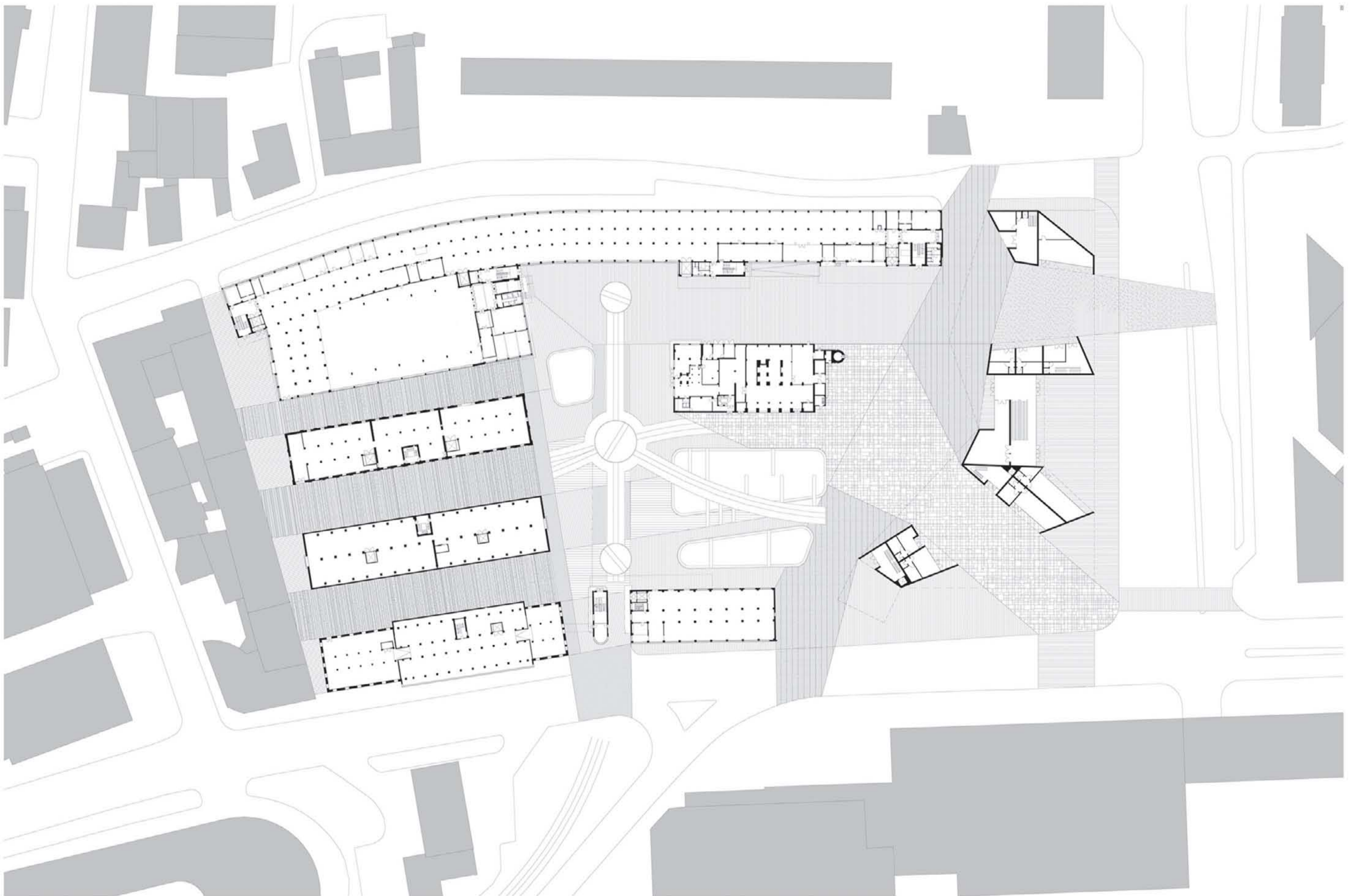




pensierofabrik
URBAN FLOWS

G . E . C
Green Economy Center

URBAN SPACE CONFIGURATION

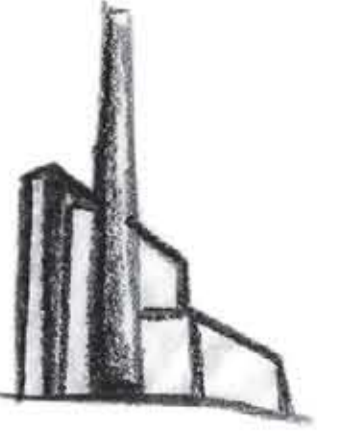


The spatial relationship between the pre-existence and the new building.



Urban insertion.

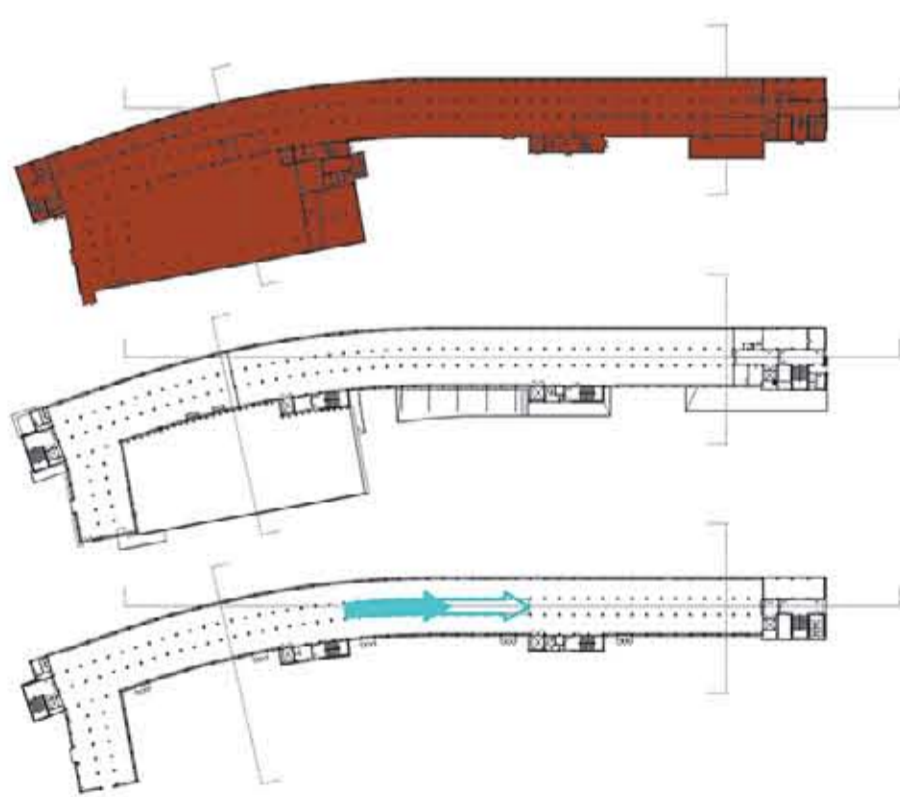
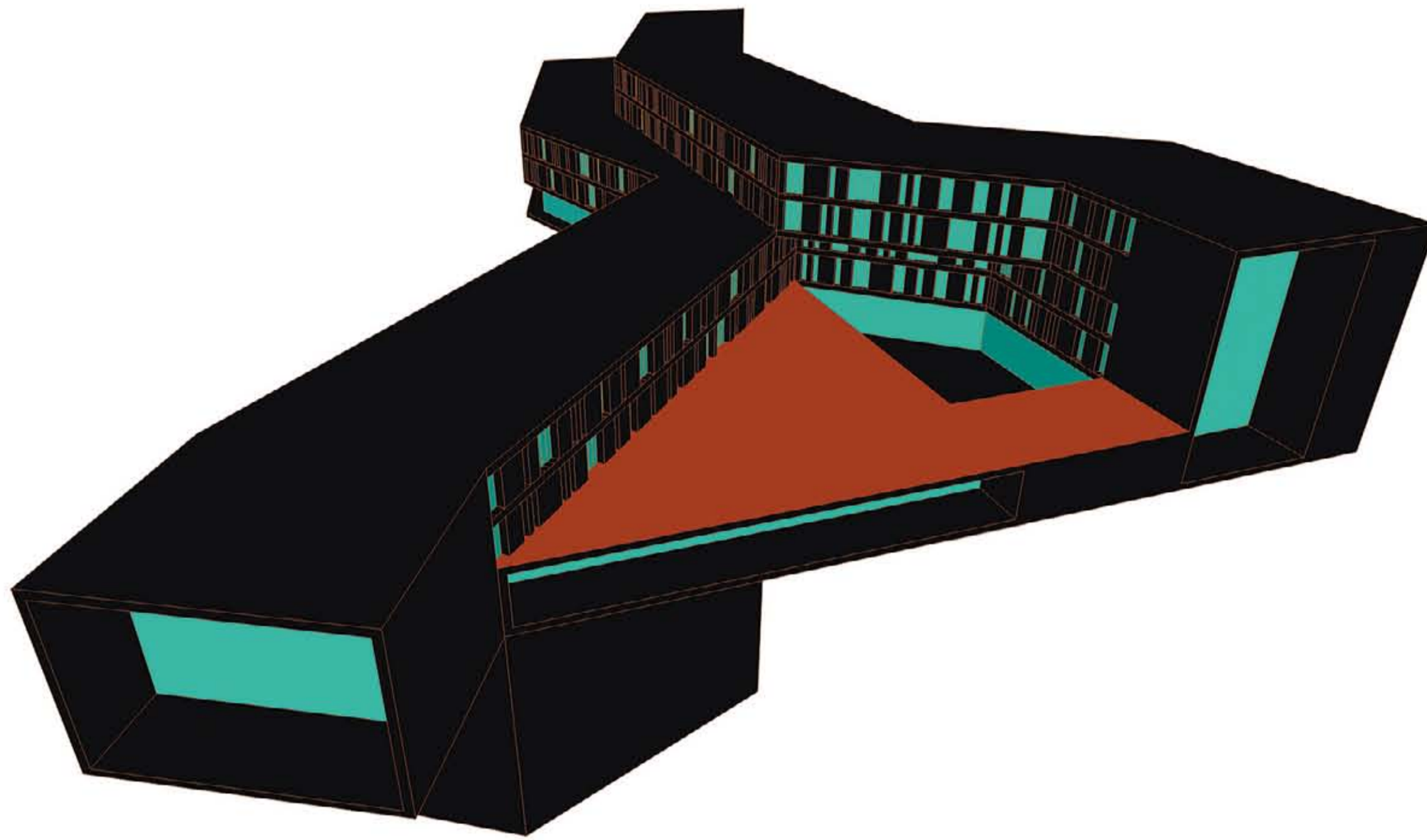




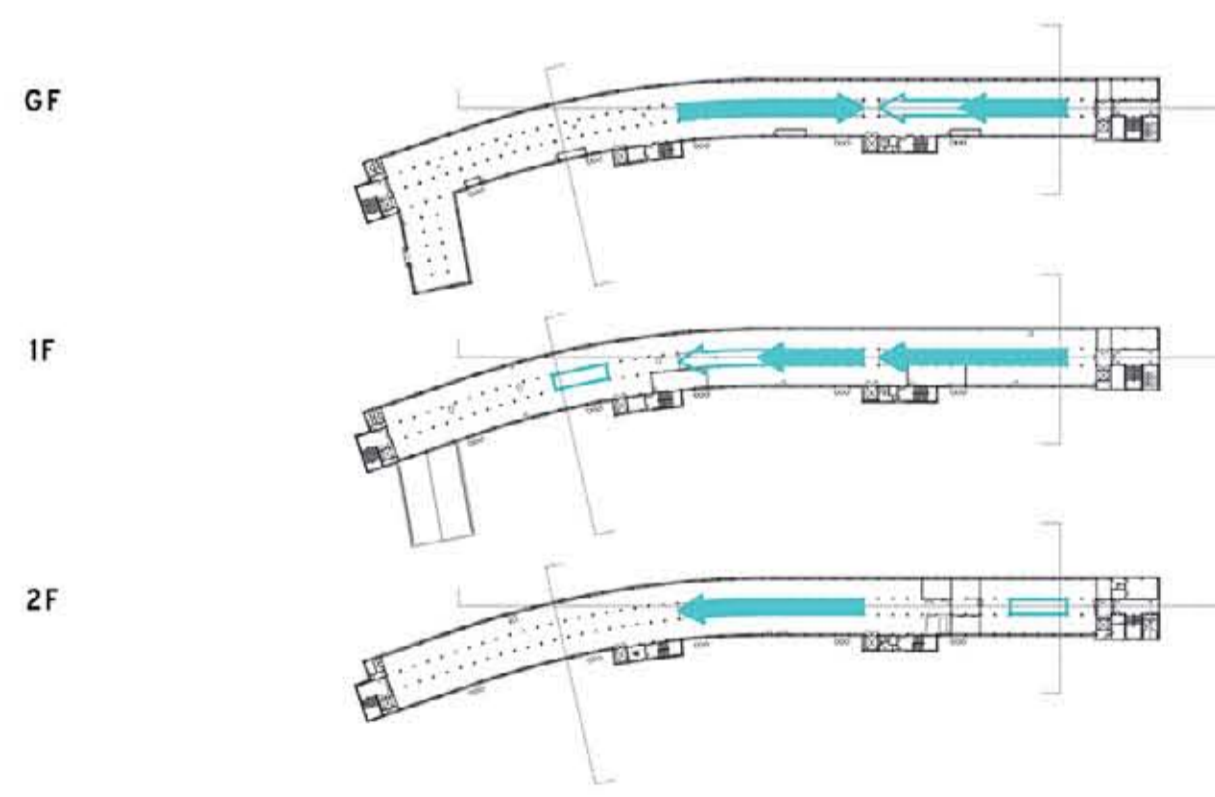
pensierofabrik
URBAN FLOWS

G . E . C
Green Economy Center

THE NEW URBAN SETTLEMENT



The ground floor maintains the original factory configuration.



The fourth floor is not accessible in the original configuration. Now by means of new accesses and paths it is part of the internal space.

THE SECTION STRATEGY FOR BUILDING ONE

