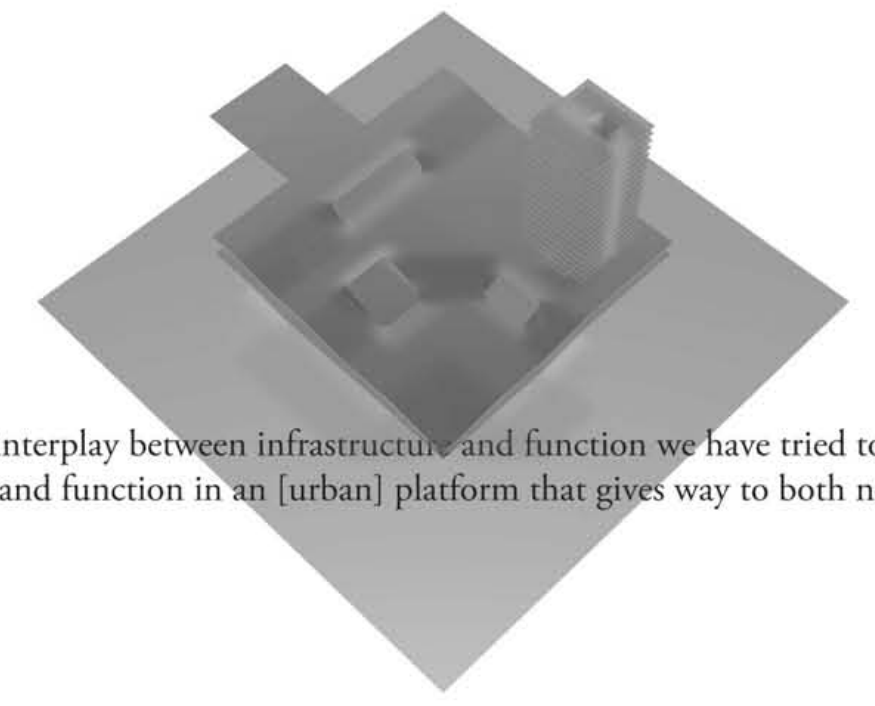


A second [urban] layer: wooden high rise and connective base



Introduction / the concept

It's the 'place', the infrastructure and the function that makes this submission special. Through the interplay between infrastructure and function we have tried to develop a concept that is both simple, open and dynamic - There exist here an opportunity to combine infrastructure and function in an [urban] platform that gives way to both new possible developments and 'inner urban growth'

... The concept is conceived:

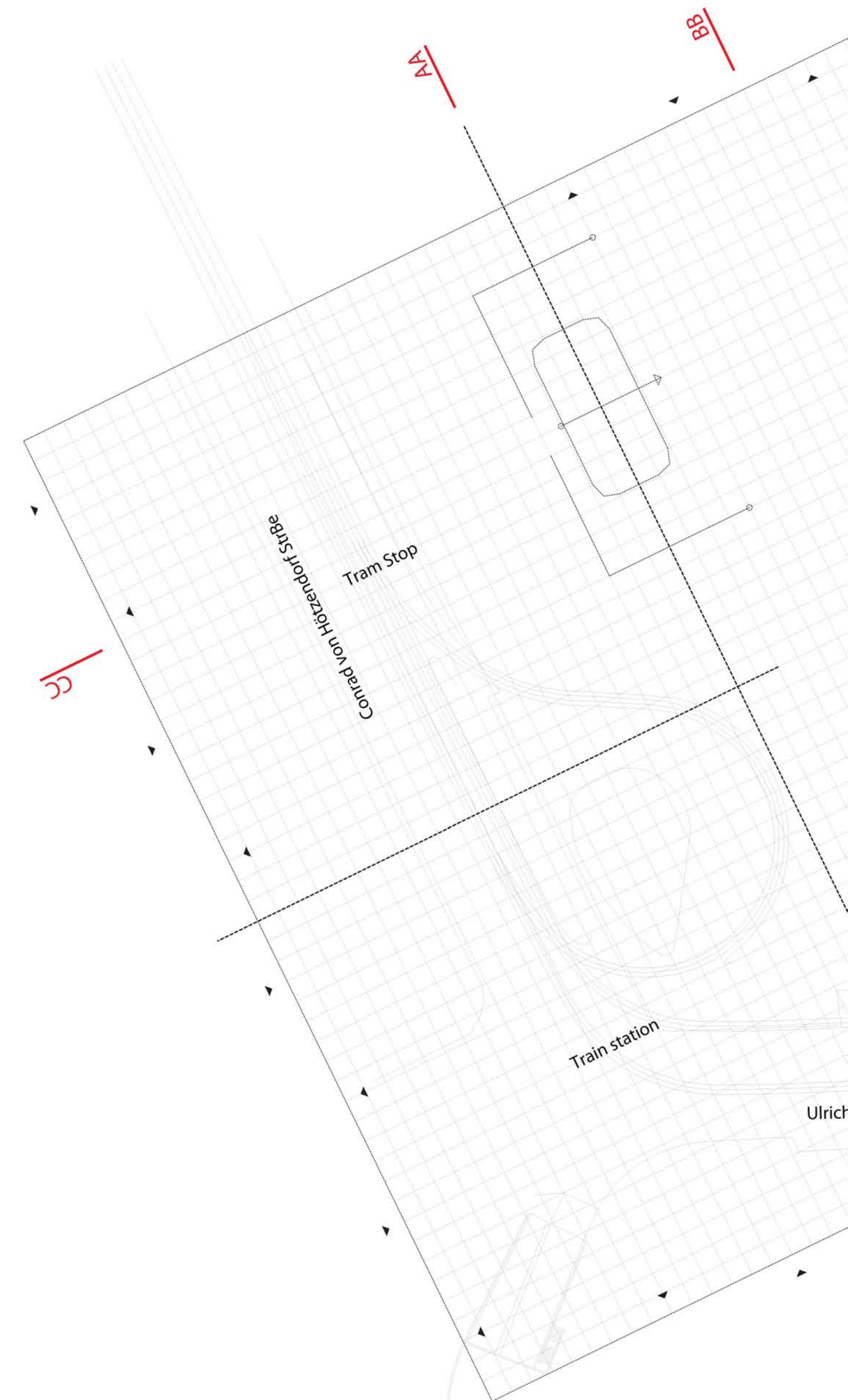
- Functionally optimized and simple organized, allowing the visitors to easily orientate themselves between the complex functions and qualities.
- Open, dynamic and tightly integrated into the existing infrastructure of the site, allowing for new dynamics, possible future developments and 'inner urban growth.'

A platform for contemporary [urban] life.



00

1:2000

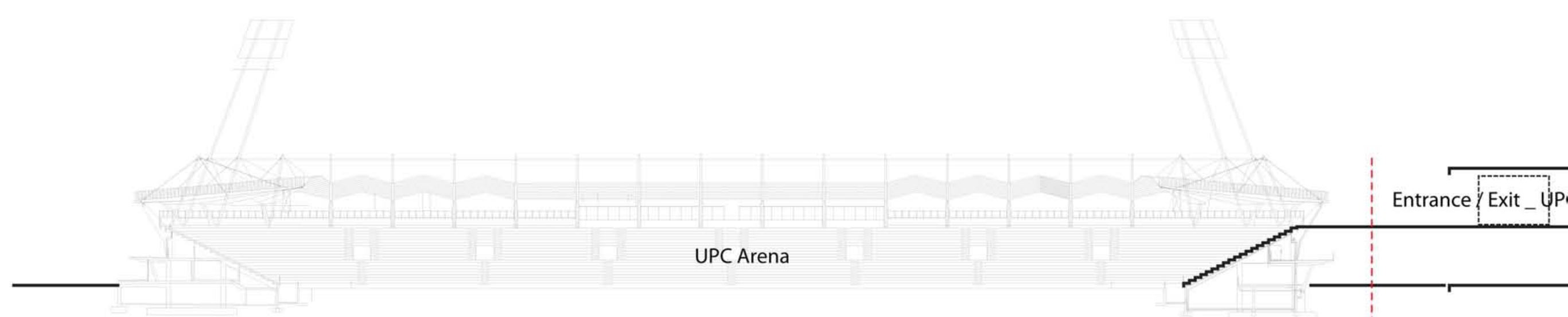
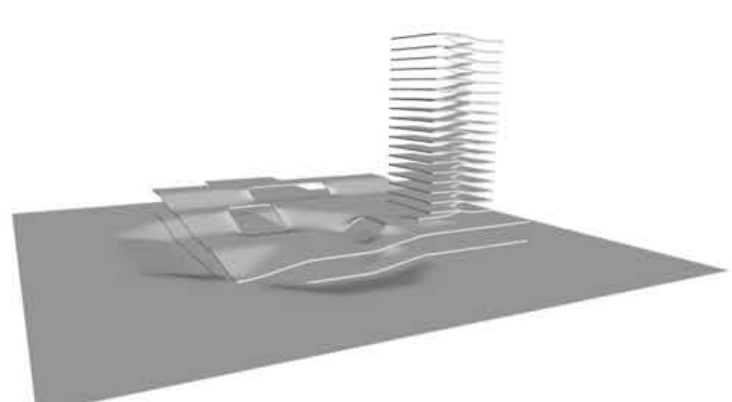
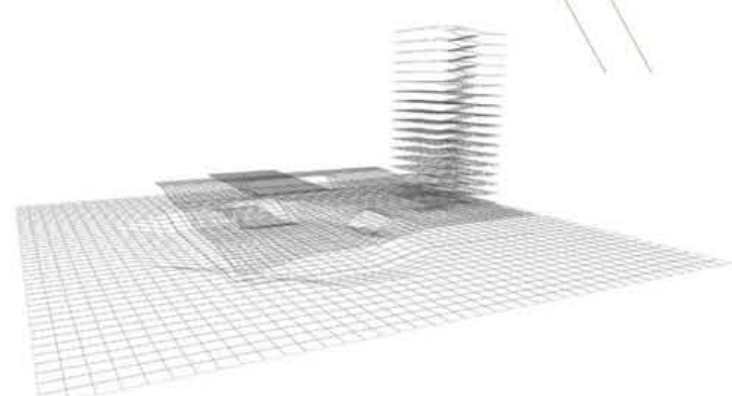
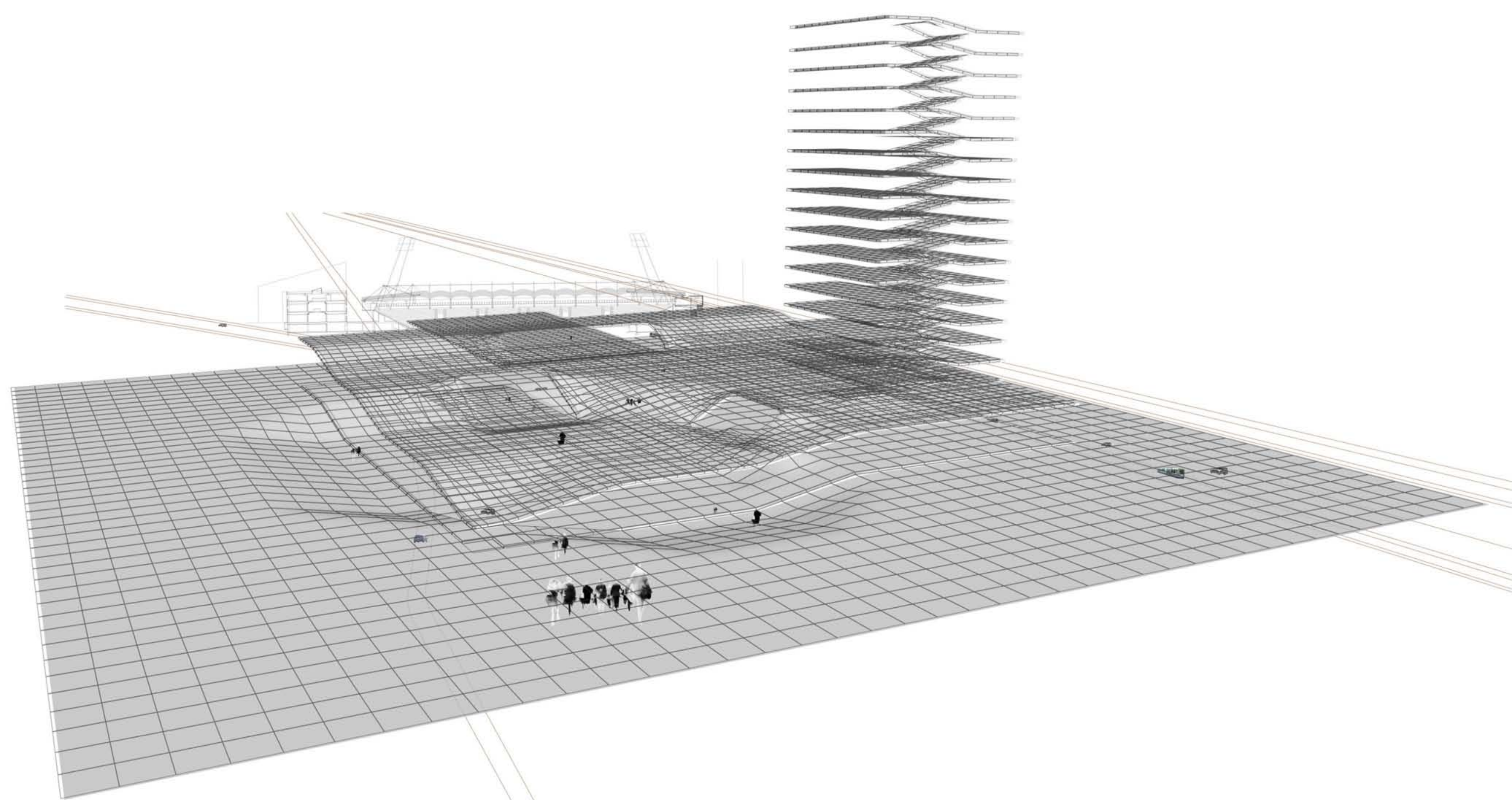


The complex

The complex is situated as a direct extension of the existing UPC-arena towards north. A square is drawn at the edge of the city, at one of it's most important entrance points. Through it's infrastructural integration it literally folds in it's surrounding programs, a connecting field that organizes, connects and accommodates varying functions and flows on the site and its surroundings.

The complex consist of two main elements:

- A Connective Base that situate the complex on the site, folds in a number of existing infrastructural flows and serves as platform for a number of varying functions.
- A [wooden] highrise raised above one of the densest infrastructural spots in the city, a landmark giving way to highly integrated urban living.





01

1:500

1:500

Connective base – from fragmented plots to connecting field

The 'Connective Base' consist of two main decks, an upper and a lower surface.

The lower surface provides space for car parking situated towards east, a tram stop towards north west and a [future developed] train station towards south west

The lower surface is entered directly from street level towards Conrad von Hötzendorf Straße and Ulrich Lichtenstein Gasse. The lower surface can be entered by car towards Johan Sebastian Bach Gasse and Evangelimangasse.

The 'connective base' is a place where different means of transport converge and where people change means of transport. One can literally shift from car to bike, from car to tram, from car to walk and from car to 'walk' – A place that substantially reduces individual motor traffic.

Through a number of slopes connecting the two surfaces one can easily access the upper surface. The upper surface can also be accessed via the 'kiss and ride' zone situated in north-east.

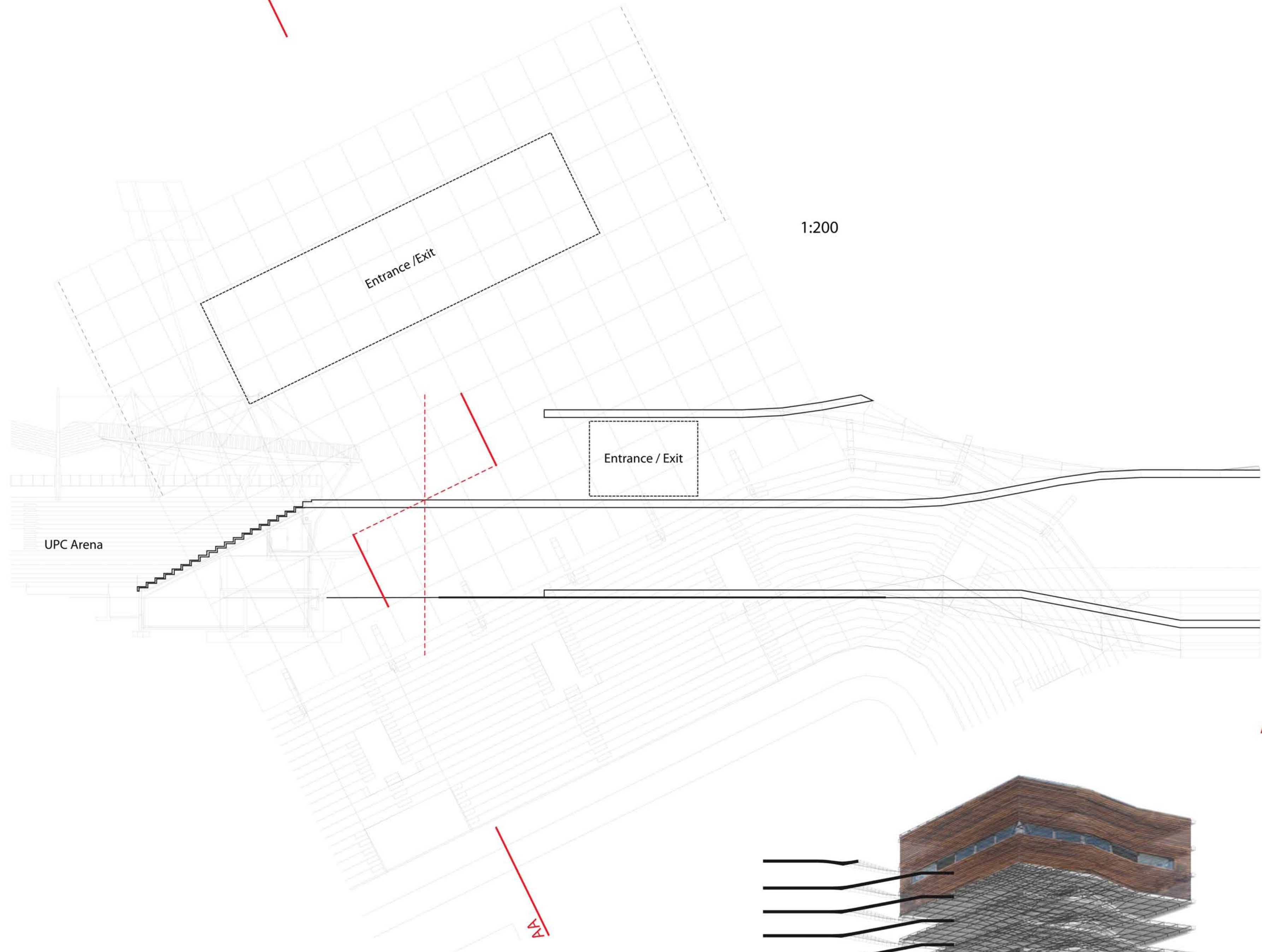
The Connective Base facilitates infrastructural 'shifts' on the site and allow for new interconnected programs. – A second [urban] layer.

UPC Arena

Car park

Car park

AA_1:500



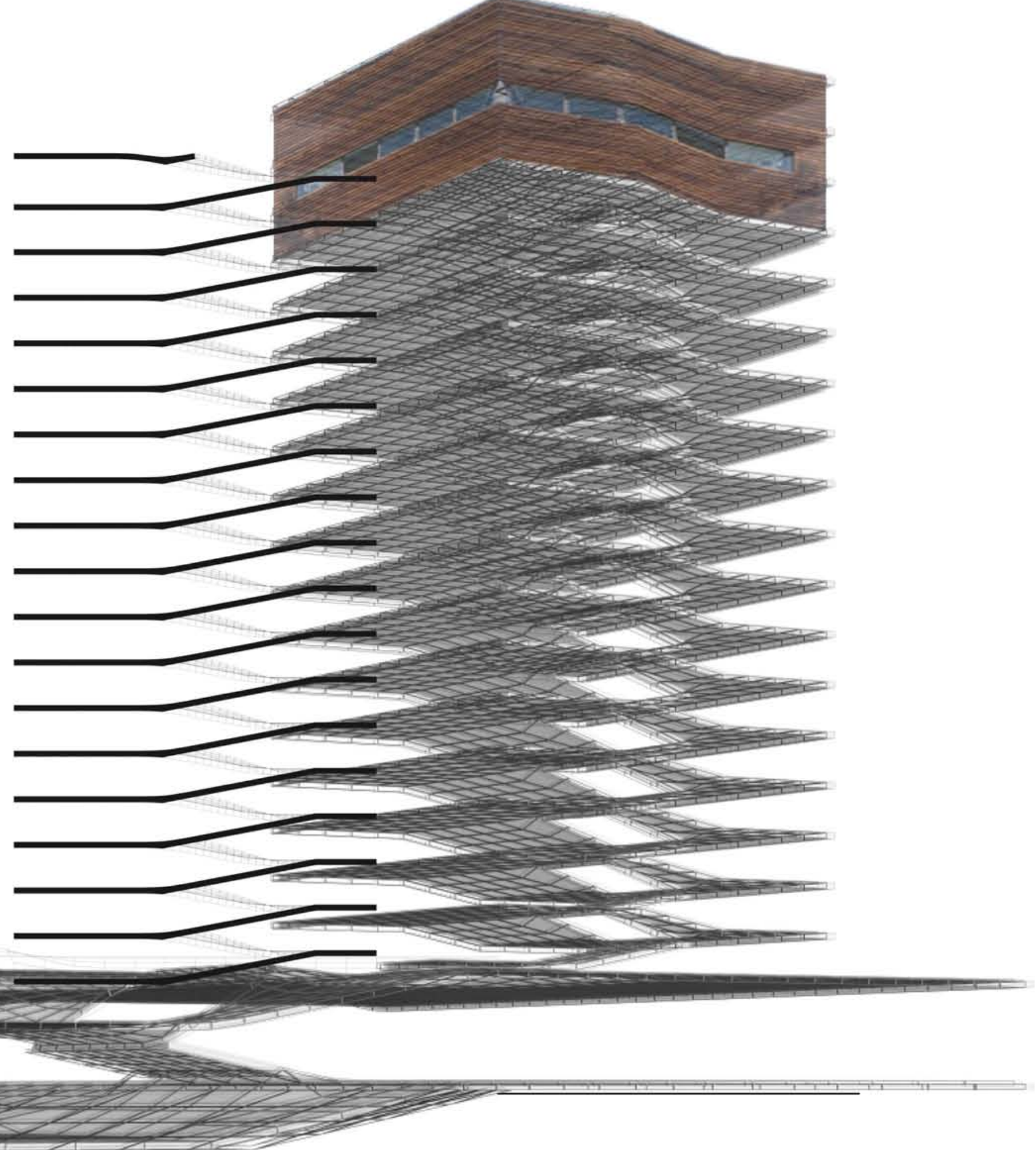
1:200

AA_1:200

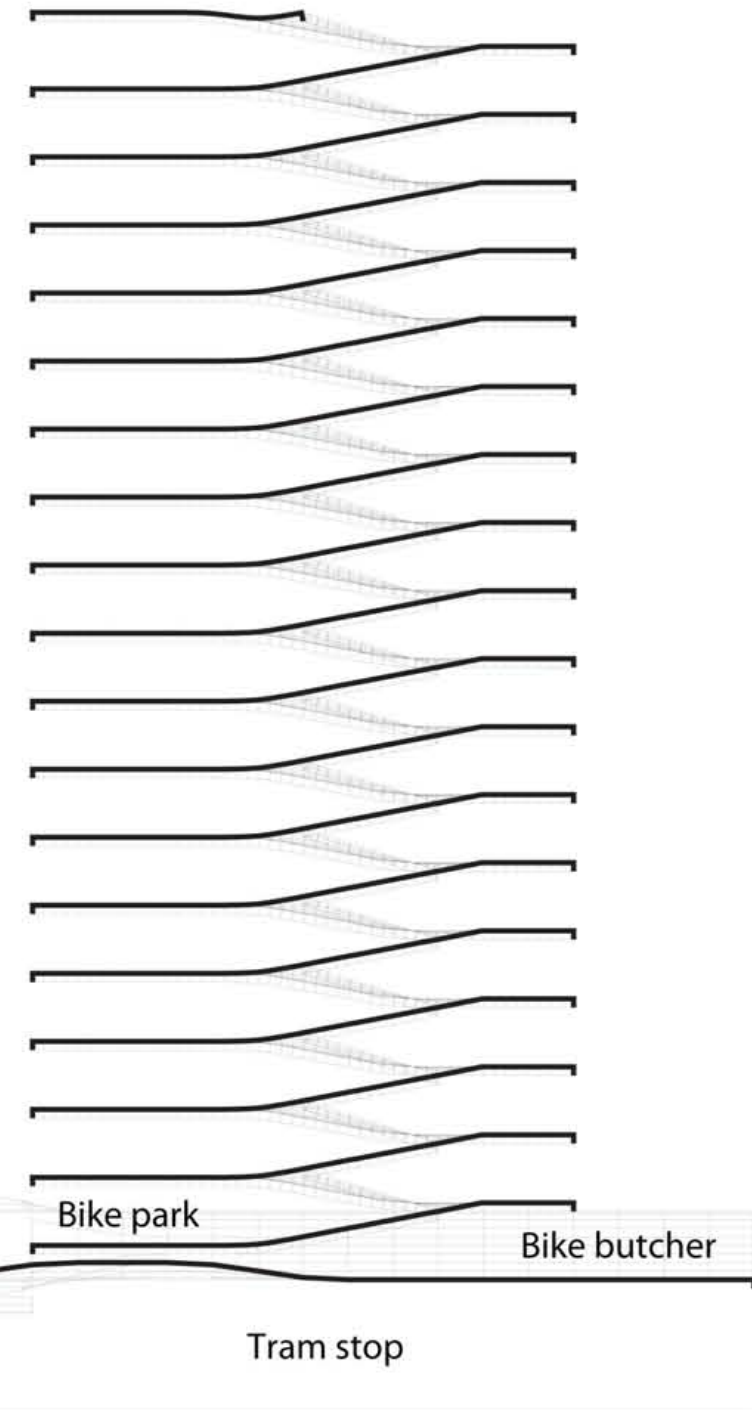
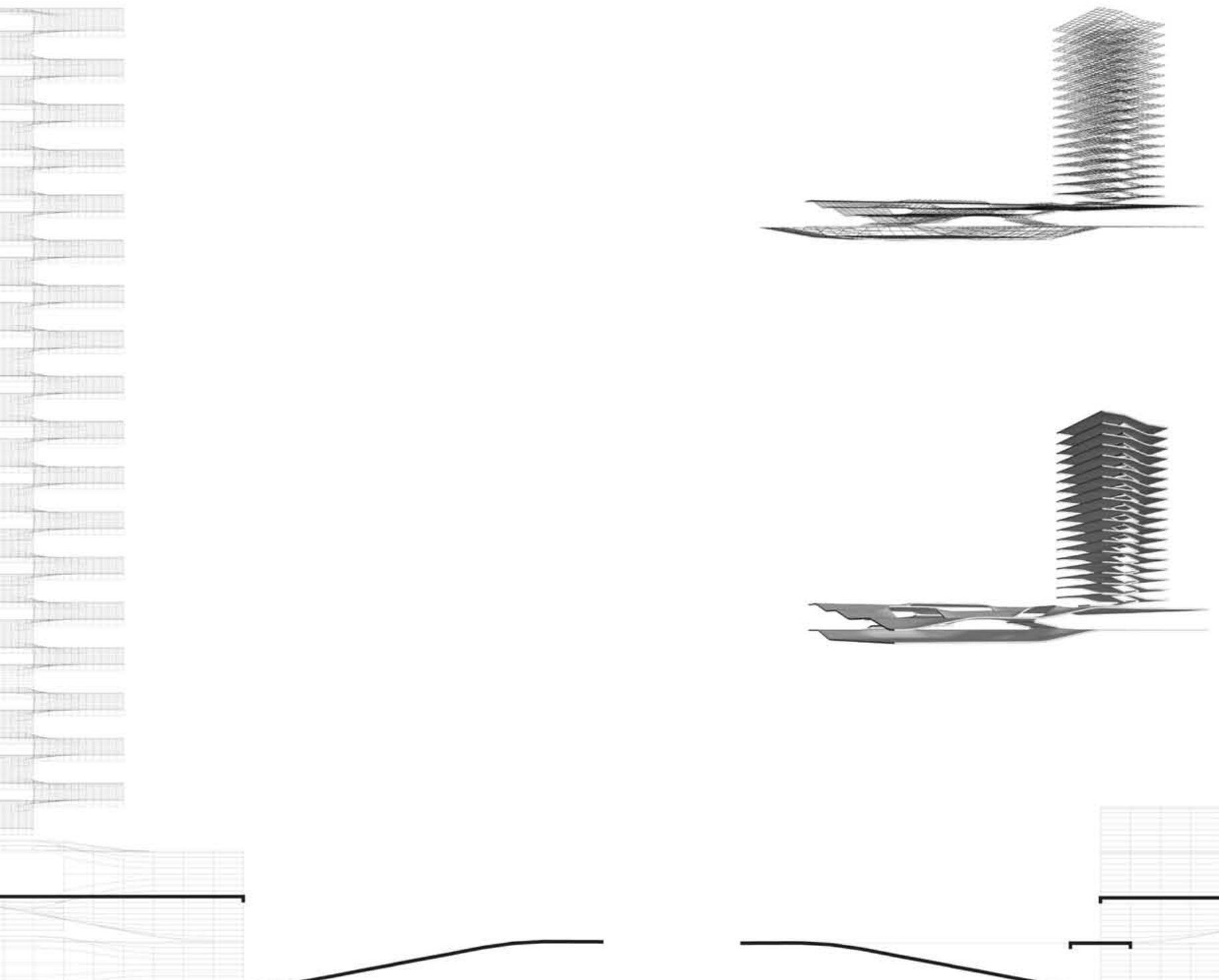
Wooden highrise – Living in the highest wooden house.

A 'wooden highrise' is situated in the north-west corner of the complex above the . A 100m-high residential tower placed where Conrad von Hötendorf Straße meets the complex.

A highrise raised above one of the densest infrastructural spots in the city marking a landmark for contemporary and highly integrated [urban] living.



Tower_1:500



Car park

Bike park

Bike butcher

Tram stop

BB_1:500

CC_1:500