



Project site

Gras city has contains possible development direction from **north to south** (characteristic of the topography- strong mountain range formation from south to north). Forms a **gradation** which is degree of development from north to south.

The projet site is characterized **starting point** from UPC-ARENA, the development direction contains possibility of **change towards the north** (center of the city).

The external site masses are of an alignment of small dots, they tend to spread from east to west (horizontally), rather than south to north (vertically). From east towards west, gradation which is degree of development becomes remarkable (turning point: River MUR).

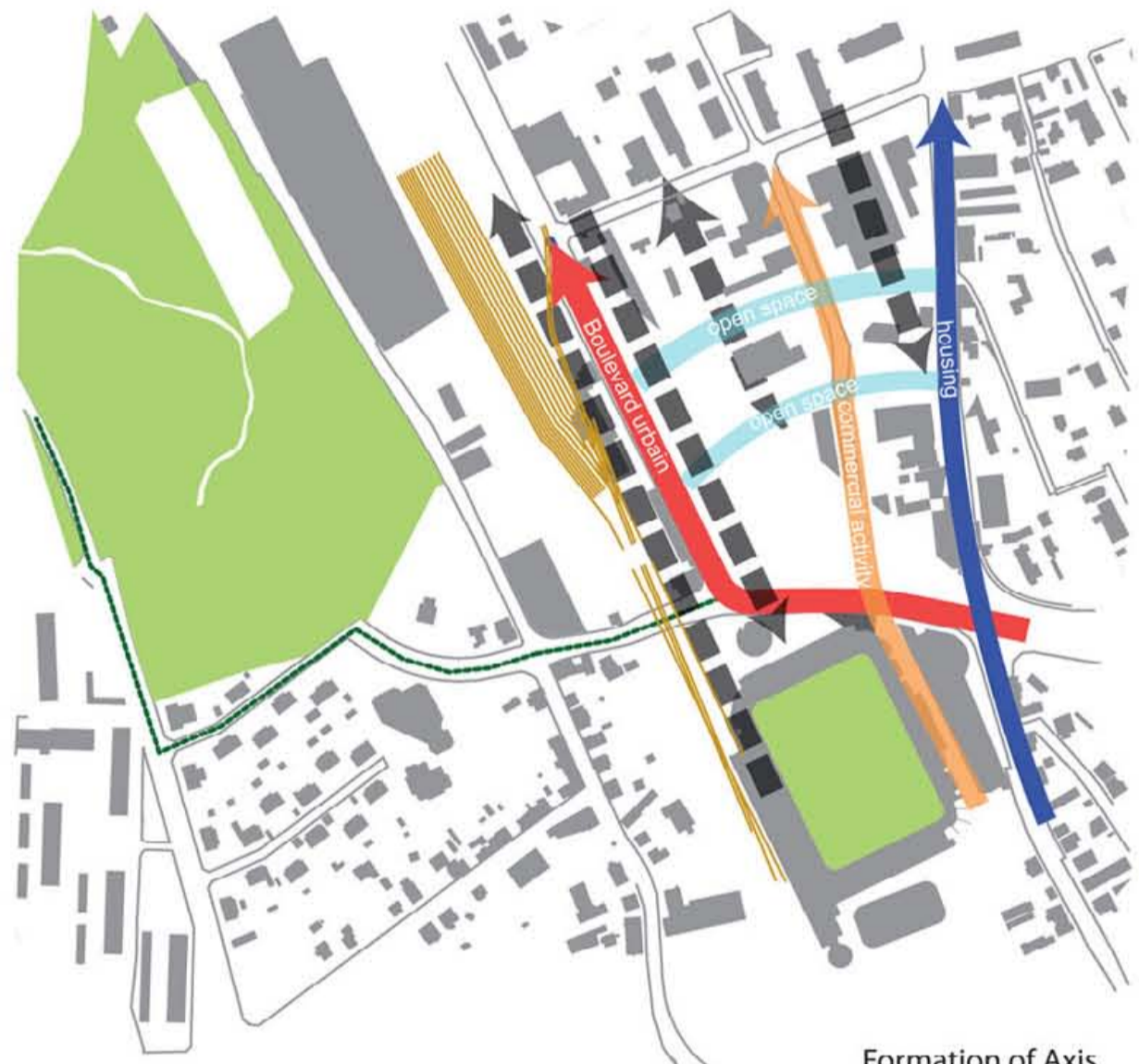
Directivity goes from north to south; the east-west connection is rather weak but has a small stream of direction. In this stream, the site becomes an intersection from south-north and east west, stream of the roads that have been cut by the site: east to west.

The direction towards northern part (center of the city) is the turning point. **Gate** from external GRAZ to the city.

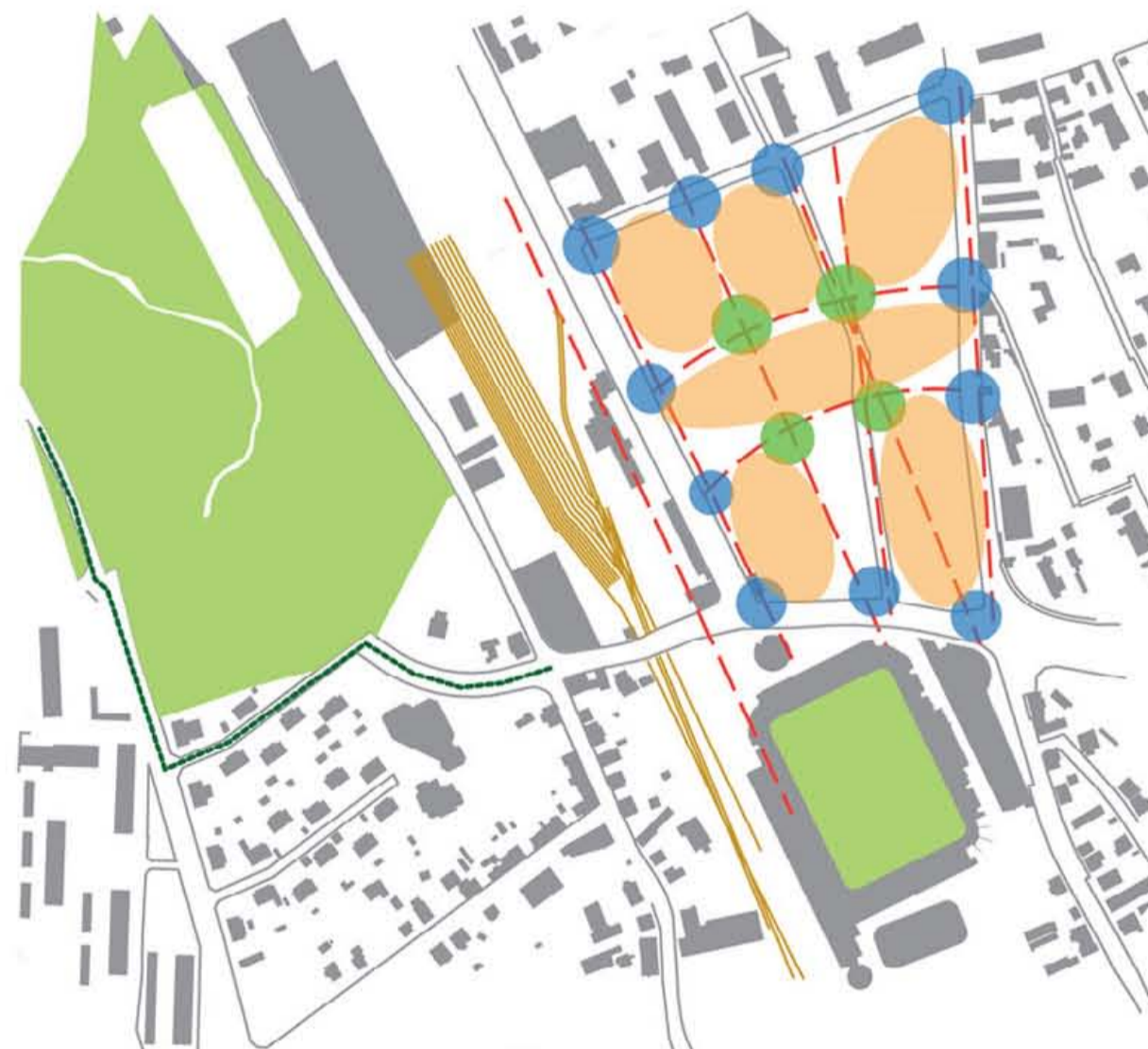


site plan 1/2000

Keyword for Starting the project



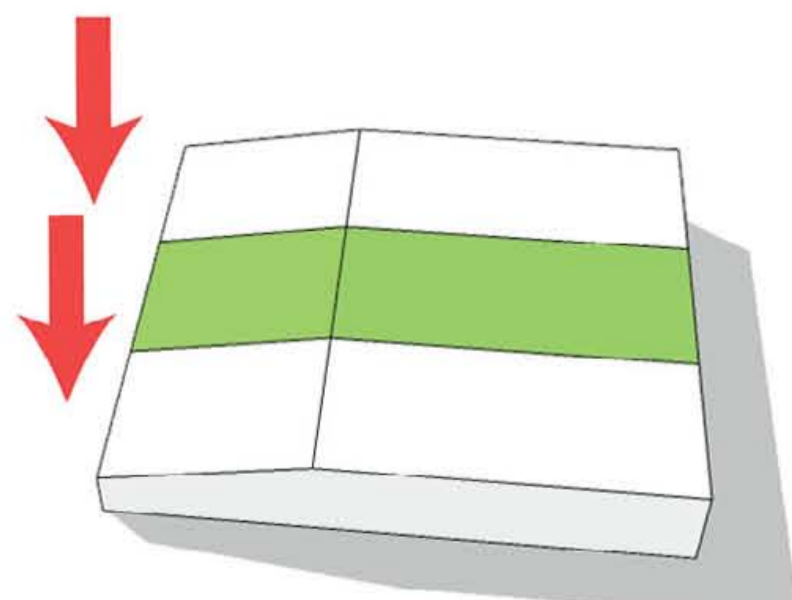
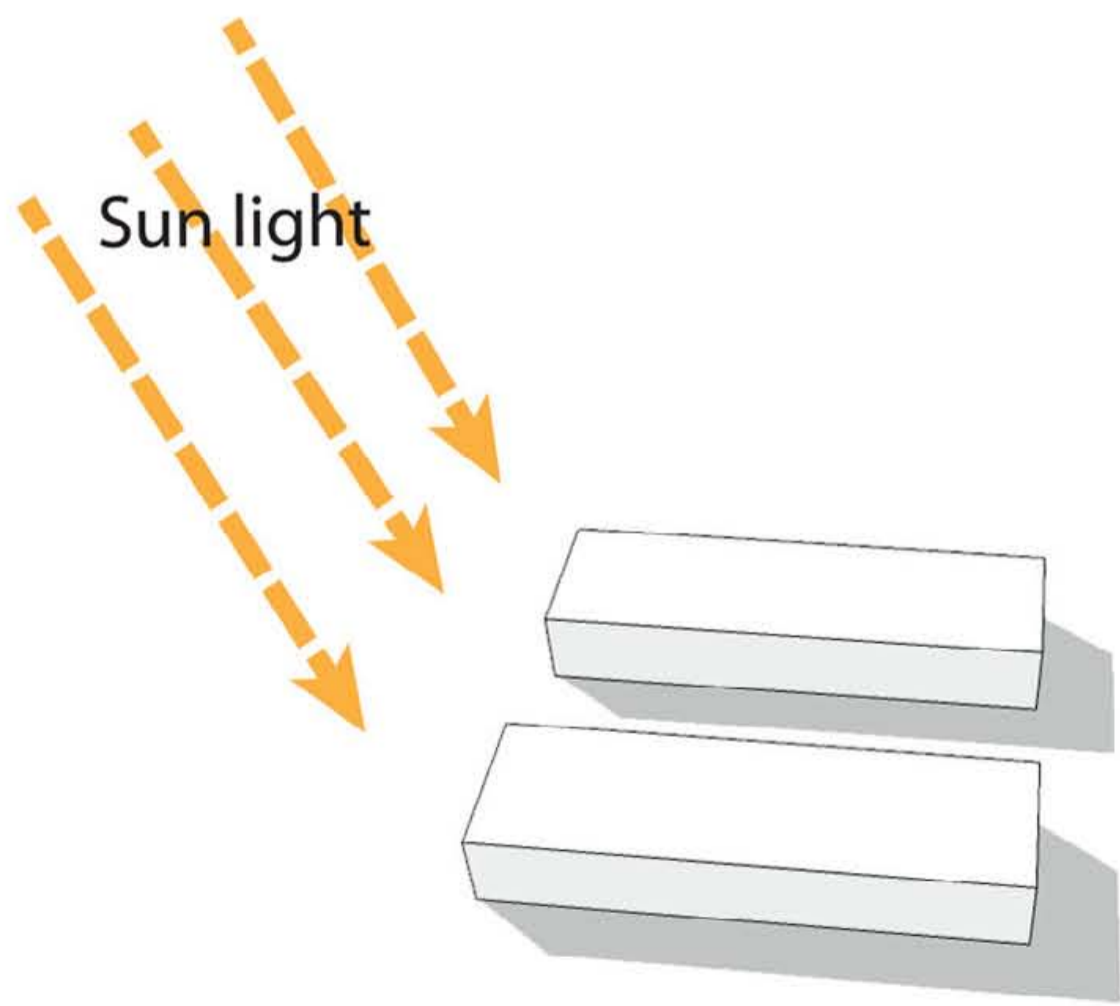
Formation of Axis
Stream of the building
Stream of empty spaces: east to west



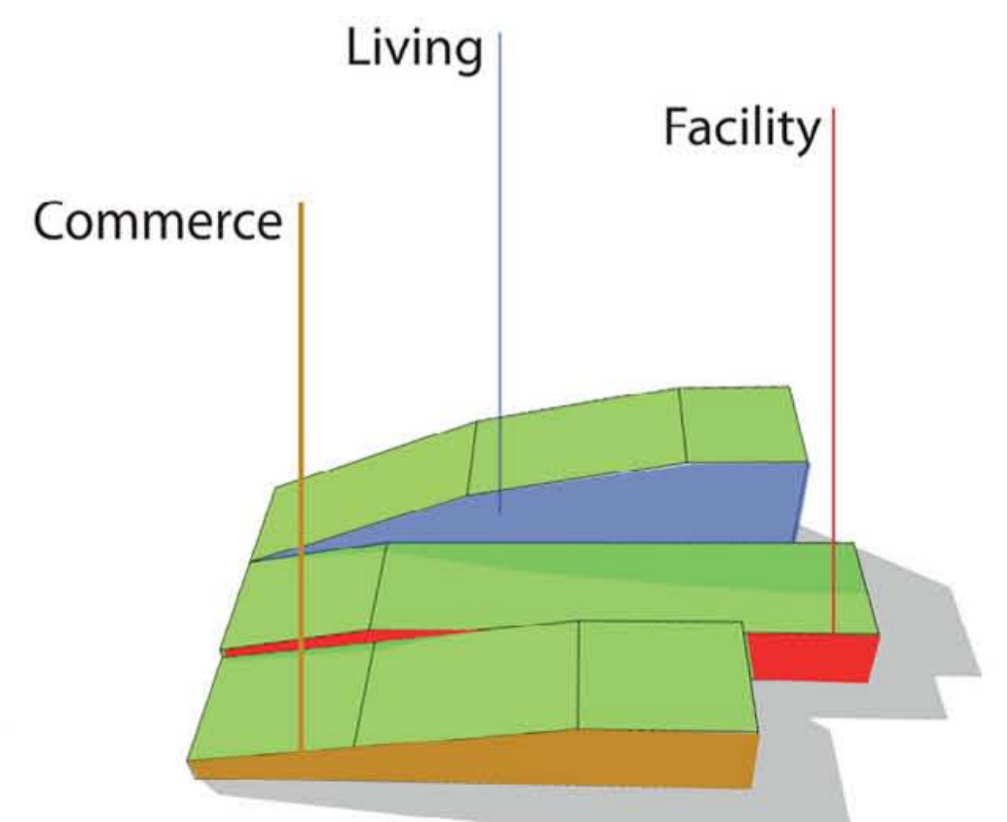
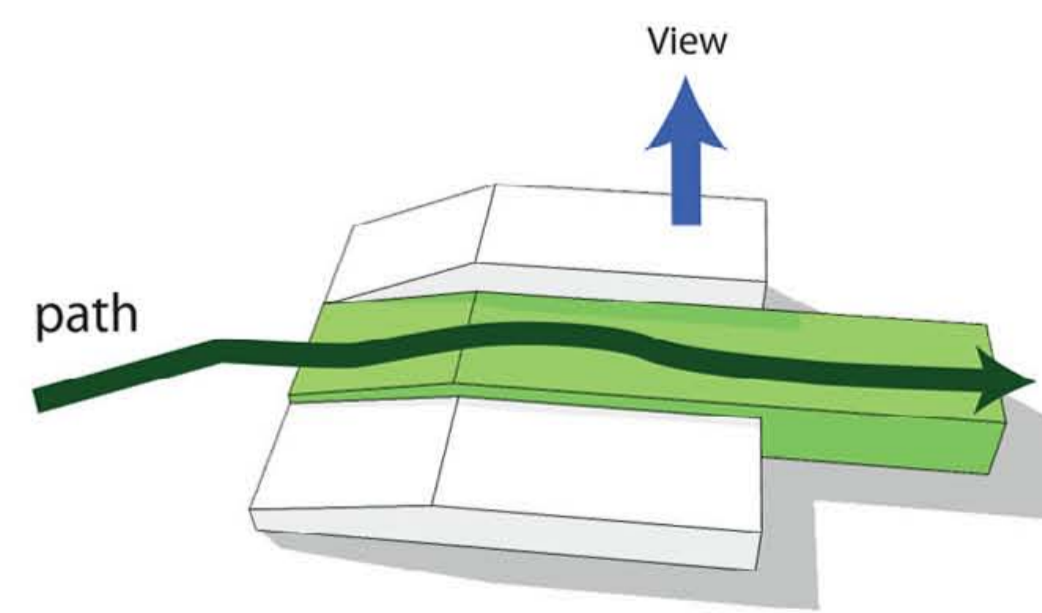
- Intersection of site's boundary and the axis
- Intersection of width axis and length axis
- Space area - forms the volume's zoning



strong direction from south to north
creates various spaces according to view
Connection through 'green space' surrounding



The roof that is an extended site of the ground forms the mixed purpose volumes into one area.



Each volume contains mixed program

Glockenturm



446M

SCHLOBERG

The new sign inside the city for GRAZ

The form of the tower comes from perpendicular extending of line in the internal site's volume.

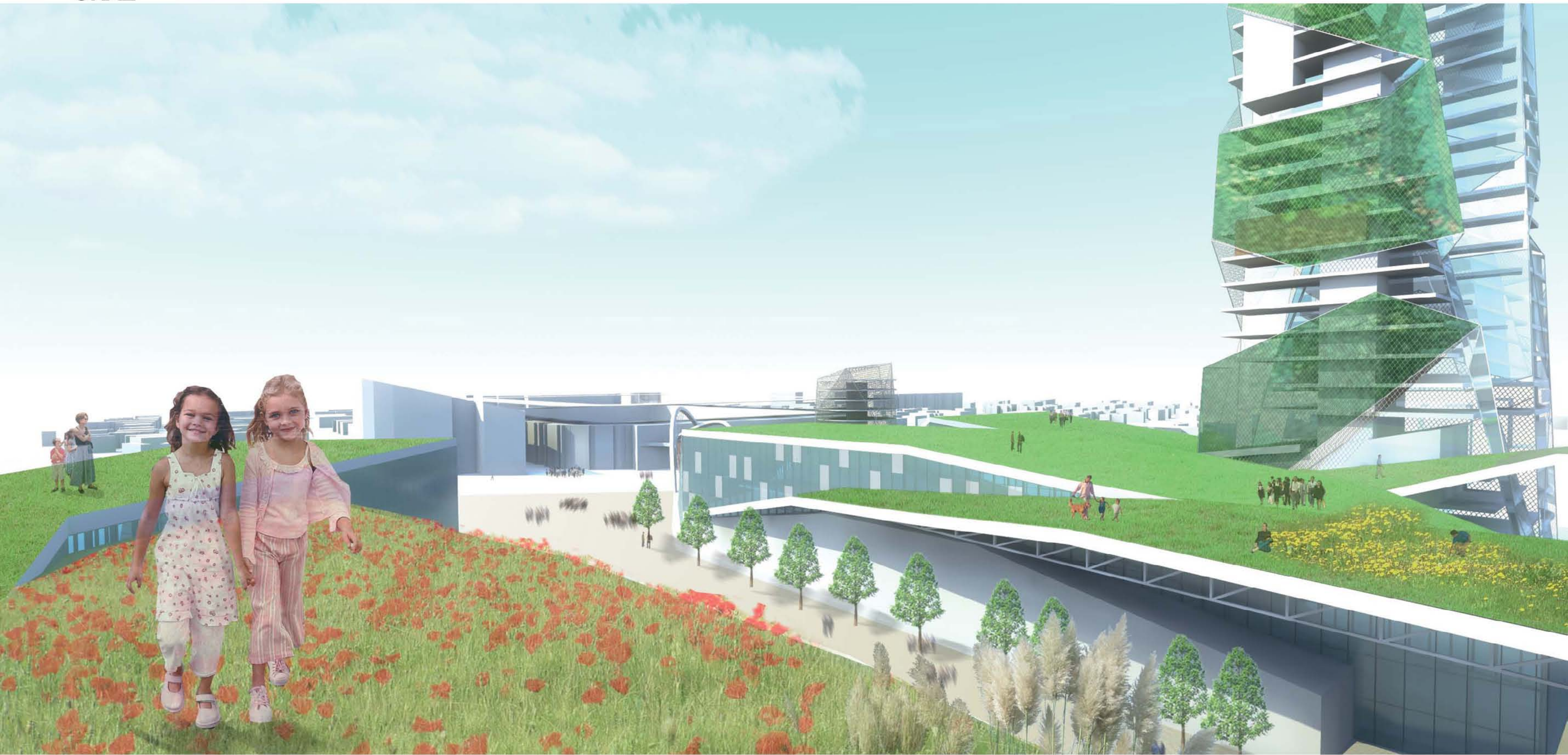
Evade grey city with the use of environmental materials, and reflect the characteristic of Graz that has abundant green space.

Expressing the landmark from the volume and at the same time, the landmark that have the image of a park.

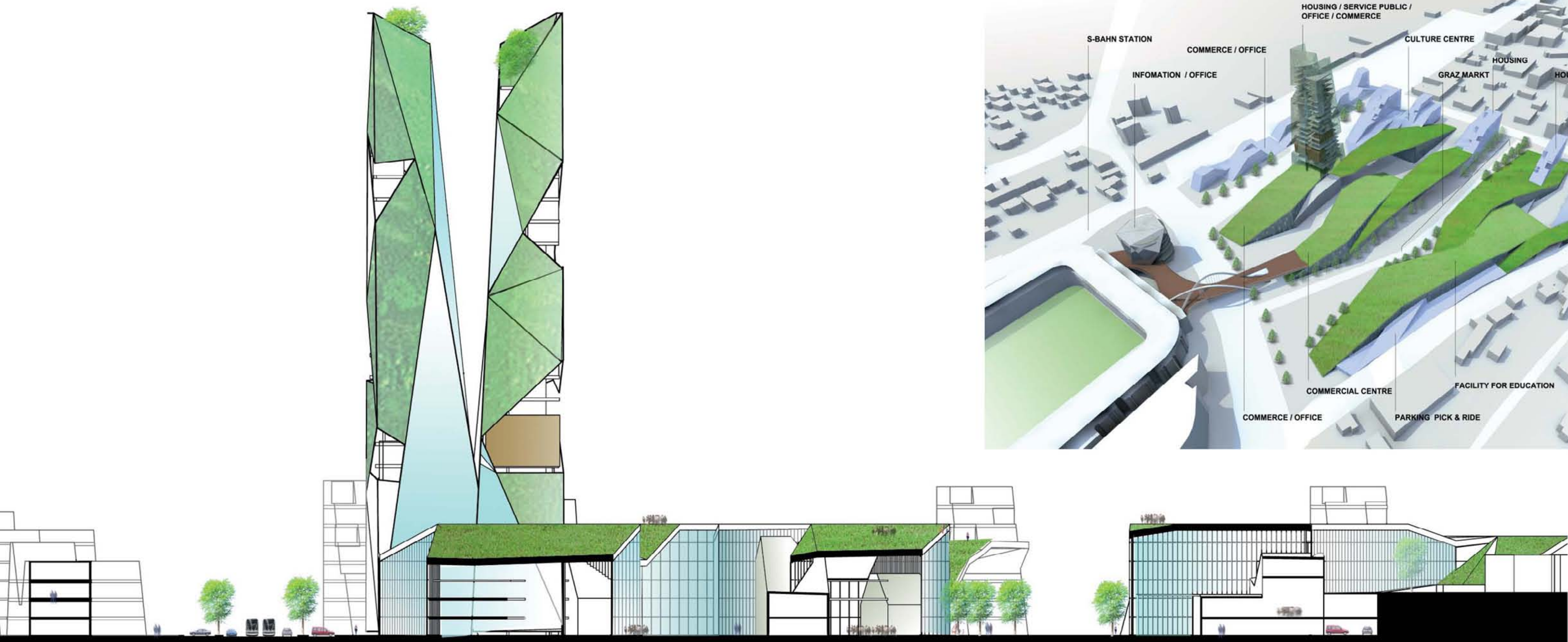
Stadion-Turm

Liebenauer Stadion

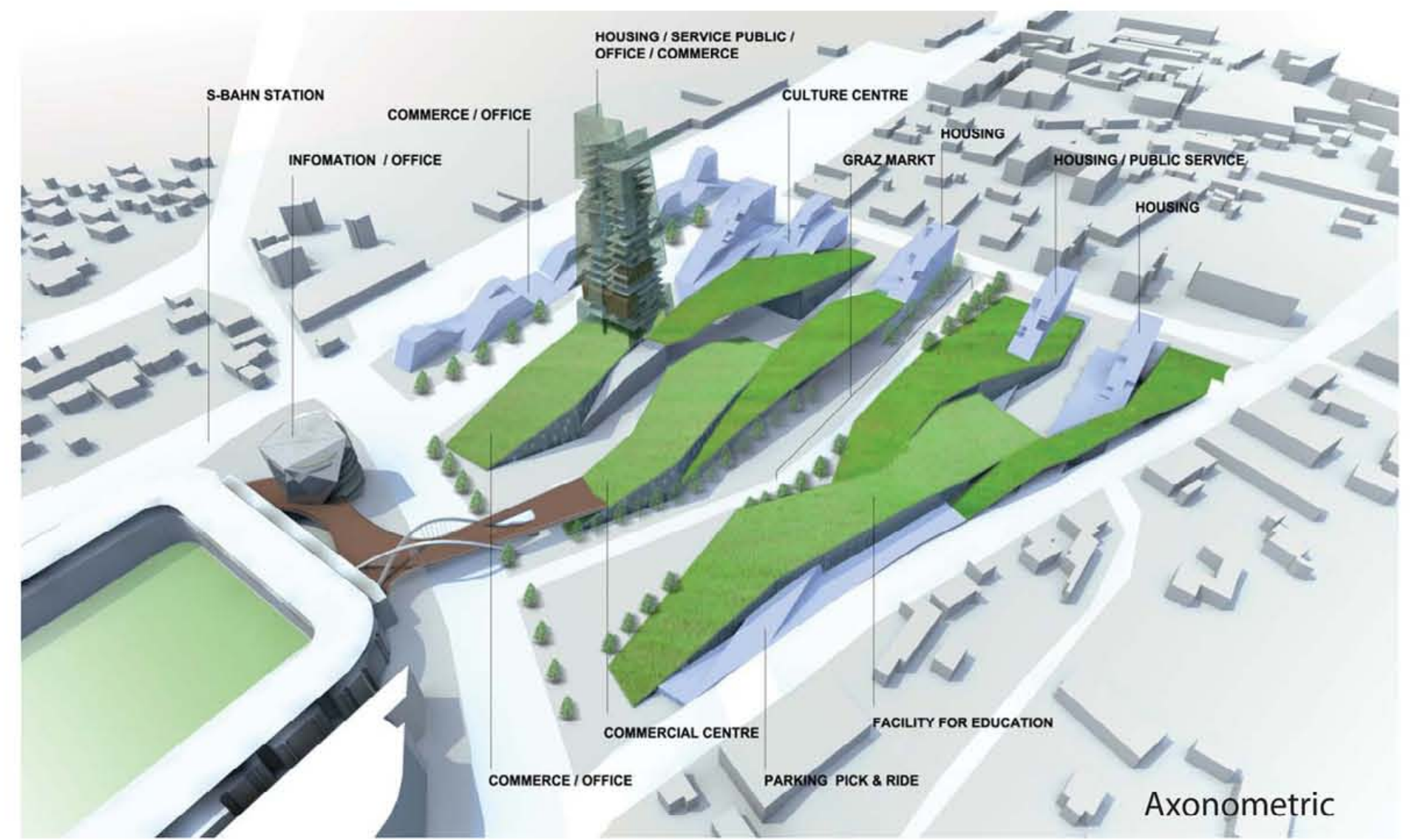
346M



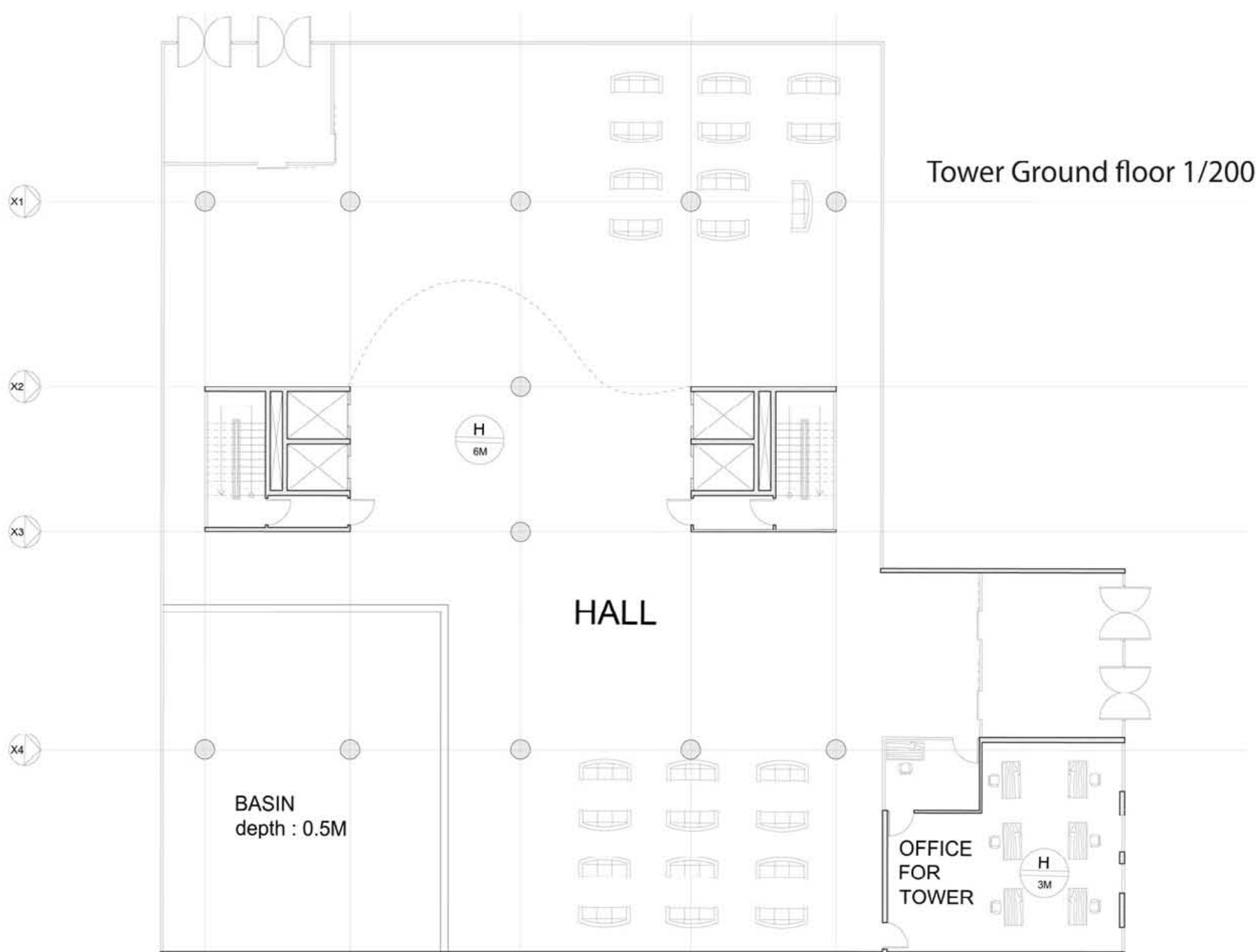
View from Eco-garden



Crosse Section A -A' 1/500



Axonometric

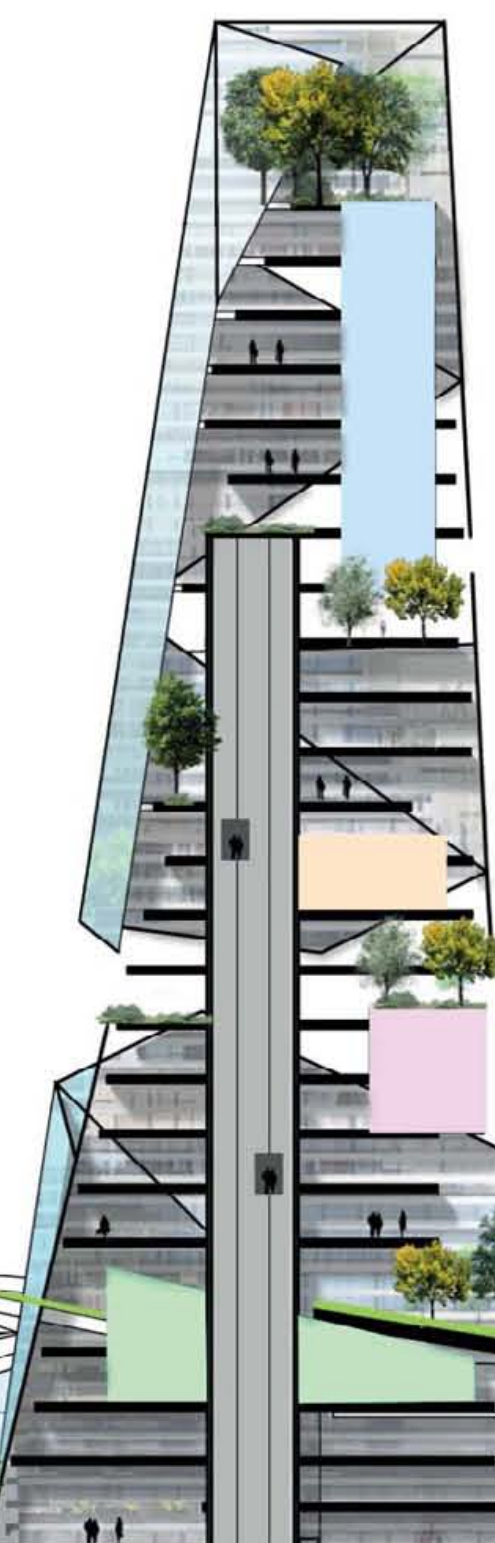


Tower Ground floor 1/200

HALL

BASIN
depth : 0.5M

OFFICE
FOR
TOWER



ECO-GARDEN

APARTMENT

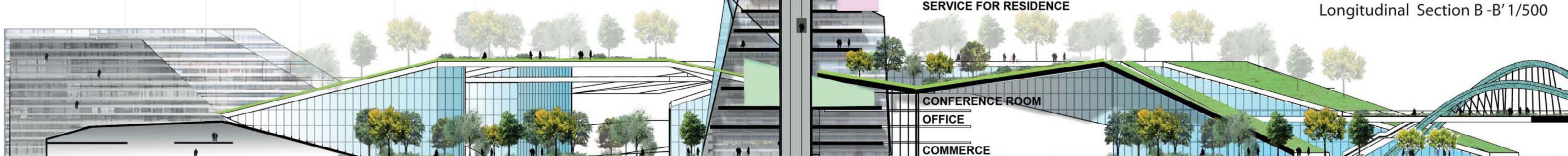
SERVICE FOR RESIDENCE

CONFERENCE ROOM

OFFICE

COMMERCE

Longitudinal Section B -B' 1/500

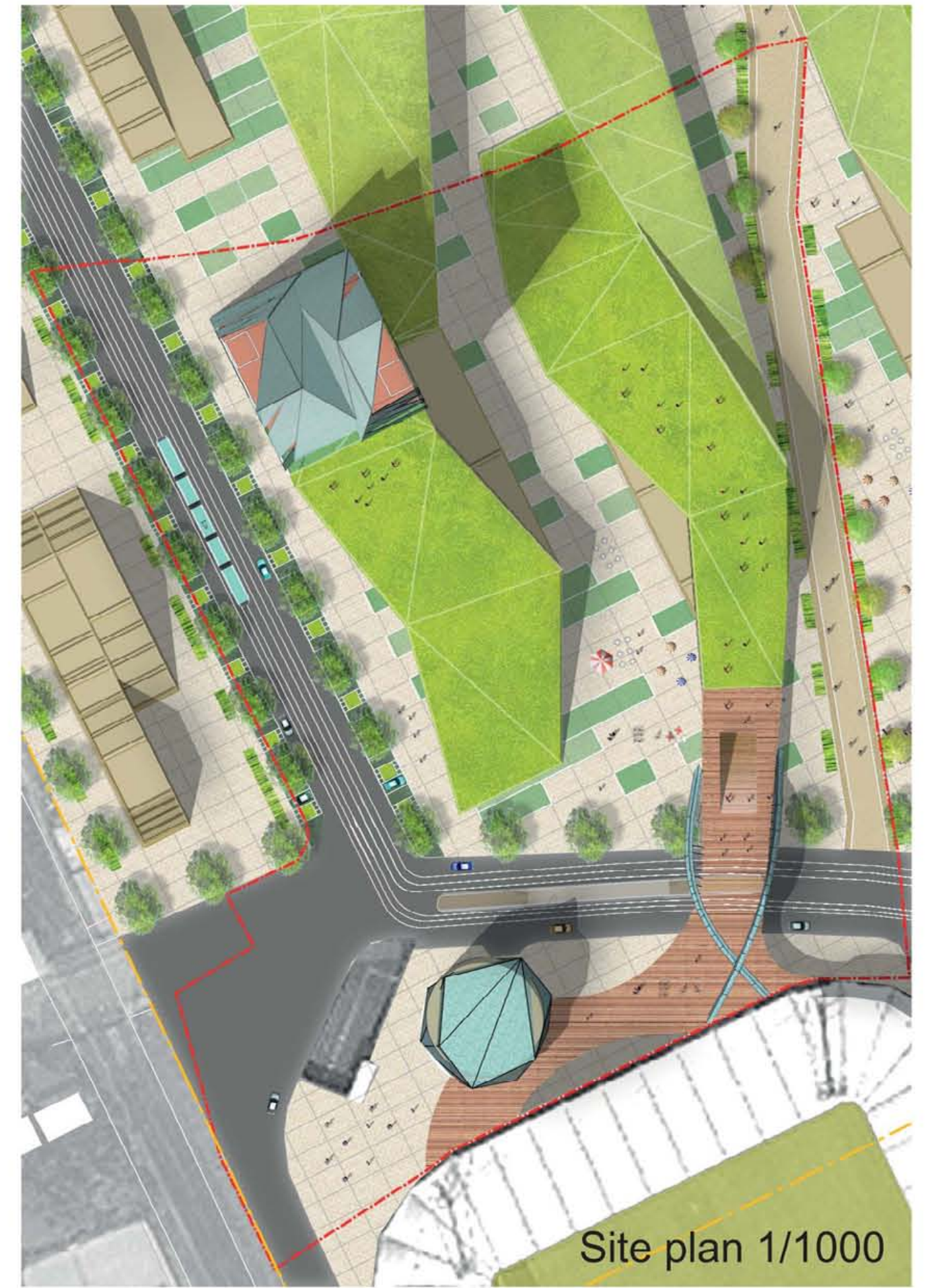


Crosse Section A -A' 1/500

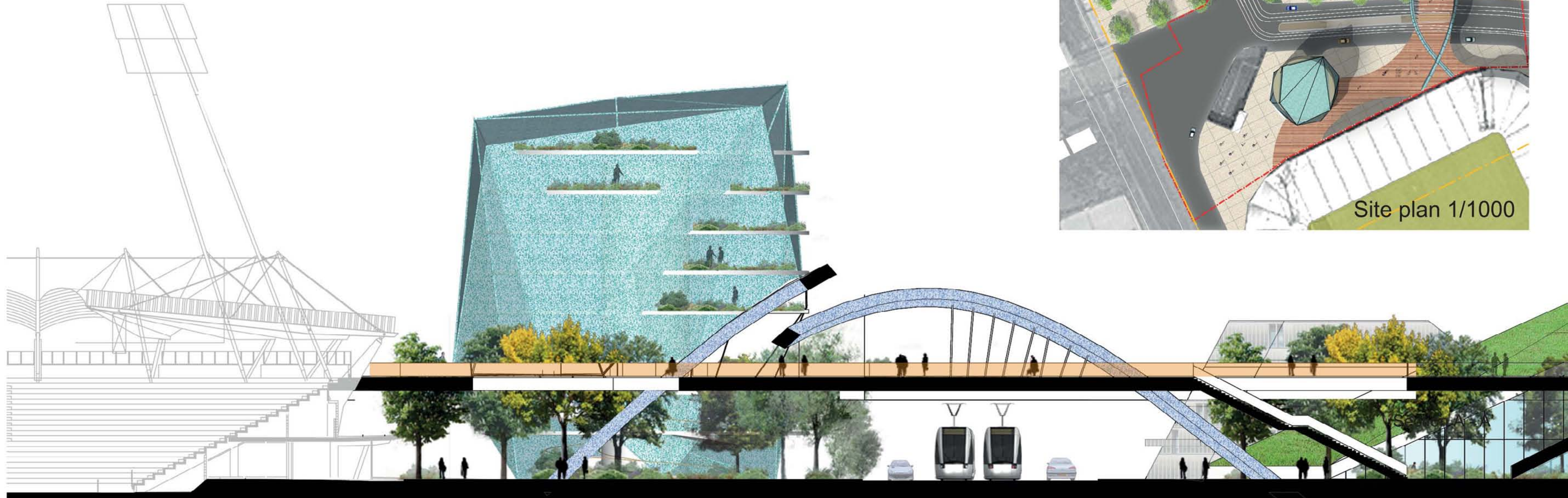
GRAZ



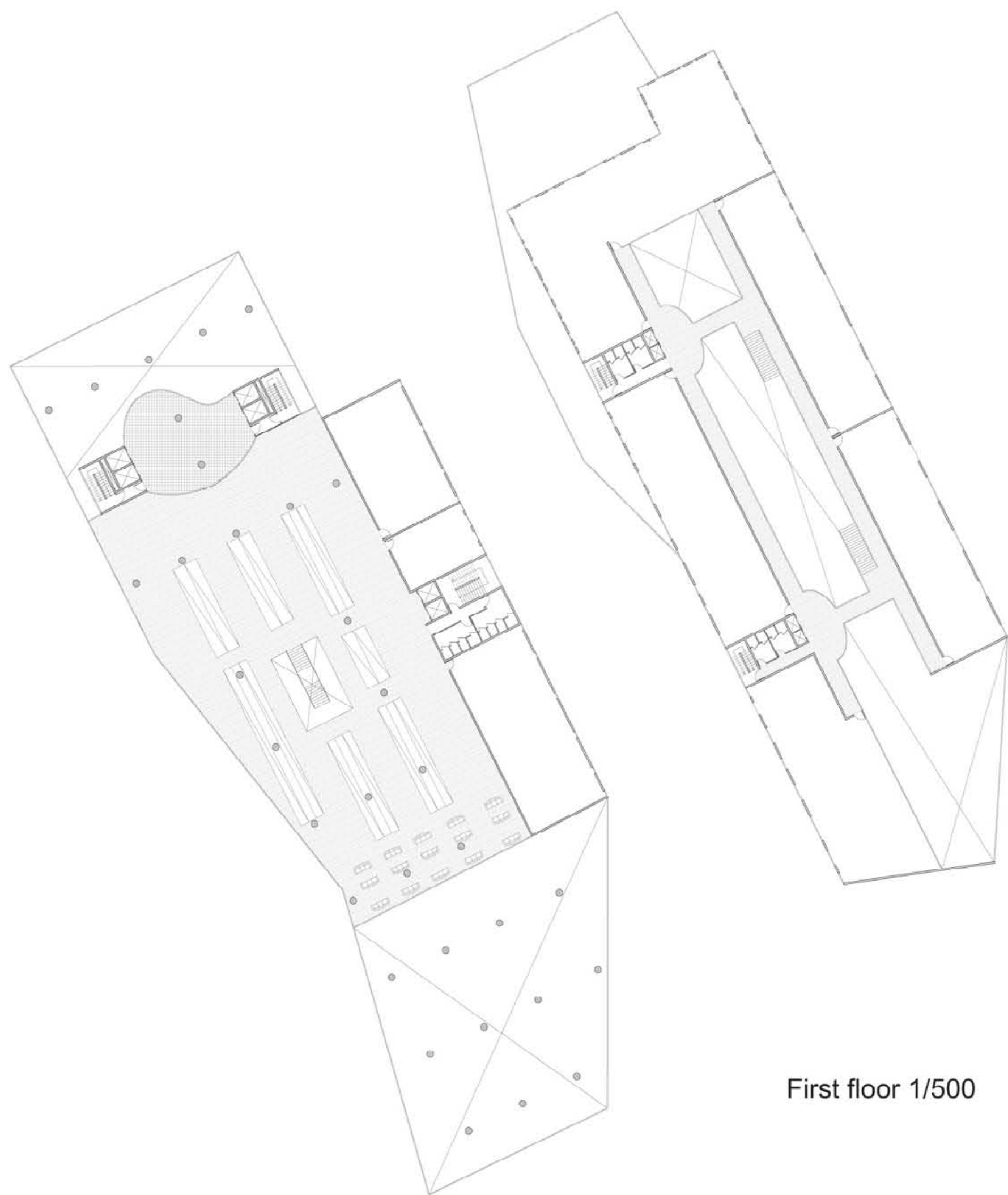
View from Ulrich - Lichtenstein - Gasse



Site plan 1/1000



Section C-C'



First floor 1/500



Ground floor 1/500

