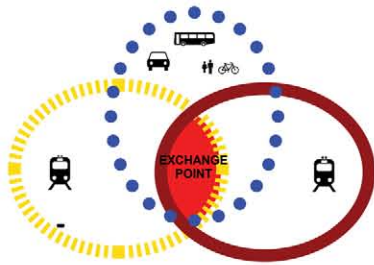
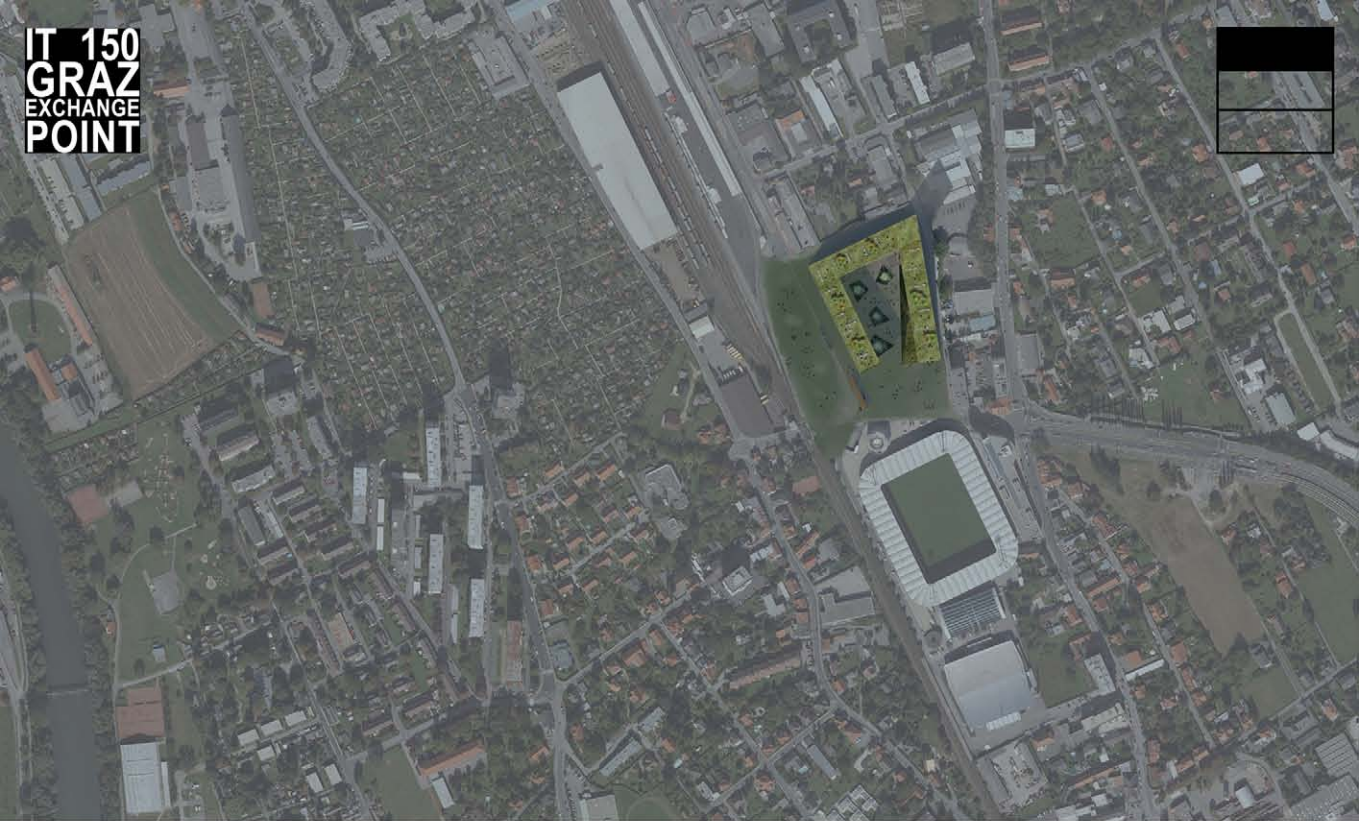
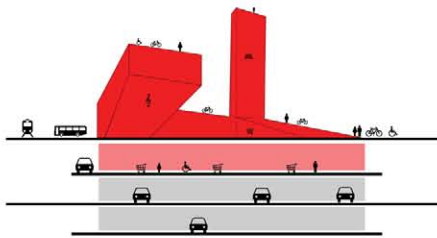


IT 150 GRAZ EXCHANGE POINT



EXCHANGE POINT



The idea put forward by project group was to maintain the continuity with the urban context, building a new crossing area which acts as a link amongst the different parts of the city featuring recreational, residential and services area. The formal and functional search of the project and its different internal purposes, has been overcome by defining specific projectual ways. From this foundation, imaging the area from the route of pedestrian paths, cycle tracks and green areas, a sort of natural contamination which constitutes a **HOMOGENEOUS TEXTURE** and allows the complete ability to cross the area, maintaining the centrality of a square that links all the variables of everyday life.

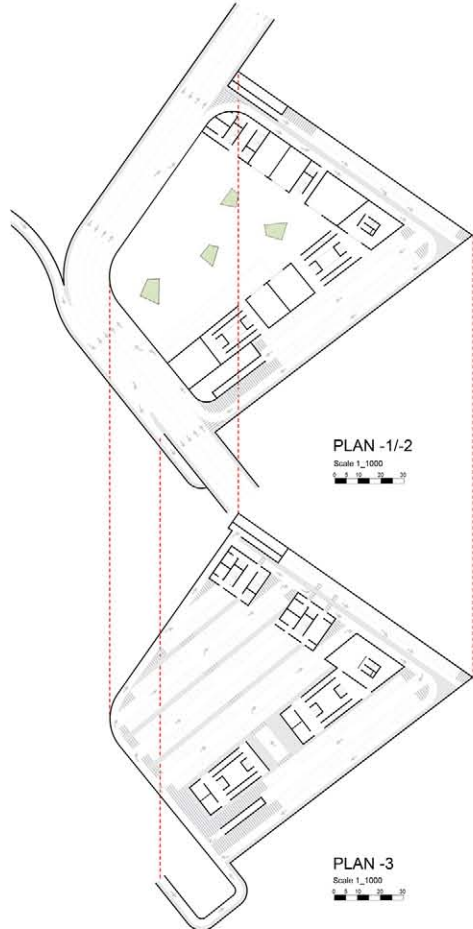
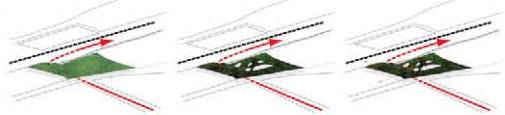
The main aim is to guarantee a **SUSTAINABLE DEVELOPMENT IN TERMS OF MOBILITY** and physical wellbeing of the people, promoting the use of bicycles or public means for any movements within the area, without denying the car traffic through an underground parking, main point for the creation of an **INTER-EXCHANGE** in this area of the city provided with all the modern facilities: sports grounds, shops, offices and residential units, all inserted into a context of "green living". The project comes into a very important context because its the access point of the city.

For this reason it is represents a **GATEWAY TO THE CITY**, with its interrelation with the suburban areas. The project aims to host various functions (commercial, managerial, residential units, general services and artistic/cultural nature) as well as squares, green areas, pedestrian areas and parking zones, always within the context of the existing car traffic.

The urban square is split into two levels. With this, we tried to create a sense of diversity, **DIFFERENT ATMOSPHERE**, maximising the area by placing the car park under the building. Access to the car park is from the existing streets, which are redesigned underground through a tunnel, whilst the higher area, the square, create the promenade and public transport such as tram and buses. With these various **LEVELS COMING TOGETHER** there is a new meeting point which can gather people coming from the park, the bus and tram stops and the streets, as well as the residents of the tower and the workers in offices and shops.

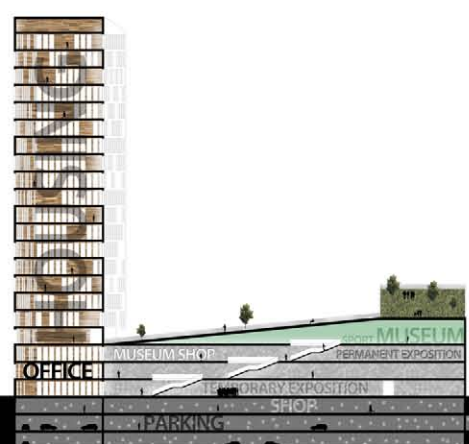
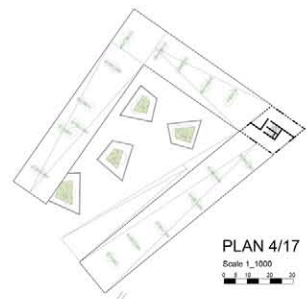
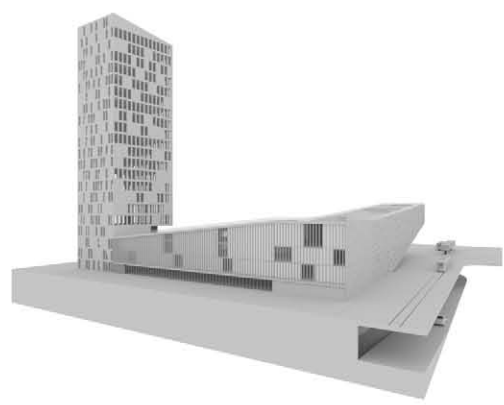
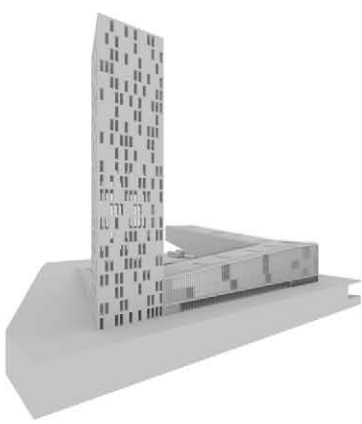
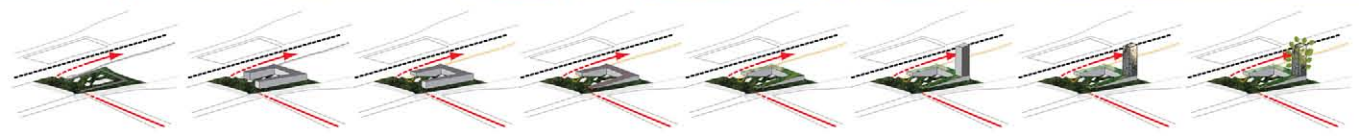
The study of light is at the core of the project with the creation of aerial dimensions that create an harmonious link between space and lighting. Through the insertion of glass lighting prisms through the underground levels we aim to convey the very aesthetic and formal sense that is usually associated with the upper floors of a building the light therefore becomes a true architectural element, with its game of shades and shapes that changes throughout the day, like an impressionistic understudy that changes the floor from dawn to dusk, making the building a vibrant, **DYNAMIC ENTITY**.

One of the assumption we started from was to work under the urban square to create further spaces, yet maintaining that physical union between the upper and lower sections, not only through the light itself but also through **VERTICAL AND HORIZONTAL LINKS**. Therefore we place a ramp that gently guides the visitor to the lower ground, removing those difficulties that would arise if the space was without these links and, mainly, without any prominent source of lighting like the one featured.



PLAN -1/2
Scale 1_1000

PLAN -3
Scale 1_1000



SECTION
Scale 1:500



SECTION
Scale 1:500



The choice of a vertical development is apt to give the maximum visual impact with the least use of land. By doing so, we are trying to organise the entire area as a sort of **CENTRAL GREEN SQUARE**, freeing as much as possible the site from the use of concrete and leaving space to an urban square that highlights the importance of nature in the everyday living. Visually, the tower, placed on an angle of the C-shaped building is a very strong element that marks the **ACCESS TO THE CITY** and to the whole area involved in the remodelling. The direct access from the tower to the square is very interesting, a continuous ramp that brings onto the same level both visitors and residents of the tower, but also the office workers and shoppers. It basically aims to reinvent the cover of the volume as a **PROMENADE AND GATEWAY** to the areas aforementioned. On the lower ground and ground floor, there are shops, whilst on the first floor and alongside the vast majority of the serpentine there are the offices. A diverse **SUCCESSION OF PUBLIC SPACES** create the promenade, from the tram station to the top of the building which

would be a perfect window for art exhibits or cultural events. The external chromatic finishes are given by a composition of soft tones, in order to increase the **INTEGRATION** of the project with the urban landscape. The collocation of the internal square will give a sense of accessibility but also the chance to the general public to enjoy this space with the integration of green areas, paved paths, and re-organising the transit area and the parking area and finally by placing the lines of car traffic underground and creating a flight of stairs that leads to the shops but also to the wide park through stairs and escalators. The facades cover is characterized by few materials, **WOOD** for the residential tower and the internal walls of the C-shaped element whereas the other facades feature are natural elements and glass. In this way we can give to the building a strong message in terms of **SUSTAINABILITY**. This project aims to be revaluated by the community under new basis: it aims to be a **POINT OF REFERENCE**, a qualifying element to the area, a new impulse to smooth and reconstruct the fragmented urban area that surrounds it.

The shape of the two separate entities, the tower and the C-shaped building, is suggested by the necessity to separate offices and shops from the residential units, though they are linked by the flat zone of the ground floor with common spaces for public purposes. The building has a constant growth in volume to the point of appearing suspended in the air with a big overhang that seems to recreate a big terrace, a lifted green zone, an area which would not have been likely utilised but now becomes multifunctional zone. Not only is it a pleasant **PANORAMIC AREA** from which to admire the whole architectural project and see the volumes emerging from the square, but also acts as a pedestrian path, a perfect integration with the surrounding spaces and the various functions the building will host inside. The shape of the building is a representation of the uses and the activities happening inside.

