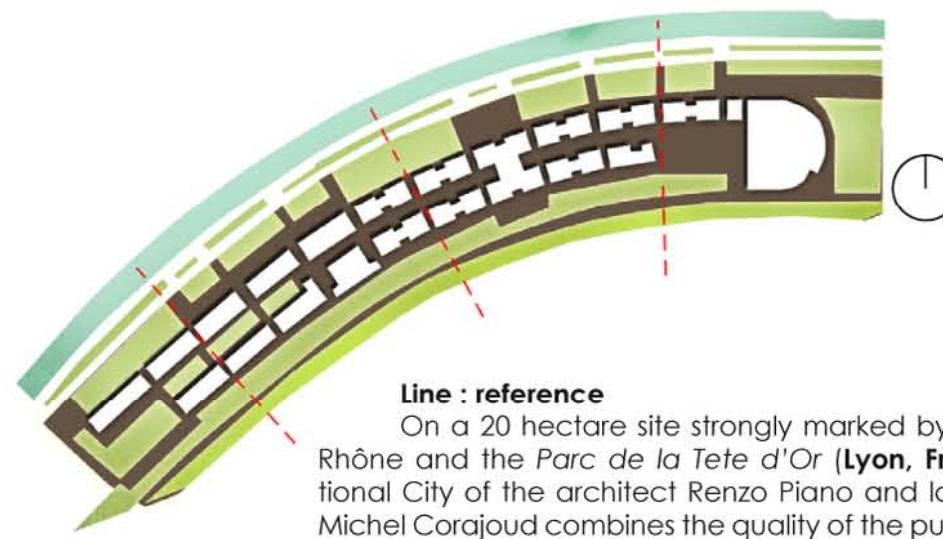
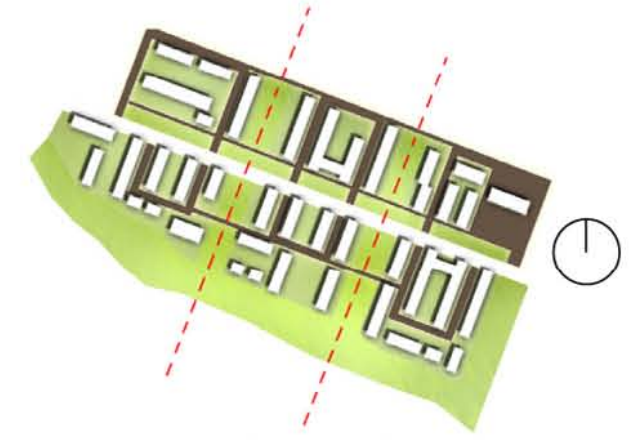


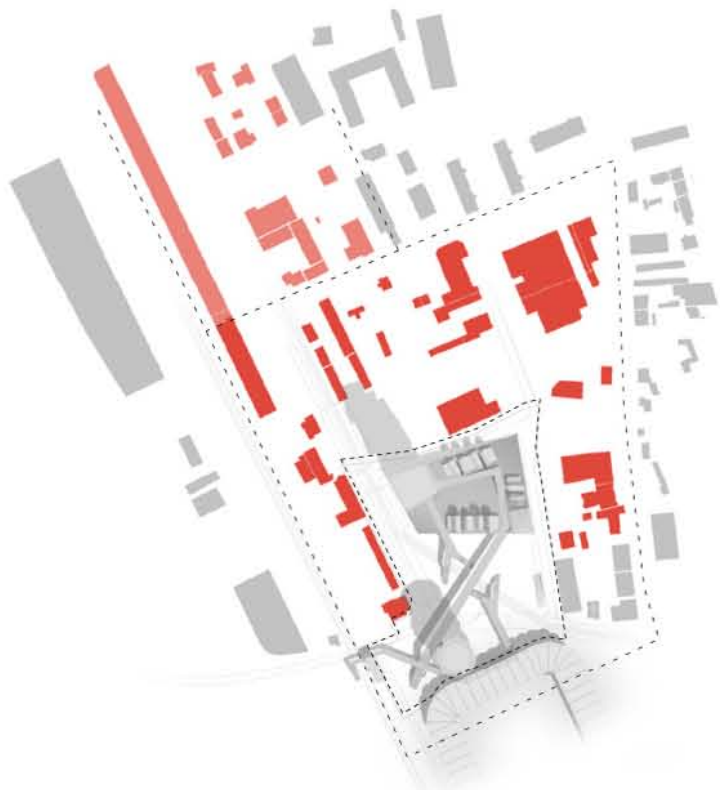
**Points  
Line  
Surface** Planning concept 1.5000



**Line : reference**  
On a 20 hectare site strongly marked by two elements, the Rhône and the Parc de la Tête d'Or (Lyon, France), the International City of the architect Renzo Piano and landscape architect Michel Corajoud combines the quality of the public spaces with the territory. The natural landscape draws a parallel line to the river and forms an urban boulevard.



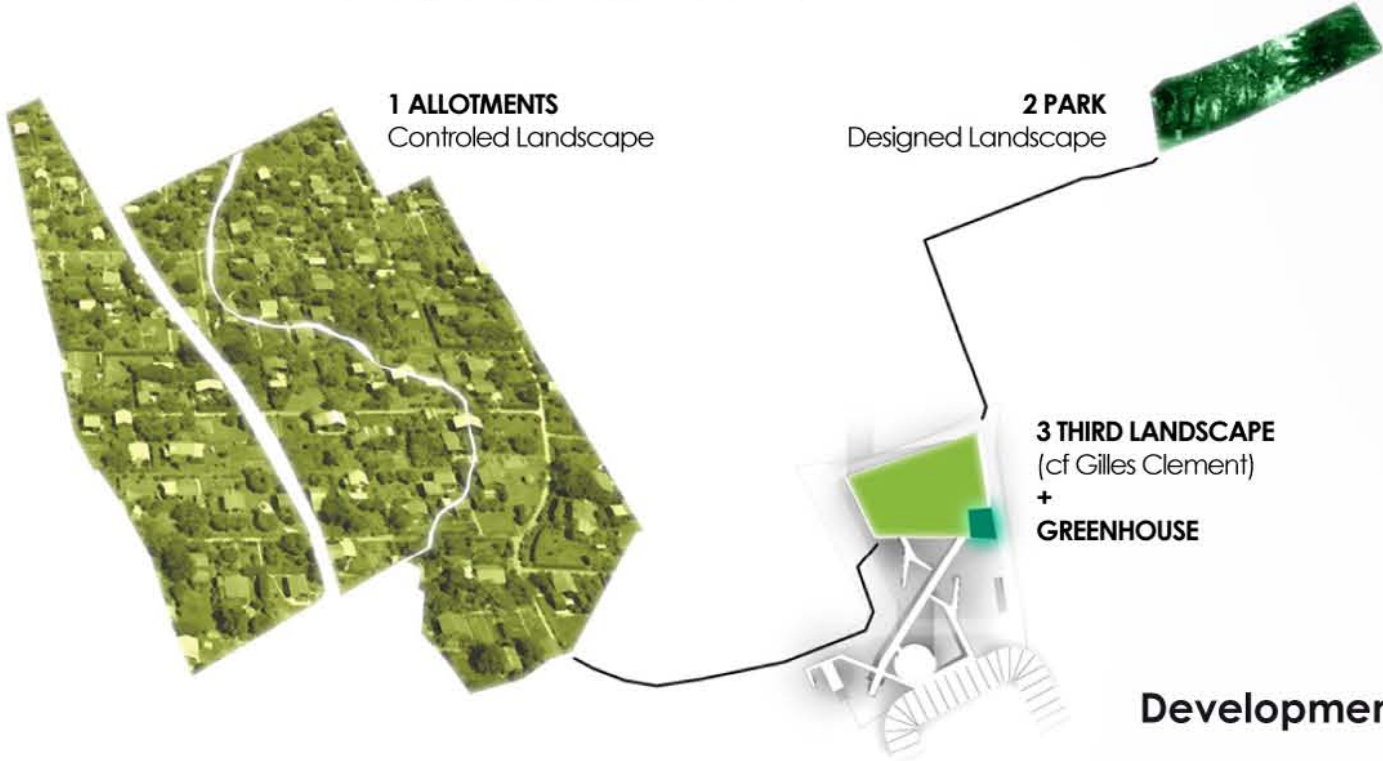
**Surface : reference**  
On a restructuring land, Vaubenalle in Freiburg, a major urban operation was designed in 1996 with a sustainable development approach. To preserve space for housing and public places, the area of the cars has been reduced in favor of the landscape.



**Mutability**  
Most of activities of the industrial buildings on site are not adapted to a denser context. The displacement of these activities liberates a large area suitable for the creation of a new urban pole. Housing buildings on site are preserved.

**POINTS** are the tower which bring a symbolic high rise skyline.  
**LINE** is the densification of Conrad-von-Hotzendorf Street to create a real urban axis with mid-rise building.  
**SURFACE** is the development of a perurban pattern with sustainability benchmarks.

**Third landscape** concept 1.5000



**Development stages** Site plan 1.2000

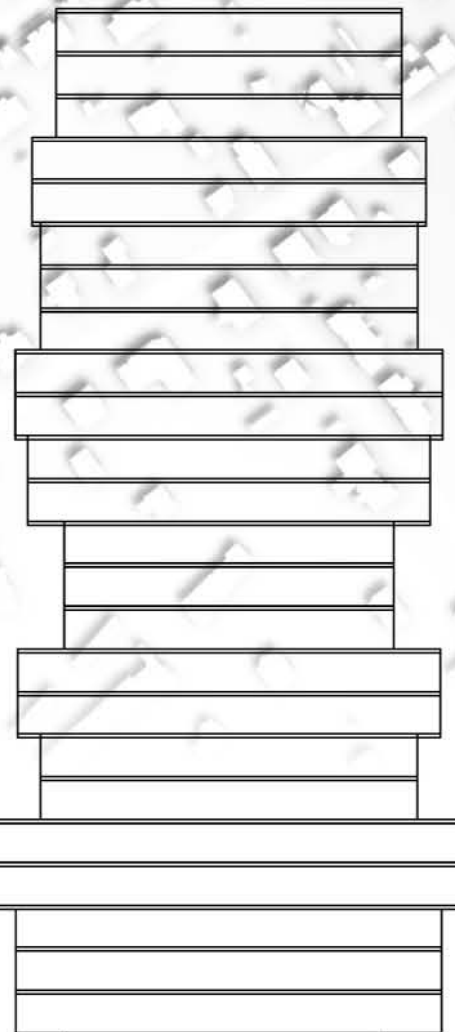
0 10m 100m

**Sustainability**  
is about preserving the biodiversity, along with tending to self-sufficiency. The response to the first purpose is to let a large part of the tower base as a field of grasses, and to let it evolve by itself. The second aim explains the creation of an important greenhouse, which can be the place of cooperative work for the tower inhabitants.

Stage C

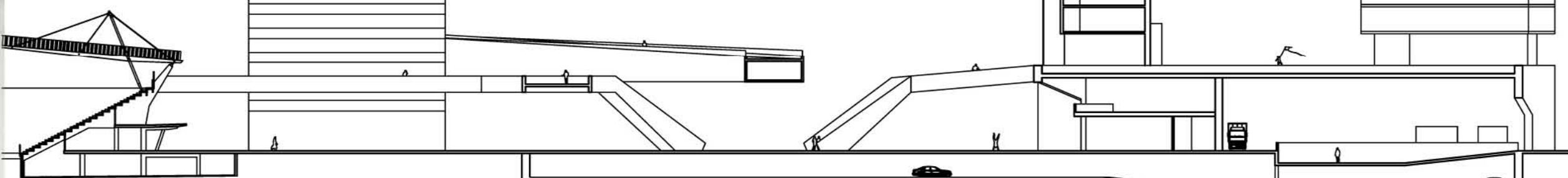
Stage B

Stage A



**North-South paths** Longitudinal section 1.500

0 5m 20m



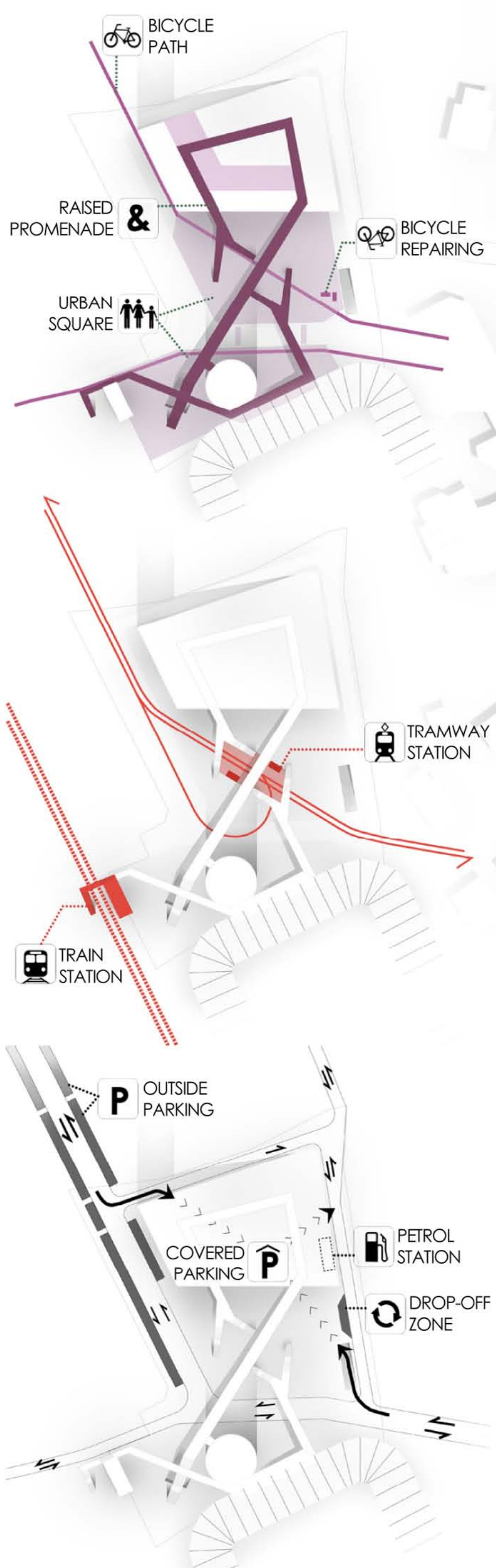
Urban landscape Site plan 1:1000



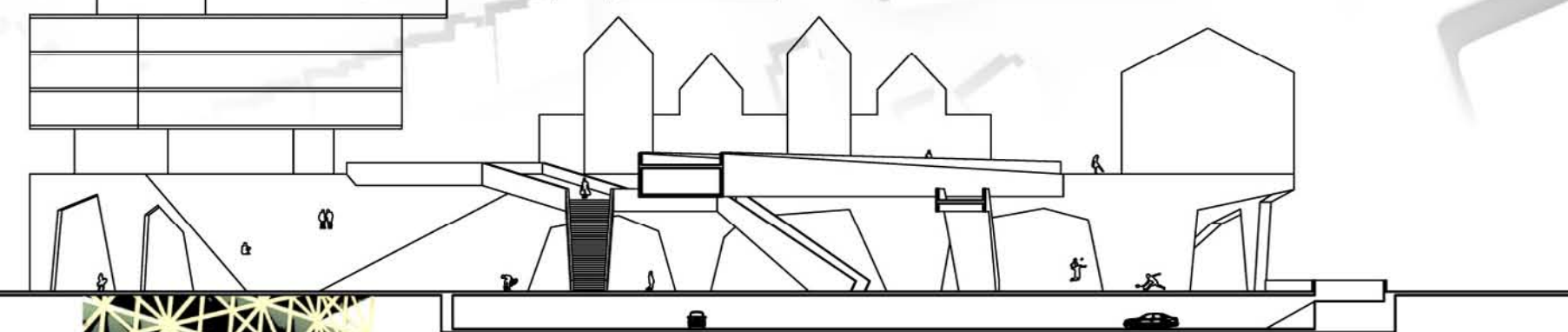
Road hierarchy Strategic site plan 1:10000



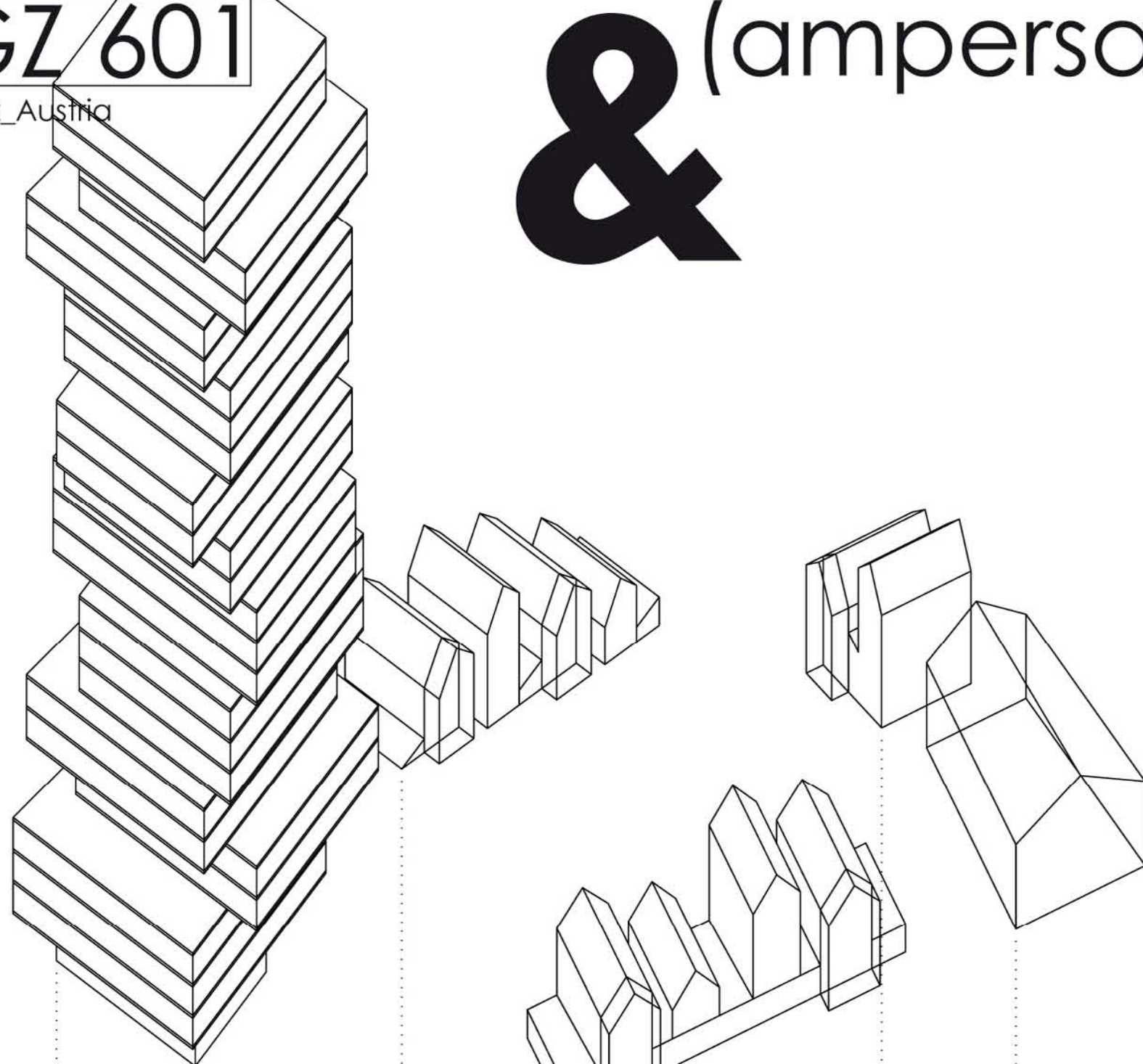
Network components Site plan 1:2000



TRAM station Cross-section 1:500

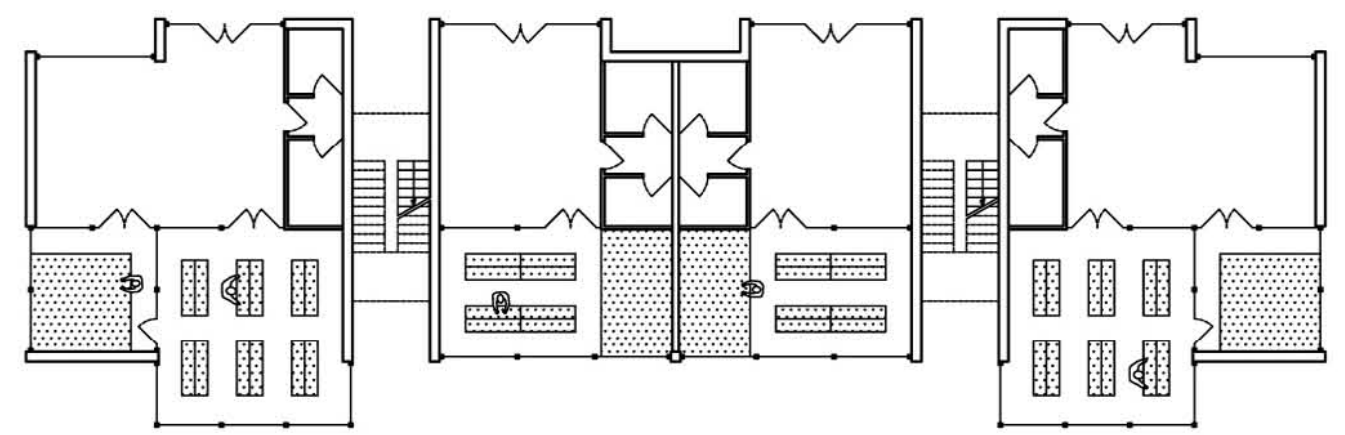


The organization of the covered parking moves the cars traffic away from the main axis, making the square limits safer for pedestrians. The existing petrol station is also moved to a minor road.



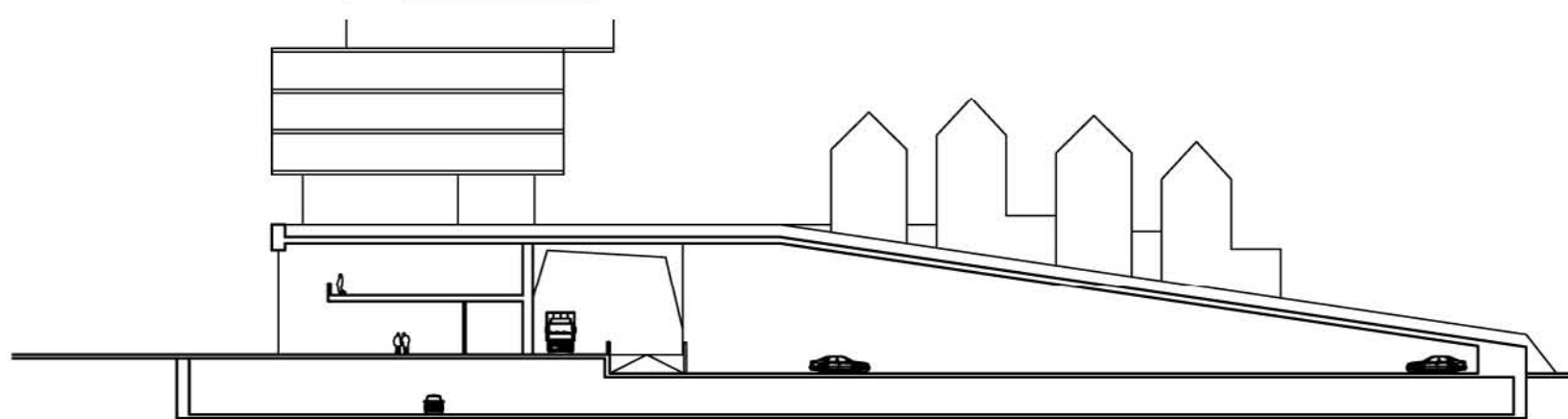
Marketplace shops Plan 1.200

0 2m 10m



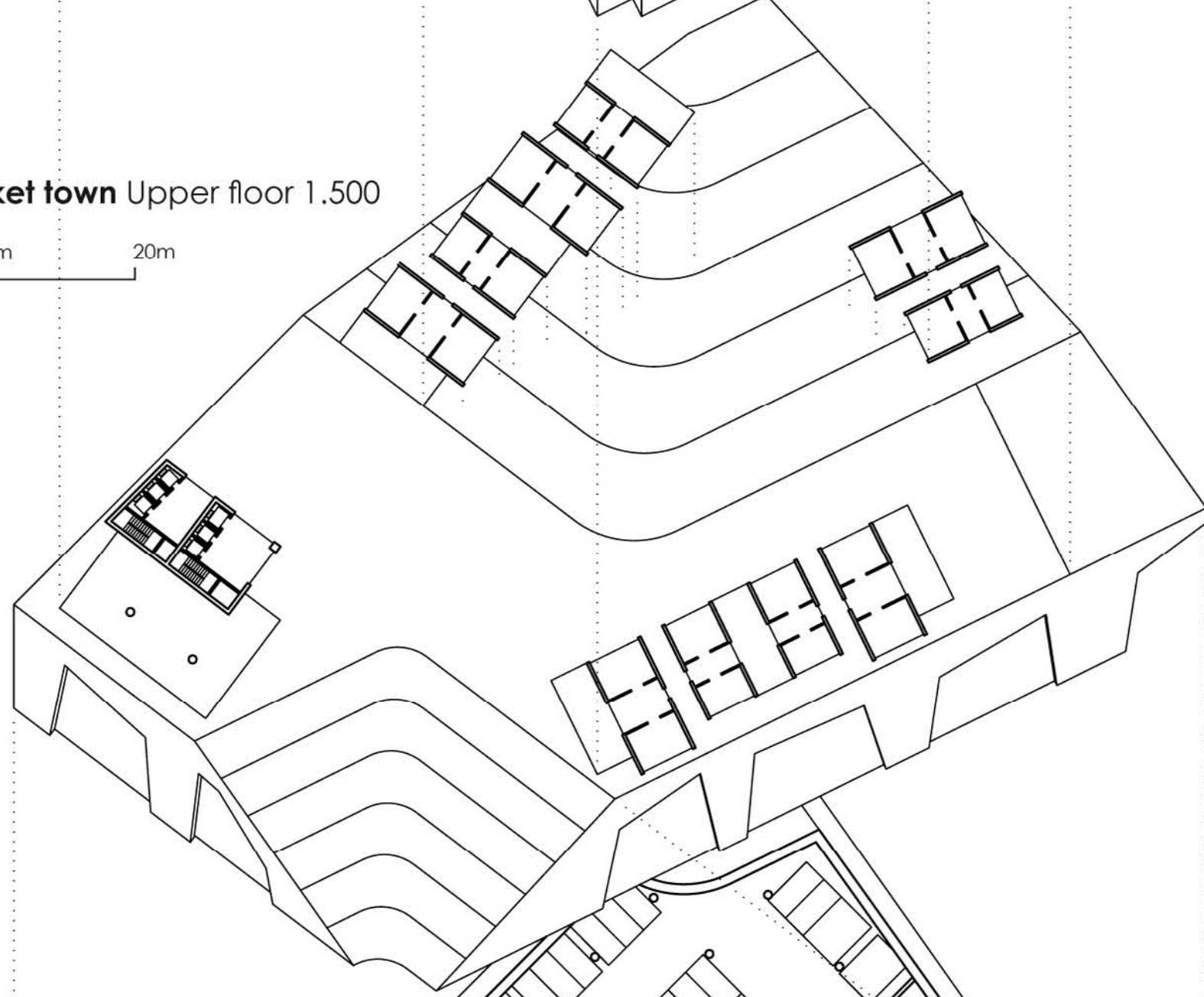
Building relief Cross-section 1.500

0 5m 20m



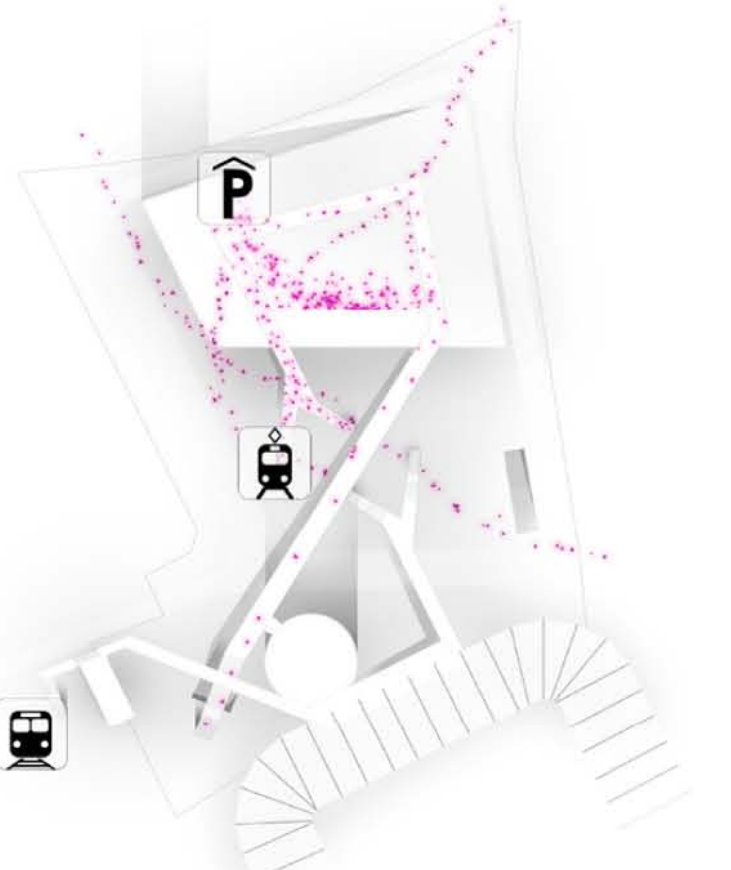
Market town Upper floor 1.500

0 5m 20m



Urban Hub Ground floor 1.500

0 5m 20m



**MORNING EVENT**

The Bio-market allows to sell the local production of greenhouses, as well as the production of nearby allotments. Mainly dedicated to the inhabitants of the surrounding, it also has an easy access from urban transports.



**EVENING EVENT**

The system is based on the multiplicity of choice. For each mean of transport there is an easy and safe path. The raised promenade distributes the flow of pedestrians while the square receives the less hurried people who want to use the kiosks.



- SUSHI
- KEBAB
- FRENCH FRIES
- LOCAL CUISINE
- BICYCLE PARKING**
- BICYCLE REPAIRING
- FOOTBALL FAN MAKE-UP
- NEWSPAPERS
- SHOES SHOP
- SHOES REPAIRING
- URBAN SPORTS STORE
- TRANSPORT TICKETS
- & MORE

**CONTAINERS AS KIOSKS**

Activity is always evolving. It adapts to the context. The square is able to receive a lot of kiosks - depending of the attractiveness of local events - since kiosks can move. This flexibility allows, for example, the organization of open-air concerts.

