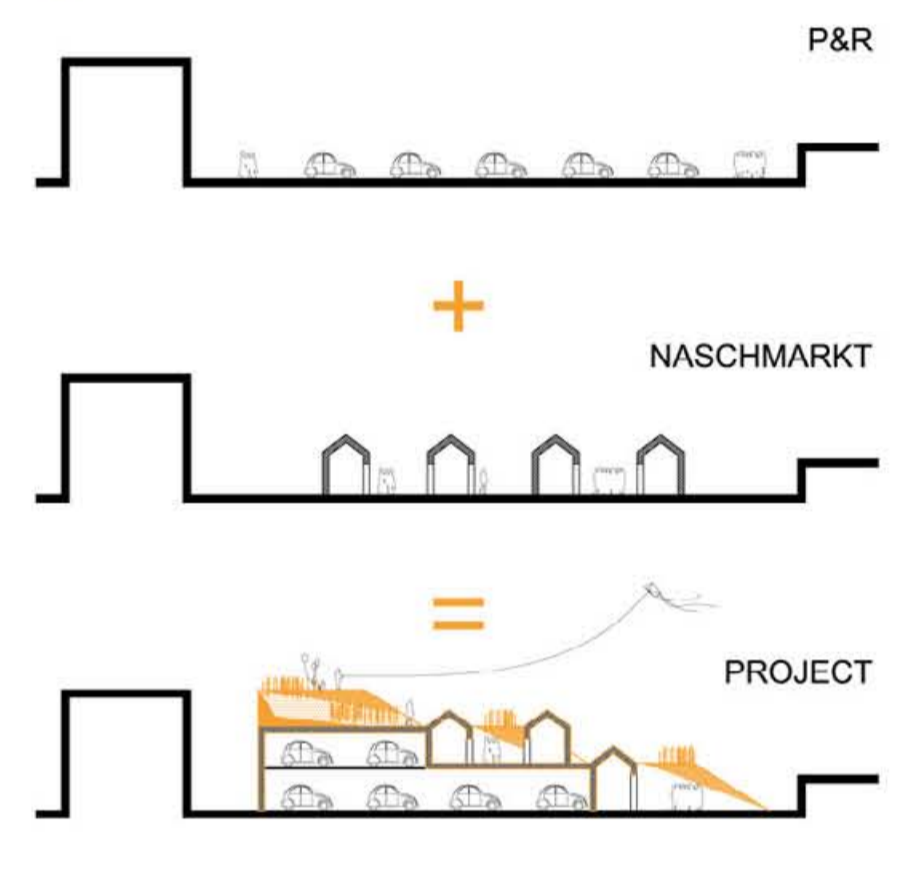




VIEW FROM Conrad-von-Hötzendorf-Straße

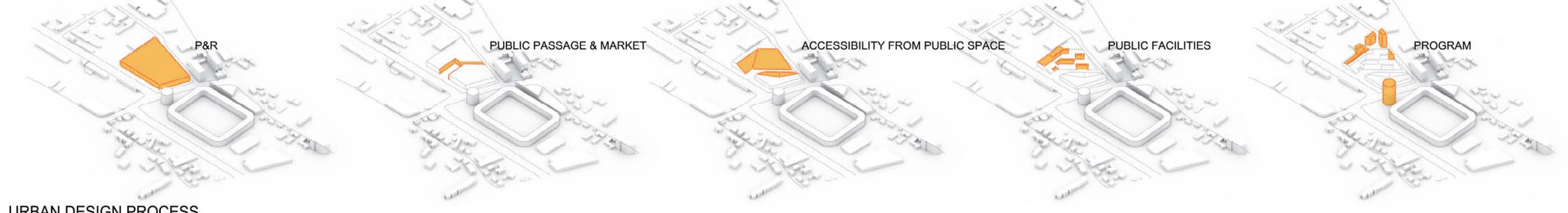
flying carpet



« Flying carpet » is a continuous urban connector conceived as a public amphitheater. It is an intense combination of food, leisure, living, parking, mobility exchange and facilities. The topography is used as a tool to change the site constraints into a playful experience, and link easily the transport stations and the stadium access, at different levels, allowing to cross over Ulrich-Liechtenstein-Gasse. The plaza and hills are also used as an access for facilities located under his rice-field like wooden plateaux : a Park & Ride for 800 cars, the most important in the south of Graz, a bike park, a shopping center accessible from Ulrich-Liechtenstein-Gasse, cafes and various equipments for passers-bys and neighborhood. The building is fully integrated to enhance and use the synergetic possibilities of the different functions and flows. At the street level a nachmarkt connects Conrad v. Hoetzendorf Strasse and Johann Sebastian Bach Gasse during day and evening. Similar to the one in Wien, it is a space for social interactions, shopping or simply a shortcut in the urban area. The surrounding slopes are places for appropriation, sightseeing, interstitial activities such as small shops for take-outs, cafe terraces and outdoor cinema. A scene and a stage. The generous space of the slopes is ideal for coexistence of activities and are adaptable to the various flows of passengers in transit. Conrad v. Hoetzendorf become a large green boulevard, facing the Tower besides the undulating facade of the building. The tram station is the main entrance of the site on that side, near the nachmarkt. The bus stations are located on two squares on both sides of Ulrich Liechtenstein Gasse. Along the UPC Arena, the future S-Bahn station will face the unrolling topographic curves. A new entrance for UPC Arena. The UPC Arena is directly connected to the platform at mid-level, allowing the visitors entrance and exit above the street and through the nachmarkt and kiosks, or directly in the direction of P&R, transport stations or bike park. Small units of living buildings are facing south at the top of the northern hill. Separated from the public space by a slope, their cores are directly connected to the parking and the entrance on Johann Sebastian Bach Gasse. Their shape with logias and wooden structures allow low energy consuming. The Liebenau Tower will be the new landmark of Graz at its south side, and the anchorage of the « Flying carpet ». Reusing the structure of the former stadium tower, the tower is expanding his wooden structure onto it. A collective garden at each floor creates a green turning crack on the double skin facade, made of thin lamellas of wood. A new icon for Graz -south, an intensification of the city at its door.

CITY OF GRAZ & TRANSPORT NETWORK

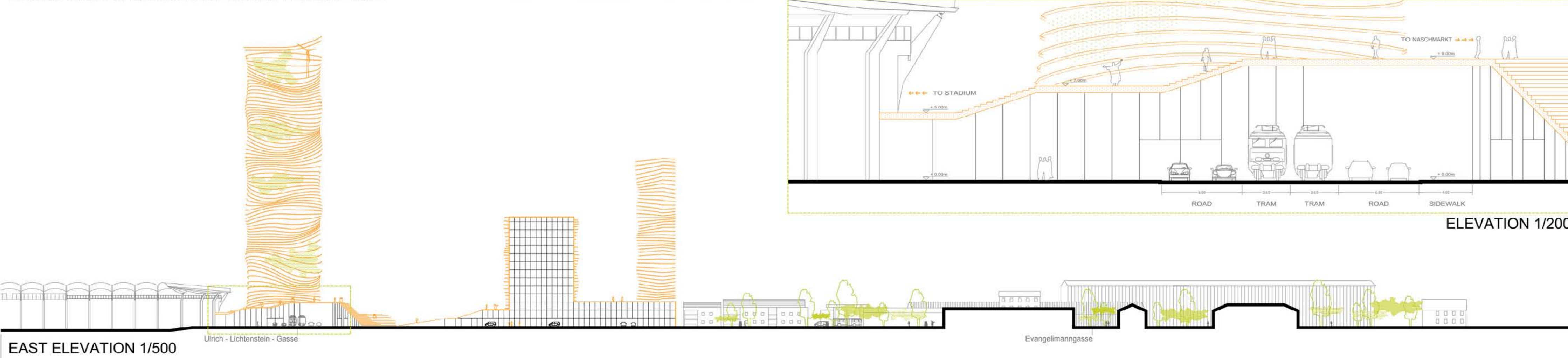
URBAN SCHEMA

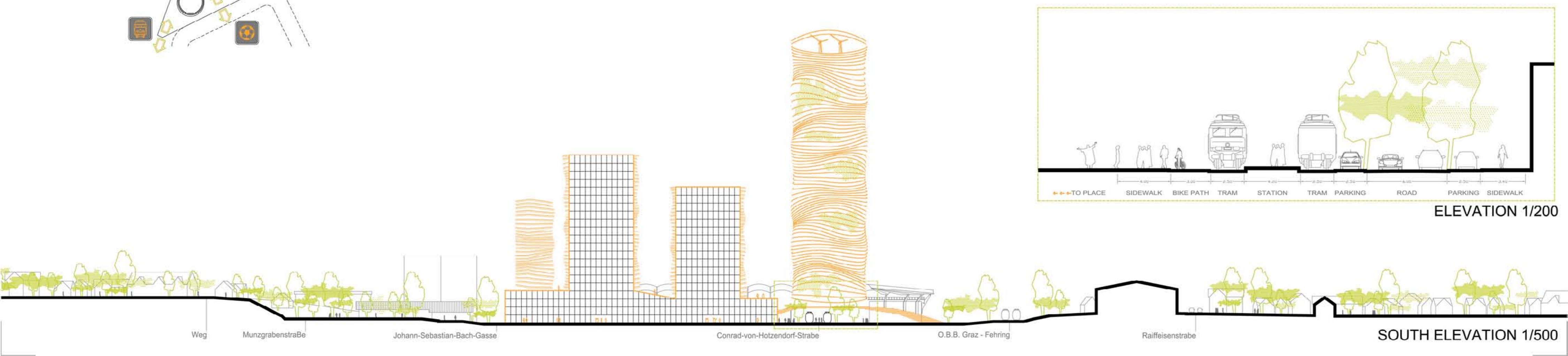
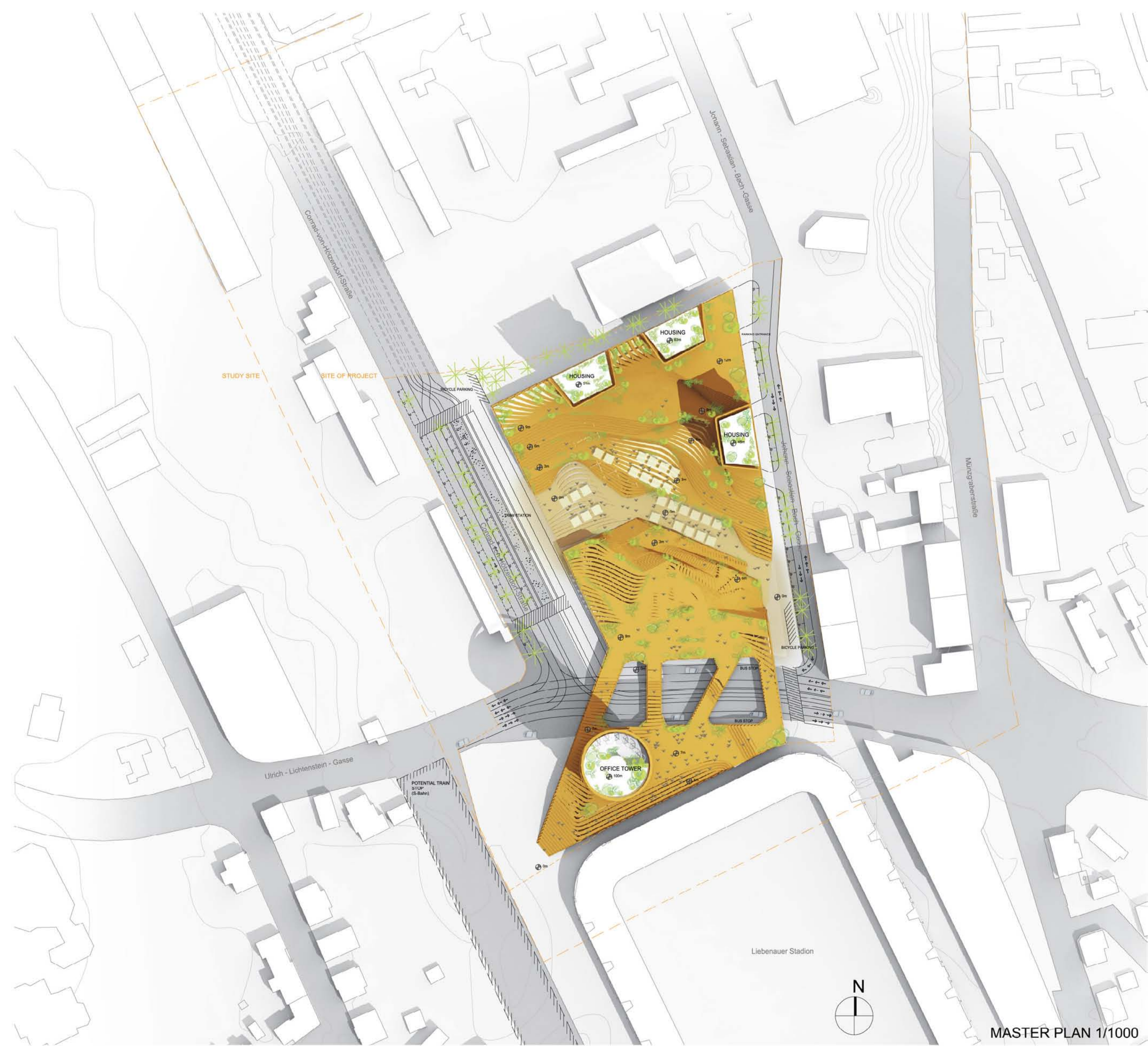
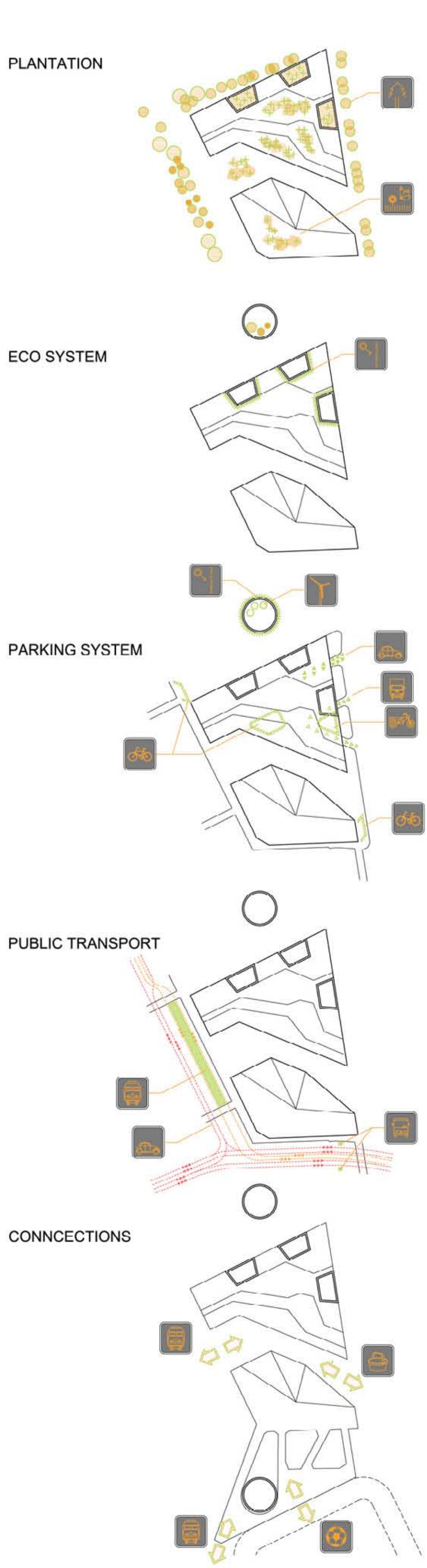
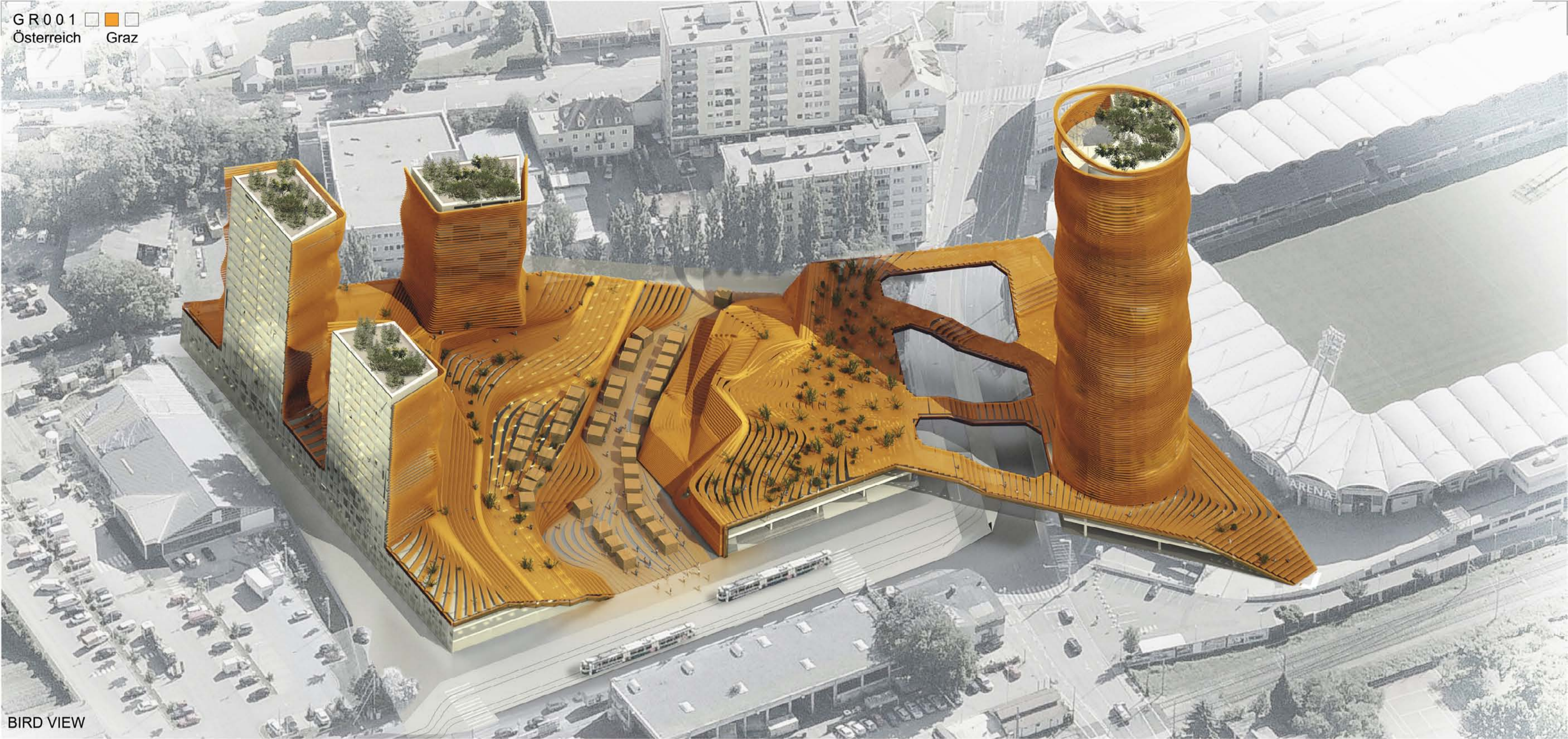


URBAN DESIGN PROCESS



USE BY THE POPULATION AT THE DIFFERENT TIME



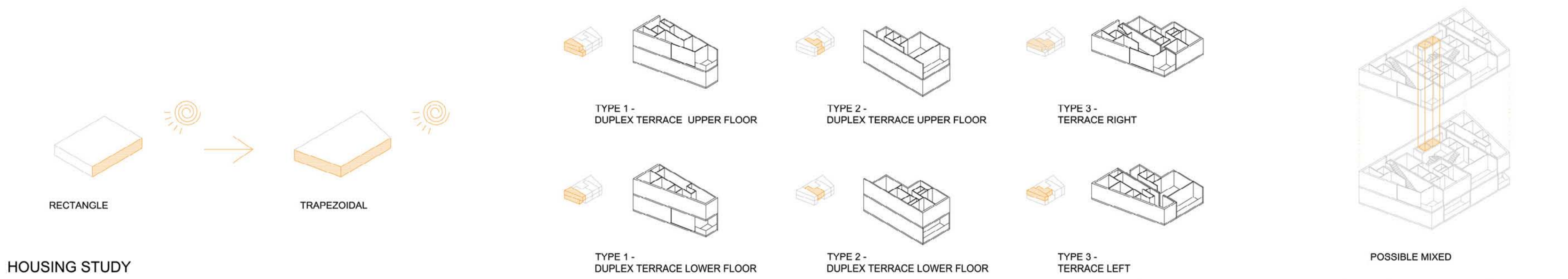




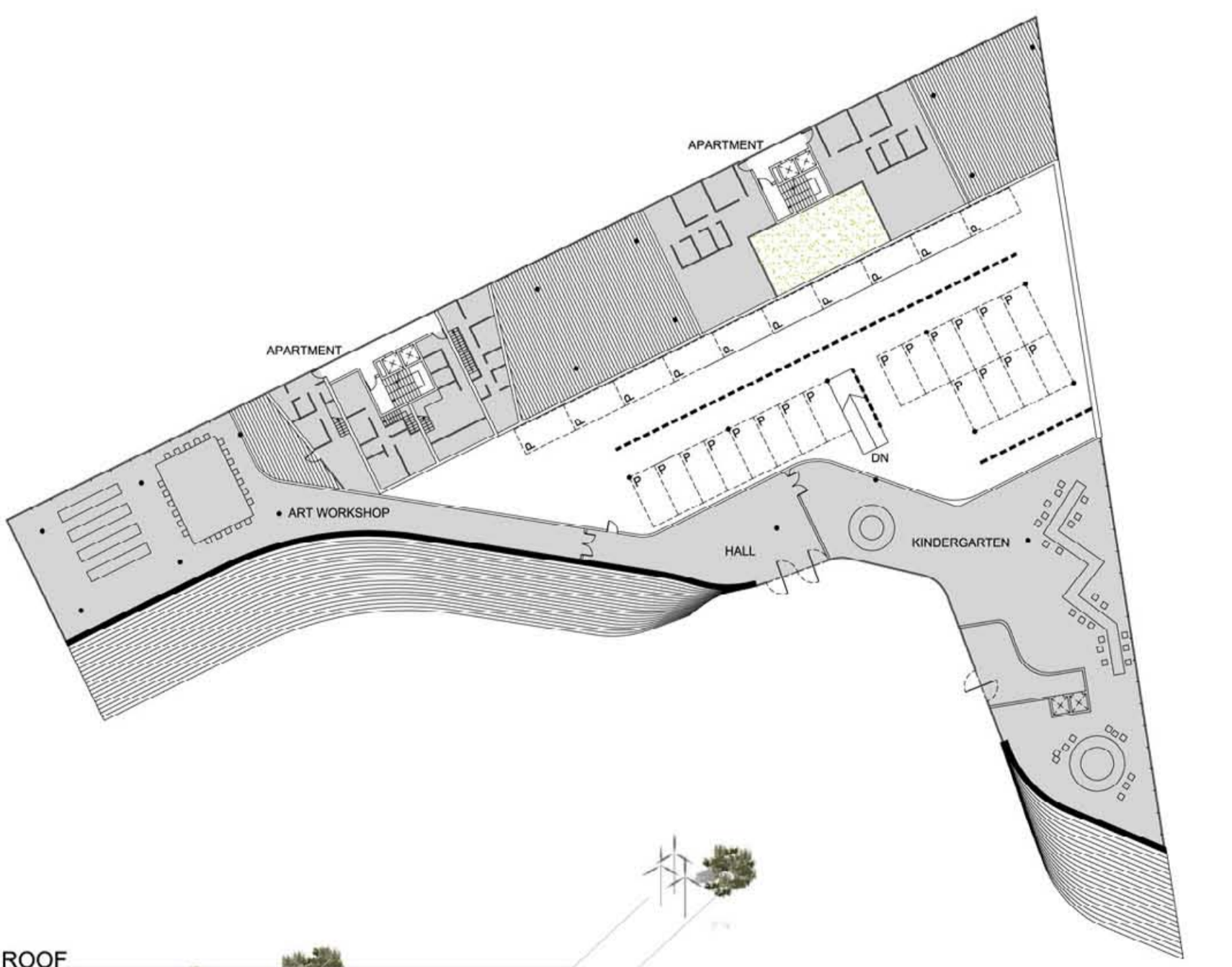
VIEW FROM Conrad-von-Hötzendorf-Straße



INERIEUR VIEW - MALL

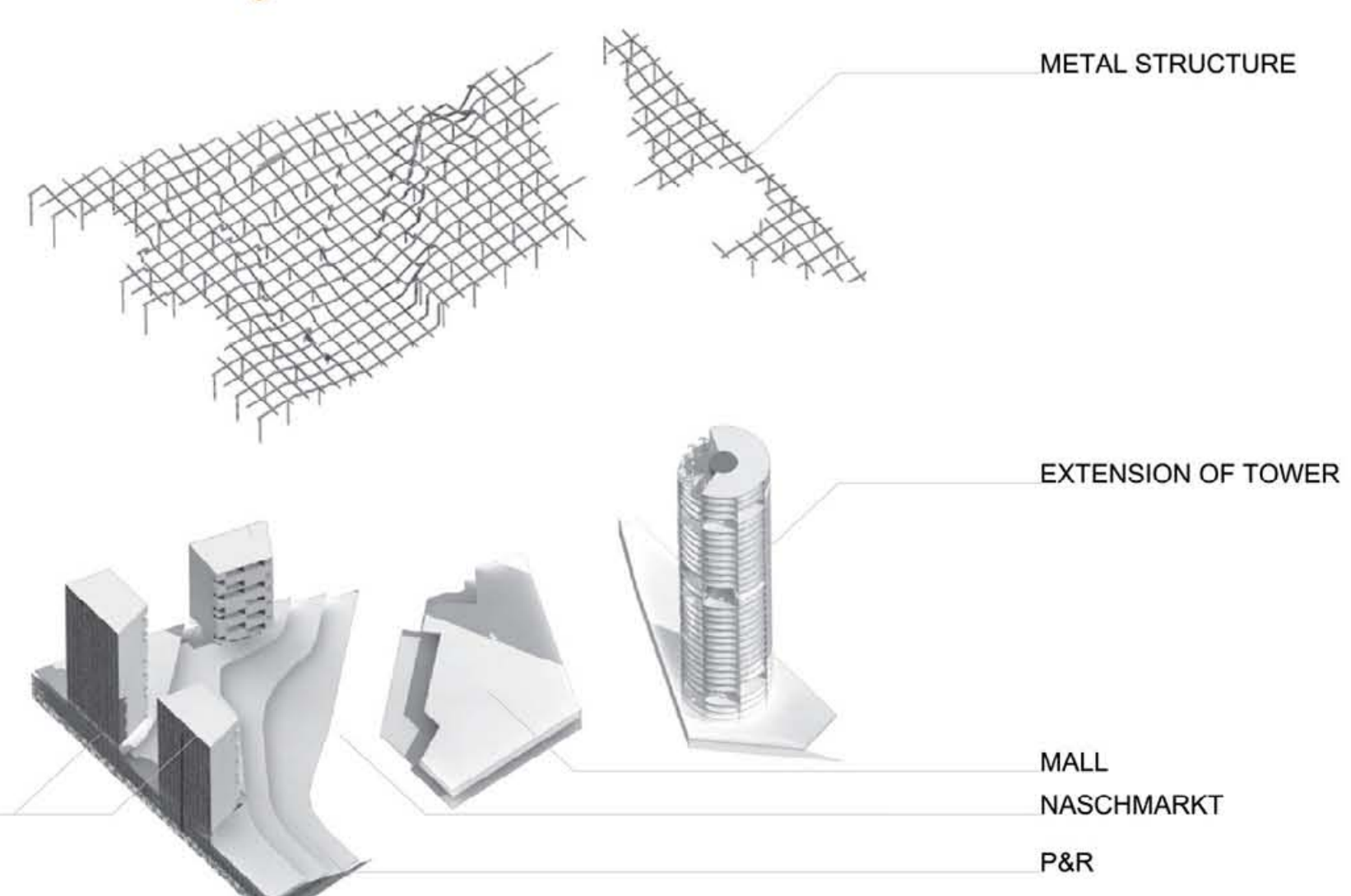


HOUSING STUDY



SECOND FLOOR PLAN 1/500

- WIND TURBINE ON THE ROOF
- PLANTATION ON THE ROOF
- LANDSCAPE ON THE HILL



ARCHITECTURAL COMPOSITION



GROUND FLOOR PLAN 1/500