

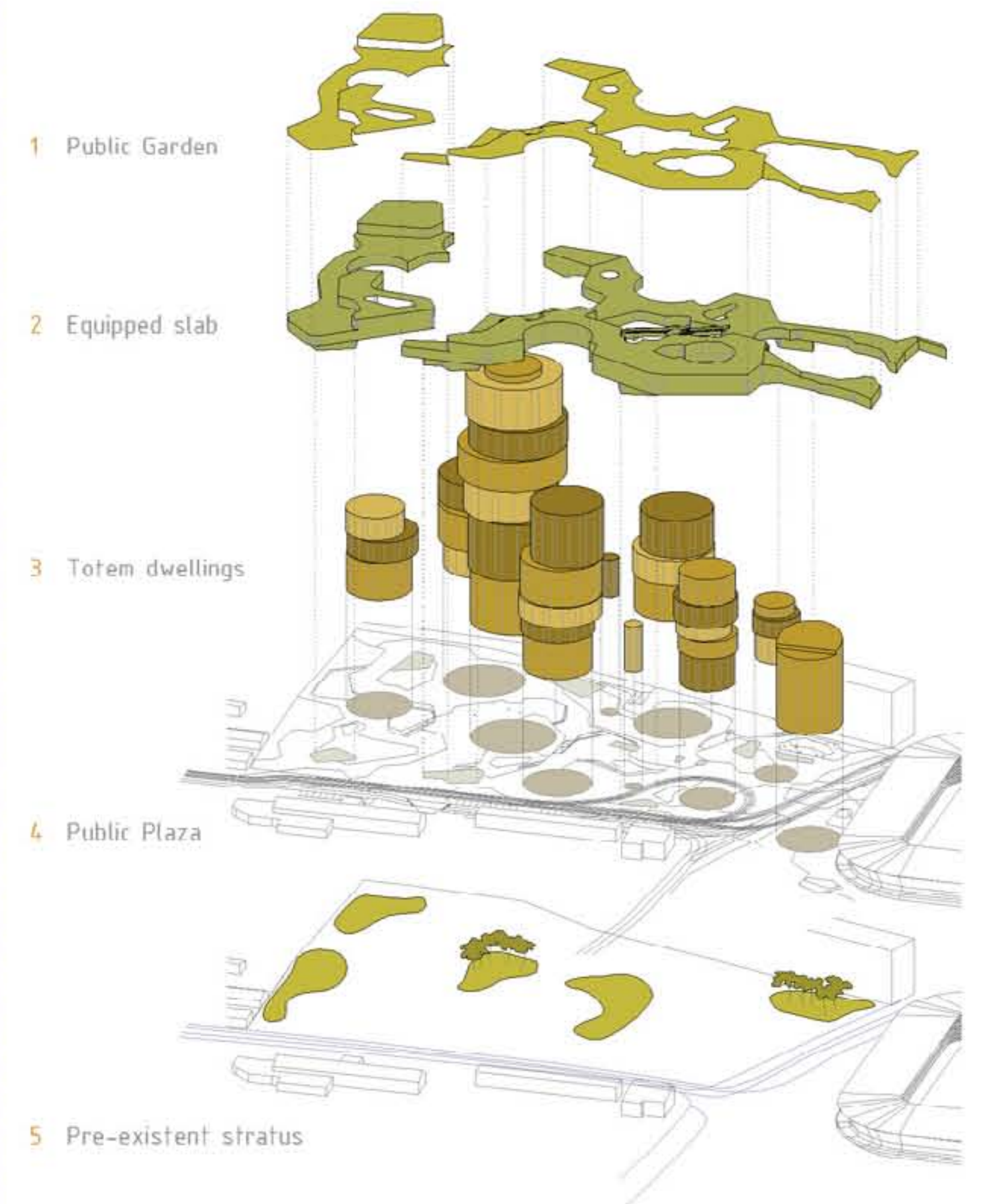


OVERLAPPING LANDSCAPE 1

urban ideas

The project is based on a double way to analyse the landscape. On one hand, the **structure of the landscape**, meaning the weaves and layers compiled over the territory in time, both the natural and the man made ones. On the other hand, the understanding of the landscape of our cities and territories is influenced by the **meanings** we give them as its occupants.

Landscape Estructure



How to create a urban space with a mixed use environment in wich different rhythms, different activities and different intensities may converge? a place were people can gather together in public events, a place with demographic density, a place were pedestrian and cycling mobility is a priority and an eco-friendly place were nature is respected.

- 5 Pre-existent natural stratus.** The pre-existing trees are conserved in their most part, keeping a layer of unpaved soil in the new city. **Pre-existent mobility network.** The north-south axis leading towards the center of the city clearly marks the directionality of the intervention. The urban and spatial qualities of this connection are altered to form a pedestrian friendly boulevard.
- 4 Public plaza.** The ground floor stratus works as a public square like space. **Pedestrian and cycling mobility** is provided while different open public spaces may absorb different public events in a flexible way.
- 3 Totems dwellings.** A net of disperse circular buildings provides the place with **density**, generating flows, activities and movement in the ground floor. They also work as a **referential point** that may be seen from far away in the city.
- 2 Equipped slab.** This layer organizes and qualifies the public space of city generating different spatial possibilities for the urban space. It is designed to be a tool for **communications and mobility**, creating **interactions** between different uses and transportation vehicles.
- 1 Public Garden.** The roof of the slab is a public garden connected with the plaza space and with the different uses established in the slab and the totem buildings.

Landscape Meanings

Considering the history and **identity** of the city of Graz we overlap different layers over the pre-existent stratus, providing the place with the functions, the urban qualities and the identity it lacks.



equipped slab. The equipped slab provides a modern element in the collage that represents the avant-garde feeling in new interventions in Graz.



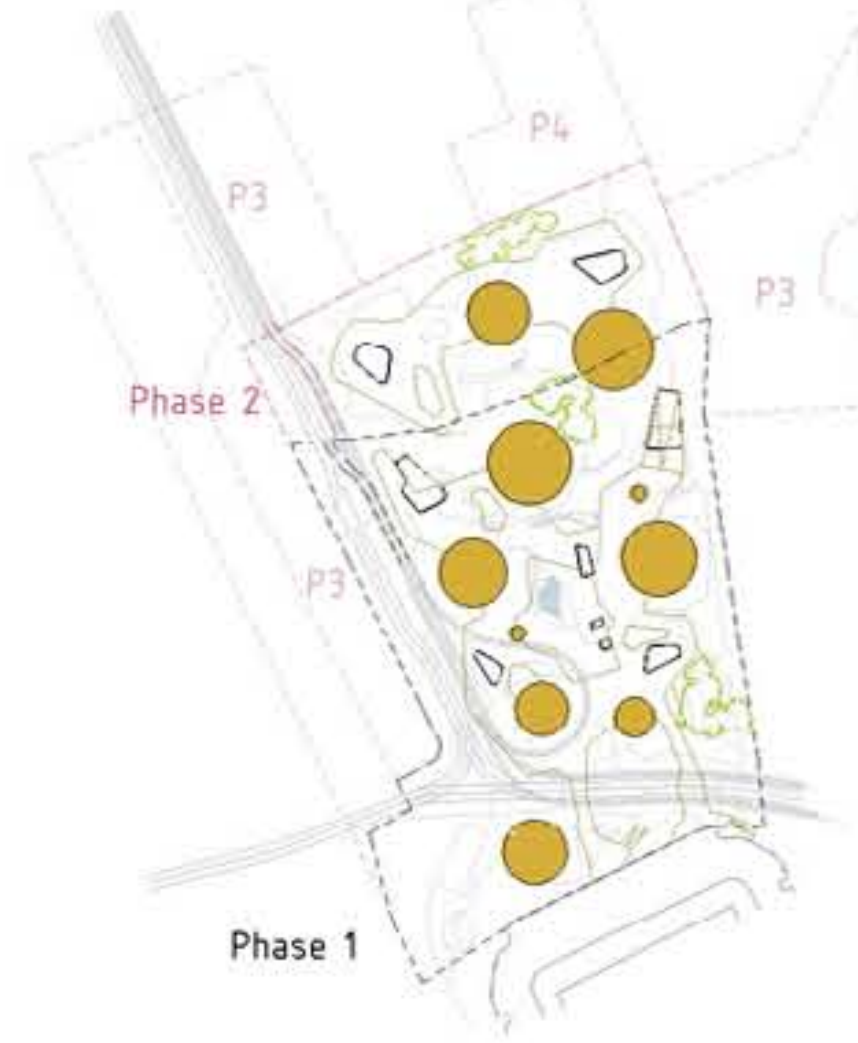
Totems dwellings. This circular high rise buildings have a wooden appearance. Keeping the identity of traditional wooden constructions.



Public Plaza. This space is a reinterpretation of the local town squares.

PHASES

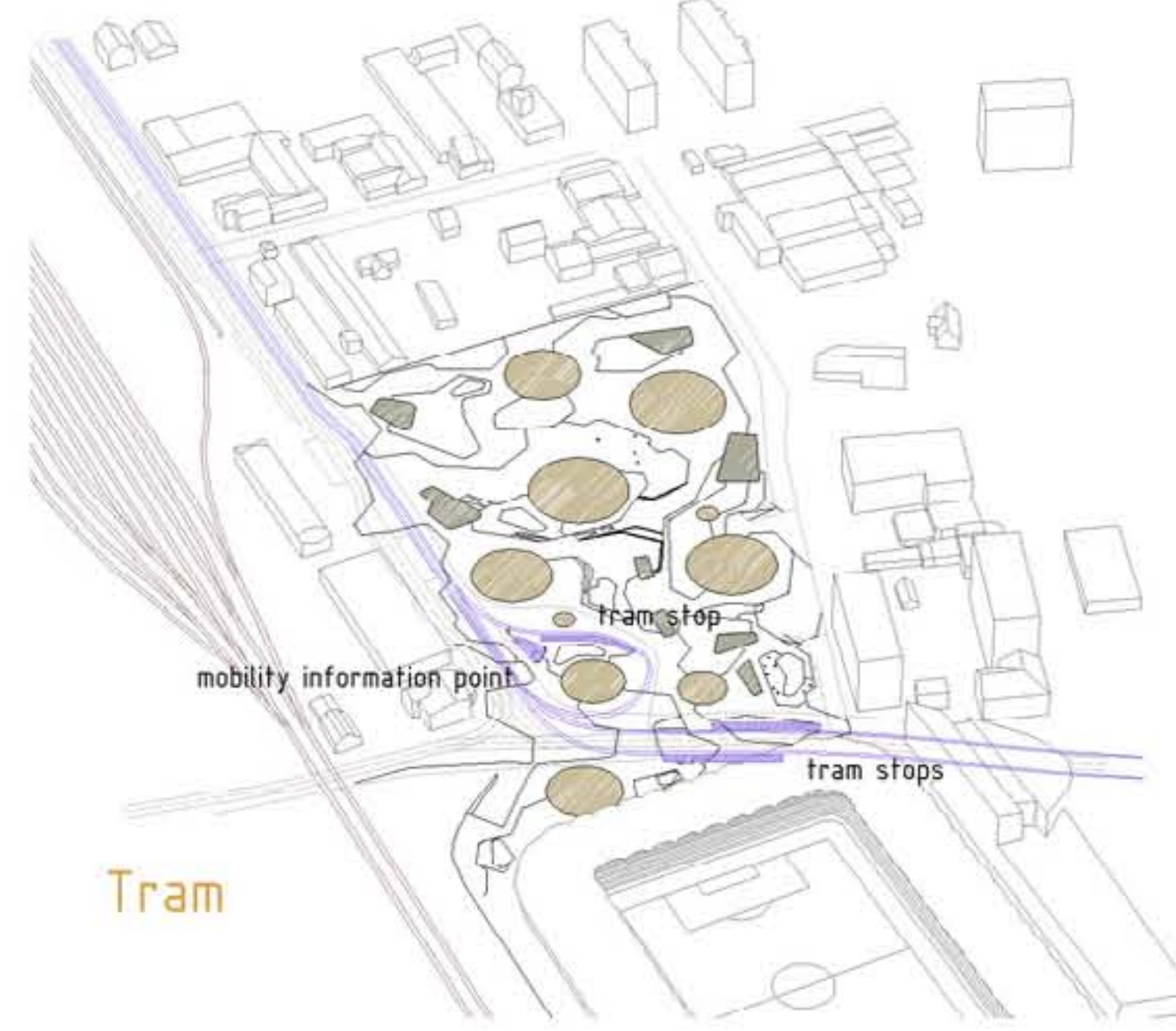
The urban development is planned as a flexible intervention that may be extended in time. Different phases are foreseen depending on the difficulty to reunite the plots existing now a days.



Phase one is the project site, while **phase two** includes the neighbor lot containing the supermarket, a big lot with only one owner. **Phase two** is also planned in the present project.

Phase three unites the two remaining industrial lots, **phase four** concerns the lots belonging to the private houses.

MOBILITY



Tram

Bike

Private motor traffic

Boulevard Conrad von Hötendorf

This road conceived for motor vehicles is humanized and converted in a green boulevard, reducing the lanes for vehicles and undulating its route in order to reduce the speed.



View of the project phase 1 + phase 2

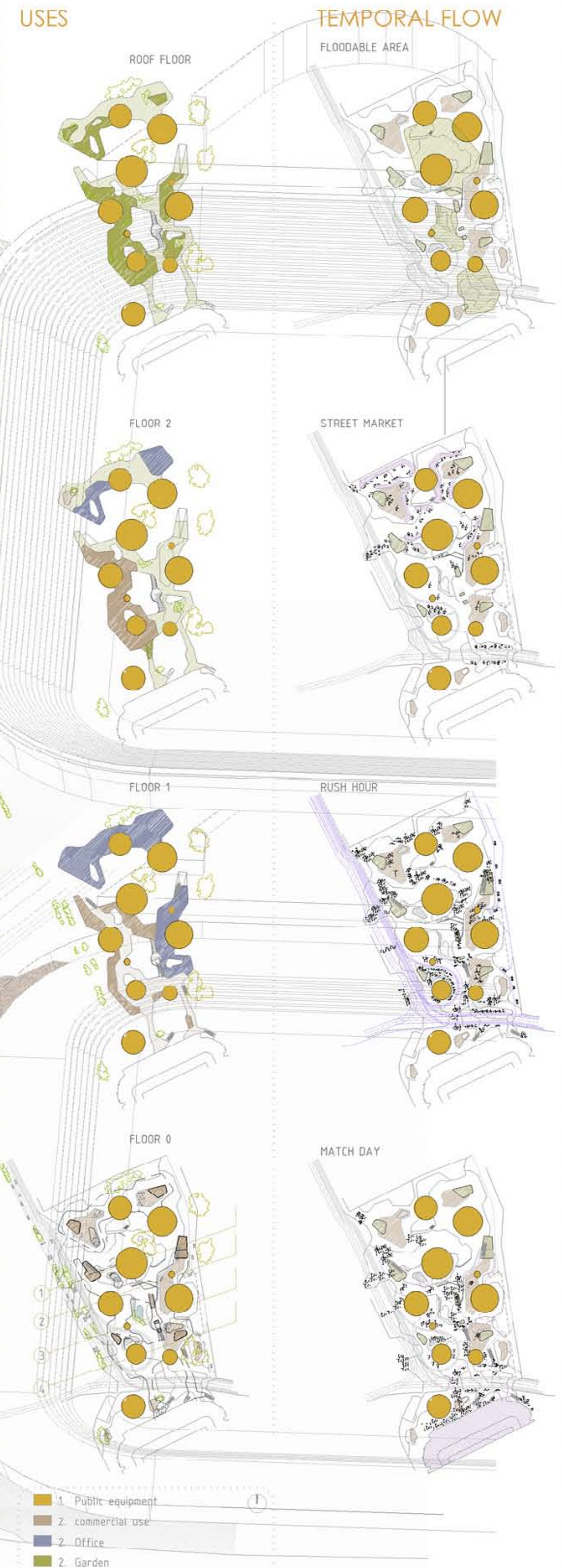
PHASE 2

PHASE 1

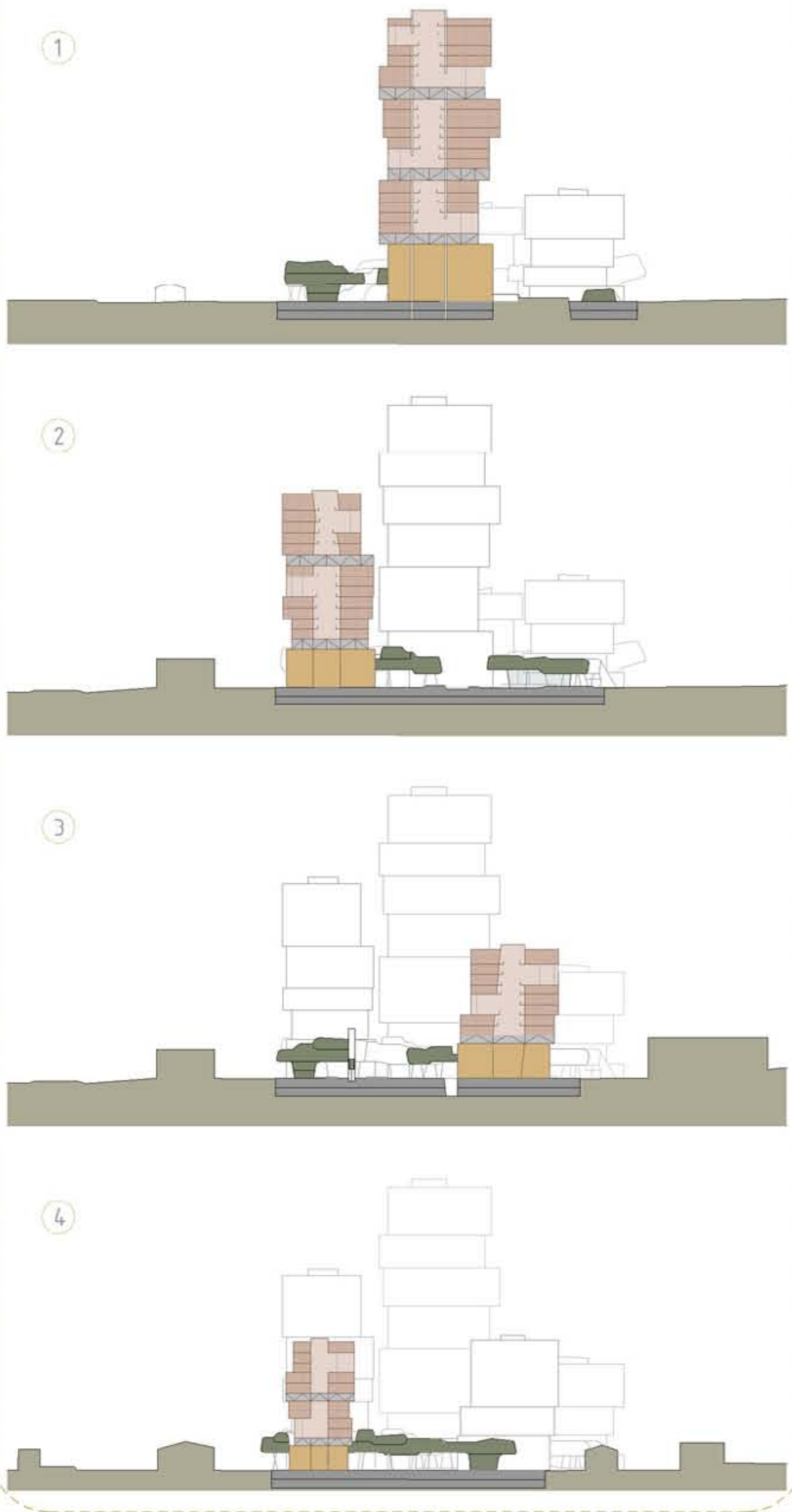
OVERLAPPING USES

The idea of overlapping layers works as well in a programmatic level. This concept results on a mixed use hybrid urban model. The circular buildings are located dispersly in the plot. They work as nodes, as focal attraction points, that increase the density of the city, providing the area with new flows. The ground floor of this nodes has a public equipment use (such as library, social centre, auditorium...) while the upper part of the buildings is filled with housing program. The equipped slab contains commercial and office uses.

OVERLAPPING LANDSCAPE 2
intermediate scale

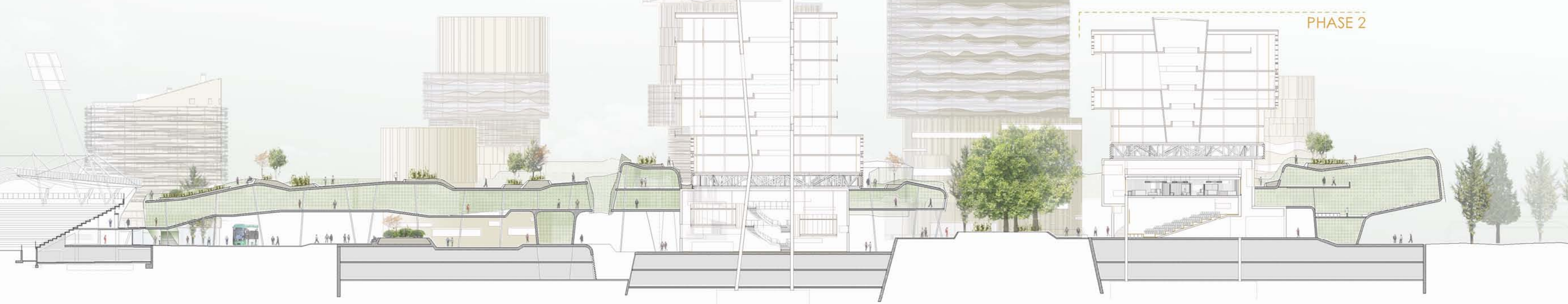


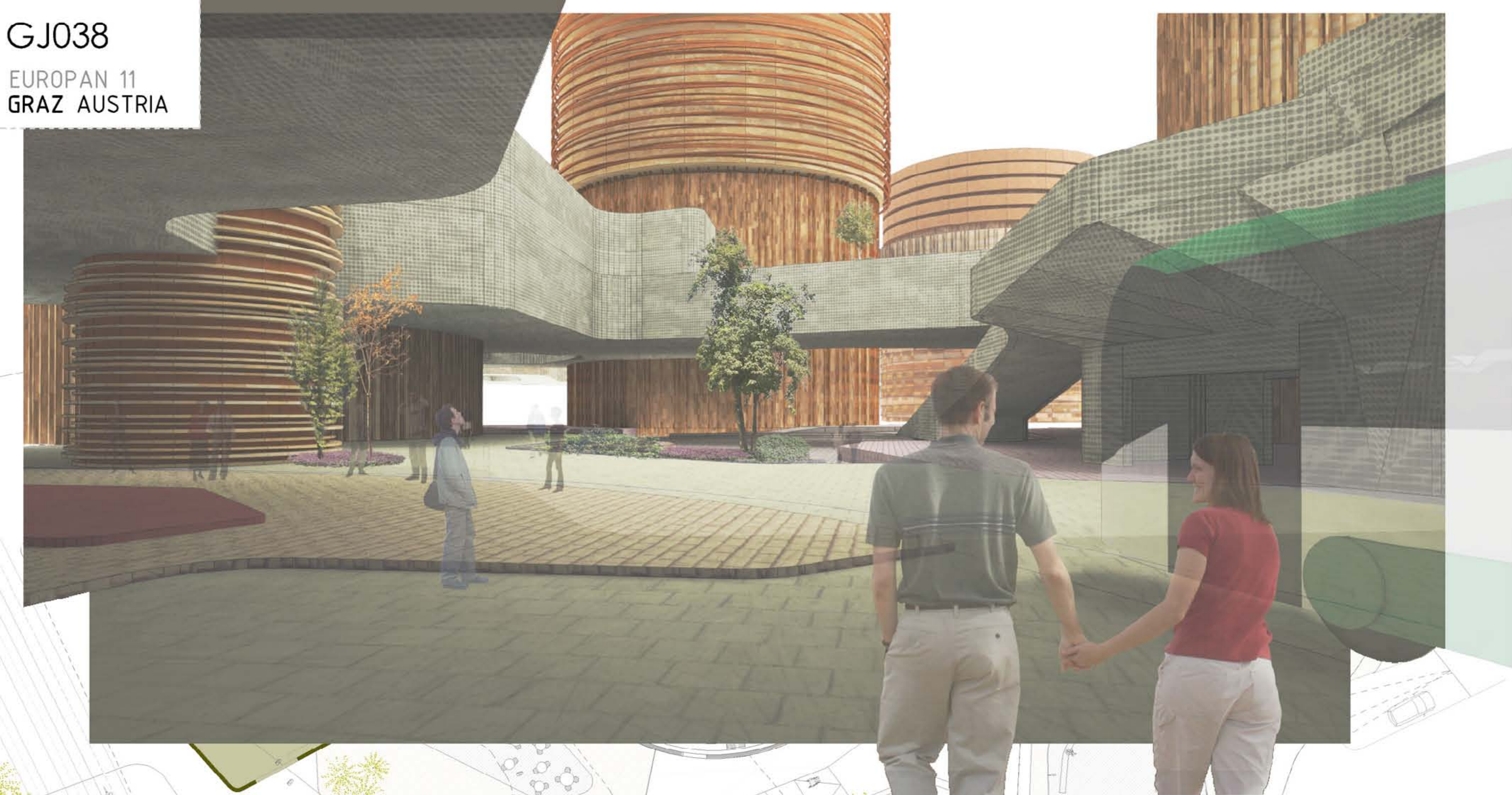
EAST-WEST SECTIONS (1:2000)



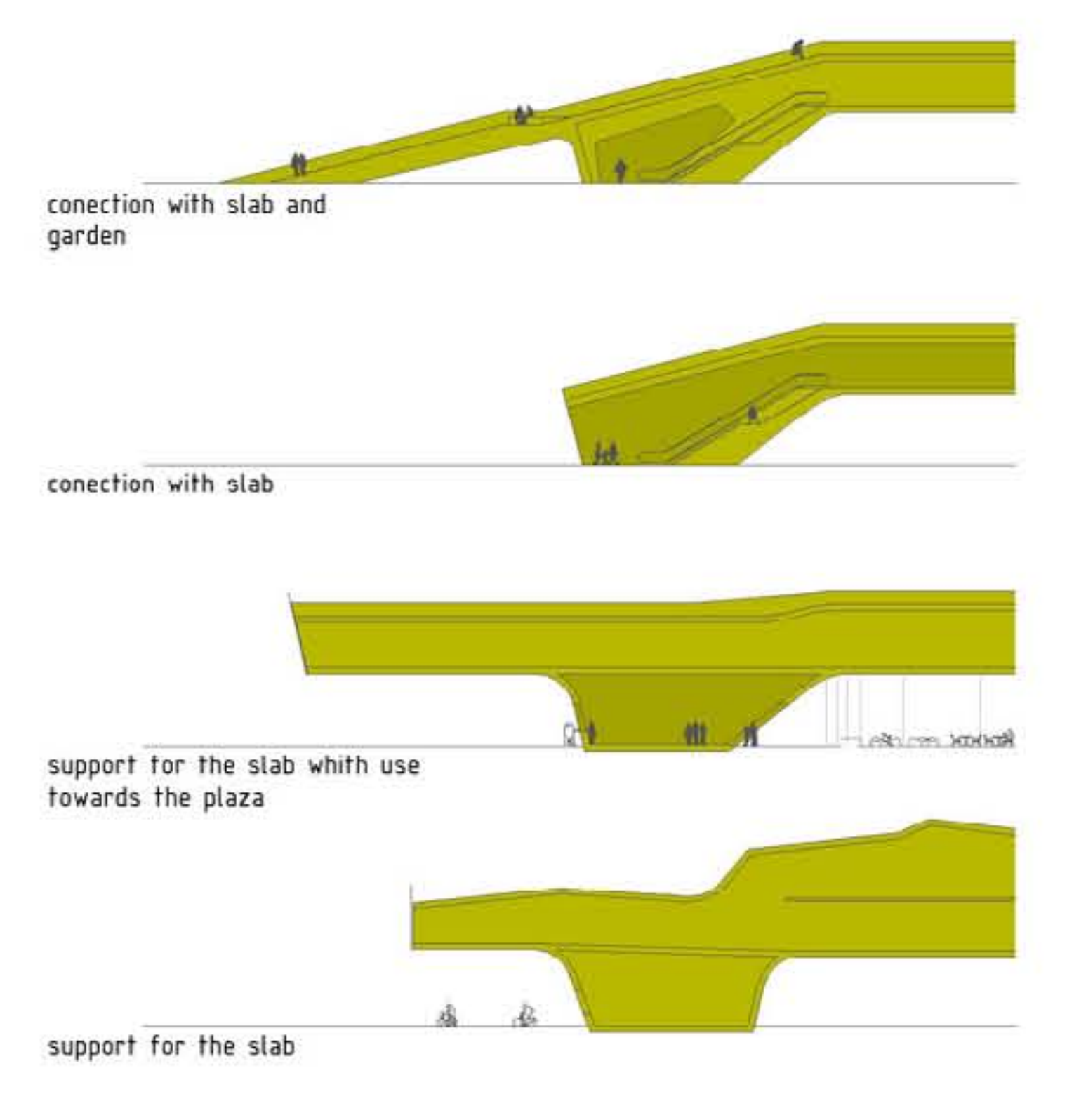
FLOODABLE AREAS (Square like spaces)
The organic movement of the slab qualifies and structures the public space providing the area with open, square like, spaces that have the flexibility to absorb different uses in different moments. We consider this places as floodable areas that will congregate the citizens in the most crowded moments (matches, markets...)

NORTH-SOUTH SECTION [1:500]

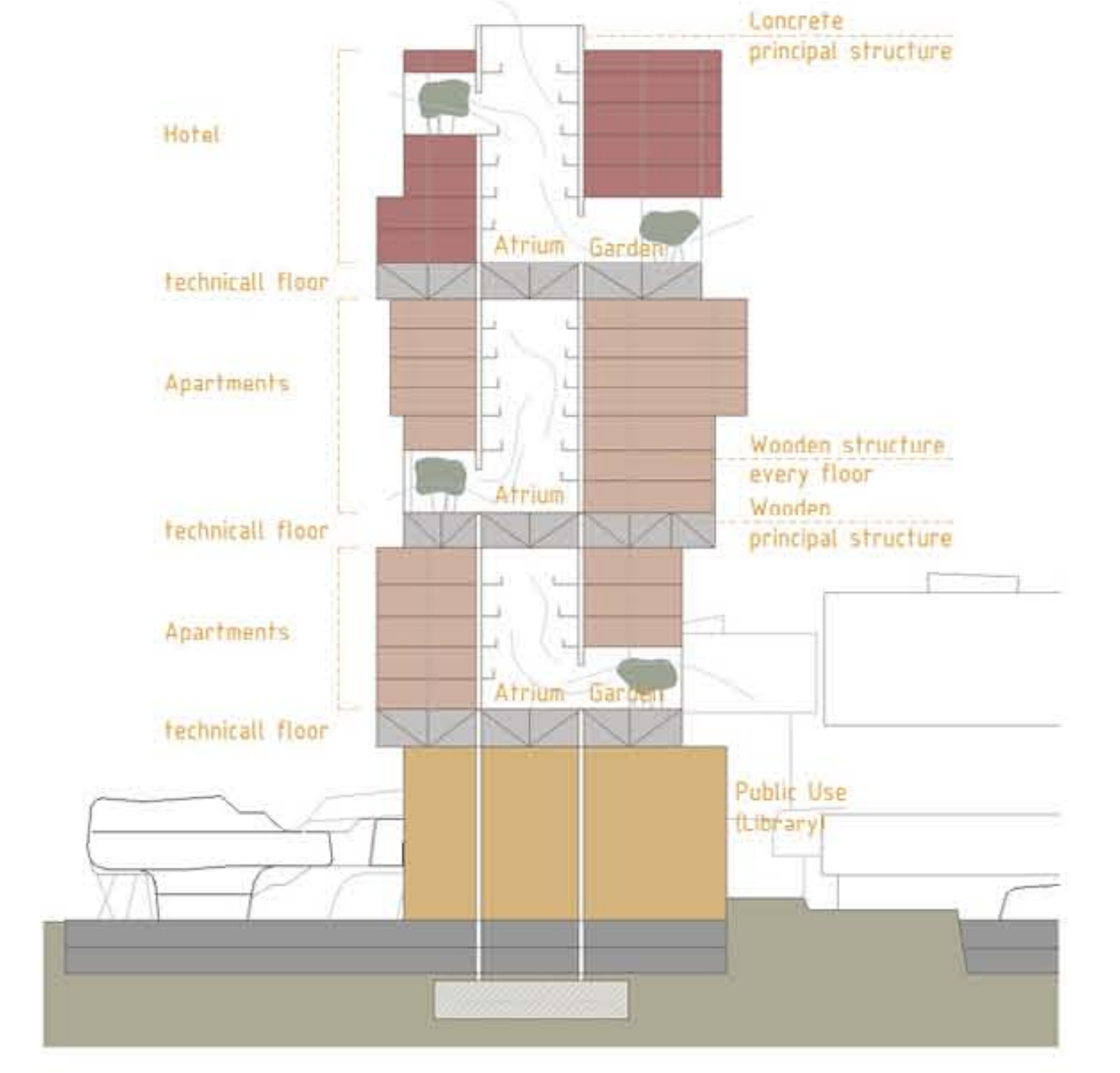




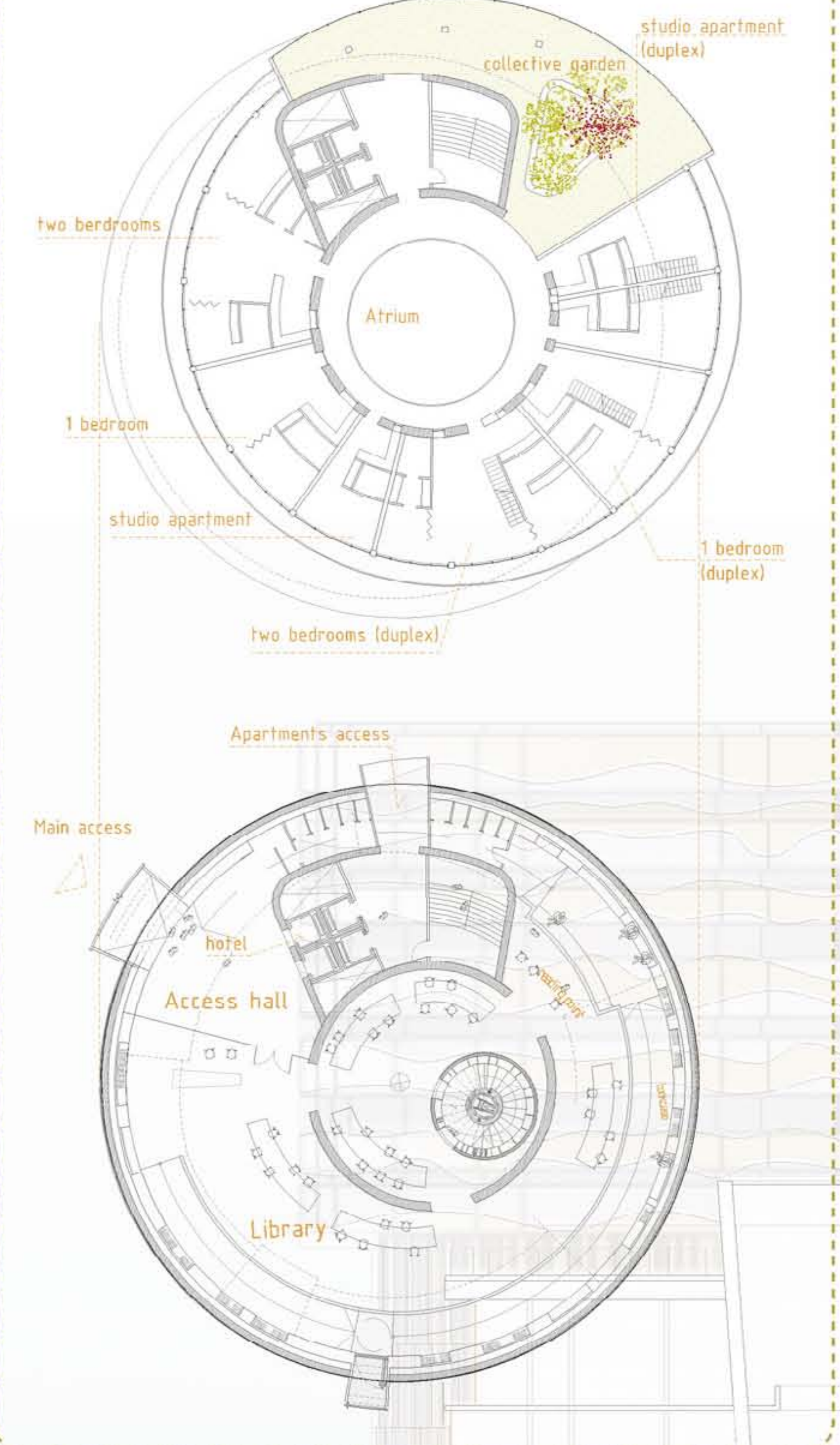
Slab development
A catalog of the encounters of the equipped slab with the ground floor is described underneath. The different contacts generate a range of possibilities for the urban space.



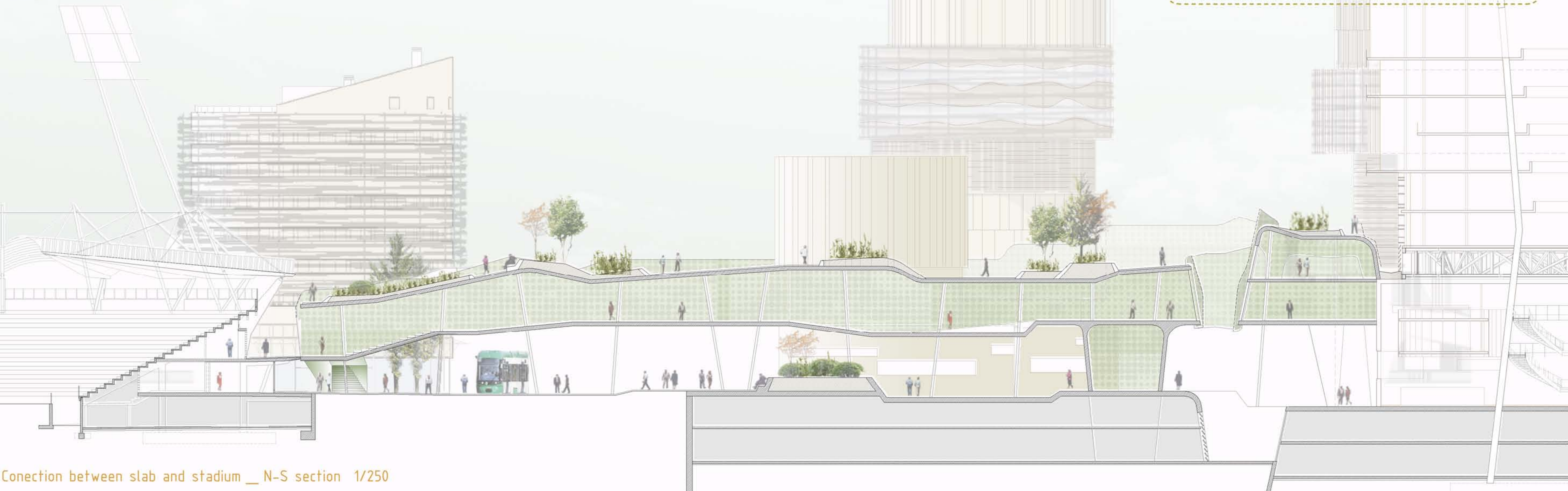
Totem housing development
The totem development concentrates public uses in the ground floor and housing program in the rest of the building. In the 100 meters tower planned the uses above 70 meters are assigned to hotel use.
The different sections in the tower may be occupied with different housing typologies.
The structure is planned as a principal concrete vertical structure that supports the main wooden beams. This main beams support the secondary wooden structure of each section of the highrise building.



The vertical buildings have a central atrium that connects with exterior through sky gardens. This provides the apartments with crossed ventilation. The ground floor of the totem buildings will have an access for the dwellings coexisting with a public use.



Ground floor 1/300



Connection between slab and stadium _ N-S section 1/250