



# european II: gray

## de - 113 : the wire

**the wire** explores the many non-motorized paths and trails folded into the spaces of our everyday life.

We propose the term **"wire"** to differentiate our landscape lines and their surroundings from the other motorized roads and streets.

**the wire** pathscapes comprise a broad diversity of **'spaces of going'**: footpaths; cycle-ways; transient 'desire lines' leading from one urban area to the other.

**the wire**, as space of movement, paths and trails are themselves 'in transit', always in process and under construction.

**the wire** proposes to consider paths, cycle-ways and back-roads in their multiple and dynamic aspects.

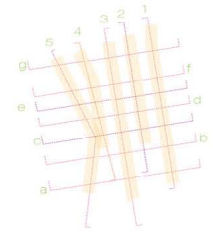
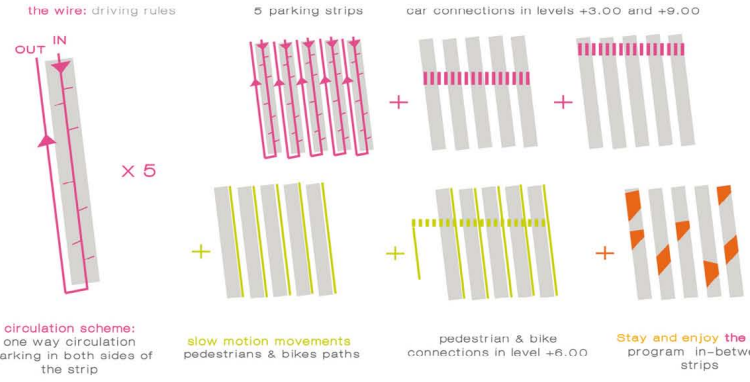
Further than a physical trace, a trail is tantamount to a movement, an act of crossing.

As a location for encounter and exchange, **the wire** occurs as a nexus of symbols and meanings, memories and stories, a site where events unroll and subjectivities emerge.

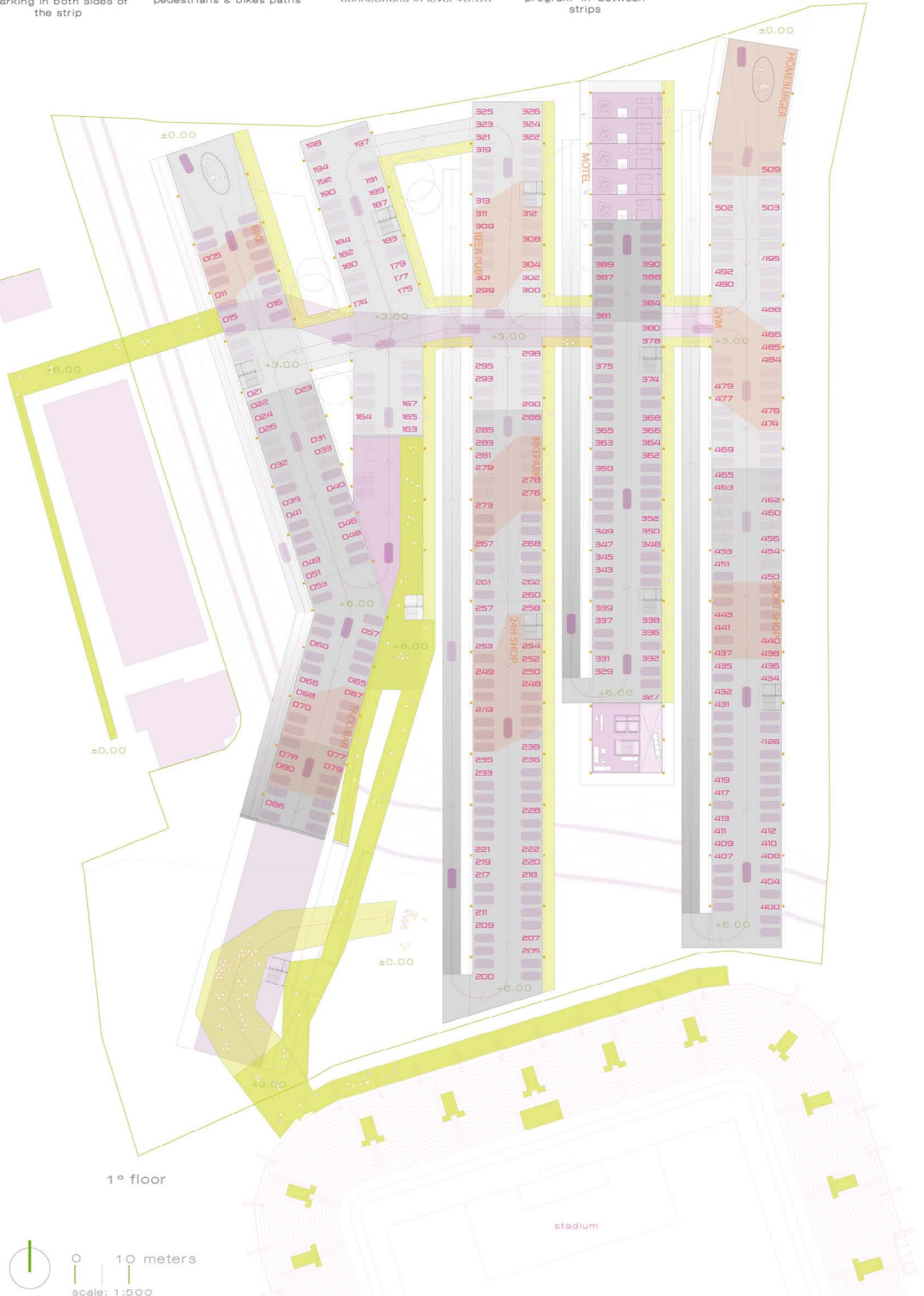
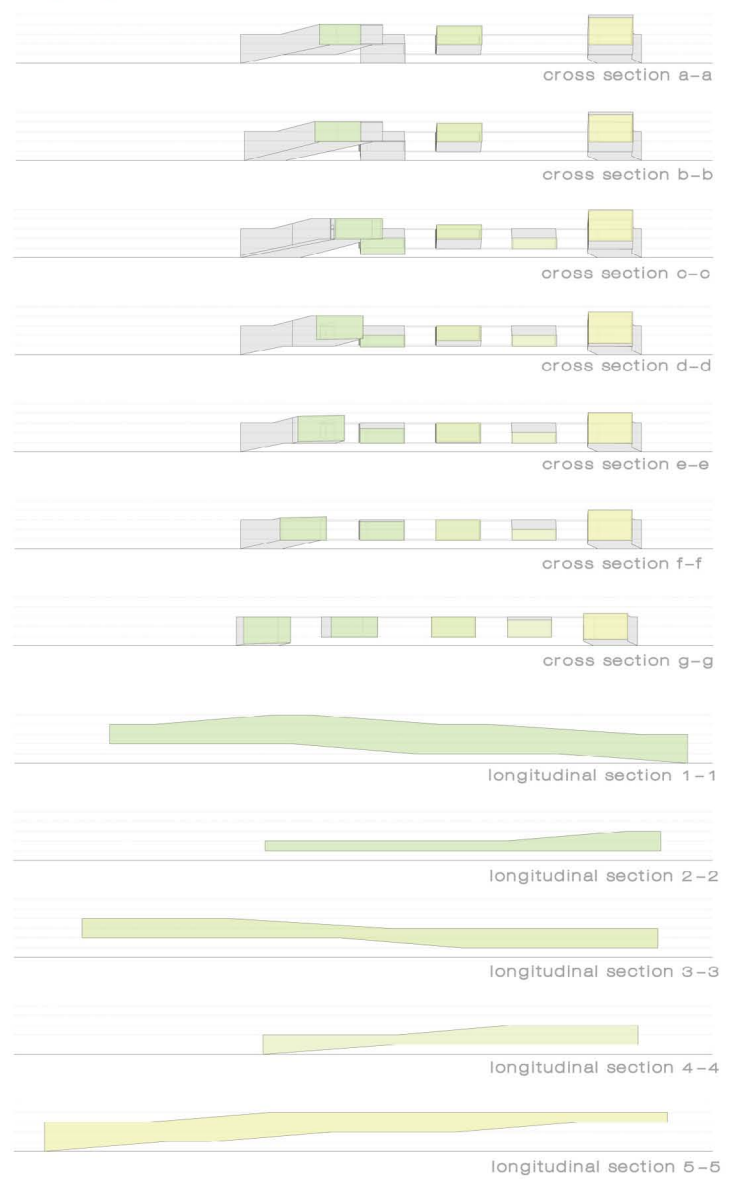
We have considered maintaining the character of the site as: a contemporary market, a place for traffic exchange; a destination for changing mobility, from regional to local networks.

**the wire** will improve this meaning, focusing further than just traffic exchange in relations and connections.

The proposal, as a flexible urban and topographical infrastructure, provides spaces and diverse program for the people and their different rhythms and speeds.



site plan / ground floor  
0 10 50 100 meters  
scale: 1:1000



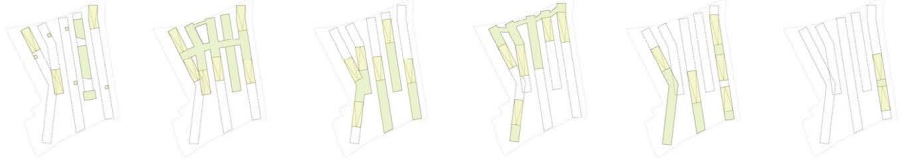
0 10 meters  
scale: 1:500



# europam II: gray

## de - 113 : the wire

ground floor level +3.00 m level +6.00 m level +9.00 m level +12.00 m level +15.00 m

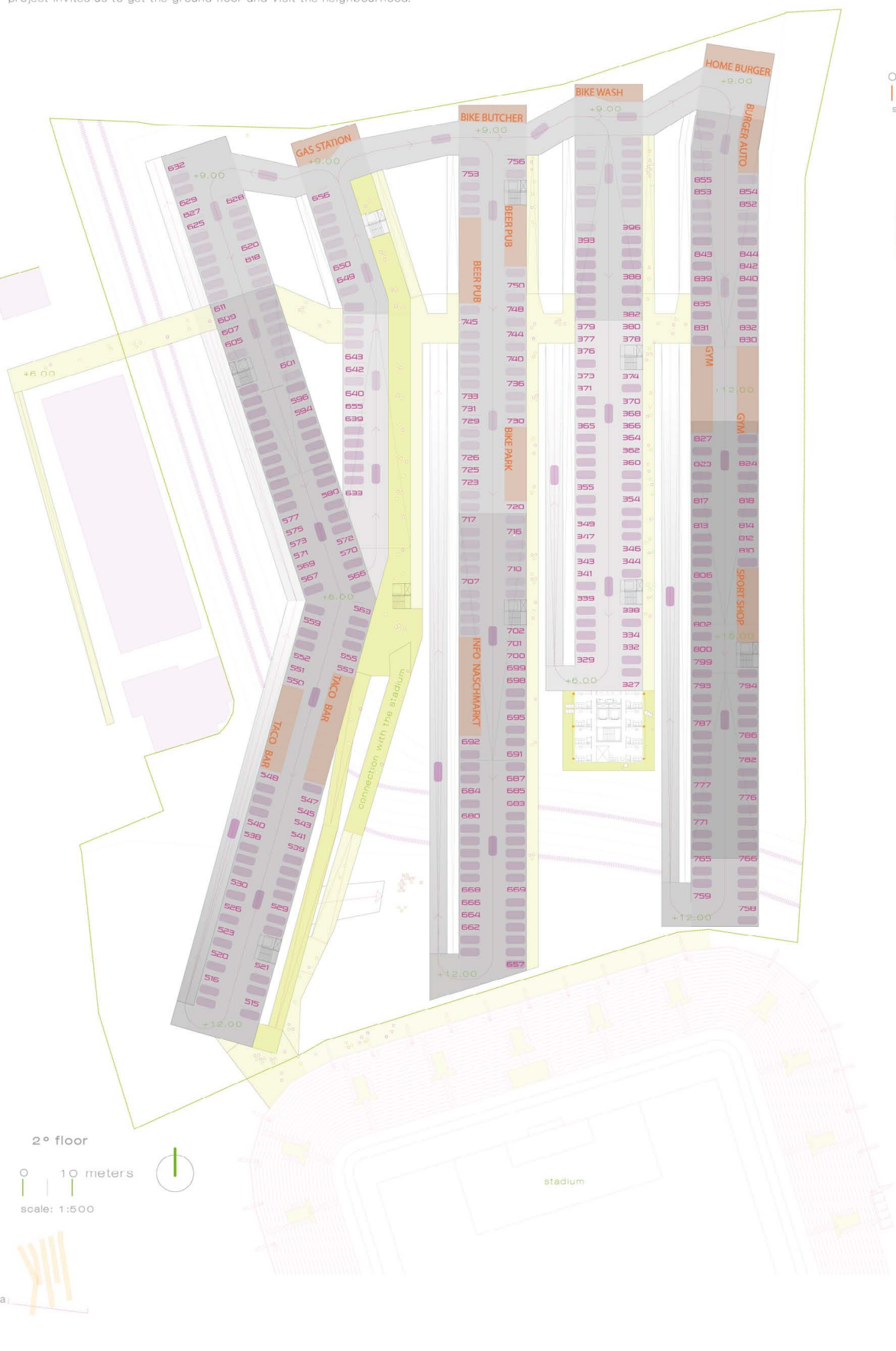
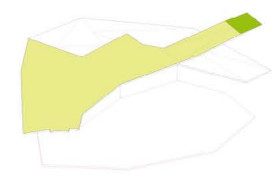


**the wire** will be a place for exchanging transports and a public meeting space.  
**the wire** contains a diverse and wide number of activities linking with both topics: new urbanism on the way and flexible rental spaces.  
 Five strips with a double surface for parking and a variable program will free the ground floor space: just for the coexistence of speeds: car, bus, tram, pedestrians and bikes.  
 During the stadium occupancy, the 100% of the ground surface will be full of cars, but the rest of the time, the top surface of **the wire**, will provide spaces for a wide range of activities: The Naschmarkt, sports, skaters competitions, art exhibitions, open cinema, restaurants, terrace...  
**the wire** will provide facilities that will increase the life of the building.  
 People from the surroundings can use **the wire** as a meeting point, located half distance between the city center and the neighbourhood.  
 The tower is located near the stadium and the traffic entrance. On behalf of sustainability, we placed the tower considering its shadow: it runs over public program and leaves the housing surface with the 100% of sunlight.  
 Cars can cross through **the wire** and reduced their speed before entering the main boulevard. They can also get into the building and change to a softer transport.  
**the wire** connects the stadium with the new urban space: crossing over Ulrich Strasse by a suspended bridge.  
 The new tram station is on the plaza, in front of the tower entry. The extension of the project over the city provides new volumes for new ways of life and work, strongly linked to movement and transport.  
 The whole proposal is a strong catalyzer for the exchange of pedestrian traffic: from the closer and further areas, and the topographical concept of the project invites us to get the ground floor and visit the neighbourhood.



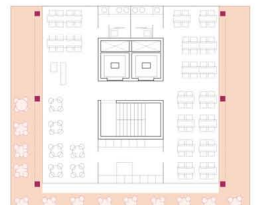
Cafeteria: ground floor

0 5 10 20 meters  
 scale: 1:250



2° floor  
 0 10 meters  
 scale: 1:500

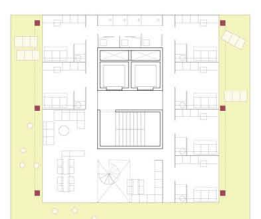
housing prototypes



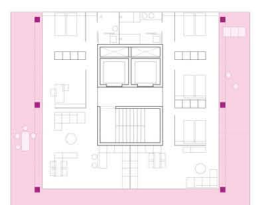
panoramic restaurant



students housing (1° floor)



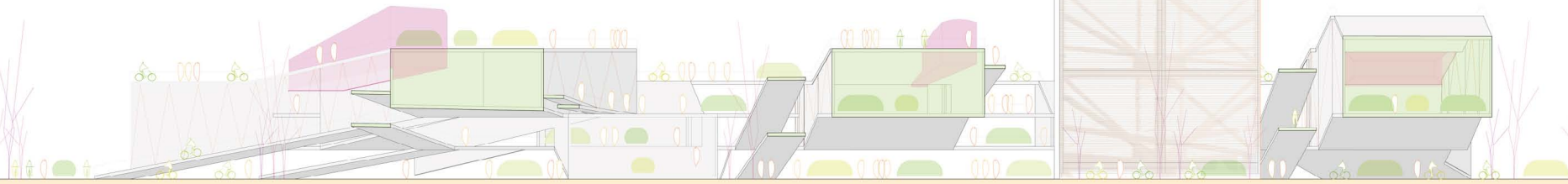
students housing (2° floor)



studio (2 pax) and flat (6 pax)



loft (2 pax) and flat (4 pax)



0 5 10 20 meters  
 scale: 1:250

Section a-a